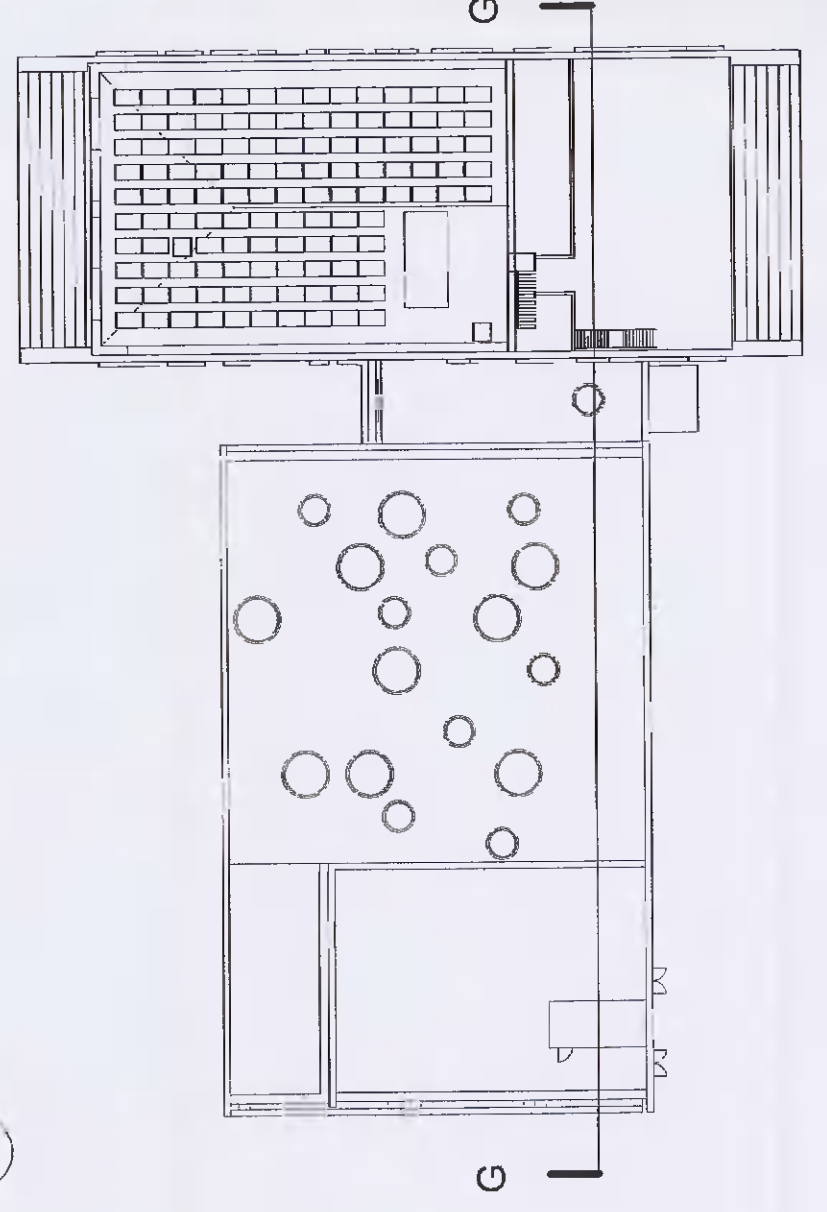


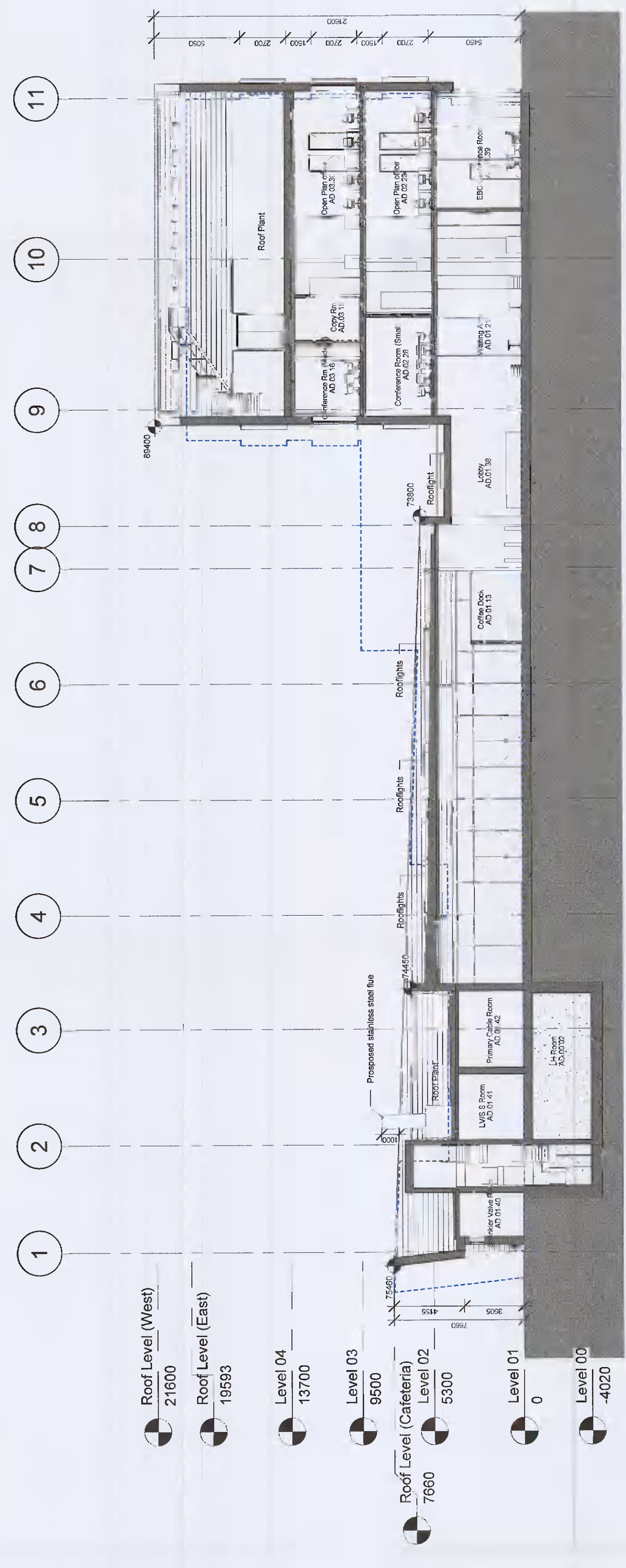
| | |
|-------------------------------|---------------|
| Approvals: | |
| Customer | Microsoft |
| Project Manager | John Lee |
| Microsoft Technical Engineer | Chris O'Brien |
| Microsoft Electrical Engineer | Alan Kelly |
| Electrical Manager | David Jones |
| Security Manager | John Schumann |
| CSA | John Schumann |

- General Notes:**
- This is not an installation drawing and shows design intent information only. It is not a construction drawing. It is intended to be used in conjunction with other drawings. All levels are in meters (m) unless noted otherwise.
 - The drawing shall be read in conjunction with building services documents and other relevant information.
 - Equipment and plant details are not manufacturer specific. The Contractor shall be responsible for the selection of equipment and long lead equipment will be coordinated by the GC based on final specifications.
 - All service penetrations through the rated compartment walls are to be detailed to achieve a minimum fire resistance of 120 minutes. Details are designed to accommodate thermal movement. Details shall be coordinated with the structural engineer's contract.
 - The Contractor will produce fully coordinated installation drawings prior to installation for approval.
 - The Contractor will produce as built drawings prior to handover for approval.

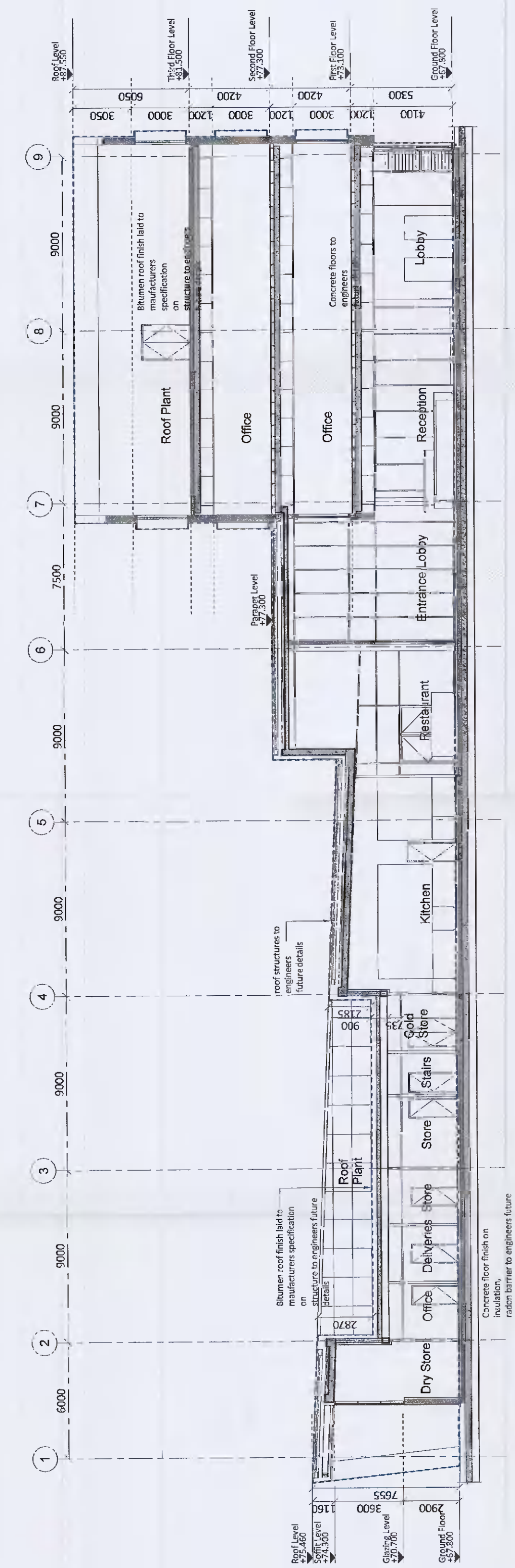
Denotes outline of approved (S20AM0283) Buildings footprints



2 Key Plan
1:500



1 Section A Proposed
1:200



3 Section 3 Approved
1:200

P01 | 25/06/21 | Issued for Planning

| | | |
|-------|----------|----------------------|
| Issue | Date | Revision Description |
| 1 | 25/06/21 | Issued for Planning |

ARUP **Microsoft**

DONNELLY TURPIN ARCHITECTS
 100-10000 100th Ave NE, Suite 1000, Redmond, WA 98073
 Tel: +1 206 881 4000 Fax: +1 206 881 4001
 www.donnelyturpin.com

Client: _____

Project No: _____
 Proposed Modifications to Previously Approved Scheme S20AM0283

| | |
|---|--|
| Drawings Title | |
| Sections Office Building (Approved & Proposed Comparison) | |
| Scale as is | As indicated |
| Rev | As indicated |
| Discipline | Architecture |
| Sheet | S2 - Suitable for information - Planning |
| Job No | 2035 |
| Rev | P01 |
| Disc | A1200 |