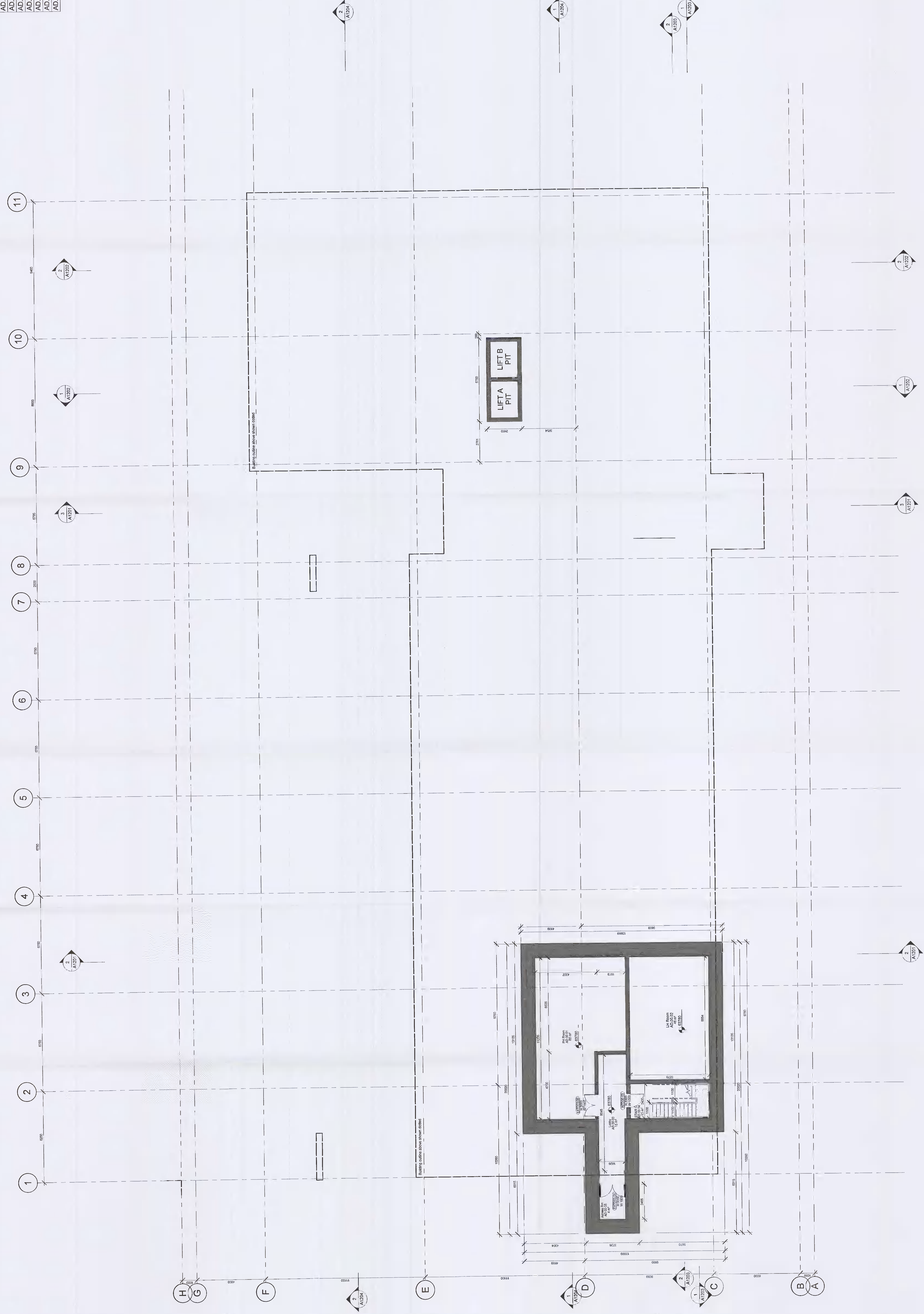


General Notes:
 1. This is not an installation drawing and shows only the intended location of equipment. All dimensions are in millimetres (mm) unless noted otherwise. All levels are in metres (m) unless noted otherwise.
 2. Do not scale work to fixed dimensions only.
 3. This drawing shall be read in conjunction with the relevant specifications and other relevant contract documents.
 4. Specific Contractor selected equipment shall meet the given constraints and long lead equipment will be ordered in advance of construction.
 5. All service penetrations through fire rated walls and floors shall be protected with a rating equivalent to the compartment and shall be installed to accommodate the movements as detailed in the relevant specifications and other contract documents.
 6. All services crossing the movement joints shall be installed to accommodate the movements as detailed in the relevant specifications and other contract documents.
 7. The Contractor will produce fully coordinated drawings for the equipment prior to installation for approval.
 8. The Contractor will coordinate with the relevant authorities as built drawings prior to recovery for approval.

Number	Name	Space Function	Area
AD.00.01	PH Room		60 m ²
AD.00.02	LH Room		48 m ²
AD.00.03	Lobby		15 m ²
AD.00.04	STAIR C		13 m ²
AD.00.05	Access Rm		4 m ²
AD.00.06	STAIR B		26 m ²
AD.00.07	STAIR A		10 m ²
AD.00.08	Storage		8 m ²
AD.00.09	STAIR C		15 m ²
AD.00.10	Riser		1 m ²
AD.00.11	STAIR A		20 m ²
AD.00.12	Riser		3 m ²
AD.00.13	STAIRS A		20 m ²



1 GA Level 00
1 : 100