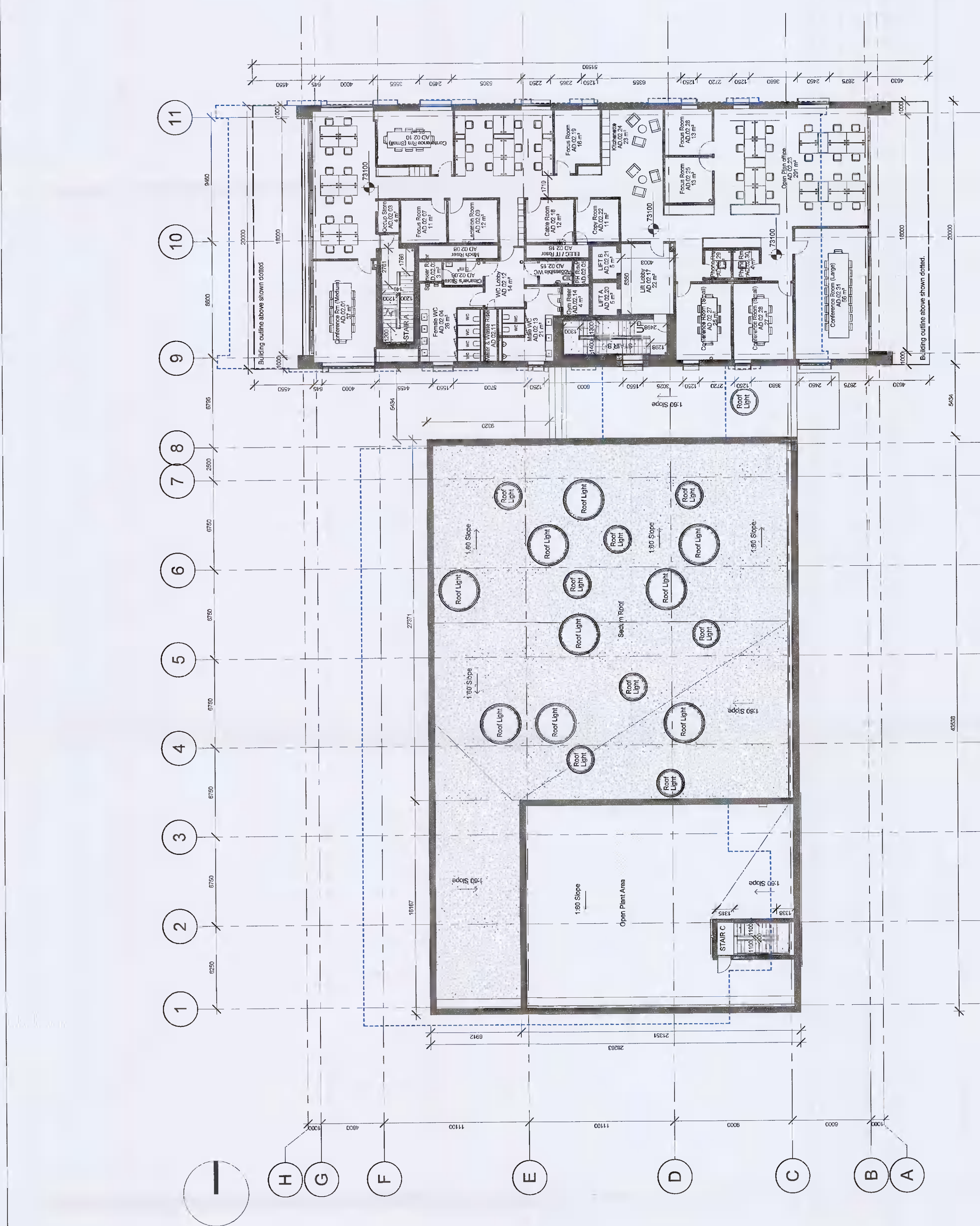
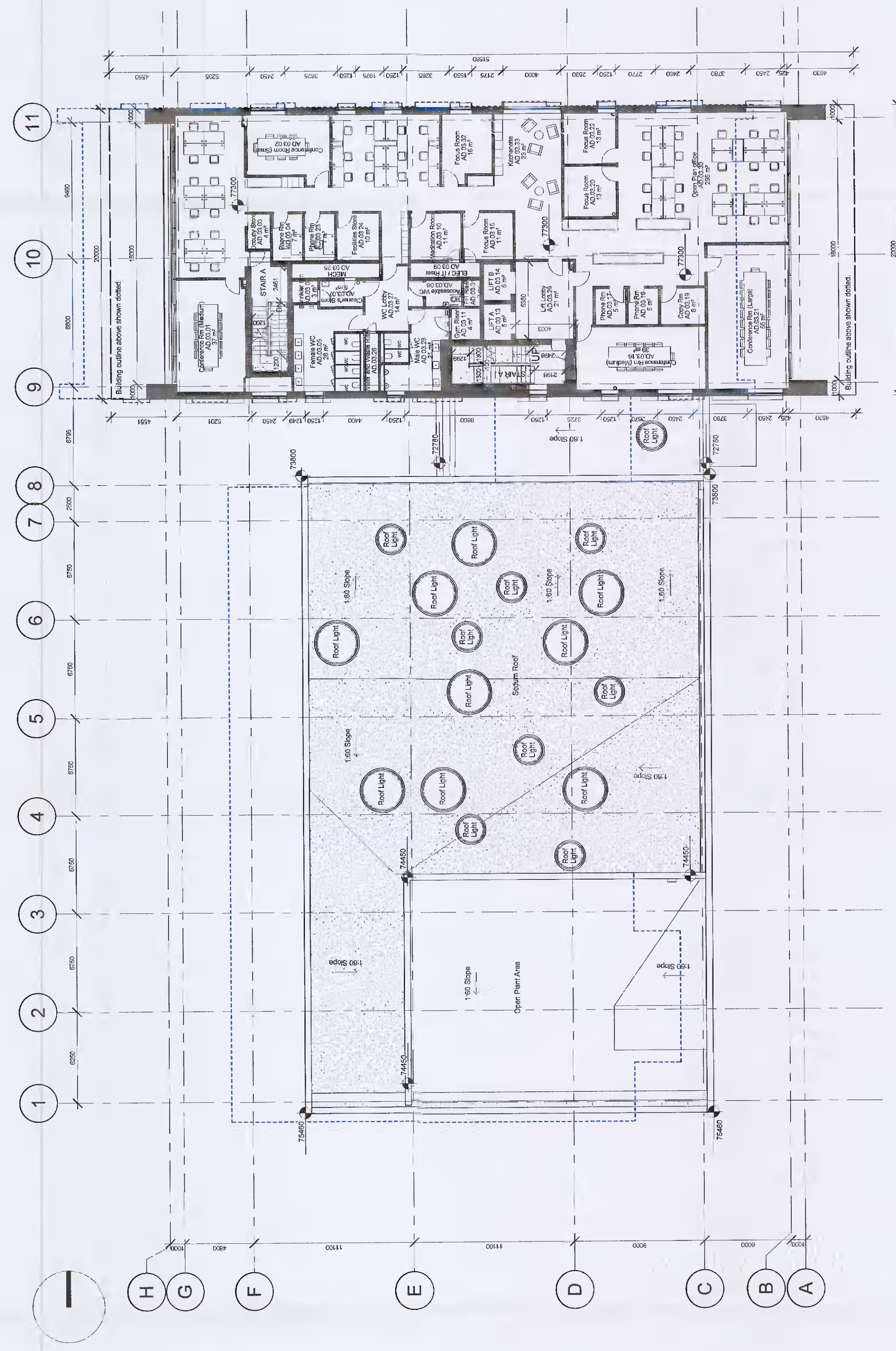


- General Notes:**
- This is not an installation drawing and shows proposed equipment locations only.
  - All dimensions are in millimetres (mm) unless noted otherwise. All levels are in metres (m) unless noted otherwise.
  - Do not make work to figured dimensions only. This drawing shall be read in conjunction with the approved specifications and shall not be used for construction purposes without the approval of the contractor.
  - Contractor shall provide equipment that meets the given constraints and any load equipment will be provided by the contractor.
  - All services shall be provided through the main distribution board (MDB) and shall be coordinated with the contractor's electrical engineer.
  - All services crossing the movement loads shall be installed to accommodate the movements as detailed in the approved specifications.
  - The Contractor shall produce fully coordinated and coordinated drawings for the equipment to be installed.
  - Contractor shall provide as-built drawings prior to handover for approval.

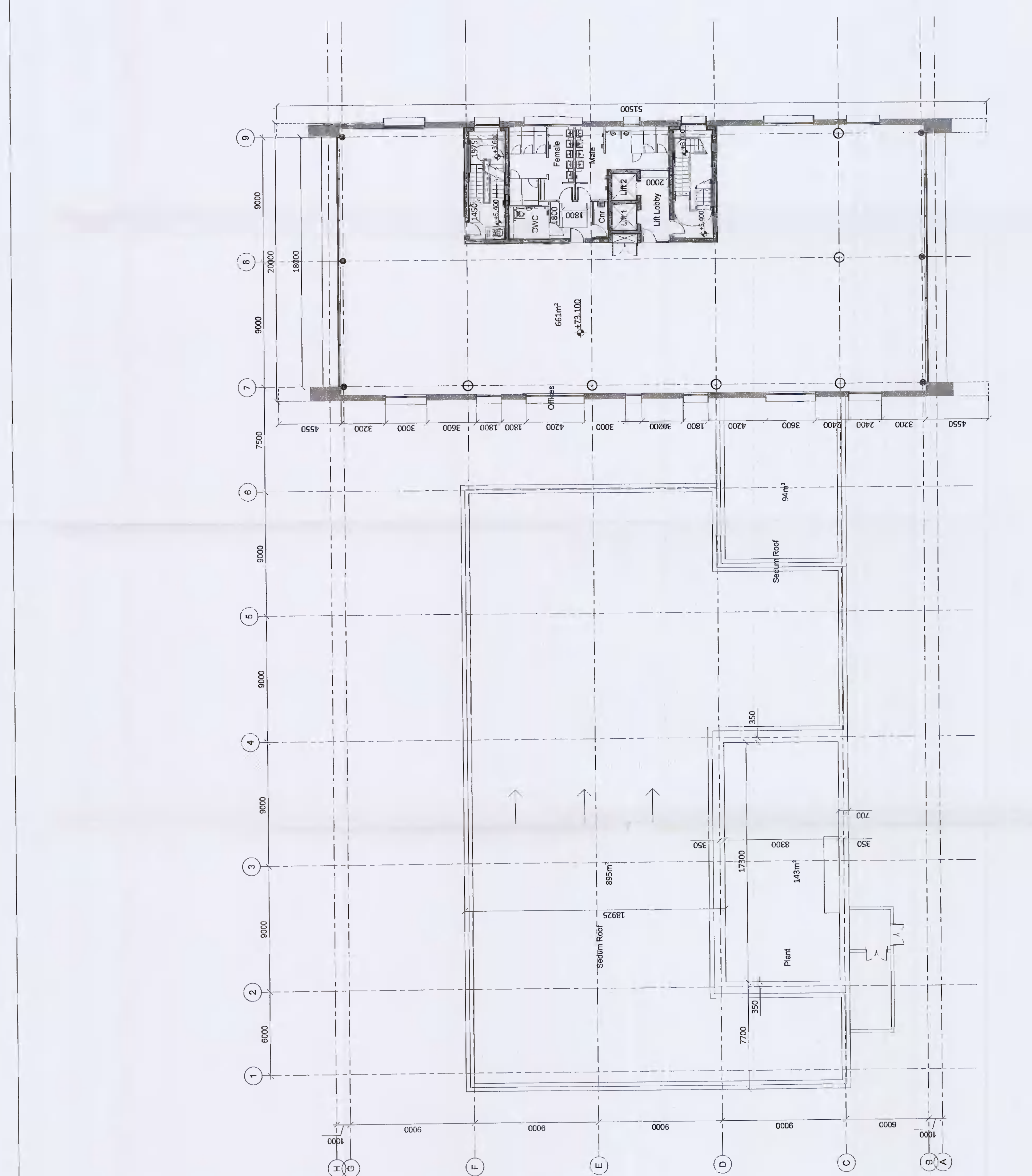
Design outline of approved (2024/02/28) building footprint



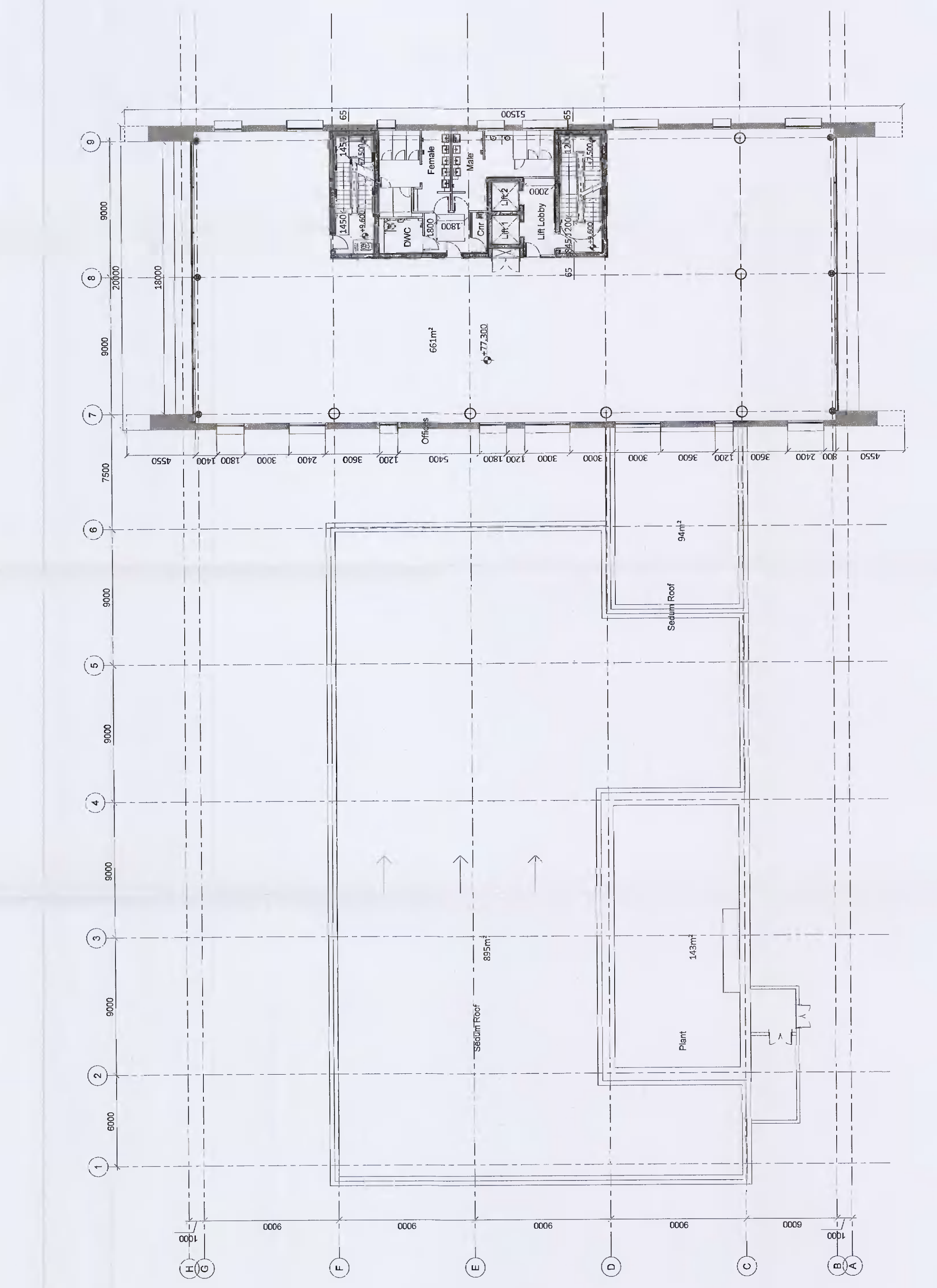
1 First Floor Plan Proposed  
1 : 200



2 Second Floor Plan Proposed  
1 : 200



3 First Floor Plan Approved  
1 : 200



4 Second Floor Plan Approved  
1 : 200