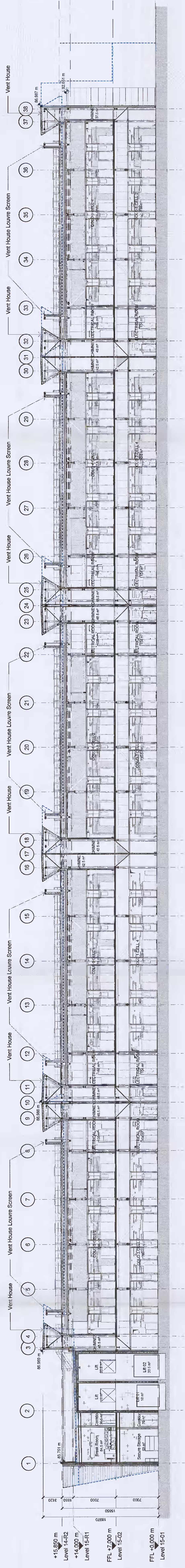


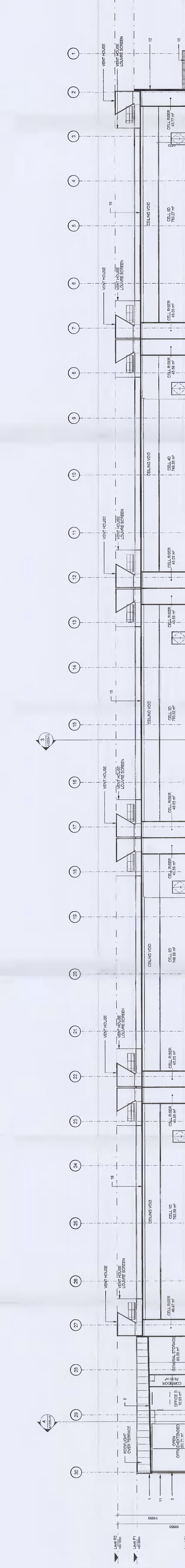
Approvals:
 Customer: Microsoft, Date: 11/20/2021
 Microsoft Technical Engineer: Craig Lutz
 Microsoft Technical Engineer: Cheryl Colburn
 Microsoft Technical Engineer: John Lohr
 Microsoft Technical Engineer: L. Scott Gossard
 Microsoft Technical Engineer: Michael D'Amico

General Notes:
 1. This is not an installation drawing and shows design intent information only. (mm unless noted otherwise, all levels are in meters (m) unless noted otherwise.)
 2. Do not scale work to found dimensions only. This drawing shall be read in conjunction with the contract documents and other relevant documents.
 3. Equipment and panel details are not manufacturer specific. Equipment shall be selected based on the given constraints and long lead equipment will be noted.
 4. All service penetrations through fire rated walls shall be protected with fire rated equipment to accommodate internal movement and shall be installed in accordance with the contract documents.
 5. The Contractor will produce fully coordinated approved drawings prior to installation for the Contractor to produce as built drawings prior to installation of equipment.
 6. The Contractor will produce as built drawings prior to installation of equipment.

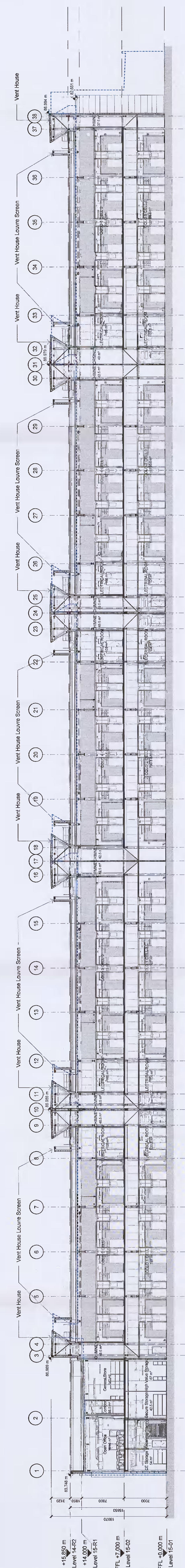
1- Section - As Approved - Section A-A
 Scale: 1:250



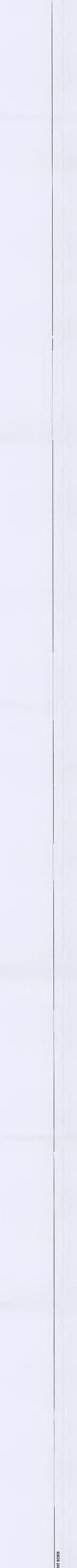
2- Section - Proposed - Section A-A
 Scale: 1:250



3- Section - As Approved - Section B-B
 Scale: 1:250



4- Section - Proposed - Section B-B
 Scale: 1:250



Key: Outline of planning approved

Model: P01, Date: 25.06.21, Issue: for Planning, Revision: Information

ARUP

Microsoft

Approved Modifications to Previously Approved Scheme SD20A0283

Sheet No.	1	2	3	4	5	6	7	8	9	10	11	12	13	14	15
Sheet Title	1	2	3	4	5	6	7	8	9	10	11	12	13	14	15

Approved and Proposed Sections
 DUB 15 Data Centre

Scale: As Indicated
 Role: Architectural
 Status: CS - Suitable for Information - Planning
 Drawing No: 279225
 Project No: A1200 - 15