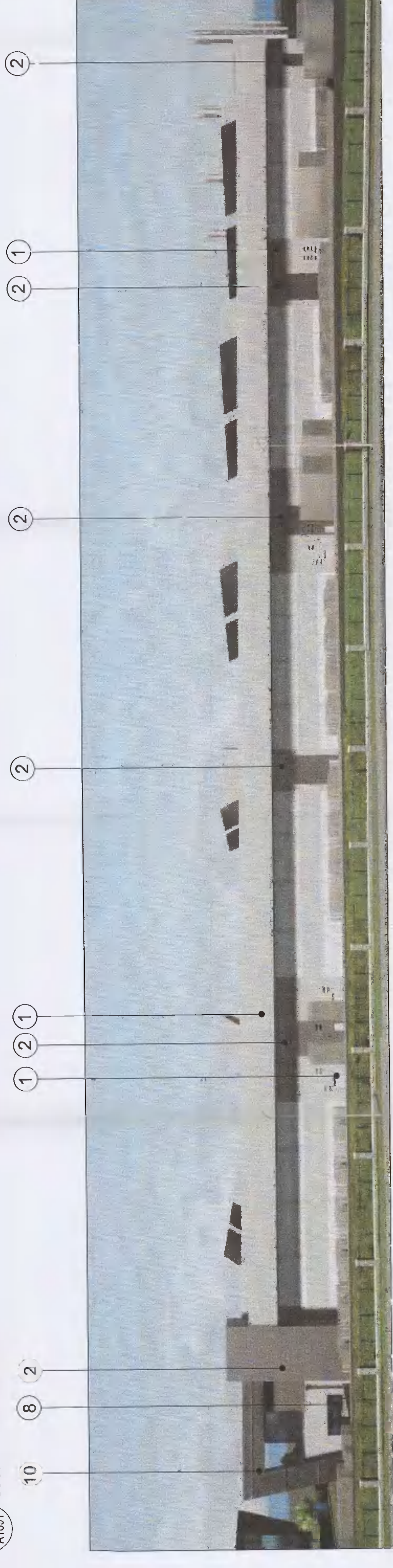
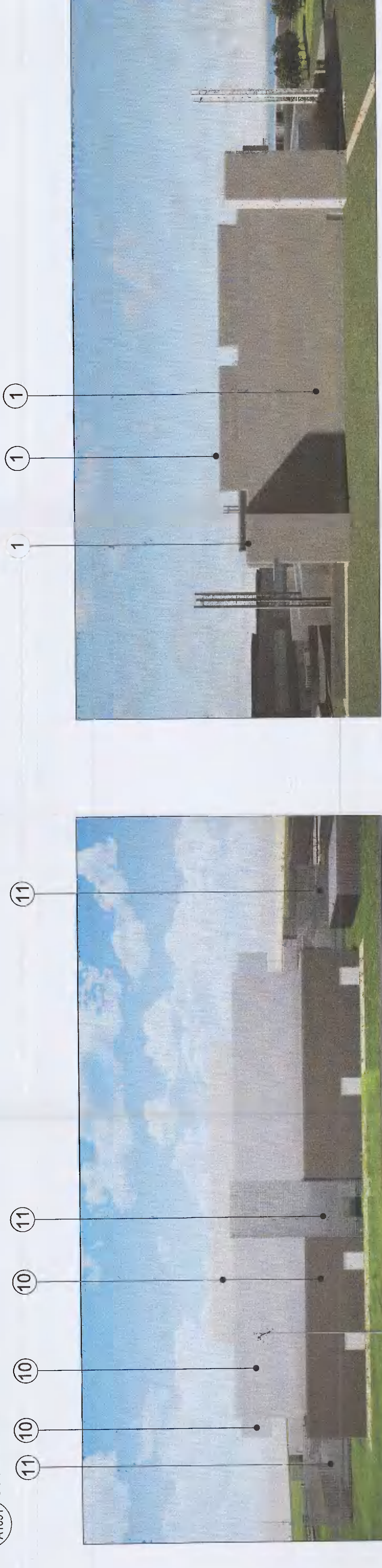


01 EXTERIOR FINISHES
 A1091 / DC SOUTH ELEVATION - AS APPROVED



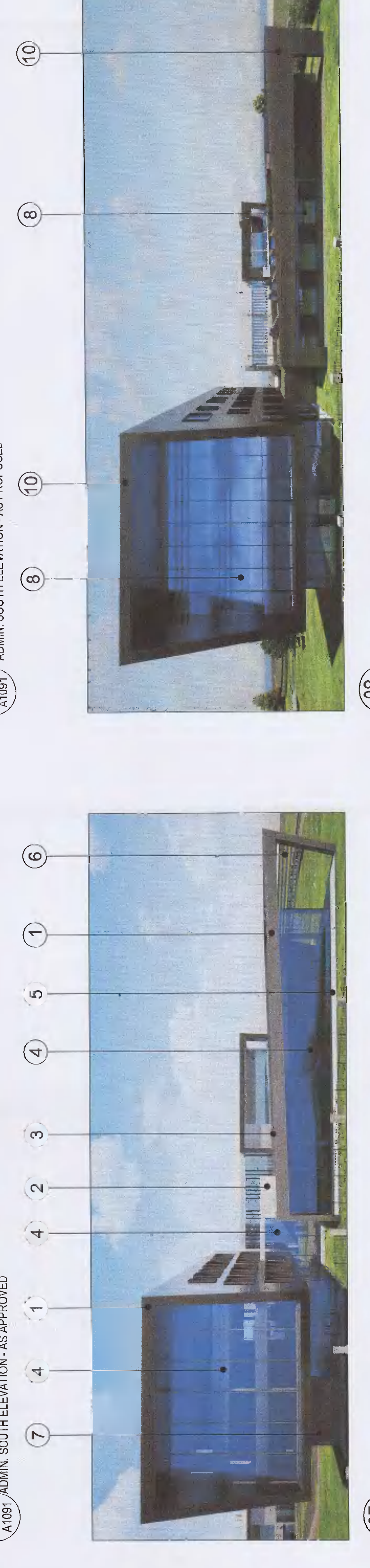
02 EXTERIOR FINISHES
 A1091 / DC SOUTH ELEVATION - AS PROPOSED



03 EXTERIOR FINISHES
 A1091 / DC EAST ELEVATION - AS APPROVED



04 EXTERIOR FINISHES
 A1091 / DC EAST ELEVATION - AS PROPOSED



05 EXTERIOR FINISHES
 A1091 / ADMIN WEST ELEVATION - AS APPROVED



09 VISUAL IMPACT IMAGE
 A1091 / DC HIGH LEVEL SCREENING - AS APPROVED



10 VISUAL IMPACT IMAGE
 A1091 / DC HIGH LEVEL SCREENING - AS PROPOSED



11 VISUAL IMPACT IMAGE
 A1091 / SITE ENTRANCE - AS APPROVED



12 VISUAL IMPACT IMAGE
 A1091 / SITE ENTRANCE - AS PROPOSED



13 VISUAL IMPACT IMAGE
 A1091 / AERIAL VIEW - AS APPROVED



14 VISUAL IMPACT IMAGE
 A1091 / AERIAL VIEW - AS PROPOSED



15 VISUAL IMPACT IMAGE
 A1091 / ADMIN BUILDING AERIAL VIEW - AS APPROVED



16 VISUAL IMPACT IMAGE
 A1091 / ADMIN BUILDING AERIAL VIEW - AS PROPOSED

- AS APPROVED LEGEND:
- 1 Anodized aluminum rainscreen plank system set out with horizontal banding in contrasting shades of dark grey.
 - 2 Natural Stone Faced cladding (Colour tone light grey).
 - 3 Sedum Roof - concealed behind parapet.
 - 4 Glazed Curtain Walling
 - 5 External pavement light and dark grey - Roadstone Milan Block paving
 - 6 Extruded aluminum knee soffit around the windows to provide shading to glazing
 - 7 Fibre cement cladding secret fixed. (Integral Equitone Nature with Equitone Pro protective finish) or equal approved to selected colour
 - 8 Micro louvers set into panels (to match glazing system below) to plant room facade
 - 9 Glass balustrade
 - 10 Proprietary insulated metal wall cladding on steel structure. (Eurobond flat profile panels or equal approved, to selected colour)
 - 11 Mesh/perforated metal fence

- AS PROPOSED LEGEND:
- 1 EF1 Facade aluminum insulated panels RAL 9006
 - 2 EF1.1 Facade aluminum insulated panels RAL 7043
 - 3 EF2 Fire rated facade sandwich panels RAL 7043
 - 4 EF3 Fire rated facade sandwich panels RAL 9006
 - 5 EF4 Stone facade tiles RAL 7045
 - 6 EF5 Metal boxing Panels
 - 7 EF6 Facade Glazing System with vertical sun blinds
 - 8 EF7 facade glazing system
 - 9 EF8 louvre panels RAL 7043
 - 10 EF9 Insulated facade panels RAL 7043

PROJECT: MICROSOFT DUB 14.8.15

CLIENT: GARAGE CASTLE

LOCATION: EXETER ROAD, DUBLIN 22

PHASE: EXTERIOR CLADDING FINISHES AND COI

DATE: 08/2021

SCALE: 1:200

NO. SHEET: 01 OF 1