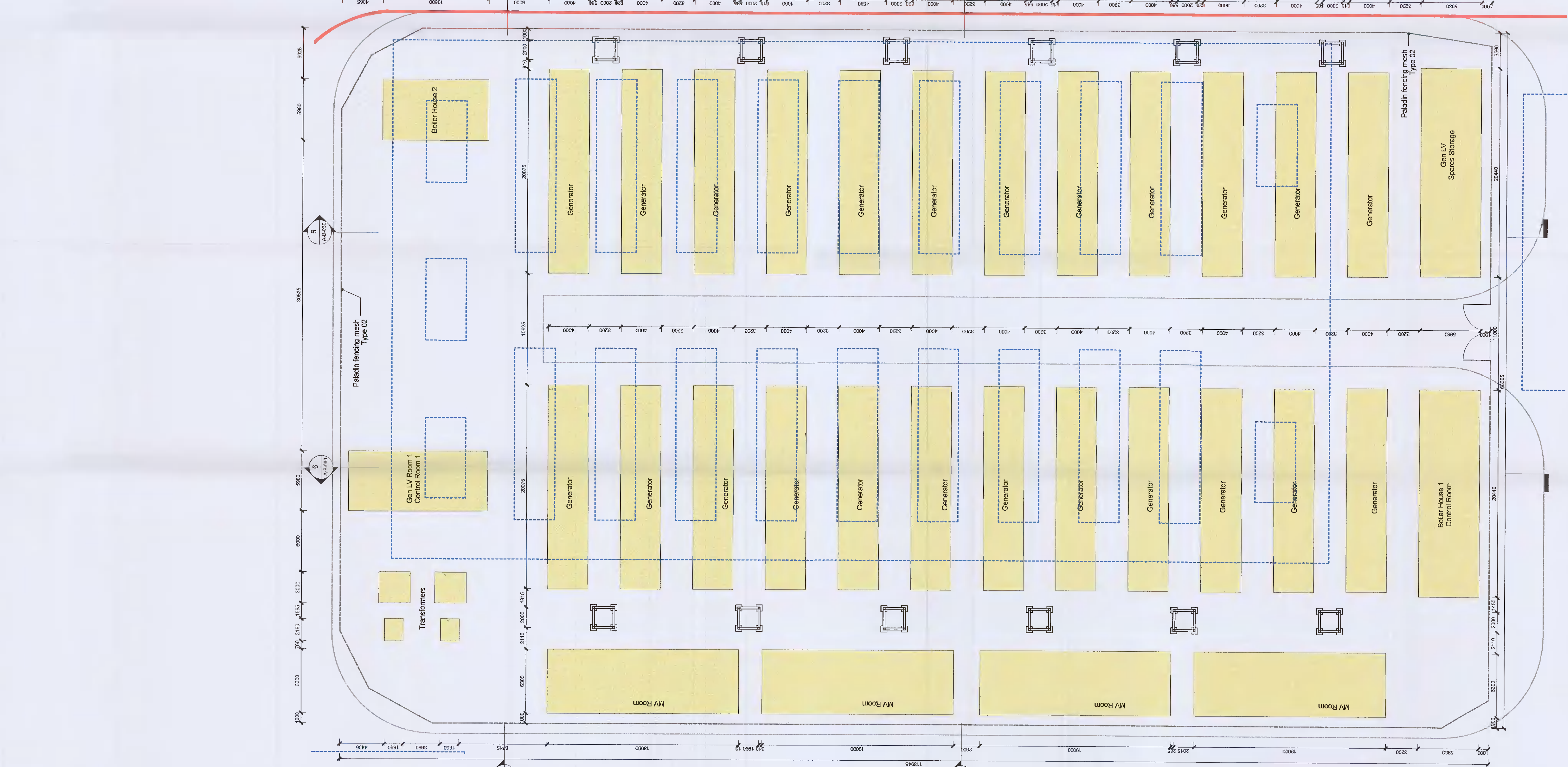
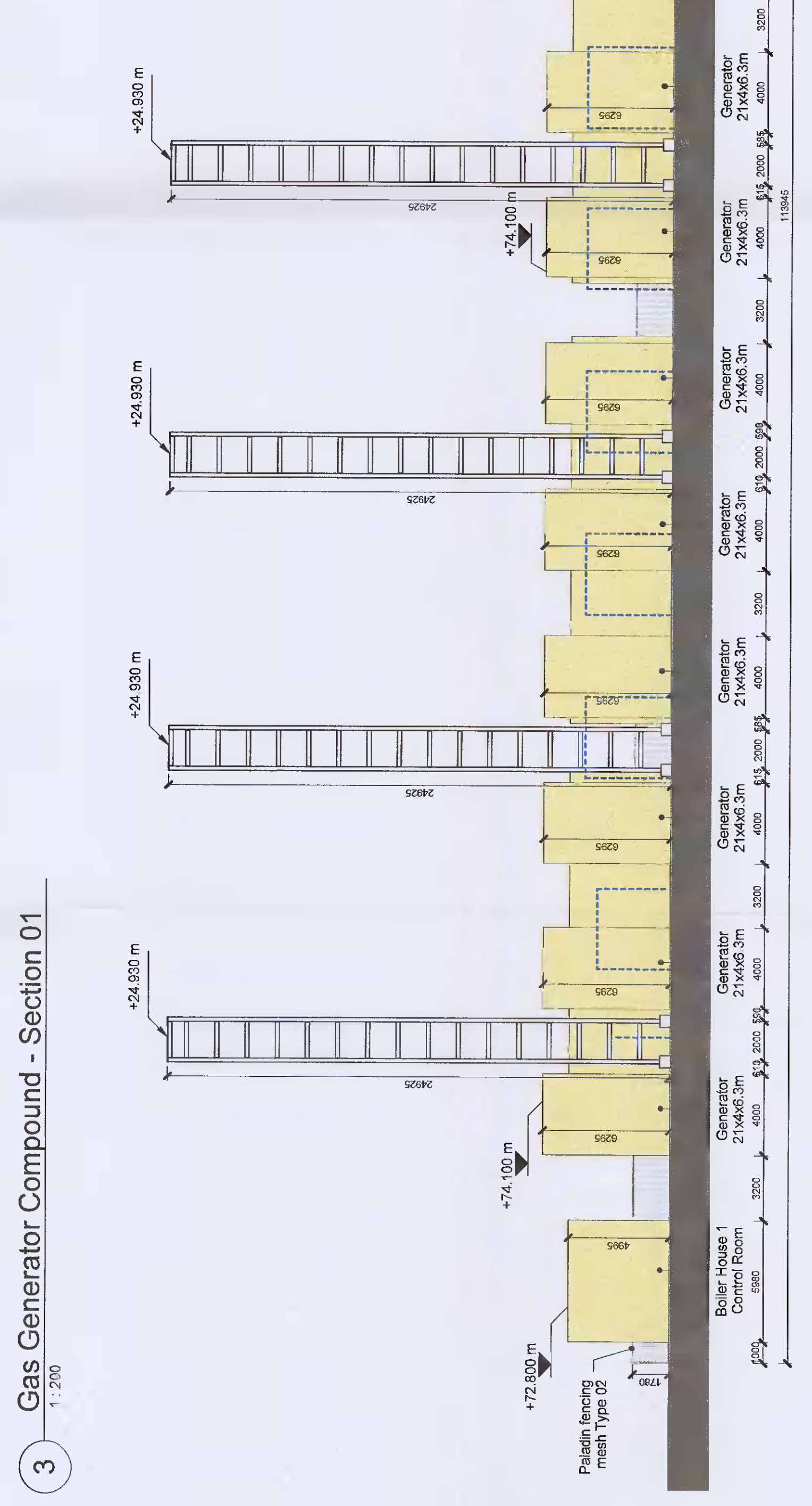
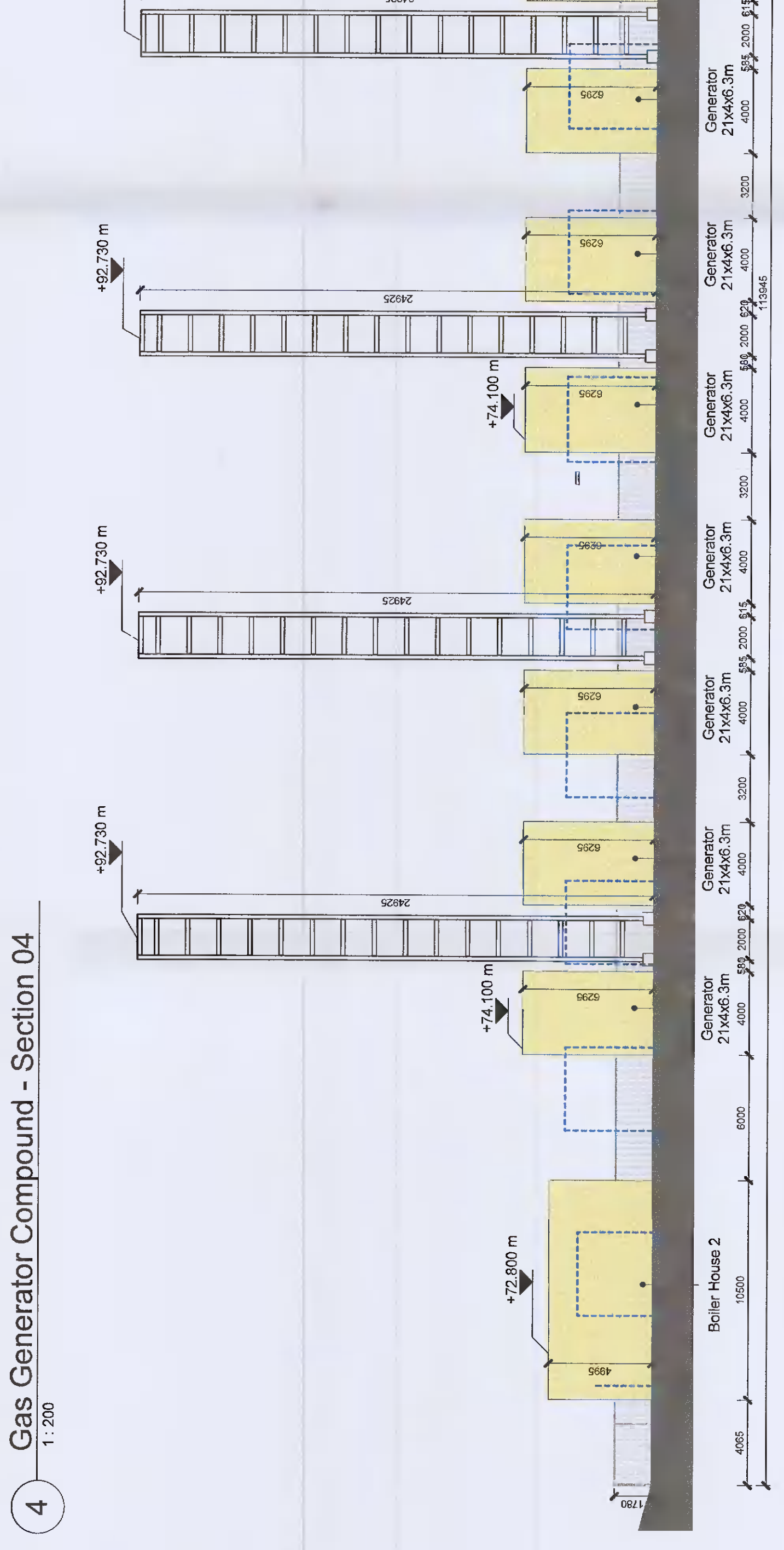
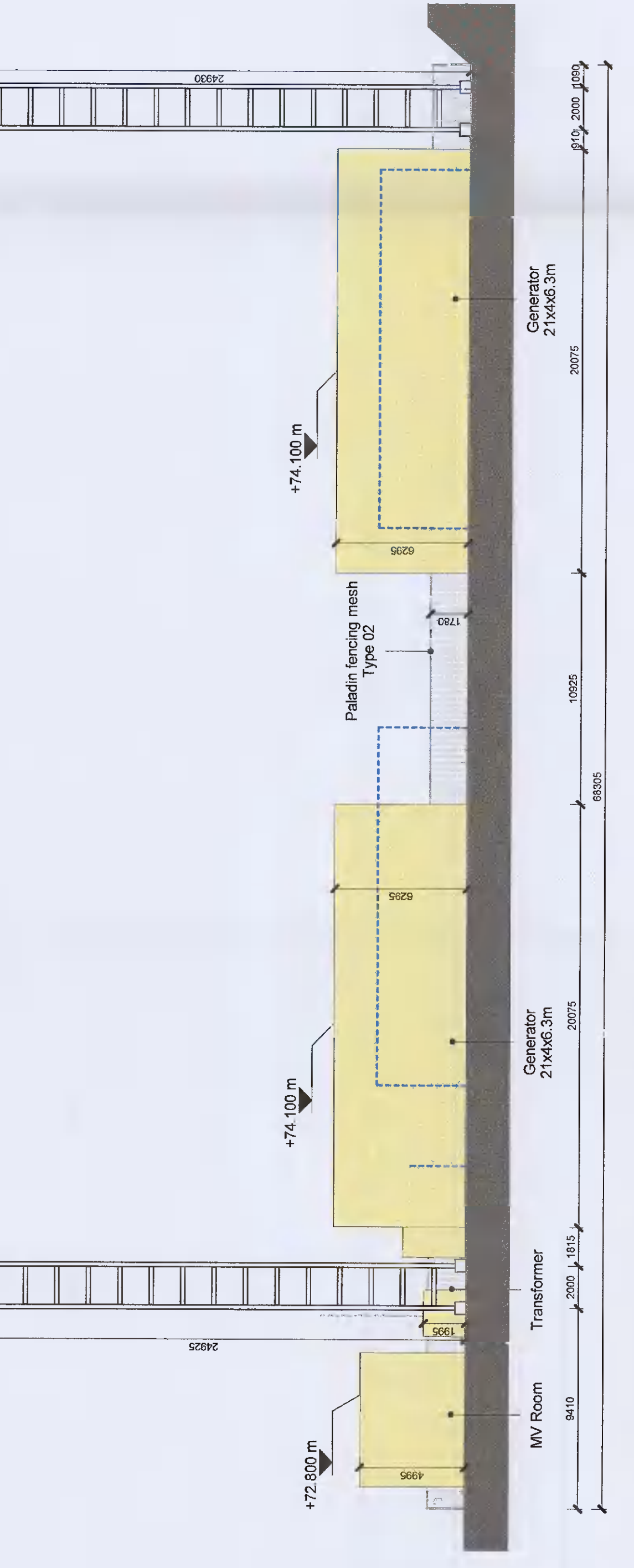
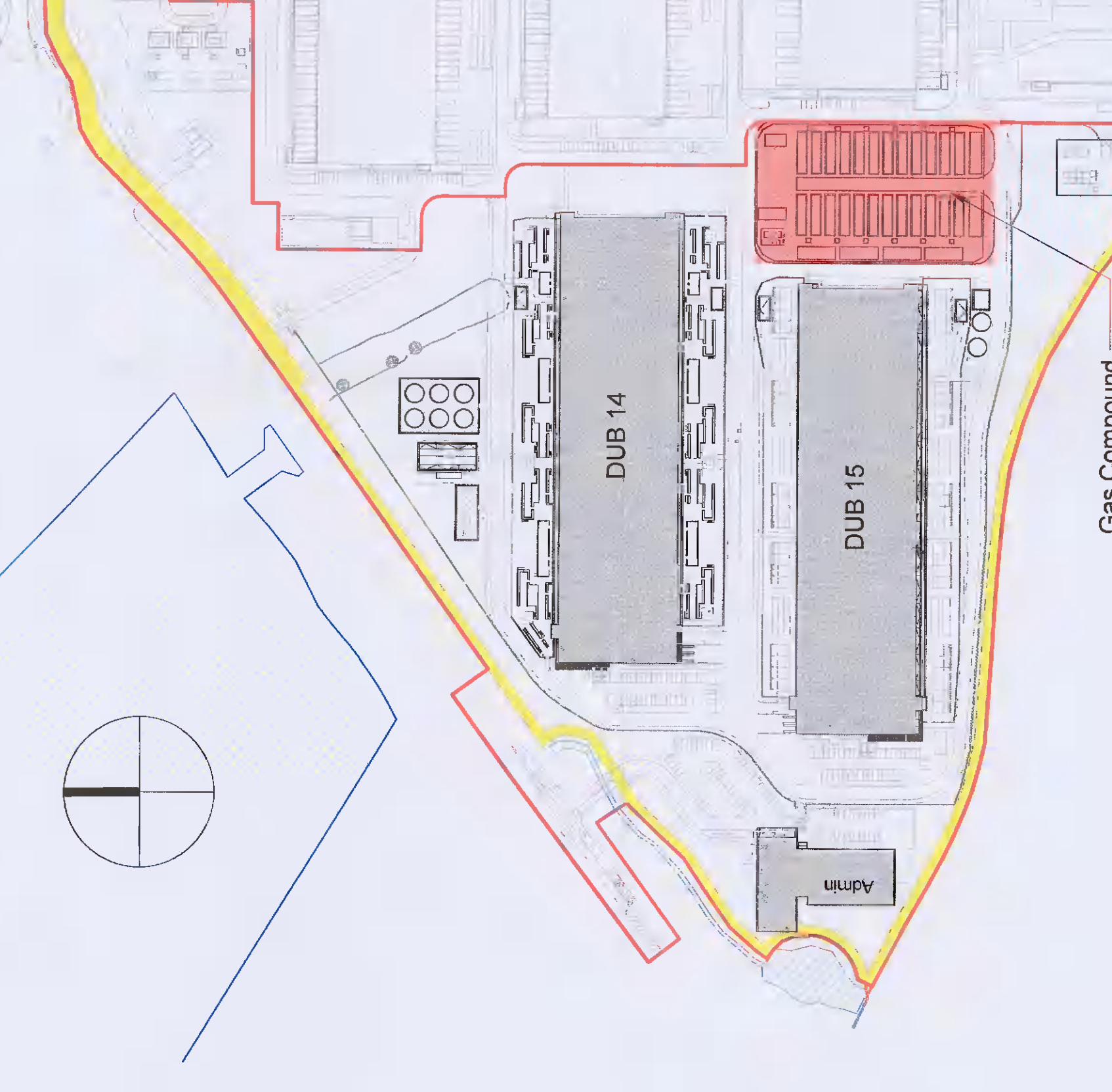


Approvals:
 Client: Microsoft Date: 1/20/12
 Microsoft Regional Engineer: J. Chris Lavo
 Microsoft Region Engineer: J. Chad Gibson
 Microsoft Electrical Engineer: Alan Klein
 Electrical Manager: J. Brian Channing
 Safety Manager: J. Michael O'Connell
 CEA: Loren Meyer / Raymond Neff

General Notes:
 1. This is not an installation drawing and shows design intent information only.
 2. All dimensions are in millimeters (mm) unless noted otherwise. All levels are in meters (m) unless noted otherwise.
 3. Do not scale work to figure dimensions only.
 4. This drawing shall be read in conjunction with all contract documents.
 5. Equipment and plate details are not manufacturer drawings. Equipment shall be installed in accordance with the given constraints and log lead equipment will be installed to accommodate the movements as documented. Structures shall be installed in accordance with the manufacturer's recommendations.
 6. The Contractor will produce fully coordinated and approved drawings for installation prior to start of work.
 7. The Contractor will produce as-built drawings prior to handover for approval.
 8. Handover for approval.
 9. Handover for approval.

LEGEND
 Demosite cables for approved (SD220A0283) building location



P01 | 25.08.11 | Issue for Planning
 Make: 1 Date: Revision Description:

ARUP
 Client: Microsoft
 Project Name: DUB 14/15
 Proposed: Modifications to Previously Approved Scheme.SDA0283.
 Rev: A

Drawn: TBA
Proposed Gas Compound

Scale as: As Indicated
 Date: 1/20/12
 Location: SLAMBA
 Role: ARCHITECTURE
 Status: EC - Suitable for Information - Planning-
 Rev: P01
 Issue No: 279225
 ID: A1052