

DATE: 26 May 2021
DESIGNER: Patrick Redmond
PROJECT No: 20064
PROJECT NAME: Proposed Residential Development at Rookwood REV A



Lighting on entrance road designed to comply with I.S. EN 13201-2:2015 P4, and P5 in the residential area. Both designed to have a minimum point value above 1lux. Energy consumption assessed in accordance with I.S. EN 13201-5:2015.

A product specific S/P ratio has been applied to the calculation to factor visual efficacy under low level white light, in line with guidance offered by PLG 03 (ILP '12).

LMF 0.92 x LDF 0.9 x LSF 1 = MF 0.83 at 100,000 hours with 25 degree ambient. Photometry measured at minimum 15 degree ambient.

Luminaire A & C = 10W. Luminaire B & D = 14W.
Luminaire E = 8W. Luminaire F = 6W. Luminaire G = 3W.
Connected load, averaged for CLO.

Lighting Level ~ Full Ouput

PREPARED BY: Patrick Redmond Hdip BUS, EngTech AMILP, AMSLL, Tech IEI
Redmond Analytical Management Services Ltd.
M~ 086 2356356
O~ 053 9383696
patrick@redmondams.ie
Rosewood House, Mount Seaton, Camolin,
Enniscorthy, Co. Wexford. Y21 K8P3
www.redmondams.ie
Document control: TD 01 Version: 1.0

Layout Report

General Data

Dimensions in Metres Angles in Degrees

Calculation Grids

ID	Grid Name	X	Y	X' Length	Y' Length	X' Spacing	Y' Spacing
1	Access Road TIC	936.23	1004.74	76.99	34.75	1.48	1.45
2	Private Zone 1 Not TIC	989.10	908.05	37.80	57.06	1.58	1.54
3	Private Zone 2 Not TIC	1074.73	949.24	50.85	97.52	1.50	1.48
4	Horizontal assessment 1	938.84	889.09	171.07	167.14	1.49	1.49
5	Vertical assessment 1	1035.33	999.36	14.74	7.00	0.98	0.50
6	Vertical assessment 2	964.86	995.54	14.75	7.00	0.98	0.50

Luminaires

Luminaire A Data



Supplier	Urbs Schröder
Type	AXIA 2 1 5165 Integrated lenses Rear louvers 8 OSLON SQUARE
Lamp(s)	8 OSLON SQUARE GIANT@350mA WW 730 230V
LampFlux(klm)/Colour	1 02 WW 3000K/70
File Name	AXIA 2 1 5165 8 OSLON SQUARE GIANT 35 0mA WW 730 10.3W 434262 Integrated lens.
Maintenance Factor	0.83
Imax70,80,90(cd/klm)	1690.7, 164.7, 3.2
Lamp S/P Ratio	1.35
No. in Project	2

Luminaire B Data



Supplier	Urbs Schröder
Type	AXIA 2 1 5233 Integrated lenses Front louvers 8 OSLON SQUARE
Lamp(s)	8 OSLON SQUARE GIANT@500mA WW 730 230V
LampFlux(klm)/Colour	1 16 WW 3000K/70
File Name	AXIA 2 1 5233 8 OSLON SQUARE GIANT 50 0mA WW 730 14.2W 434742 Integrated lens.
Maintenance Factor	0.83
Imax70,80,90(cd/klm)	386.3, 74, 1.6
Lamp S/P Ratio	1.35
No. in Project	2

Luminaire C Data



Supplier	Urbs Schröder
Type	AXIA 2 1 5165 Integrated lenses Rear louvers 4 OSLON SQUARE
Lamp(s)	4 OSLON SQUARE GIANT@680mA WW 730 230V
LampFlux(klm)/Colour	0.91 WW 3000K/70
File Name	AXIA 2 1 5165 4 OSLON SQUARE GIANT 68 0mA WW 730 10.3W 434262 Integrated lens.
Maintenance Factor	0.83
Imax70,80,90(cd/klm)	1690.7, 164.7, 3.2
Lamp S/P Ratio	1.35
No. in Project	2

Luminaire D Data



Supplier	Urbs Schröder
Type	AXIA 2 1 5187 Integrated lenses Front louvers 8 OSLON SQUARE
Lamp(s)	8 OSLON SQUARE GIANT@500mA WW 730 230V
LampFlux(klm)/Colour	0.97 WW 3000K/70
File Name	AXIA 2 1 5187 8 OSLON SQUARE GIANT 50 0mA WW 730 14.2W 434672 Integrated lens.
Maintenance Factor	0.83
Imax70,80,90(cd/klm)	951.3, 78.6, 2.4
Lamp S/P Ratio	1.35
No. in Project	1

Luminaires



Luminaire E Data

Supplier	Urbis Schreder
Type	AXIA 2 1 5241 Integrated lenses Rear louvers 4 OSOLON SQUARE
Lamp(s)	4 OSOLON SQUARE GIANT@500mA WW 730 230V
LampFlux(klm)/Colour	0.66 WW 3000K/70
File Name	AXIA 2 1 5241 4 OSOLON SQUARE GIANT 50 0mA WW 730 7 8W 434762 Integrated lense
Maintenance Factor	0.83
Imax70,80,90(cd/klm)	913.2 62.3 2.4
Lamp S/P Ratio	1.35
No. in Project	9



Luminaire F Data

Supplier	Urbis Schreder
Type	AXIA 2 1 5167 Integrated lenses Front-Rear 4 OSOLON SQUARE GI
Lamp(s)	4 OSOLON SQUARE GIANT@350mA WW 730 230V
LampFlux(klm)/Colour	0.26 WW 3000K/70
File Name	AXIA 2 1 5167 4 OSOLON SQUARE GIANT 35 0mA WW 730 5 7W 434352 Integrated lense
Maintenance Factor	0.83
Imax70,80,90(cd/klm)	1396.7 266.2 3.6
Lamp S/P Ratio	1.35
No. in Project	1



Luminaire G Data

Supplier	Urbis Schreder
Type	PHAROS 5119 Cylindrical, PC, Smooth Asymmetrical 8 XP-G3@350
Lamp(s)	8 XP-G3@350mA WW 730 230V
LampFlux(klm)/Colour	0.15 WW 3000K/70
File Name	PHAROS 5119 8 XP-G3 350mA WW 730 11 W 448232 Cylindrical PC, Smooth AS 230V
Maintenance Factor	0.83
Imax70,80,90(cd/klm)	490.6 612.7 26.8
Lamp S/P Ratio	1.35
No. in Project	7



Luminaire H Data

Supplier	_Historic Lantens
Type	QB2B1055.4A + QB2M
Lamp(s)	55W SOX
Lamp Flux (klm)	8.10
File Name	r0004957.cib
Maintenance Factor	0.83
Imax70,80,90(cd/klm)	179.3 135.2 67.6
Lamp S/P Ratio	0.00
No. in Project	2

Layout

ID	Type	X	Y	Height	Angle	Tilt	Cant	Out-reach	Target X	Target Y	Target Z
PL 1	A	956.14	1023.35	6.00	242.00	5.00	0.00	1.00			
PL 2	B	973.18	999.89	6.00	41.00	5.00	0.00	0.50			
PL 3	E	984.41	984.14	6.00	63.00	5.00	0.00	0.50			
PL 4	C	993.80	992.10	6.00	329.00	0.00	0.00	1.00			
PL 5	C	995.49	973.22	6.00	339.00	0.00	0.00	0.50			
PL 6	F	995.41	973.26	6.00	159.00	0.00	0.00	0.50			
PVL 7	A	1017.01	1003.81	6.00	93.00	5.00	0.00	1.00			
PVL 8	E	1001.22	939.63	6.00	203.00	5.00	0.00	0.50			
PVL 9	E	990.35	921.99	6.00	293.00	5.00	0.00	0.50			
PVL 10	E	1007.45	924.38	6.00	201.00	5.00	0.00	0.50			
PVL 11	E	1036.03	1000.08	6.00	68.00	5.00	0.00	0.50			
PVL 12	E	1047.34	990.96	6.00	43.00	5.00	0.00	0.50			
PVL 13	E	1072.67	985.33	6.00	214.00	5.00	0.00	0.50			
PVL 14	E	1055.20	978.70	6.00	26.00	5.00	0.00	0.50			
PVL 15	G	1051.39	1016.22	1.00	274.00	0.00	0.00	0.00			
PVL 16	G	1066.98	968.42	1.00	111.00	0.00	0.00	0.00			
PL 17	D	976.98	1007.24	6.00	65.00	0.00	0.00	0.50			
PVL 18	E	1005.76	999.61	6.00	155.00	5.00	0.00	0.50			
PVL 19	B	996.50	952.52	6.00	203.00	5.00	0.00	0.50			
PVL 20	G	1053.28	1005.73	1.00	233.00	0.00	0.00	0.00			
PVL 21	G	1044.08	1013.59	1.00	162.00	0.00	0.00	0.00			
PVL 22	G	1046.66	1010.11	1.00	231.00	0.00	0.00	0.00			
PVL 23	G	1074.01	971.52	1.00	115.00	0.00	0.00	0.00			
PVL 24	G	1059.10	969.72	1.00	22.00	0.00	0.00	0.00			
Existing 25	H	932.06	996.65	6.00	348.00	5.00	0.00	1.00			
Existing 26	H	934.42	1021.69	6.00	348.00	5.00	0.00	1.00			

Horizontal Illuminance (lux)

Access Road TIC



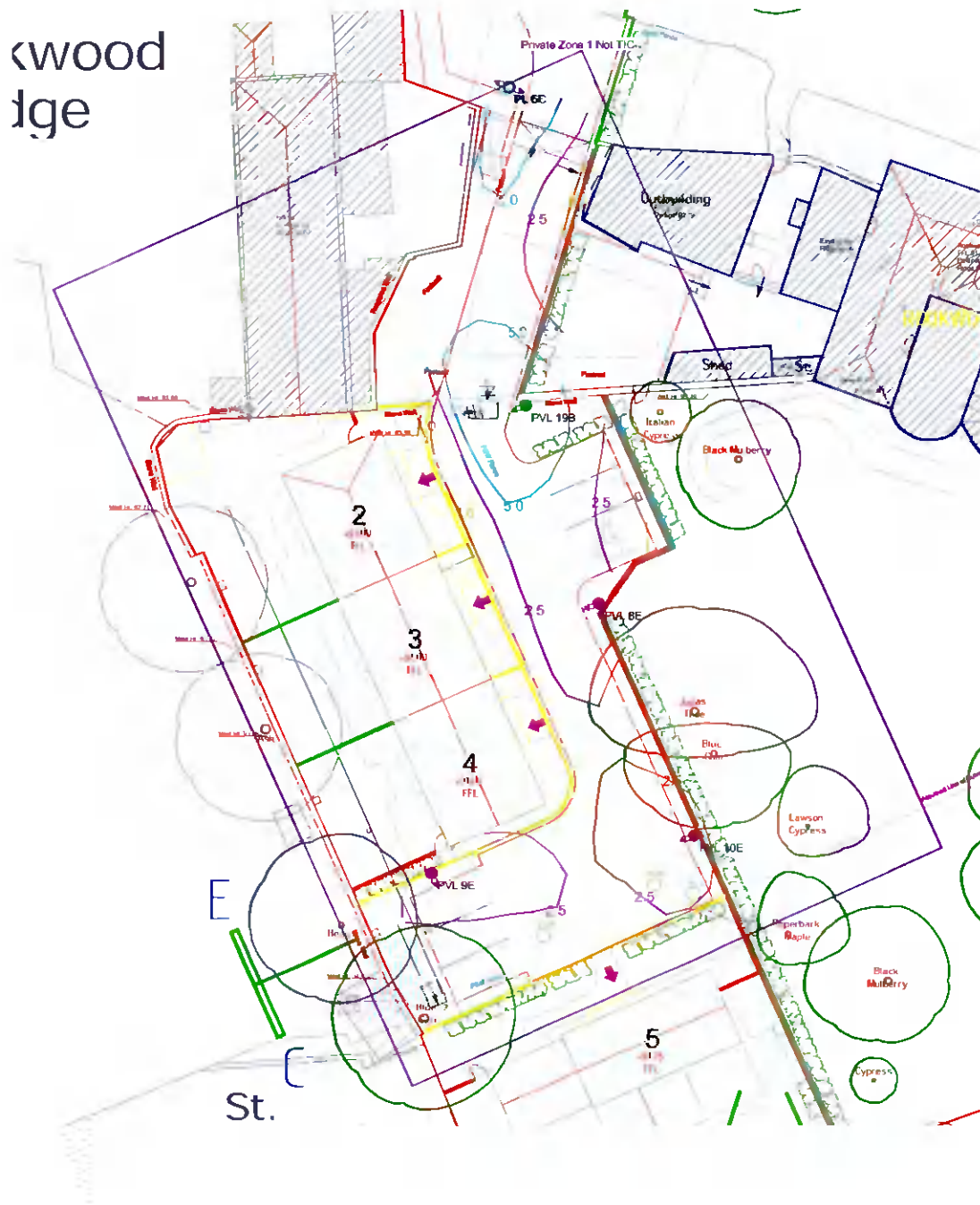
Results

Eav	3.86
Emin	1.13
E _{max}	10.07
E _{min} /E _{max}	0.11
E _{min} /E _{av}	0.29

Horizontal Illuminance (lux)

Private Zone 1 Not TIC

Rookwood
 Edge



Results

Eav	3.35
Emin	1.10
E _{max}	9.59
E _{min} /E _{max}	0.11
E _{min} /E _{av}	0.33

Horizontal Illuminance (lux)

Horizontal assessment 1

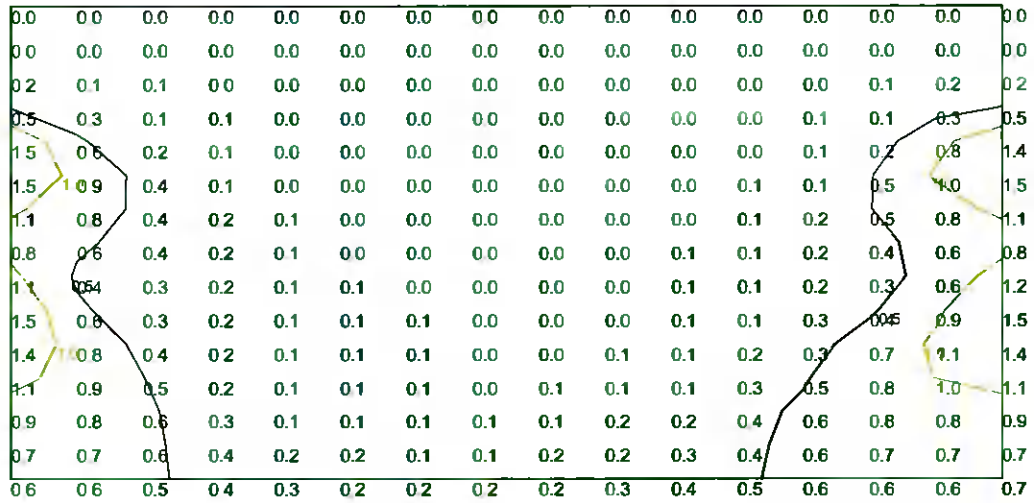


Results

Eav	0.49
Emin	0.00
E _{max}	10.27
E _{min} /E _{max}	0.00
E _{min} /E _{av}	0.00

Illuminance (lux)

Vertical assessment 1

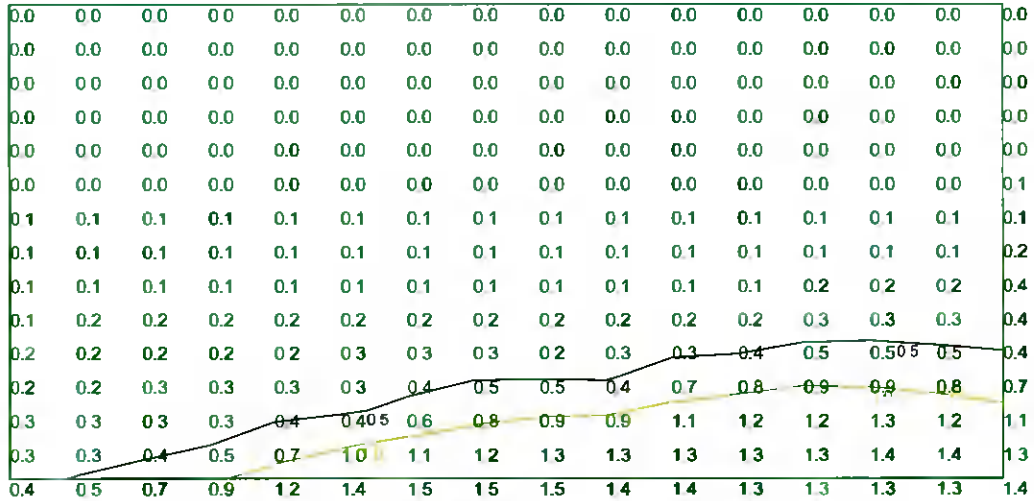


Results

Eav	0.29
Emin	0.00
Emax	1.54
Emin/Emax	0.00
Emin/Eav	0.00

Illuminance (lux)

Vertical assessment 2



Results

Eav	0.30
Emin	0.02
E _{max}	1.50
E _{min} /E _{max}	0.01
E _{min} /E _{av}	0.05