

DESIGN ISSUE
THE DESIGN IS SUBJECT TO PLANNING APPROVAL AND DETAILED DESIGN.



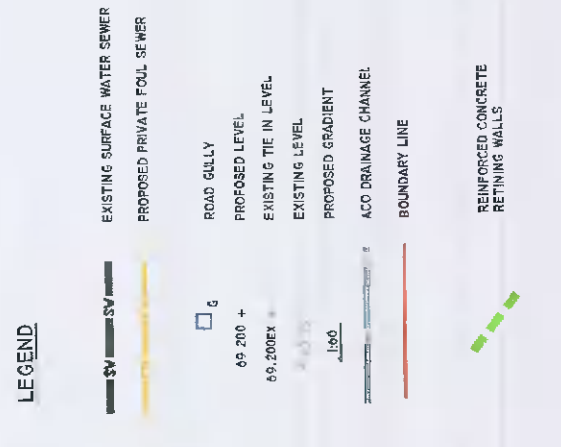
Client:



HAZARD IDENTIFICATION LEGEND:
HAZARD IDENTIFICATION (if none state none relevant)

CONTROL AND MITIGATION MEASURES

NOTE:
Hazards listed above are only those considered significant risks and:
a) not likely to be obvious to a competent contractor or other designers;
b) unusual, or
c) likely to be difficult to manage effectively

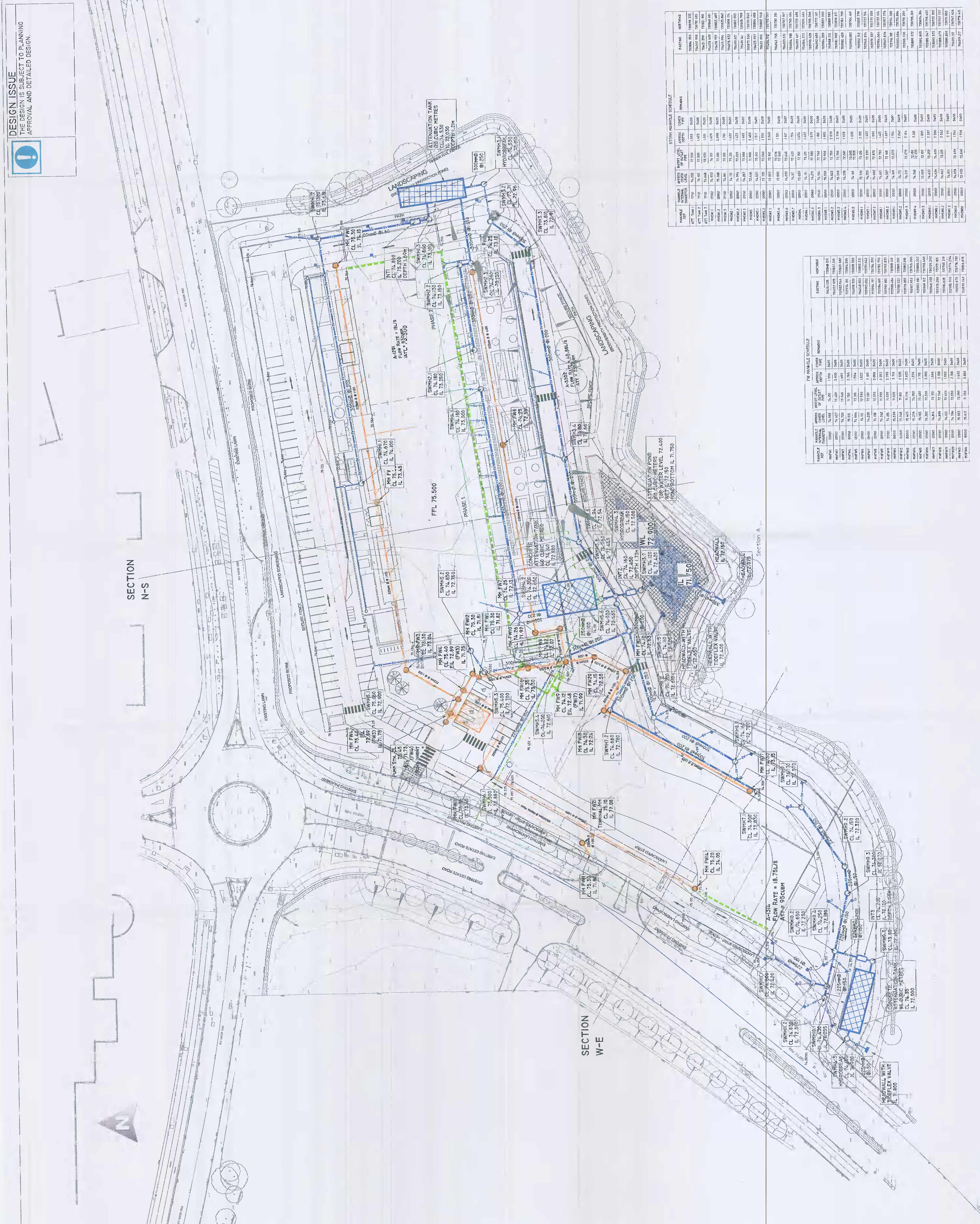


Key:

| REV | DATE | REVISION | BY | CHK | APP |
|-----|------|----------|----|-----|-----|
| | | | | | |

Project: Equinix DB081
Drawing Title: SITE DRAINAGE
Drawing Number: DB081-PIN-00-ZZ-DR-C-PLAN-1205
Scale: 1:500
Paper Size: A1
Revision: P02

PINNACLE
CONSULTING ENGINEERS
SIXTH FLOOR PROSPECT HOUSE 100 NEW OXFORD STREET LONDON WC1A 1HB TEL: 0207 0453410



STORM MANHOLE SCHEDULE

| MANHOLE ID | APPROX. LEVEL | APPROX. DEPTH | COVER TYPE | REMARKS |
|------------|---------------|---------------|------------|---------|
| MH101 | 72.42 | 1.53 | 500 | |
| MH102 | 72.00 | 1.43 | 500 | |
| MH103 | 72.00 | 1.43 | 500 | |
| MH104 | 72.00 | 1.43 | 500 | |
| MH105 | 72.00 | 1.43 | 500 | |
| MH106 | 72.00 | 1.43 | 500 | |
| MH107 | 72.00 | 1.43 | 500 | |
| MH108 | 72.00 | 1.43 | 500 | |
| MH109 | 72.00 | 1.43 | 500 | |
| MH110 | 72.00 | 1.43 | 500 | |
| MH111 | 72.00 | 1.43 | 500 | |
| MH112 | 72.00 | 1.43 | 500 | |
| MH113 | 72.00 | 1.43 | 500 | |
| MH114 | 72.00 | 1.43 | 500 | |
| MH115 | 72.00 | 1.43 | 500 | |
| MH116 | 72.00 | 1.43 | 500 | |
| MH117 | 72.00 | 1.43 | 500 | |
| MH118 | 72.00 | 1.43 | 500 | |
| MH119 | 72.00 | 1.43 | 500 | |
| MH120 | 72.00 | 1.43 | 500 | |
| MH121 | 72.00 | 1.43 | 500 | |
| MH122 | 72.00 | 1.43 | 500 | |
| MH123 | 72.00 | 1.43 | 500 | |
| MH124 | 72.00 | 1.43 | 500 | |
| MH125 | 72.00 | 1.43 | 500 | |
| MH126 | 72.00 | 1.43 | 500 | |
| MH127 | 72.00 | 1.43 | 500 | |
| MH128 | 72.00 | 1.43 | 500 | |
| MH129 | 72.00 | 1.43 | 500 | |
| MH130 | 72.00 | 1.43 | 500 | |
| MH131 | 72.00 | 1.43 | 500 | |
| MH132 | 72.00 | 1.43 | 500 | |
| MH133 | 72.00 | 1.43 | 500 | |
| MH134 | 72.00 | 1.43 | 500 | |
| MH135 | 72.00 | 1.43 | 500 | |
| MH136 | 72.00 | 1.43 | 500 | |
| MH137 | 72.00 | 1.43 | 500 | |
| MH138 | 72.00 | 1.43 | 500 | |
| MH139 | 72.00 | 1.43 | 500 | |
| MH140 | 72.00 | 1.43 | 500 | |
| MH141 | 72.00 | 1.43 | 500 | |
| MH142 | 72.00 | 1.43 | 500 | |
| MH143 | 72.00 | 1.43 | 500 | |
| MH144 | 72.00 | 1.43 | 500 | |
| MH145 | 72.00 | 1.43 | 500 | |
| MH146 | 72.00 | 1.43 | 500 | |
| MH147 | 72.00 | 1.43 | 500 | |
| MH148 | 72.00 | 1.43 | 500 | |
| MH149 | 72.00 | 1.43 | 500 | |
| MH150 | 72.00 | 1.43 | 500 | |

FW MANHOLE SCHEDULE

| MANHOLE ID | APPROX. LEVEL | APPROX. DEPTH | COVER TYPE | REMARKS |
|------------|---------------|---------------|------------|---------|
| MH151 | 72.00 | 1.43 | 500 | |
| MH152 | 72.00 | 1.43 | 500 | |
| MH153 | 72.00 | 1.43 | 500 | |
| MH154 | 72.00 | 1.43 | 500 | |
| MH155 | 72.00 | 1.43 | 500 | |
| MH156 | 72.00 | 1.43 | 500 | |
| MH157 | 72.00 | 1.43 | 500 | |
| MH158 | 72.00 | 1.43 | 500 | |
| MH159 | 72.00 | 1.43 | 500 | |
| MH160 | 72.00 | 1.43 | 500 | |
| MH161 | 72.00 | 1.43 | 500 | |
| MH162 | 72.00 | 1.43 | 500 | |
| MH163 | 72.00 | 1.43 | 500 | |
| MH164 | 72.00 | 1.43 | 500 | |
| MH165 | 72.00 | 1.43 | 500 | |
| MH166 | 72.00 | 1.43 | 500 | |
| MH167 | 72.00 | 1.43 | 500 | |
| MH168 | 72.00 | 1.43 | 500 | |
| MH169 | 72.00 | 1.43 | 500 | |
| MH170 | 72.00 | 1.43 | 500 | |
| MH171 | 72.00 | 1.43 | 500 | |
| MH172 | 72.00 | 1.43 | 500 | |
| MH173 | 72.00 | 1.43 | 500 | |
| MH174 | 72.00 | 1.43 | 500 | |
| MH175 | 72.00 | 1.43 | 500 | |
| MH176 | 72.00 | 1.43 | 500 | |
| MH177 | 72.00 | 1.43 | 500 | |
| MH178 | 72.00 | 1.43 | 500 | |
| MH179 | 72.00 | 1.43 | 500 | |
| MH180 | 72.00 | 1.43 | 500 | |

STORM MANHOLE SCHEDULE

| MANHOLE ID | APPROX. LEVEL | APPROX. DEPTH | COVER TYPE | REMARKS |
|------------|---------------|---------------|------------|---------|
| MH181 | 72.00 | 1.43 | 500 | |
| MH182 | 72.00 | 1.43 | 500 | |
| MH183 | 72.00 | 1.43 | 500 | |
| MH184 | 72.00 | 1.43 | 500 | |
| MH185 | 72.00 | 1.43 | 500 | |
| MH186 | 72.00 | 1.43 | 500 | |
| MH187 | 72.00 | 1.43 | 500 | |
| MH188 | 72.00 | 1.43 | 500 | |
| MH189 | 72.00 | 1.43 | 500 | |
| MH190 | 72.00 | 1.43 | 500 | |
| MH191 | 72.00 | 1.43 | 500 | |
| MH192 | 72.00 | 1.43 | 500 | |
| MH193 | 72.00 | 1.43 | 500 | |
| MH194 | 72.00 | 1.43 | 500 | |
| MH195 | 72.00 | 1.43 | 500 | |
| MH196 | 72.00 | 1.43 | 500 | |
| MH197 | 72.00 | 1.43 | 500 | |
| MH198 | 72.00 | 1.43 | 500 | |
| MH199 | 72.00 | 1.43 | 500 | |
| MH200 | 72.00 | 1.43 | 500 | |

FW MANHOLE SCHEDULE

| MANHOLE ID | APPROX. LEVEL | APPROX. DEPTH | COVER TYPE | REMARKS |
|------------|---------------|---------------|------------|---------|
| MH201 | 72.00 | 1.43 | 500 | |
| MH202 | 72.00 | 1.43 | 500 | |
| MH203 | 72.00 | 1.43 | 500 | |
| MH204 | 72.00 | 1.43 | 500 | |
| MH205 | 72.00 | 1.43 | 500 | |
| MH206 | 72.00 | 1.43 | 500 | |
| MH207 | 72.00 | 1.43 | 500 | |
| MH208 | 72.00 | 1.43 | 500 | |
| MH209 | 72.00 | 1.43 | 500 | |
| MH210 | 72.00 | 1.43 | 500 | |
| MH211 | 72.00 | 1.43 | 500 | |
| MH212 | 72.00 | 1.43 | 500 | |
| MH213 | 72.00 | 1.43 | 500 | |
| MH214 | 72.00 | 1.43 | 500 | |
| MH215 | 72.00 | 1.43 | 500 | |
| MH216 | 72.00 | 1.43 | 500 | |
| MH217 | 72.00 | 1.43 | 500 | |
| MH218 | 72.00 | 1.43 | 500 | |
| MH219 | 72.00 | 1.43 | 500 | |
| MH220 | 72.00 | 1.43 | 500 | |