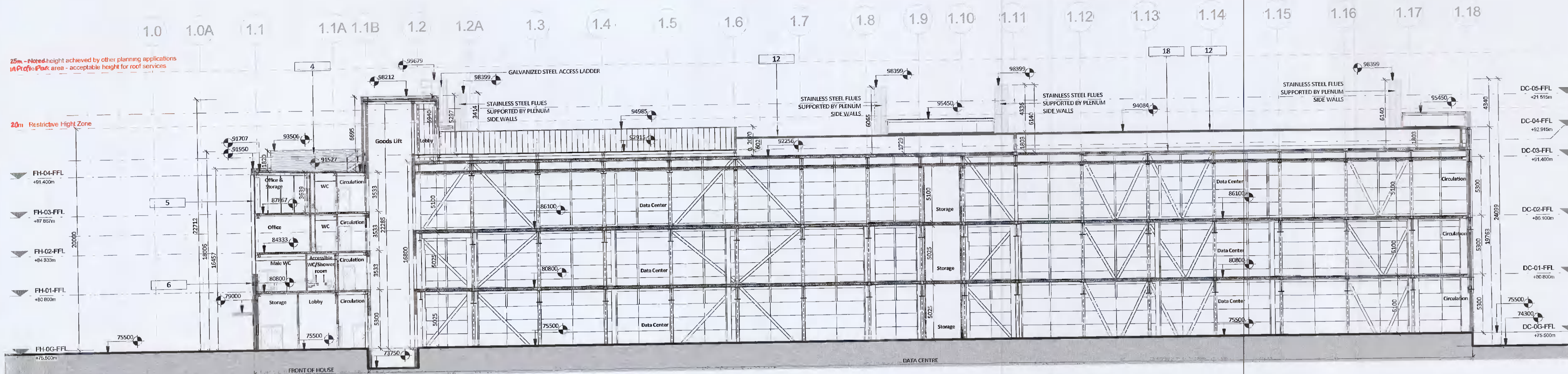
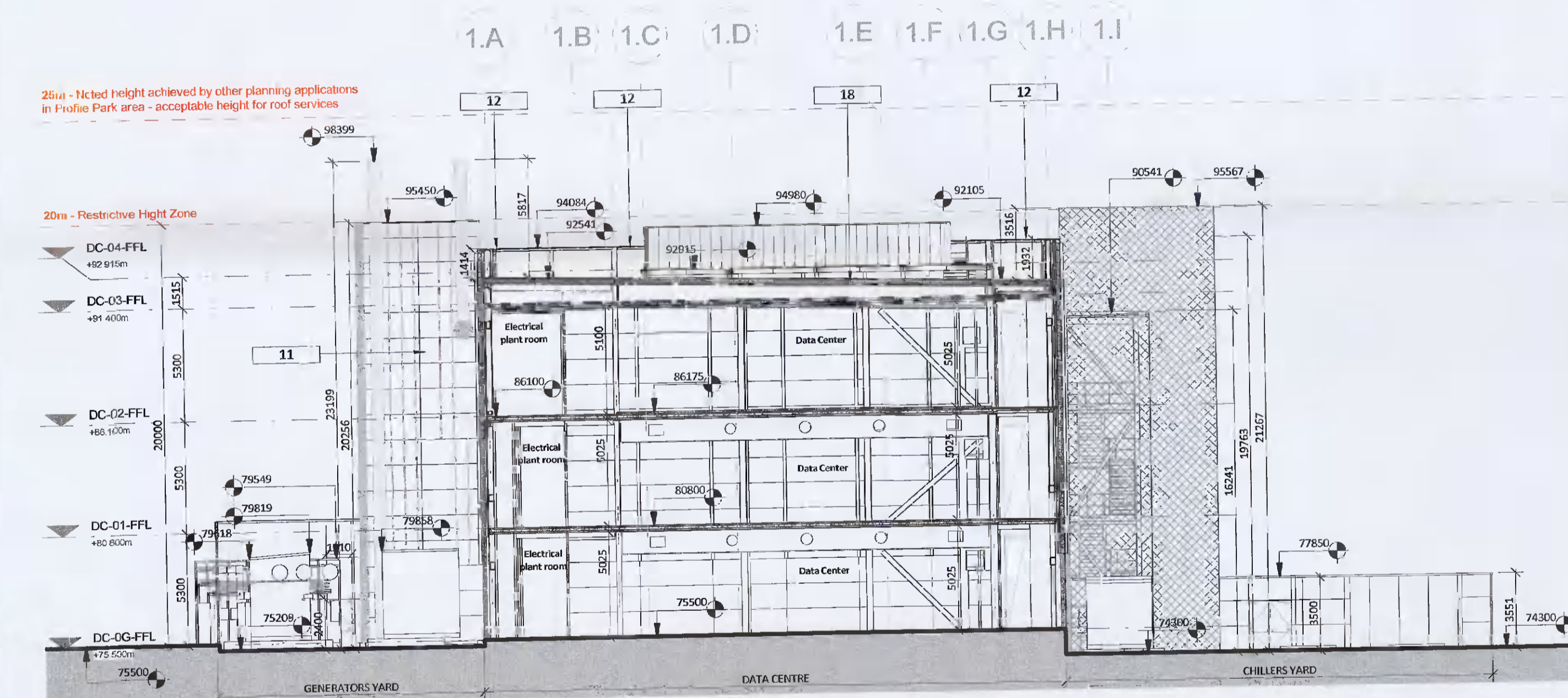


HAZARD IDENTIFICATION (if none state 'none relevant')	CONTROL AND MITIGATION MEASURES

NOTE:
 Hazards listed above are only those considered significant risks and:
 a) not likely to be obvious to a competent contractor or other designers;
 b) unusual; or
 c) likely to be difficult to manage effectively



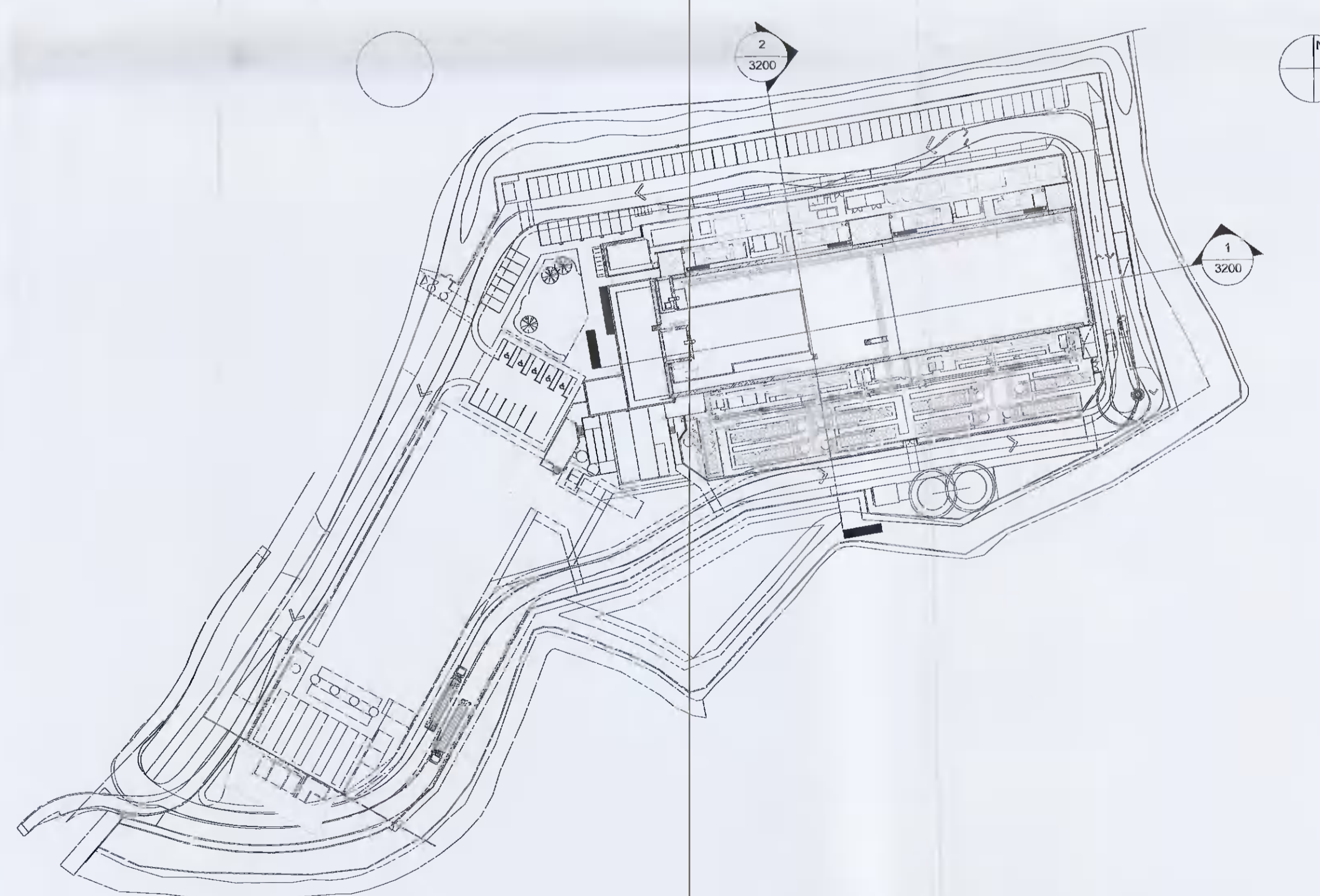
1 Section A-A
 1 : 200



2 Section B-B
 1 : 200

MATERIAL LEGEND:

- | | |
|---|--|
| <p>1 COMPOSITE CLADDING PANEL INSTALLED HORIZONTALLY, FLAT PANEL, COLOUR DARK GREY - RAL 7016</p> <p>2 COMPOSITE CLADDING PANEL INSTALLED HORIZONTALLY, FLAT PANEL, COLOUR DARK GREY - RAL 7016 WITH 150MM FINS IN MATCHING COLOUR. FINS INSTALLED AT PANELS VERTICAL JOINTS AT 2.5M CENTRES</p> <p>3 ALUMINIUM LOUVRE PANEL SYSTEM - DARK GREY - RAL 7016</p> <p>4 ALUMINIUM LOUVRE SCREEN - COLOUR DARK GREY - RAL 7016</p> <p>5 GLAZED CURTAIN WALL SYSTEM WITH FINS PROTRUDING 150mm FROM EACH MULLION FRAME. COLOUR TO MATCH FIBRE CEMENT CLADDING (GRANITE)</p> <p>6 FIBRE-CEMENT CLADDING PANELS WITH VERTICAL GROOVED TEXTURE COLOUR GRANITE</p> <p>7 COMPOSITE CLADDING PANEL, INSTALLED VERTICALLY, COLOUR LIGHT GREY - RAL 7035</p> <p>8 ACOUSTIC SCREENING WALL, INSTALLED VERTICALLY COLOUR LIGHT GREY - RAL 7035</p> <p>9 FIBRE-CEMENT CLADDING PANELS WITH VERTICAL GROOVED TEXTURE COLOUR ANTHRACITE GREY</p> | <p>10 STAINLESS STEEL WOVEN METAL MESH CLADDING ON STEEL STRUCTURE PAINTED RED. STAIR STRINGERS ALSO PAINTED IN RED COLOUR</p> <p>11 COMPOSITE CLADDING PANEL, FLAT, COLOUR LIGHT GREY - RAL 7035 ALUMINIUM FINS PROTRUDING 150MM IN MATCHING COLOUR WITH INDIVIDUAL FINS IN RED COLOUR. FINS INSTALLED AT RANDOM PATTERN</p> <p>12 PRESSED METAL CAPPING POWDERCOATED TO COLOUR TO MATCH CLADDING BELOW</p> <p>13 STEEL DOOR POWDERCOATED IN RED COLOUR - RAL 7035</p> <p>14 INSULATED ROLLER SHUTTER, COLOUR RAL 7016</p> <p>15 SCREENING WALL, COMPOSITE PANELS WITH MICROPORBIS PATTERN, INSTALLED VERTICALLY COLOUR LIGHT GREY - RAL 7035</p> <p>16 FIBRE-CEMENT CLADDING PANELS, FLAT PANELS COLOUR ANTHRACITE GREY</p> <p>17 ALUMINIUM CLADDING TO CANOPY, POWDERCOATED TO RAL 7016, UNDERSIDE IN RED COLOUR</p> <p>18 SINGLE PLY ROOF MEMBRANE IN WHITE COLOUR</p> |
|---|--|



3 Key Plan
 1 : 1000

PO1	2021-05-16	Issued for Planning	NC	MB	JS
REV	DATE	DESCRIPTION	DWN	CHK	APP

Key:

Project:
 DB8 - Equinix

Drawing Title:
 Proposed Sections

Drawing Number:
 DB080-RKD-ZZ-ZZ-DR-A-ZZZZ- 3200

Scale: Paper Size: Purpose: Revision:
 1:200cated A1 S4 P01