

Client:



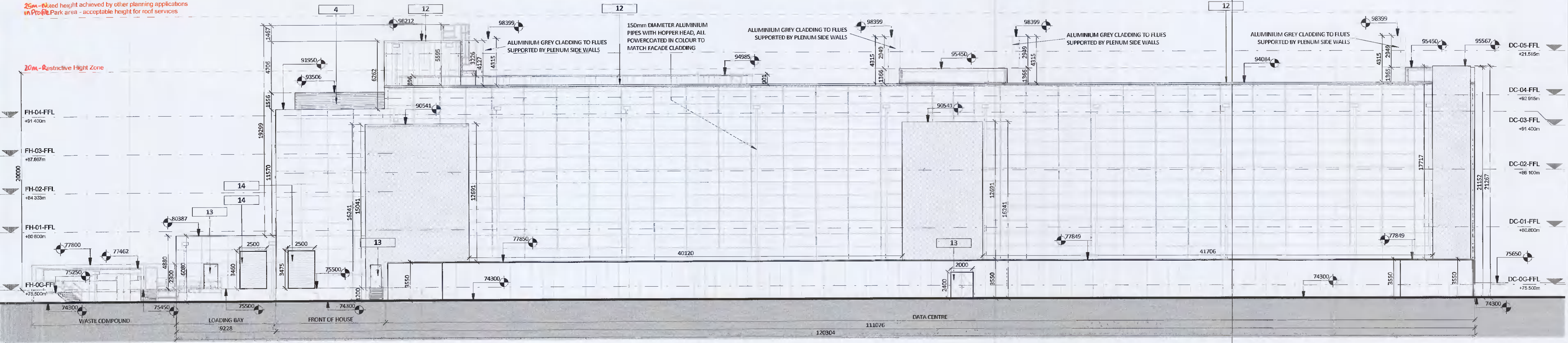
HAZARD IDENTIFICATION LEGEND:

HAZARD IDENTIFICATION (if none state 'none relevant')	CONTROL AND MITIGATION MEASURES
DC-05-FFL +21.515m	
DC-04-FFL +22.915m	
DC-03-FFL +21.400m	
DC-02-FFL +26.100m	
DC-01-FFL +20.800m	
DC-00-FFL +25.500m	

**NOTE:**  
Hazards listed above are only those considered significant risks and:

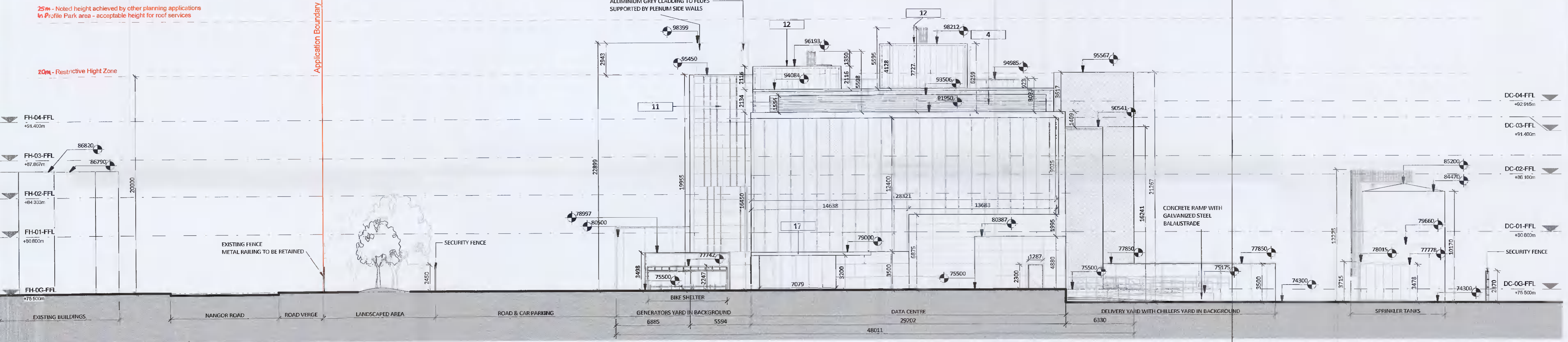
- not likely to be obvious to a competent contractor or other designers;
- unusual, or
- likely to be difficult to manage effectively

25m - Noted height achieved by other planning applications in Profile Park area - acceptable height for roof services



1 Proposed South Elevation  
1:200

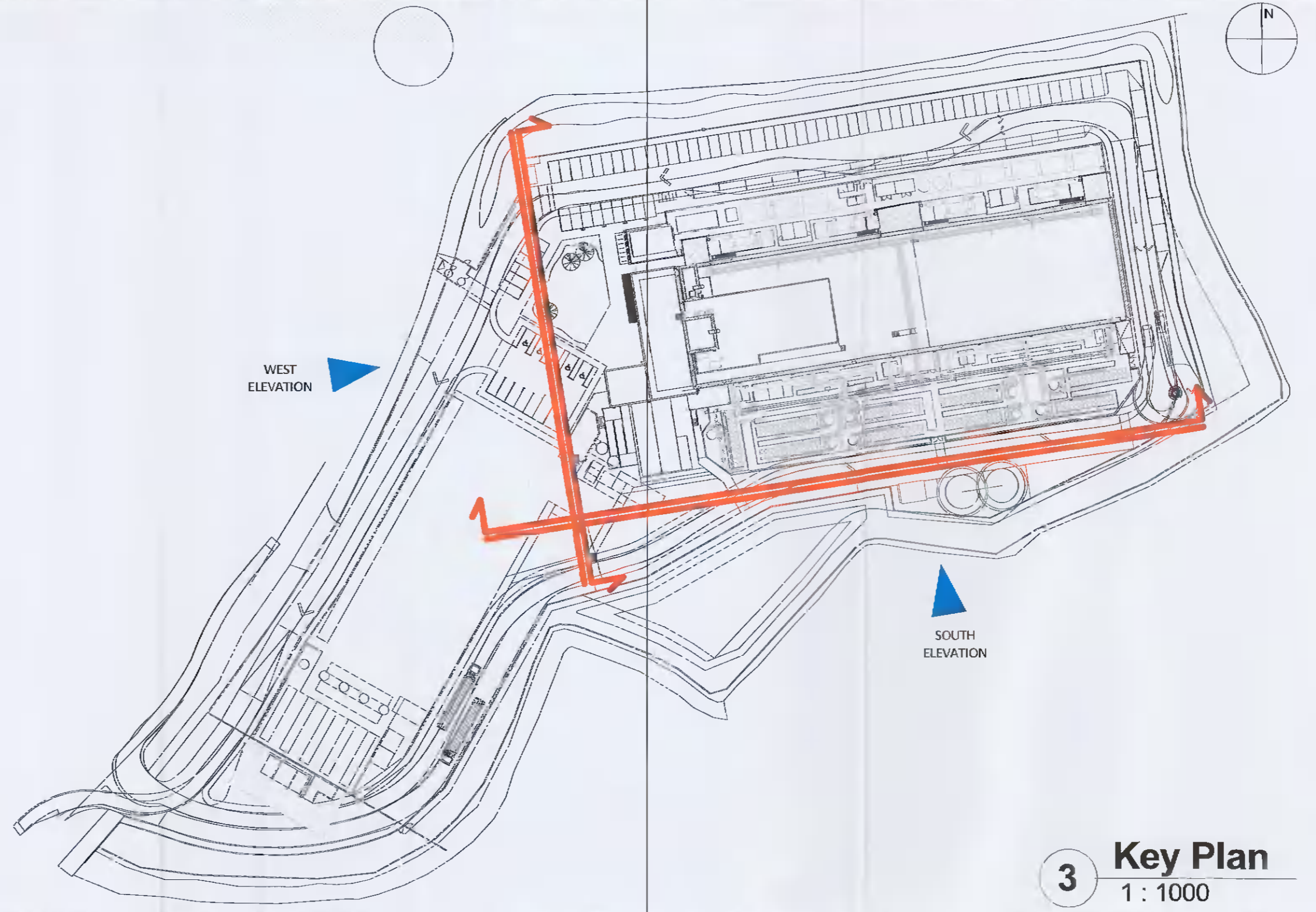
25m - Noted height achieved by other planning applications in Profile Park area - acceptable height for roof services



2 Proposed West Elevation  
1:200

MATERIAL LEGEND:

- |   |   |
|---|---|
| 1 COMPOSITE CLADDING PANEL INSTALLED HORIZONTALLY, FLAT PANEL, COLOUR DARK GREY - RAL 7016  | 10 STAINLESS STEEL WOVEN METAL MESH CLADDING ON STEEL STRUCTURE PAINTED RED STAIR STRINGERS ALSO PAINTED IN RED COLOUR  |
| 2 COMPOSITE CLADDING PANEL INSTALLED HORIZONTALLY, FLAT PANEL, COLOUR DARK GREY - RAL 7016 WITH 150MM FIN'S IN MATCHING COLOUR. FIN'S INSTALLED AT PANELS VERTICAL JOINTS AT 2.5M CENTRES | 11 COMPOSITE CLADDING PANEL, FLAT, COLOUR LIGHT GREY - RAL 7035 ALUMINIUM FIN'S PROTRUDING 150MM IN MATCHING COLOUR, WITH INDIVIDUAL FIN'S IN RED COLOUR. FIN'S INSTALLED AT RANDOM PATTERN |
| 3 ALUMINIUM LOUVRE PANEL SYSTEM - DARK GREY - RAL 7016  | 12 PRESSED METAL CAPPING POWDERCOATED TO COLOUR TO MATCH CLADDING BELOW   |
| 4 ALUMINIUM LOUVRE SCREEN - COLOUR DARK GREY - RAL 7016   | 13 STEEL DOOR POWDERCOATED IN RED COLOUR - RAL 7035   |
| 5 GLAZED CURTAIN WALL SYSTEM WITH FIN'S PROTRUDING 150mm FROM EACH MULLION. FRAME COLOUR TO MATCH FIBRE CEMENT CLADDING (GRANITE)   | 14 INSULATED ROLLER SHUTTER, COLOUR RAL 7016  |
| 6 FIBER-CEMENT CLADDING PANELS WITH VERTICAL GROOVED TEXTURE COLOUR GRANITE   | 15 SCREENING WALL, COMPOSITE PANELS WITH MICRORIB PATTERN, INSTALLED VERTICALLY COLOUR LIGHT GREY - RAL 7035  |
| 7 COMPOSITE CLADDING PANEL INSTALLED VERTICALLY, COLOUR LIGHT GREY - RAL 7035   | 16 FIBER-CEMENT CLADDING PANELS, FLAT PANELS COLOUR ANTHRACITE GREY   |
| 8 ACOUSTIC SCREENING WALL, INSTALLED VERTICALLY COLOUR LIGHT GREY - RAL 7035  | 17 ALUMINIUM CLADDING TO CANOPY, POWERCOATED TO RAL 7016, UNDERSIDE IN RED COLOUR   |
| 9 FIBER-CEMENT CLADDING PANELS WITH VERTICAL GROOVED TEXTURE COLOUR ANTHRACITE GREY   | 18 SINGLE PLY ROOF MEMBRANE IN WHITE COLOUR   |



3 Key Plan  
1:1000

REV	DATE	DESCRIPTION	DWN	CHK	APP

Key:

Project:

DB8 - Equinix

Drawing Title:

Proposed Elevations - Sheet 2

Drawing Number:

DB081-RKD-ZZ-ZZ-DR-A-ZZZZ- 2201

Scale: Paper Size: Purpose: Revision:

1:200cated A1



59 Northumberland Rd  
Ballsbridge, Dublin 4  
D04 WP69, Ireland

+353 1 668 1055  
mail@rkd.ie  
rkd.ie