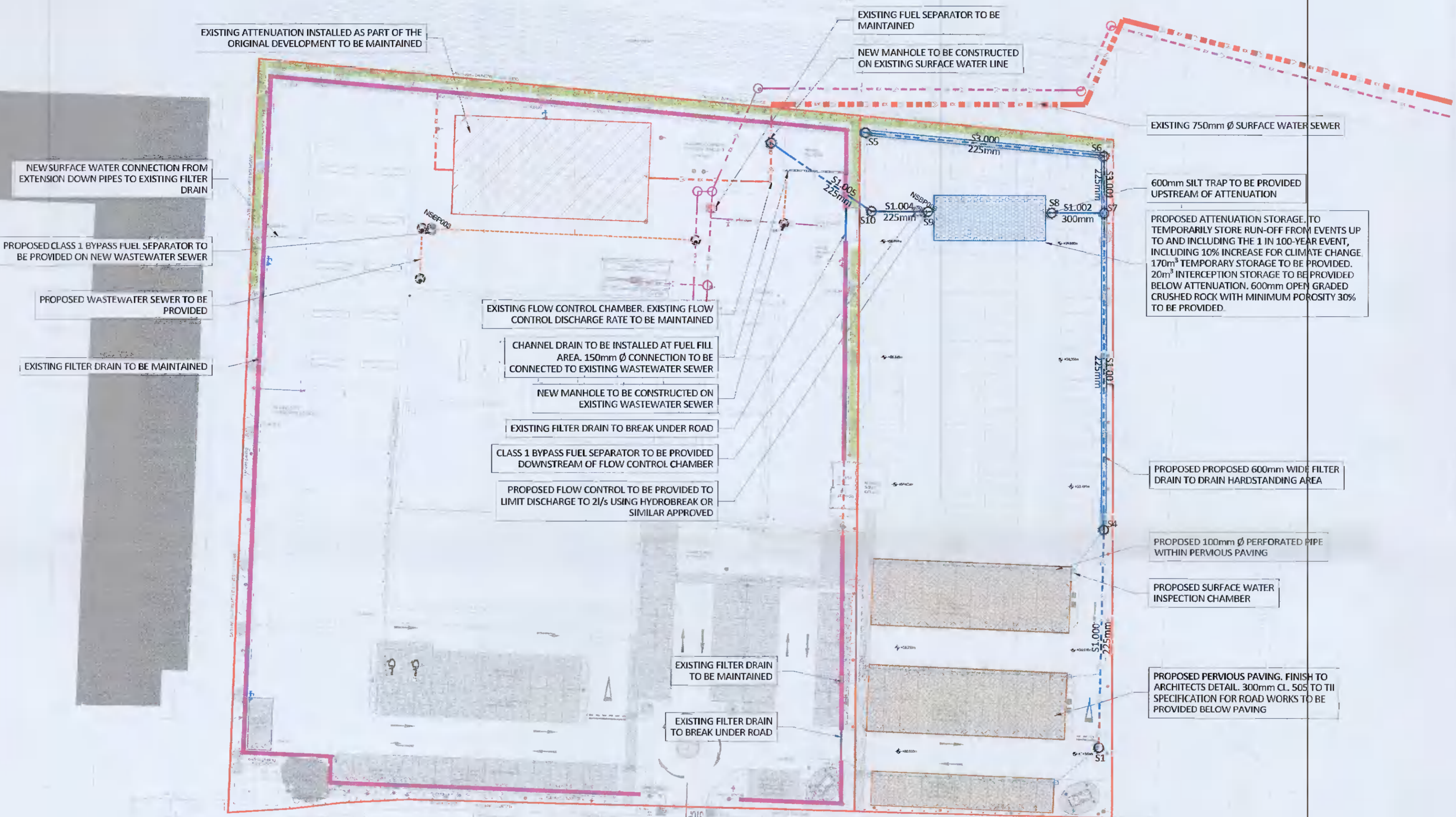


Surface Water Network Design Tables						
USMH	USCL (m)	Pipe Number	USIL (m)	Dia (mm)	Slope (1:K)	DSL (m)
S1	59.866	S1.000	58.441	225	75.1	58.002
S4	59.500	S1.001	58.002	225	75.0	57.366
S5	58.600	S3.000	57.250	225	100.0	56.886
S6	59.000	S3.001	56.886	225	29.9	56.599
S7	58.800	S1.002	56.524	300	170.2	56.477
S8	58.886	S1.003	56.477	300	244.1	56.400
S9	59.000	S1.004	56.400	225	170.3	56.350
S10	59.010	S1.005	56.350	225	170.6	56.242

- NOTES**
- ALL NOTED LEVELS ARE TO ORDNANCE DATUM, MAIN HEAD.
 - REFER TO ARCHITECT'S LAYOUT FOR ALL SET-OUT INFORMATION.
 - REFER TO ARCHITECT / LANDSCAPE ARCHITECT'S DESIGN DRAWINGS FOR DETAILS OF PROPOSED SURFACE FINISHES AND LANDSCAPING.
 - ALL SURFACE WATER DRAINAGE IS TO BE INSTALLED IN ACCORDANCE WITH THE GREATER DUBLIN REGION CODE OF PRACTICE FOR DRAINAGE WORKS, THE BUILDING REGULATIONS PART H AND THE SITE DEVELOPMENT SPECIFICATION.
 - ALL WASTEWATER DRAINAGE IS TO BE INSTALLED IN ACCORDANCE WITH THE IRISH WATER CODE OF PRACTICE FOR WASTEWATER INFRASTRUCTURE, THE BUILDING REGULATIONS PART H AND THE SITE DEVELOPMENT SPECIFICATION.
 - ALL DRAINAGE COVER LEVELS ARE TO BE COORDINATED WITH THE PROPOSED ROAD DESIGN LEVELS AND ARCHITECT DESIGN FINISH DETAILS.
 - ALL CONNECTIONS TO NEW DRAINAGE NETWORKS ARE TO BE MADE AT AN ANGLE OF 90° OR IN THE DIRECTION OF FLOW.
 - THE CONTRACTOR IS TO VERIFY INVERT LEVEL AT PROPOSED CONNECTION TO EXISTING SEWERS, PRIOR TO ANY OTHER WORKS BEING CARRIED OUT, AND MAKE ANY DISCREPANCIES KNOWN TO THE ENGINEER.
 - THE CONTRACTOR IS RESPONSIBLE FOR CONFIRMATION OF PRESENCE ALL EXISTING UTILITIES, IF ANY, ALONG ROUTE OF PROPOSED DRAINAGE NETWORKS - BY INTRUSIVE INVESTIGATION OR SIMILAR APPROVED METHODS.
 - EXISTING PUBLIC SEWER TO BE JET CLEANED AND CCTV SURVEYED PRIOR TO, AND AFTER PROPOSED CONNECTIONS FROM NEW NETWORK.
 - ALL NEW DRAINAGE INFRASTRUCTURE TO BE JET CLEANED AND CCTV SURVEYED, WITH ANY NOTED DEFECTS REMEDIATED, ON COMPLETION OF WORKS, TO THE SATISFACTION OF THE LOCAL AUTHORITY.
 - REFER TO ARCHITECT'S DRAWINGS FOR DOWNPIPE LOCATIONS.
 - ALL COVER LEVELS ARE TO BE COORDINATED WITH ROAD DESIGN LEVELS AND LANDSCAPE ARCHITECT'S PROPOSED FINISH LEVELS.

LEGEND:

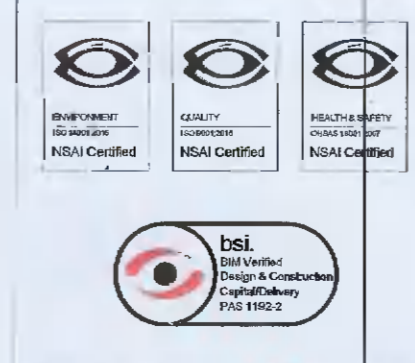
- PROPOSED SURFACE WATER NETWORK
- EXISTING SURFACE WATER NETWORK
- EXISTING FILTER DRAIN
- PROPOSED FILTER DRAIN
- PERFORATED PIPE WITHIN PERVIOUS PAVING
- PERFORATED WASTEWATER CONNECTION
- EXISTING WASTEWATER SEWER
- PROPOSED PERVIOUS PAVING
- PROPOSED ATTENUATION
- EXISTING ATTENUATION
- PROPOSED SPOT LEVEL



ORDNANCE SURVEY OF IRELAND LICENCE NO. EN0000821 © GOVERNMENT OF IRELAND

- FOR SETTING OUT REFER TO ARCHITECT'S DRAWINGS.
- THIS DRAWING TO BE READ IN CONJUNCTION WITH ALL OTHER ARCHITECTURAL AND ENGINEERING DRAWINGS AND ALL OTHER RELEVANT DRAWINGS AND SPECIFICATIONS.
- DO NOT SCALE THIS DRAWING. USE FIGURED DIMENSIONS ONLY.
- NO PART OF THIS DOCUMENT MAY BE REPRODUCED OR TRANSMITTED IN ANY FORM OR STORED IN ANY RETRIEVAL SYSTEM OF ANY NATURE WITHOUT THE WRITTEN PERMISSION OF O'CONNOR SUTTON CRONIN AS COPYRIGHT HOLDER EXCEPT AS AGREED FOR USE ON THE PROJECT FOR WHICH THE DOCUMENT WAS ORIGINALLY ISSUED.

Rev No.	Date	Revision Note	Drn by	Chkd by	Rev No.	Date	Revision Note	Drn by	Chkd by
P01	23.04.21	SUITABLE FOR INFORMATION	DOM	BM					
P02	10.06.21	STAGE COMPLETE - SUITABLE FOR STAGE APPROVAL	DOM	BM					
P03	24.06.21	STAGE COMPLETE - SUITABLE FOR PLANNING	DOM	BM					
P05	28.06.21	REVISED SITE LAYOUT	DOM	BM					



Head Office,
9 Prussia Street,
Dublin 7,
D07 K157

TEL +353 (0)1 8681000

e: contactus@ccsc.ie
w: www.ccsc.ie

Dublin London Belfast Galway Cork Birmingham



Client: TOYOTA IRELAND
Project: TOYOTA LIFFEY VALLEY

Title: PROPOSED DRAINAGE DESIGN LAYOUT

Code Originator: Zone Level Type Role | Number | Status | Revision
T260 · OCSC · XX · XX · DR · C · 0500 S4 P05

Date: APRIL '21 Scale: 1:500 @ A1 Drn by: DOM Chkd by: BM Aprvd by: BM

PLANNING DRAWING.
NOT FOR CONSTRUCTION.
ALL LEVELS GIVEN ARE
RELATIVE TO ORDNANCE DATUM.
THIS DRAWING HAS BEEN ISSUED FOR INFORMATION
PURPOSES ONLY AND MUST NOT BE USED
FOR CONSTRUCTION UNDER ANY CIRCUMSTANCES