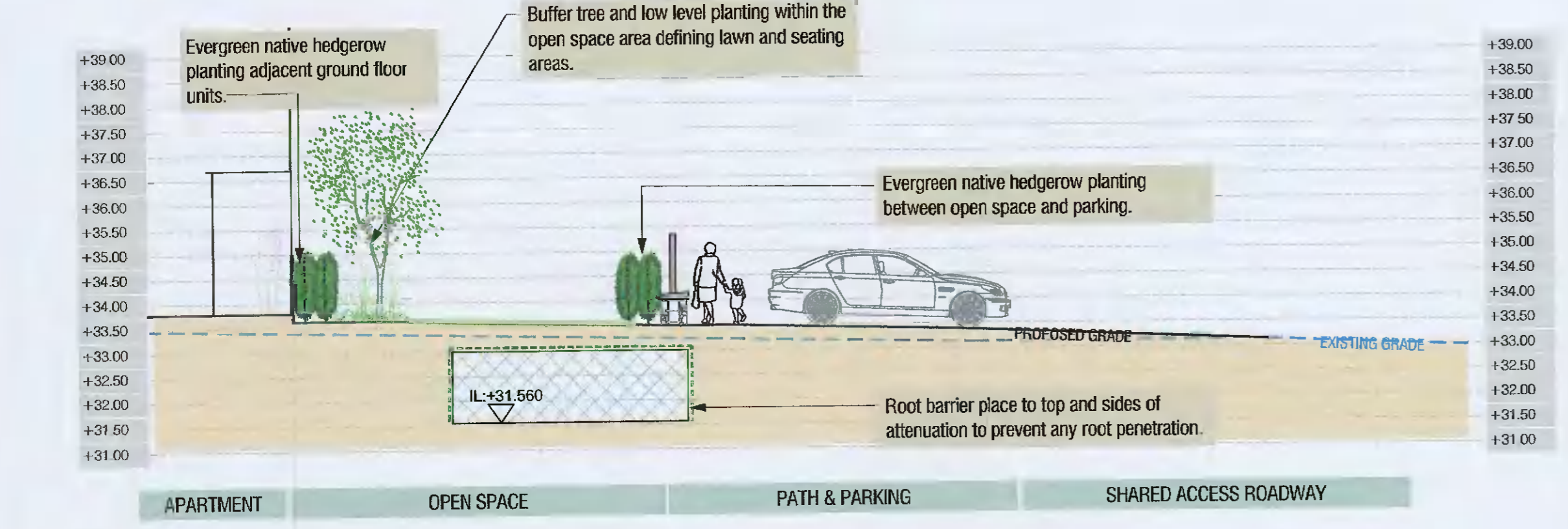




Key to Landscape Treatments	
	PROPOSED TREE PLANTING: <i>Crataegus monogyna</i> 'Stricta', 20-25cm girth, rh. <i>Forbesia</i> <i>Horsetail</i> <i>Silica</i>
	PROPOSED TREE PLANTING: <i>Betula utilis</i> <i>Jacquemontii</i> , 2.5-3.0m tall, multistem, rh. <i>Mulcibum</i> <i>Himalayan</i> <i>Birch</i>
	PROPOSED TREE PLANTING: <i>Cornus officinalis</i> , 120-150cm tall, rh. <i>Asparagus</i> <i>Green</i> <i>Spargan</i>
	PROPOSED TREE PLANTING: <i>Malus sylvestris</i> , 14-16cm girth, rh. <i>Crab</i> <i>Apple</i>
Soft Landscape Treatments	
	PROPOSED NATIVE HEDGEROW PLANTING: <i>Ficus</i> <i>bucalya</i> , 100-125cm, tr at 400mm centres
	PROPOSED SHRUB PLANTING: Comprising the following pre-planting species
	<i>Silpa</i> <i>foveolata</i> , 2l at 600mm centres
	<i>Arctostaphylos</i> <i>Splendens</i> , 2l at 600mm centres
	<i>Boragin</i> <i>cordifolia</i> , 2l at 600mm centres
	<i>Oslopernum</i> <i>Carriaglen</i> <i>Ray</i> , 2l at 600mm centres
	<i>Saxifraga</i> <i>White</i> <i>Flair</i> , 2l at 600mm centres
	<i>Agapanthus</i> <i>Rain</i> <i>Umbrella</i> , 2l at 600mm centres
	<i>Lavandula</i> <i>angustifolia</i> <i>Verd</i> , 2l at 600mm centres
Graphic representation of the above indicates location and not quantities. All blocks of planting species to be proportionately spaced through the area to be planted.	
	PROPOSED GRASS: CLOVER RICH LAWN MIX: 20% Perennial Ryegrass <i>Arctical</i> 20% Perennial Ryegrass <i>Stable</i> 20% Strong Creeping Red Fescue 10% Italian Ryegrass 10% Slender Creeping Red Fescue 5% Trifolium pratense at 55-50g/square metre.
Hard Landscape Treatments	
	EXISTING SURFACE TREATMENT To be retained
	PROPOSED SURFACE TREATMENT 1 Permeable paving at 80mm depth
	PROPOSED SURFACE TREATMENT 2 Natural Stone Flag Paving - 30mm depth
	PROPOSED SURFACE TREATMENT 3 Concrete Block Paving - 60mm depth
	PROPOSED SURFACE TREATMENT 4 Natural Stone Flag Paving - 30mm depth
	PROPOSED SURFACE TREATMENT 5 Tarmac
Hard Landscape Features	
	PROPOSED SITE FURNITURE 1 Prest polished concrete seat
	CONSTRUCTED TREE PIT See detail below
Boundary Treatments	
	EXISTING BOUNDARY TREATMENT Masonry wall to be retained.
	PROPOSED BOUNDARY TREATMENT 1 1200mm high bow top railing on 600mm high stone wall.

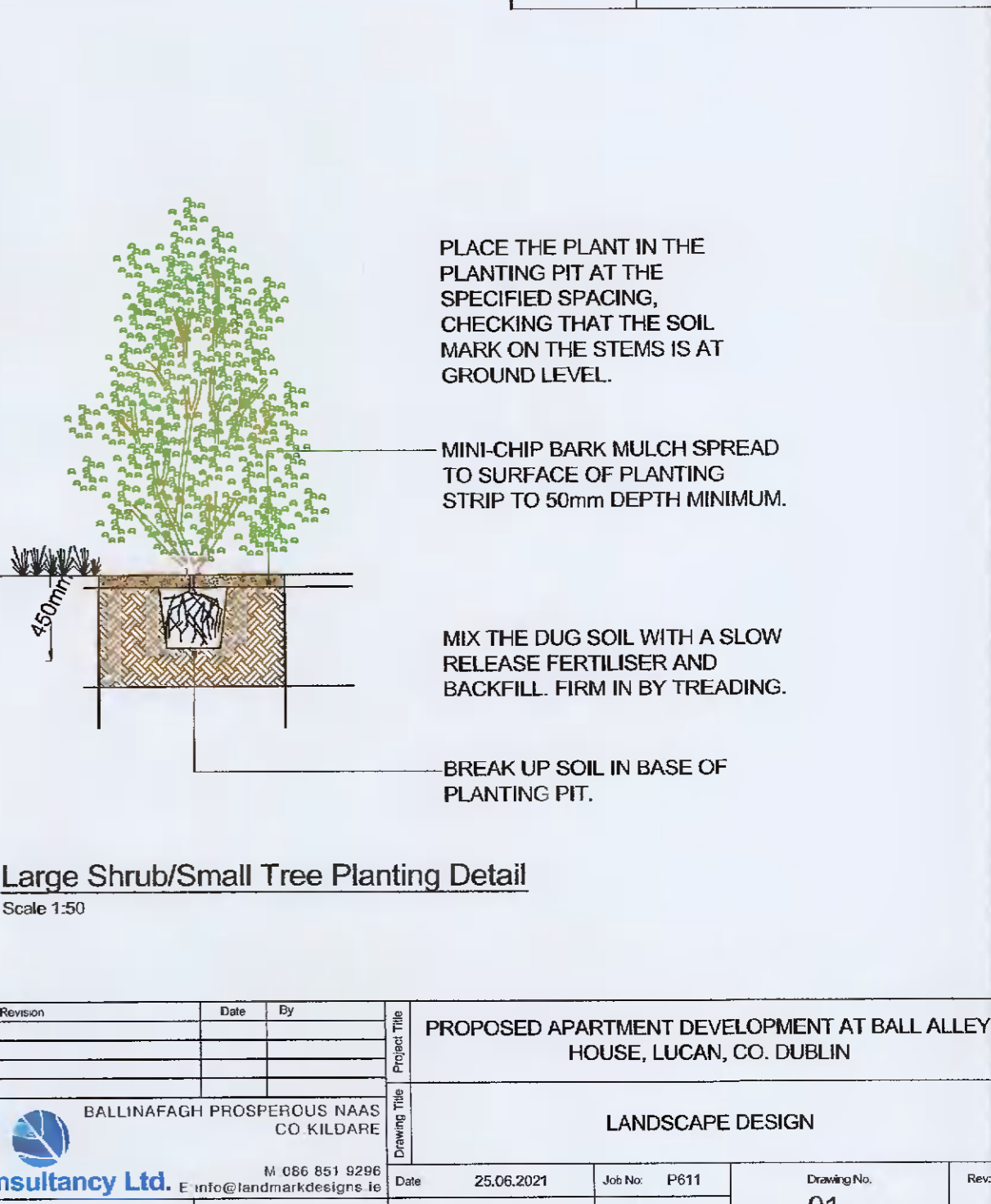
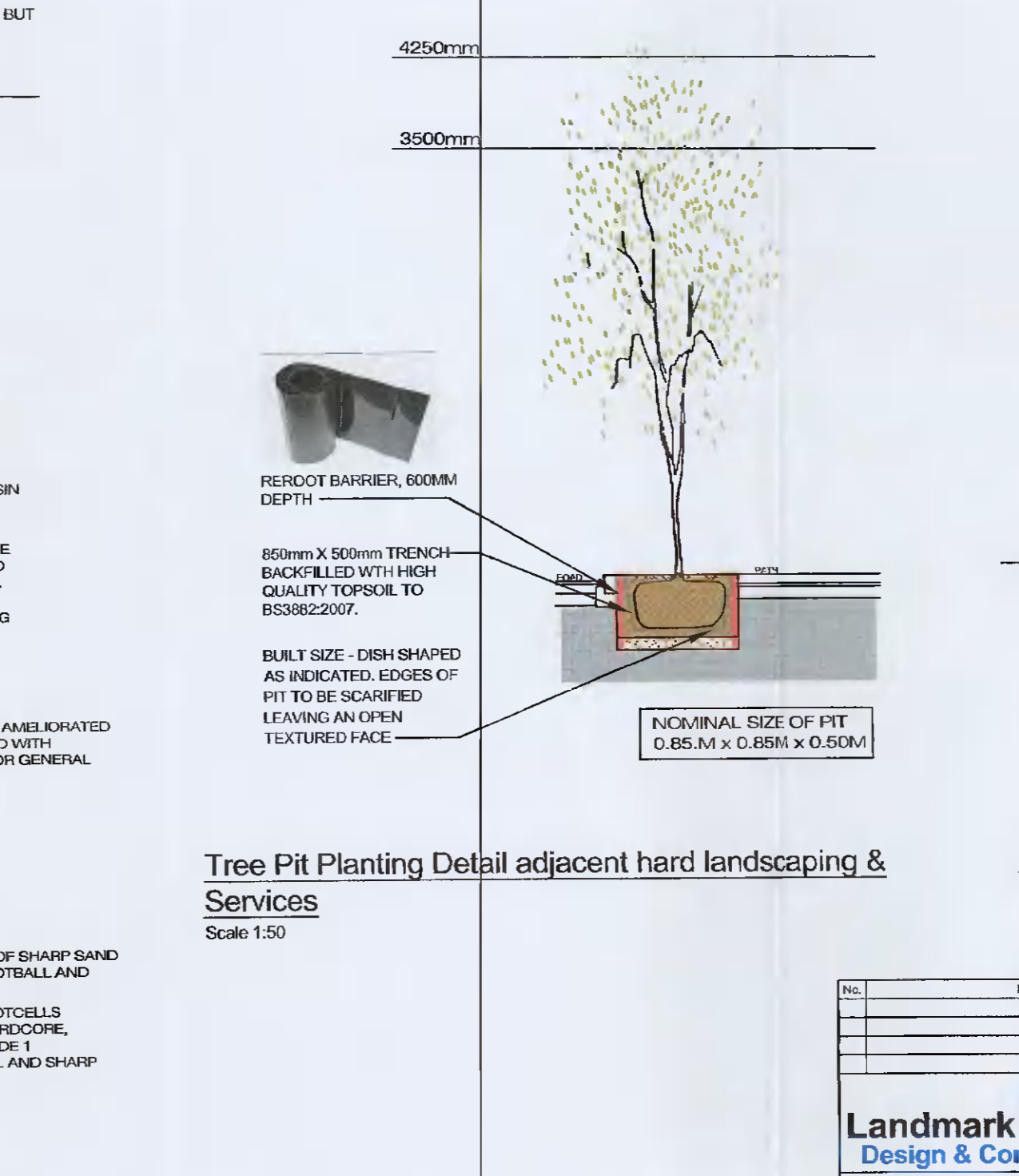
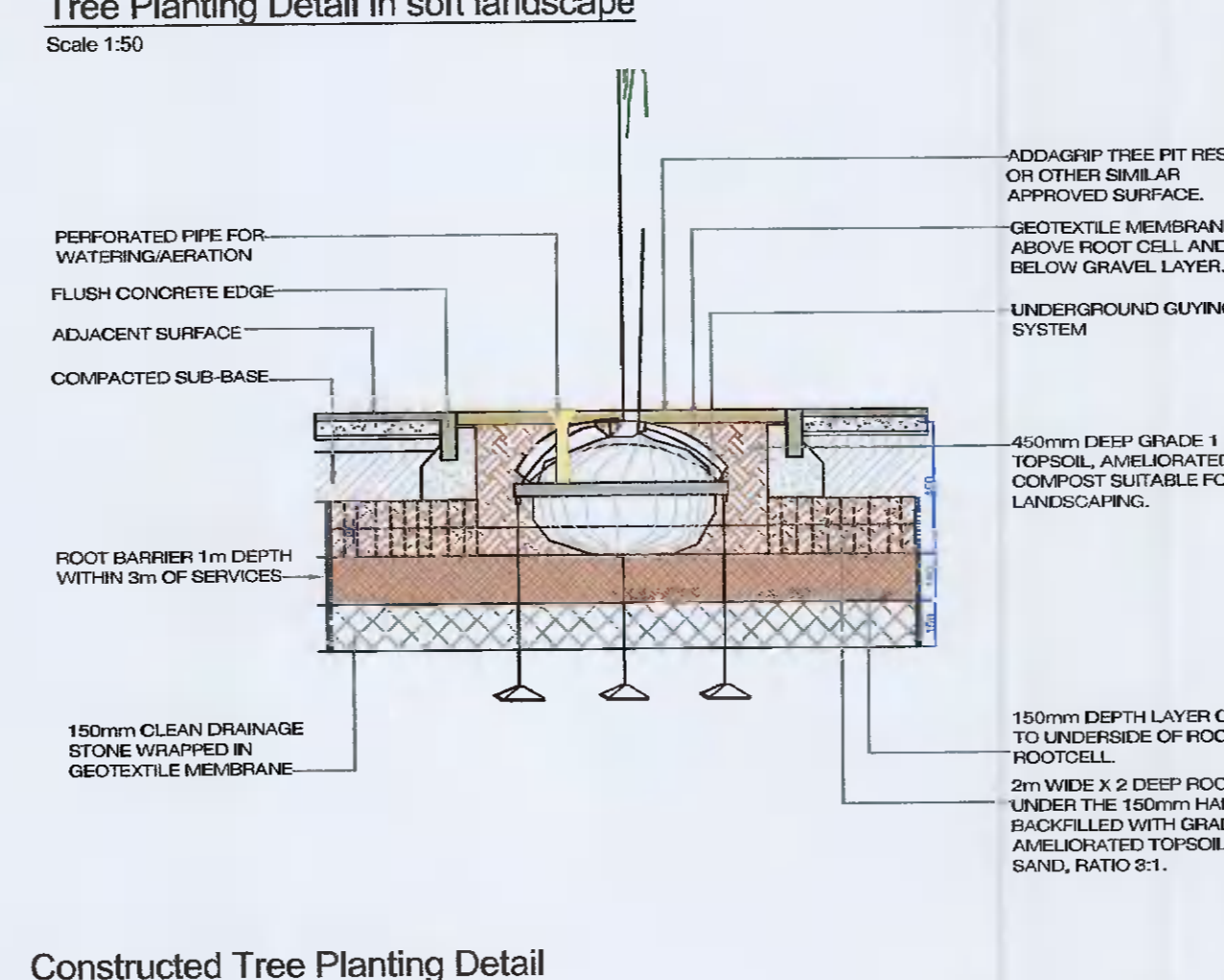
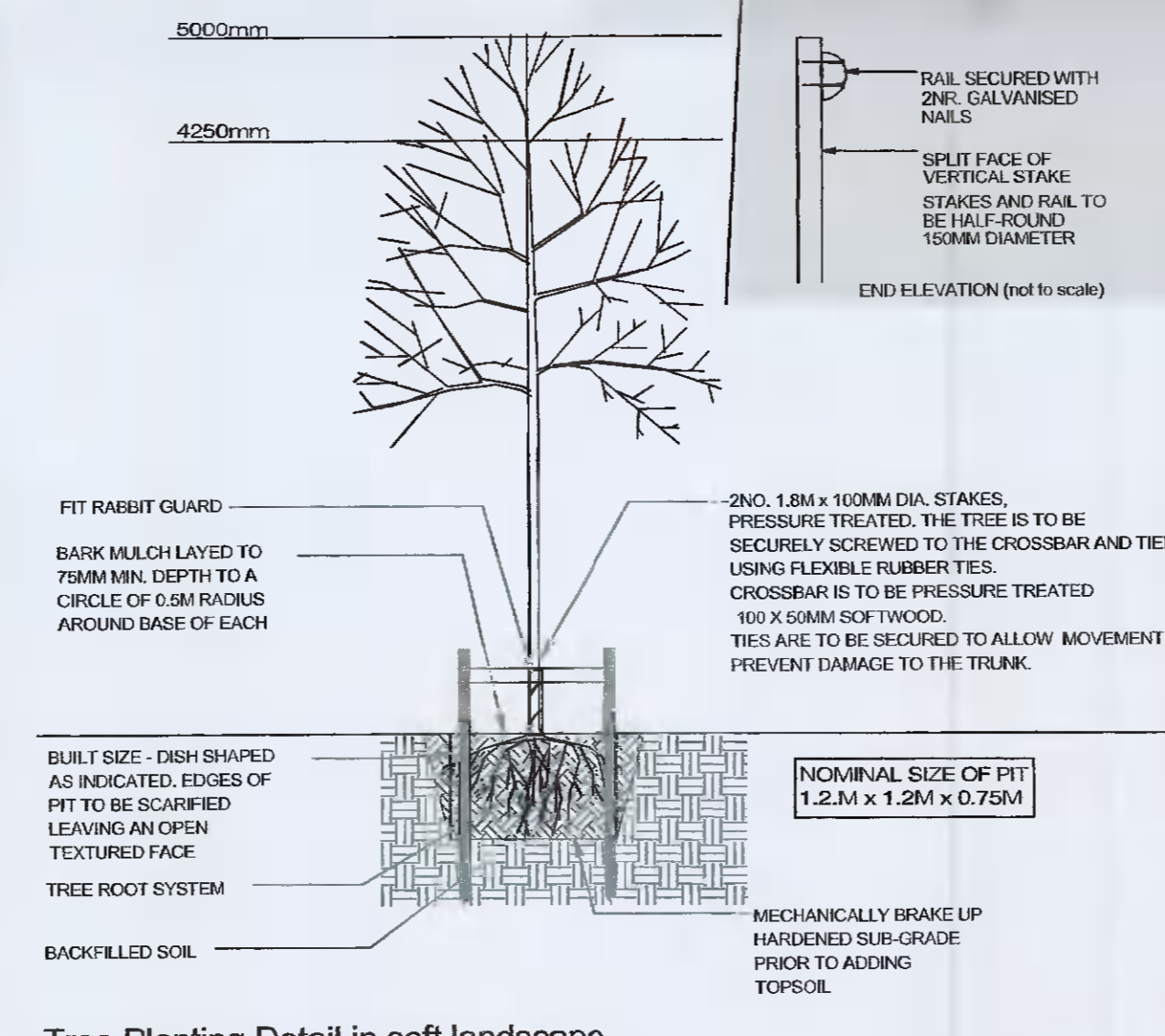
Landscape Plan - Ground Floor

Scale 1:150



Section A

Scale 1:100



No.	Revision	Date	By

BALLINAFAGH PROSPEROUS NAAS CO KILDARE
Landmark Design & Consultancy Ltd.
 M: 086 851 8296 Date: 25.06.2021 Job No: P511 Drawing No: 01
 E: info@landmarkdesign.ie
 Designed: GWEN TIERNEY Landscape Architect. Status: PLANNING Scale: 1:150 Drawn: GT

PROPOSED APARTMENT DEVELOPMENT AT BALL ALLEY HOUSE, LUCAN, CO. DUBLIN
 LANDSCAPE DESIGN