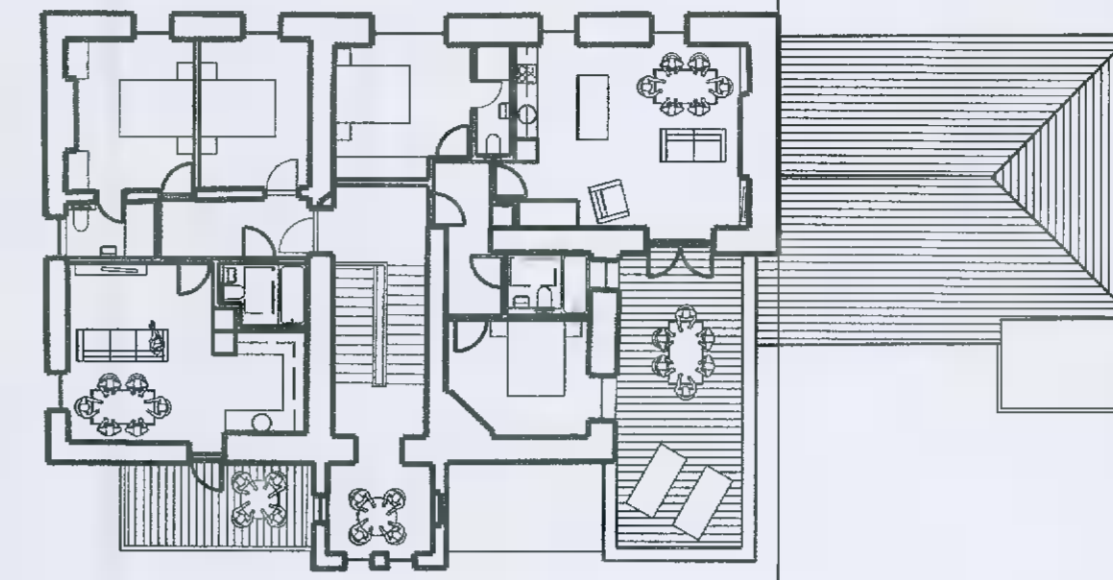


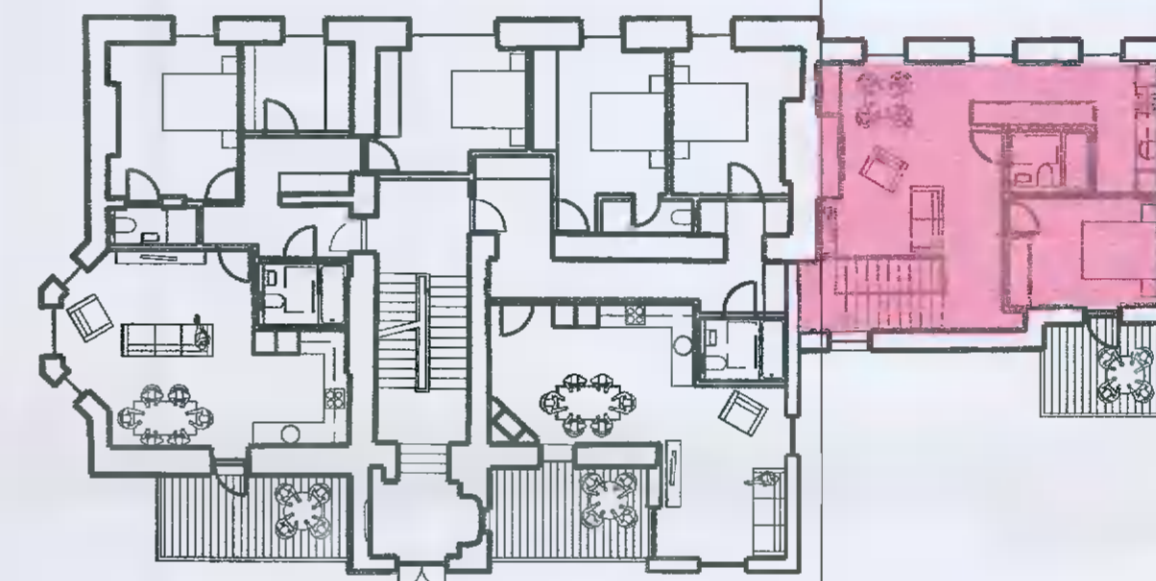


SITE PLAN 1:500

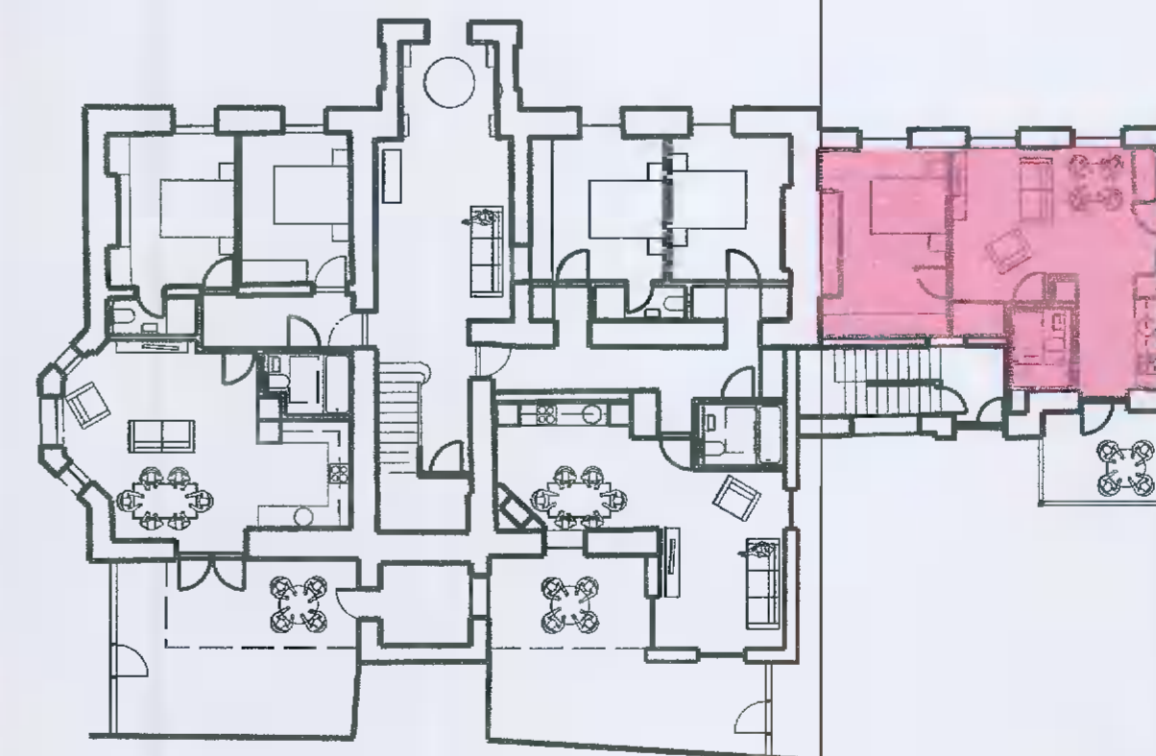
PROPOSED PART V ALLOCATION
 APT.S 7+8 BALLYROAN HOUSE (2 No. 1 BED APARTMENTS)



BALLYROAN HOUSE - SECOND FLOOR PLAN - 1:200



BALLYROAN HOUSE - FIRST FLOOR PLAN - 1:200



BALLYROAN HOUSE - GROUND FLOOR PLAN - 1:200

PART V ALLOCATION CALCULTAION - 24UNITS X 10% = 2.4 UNITS

PROPOSED PART V ALLOCATION
 APARTMENT NO. 7 - 1B - 60m2

PROPOSED PART V ALLOCATION
 APARTMENT NO. 7 - 1B - 48m2

