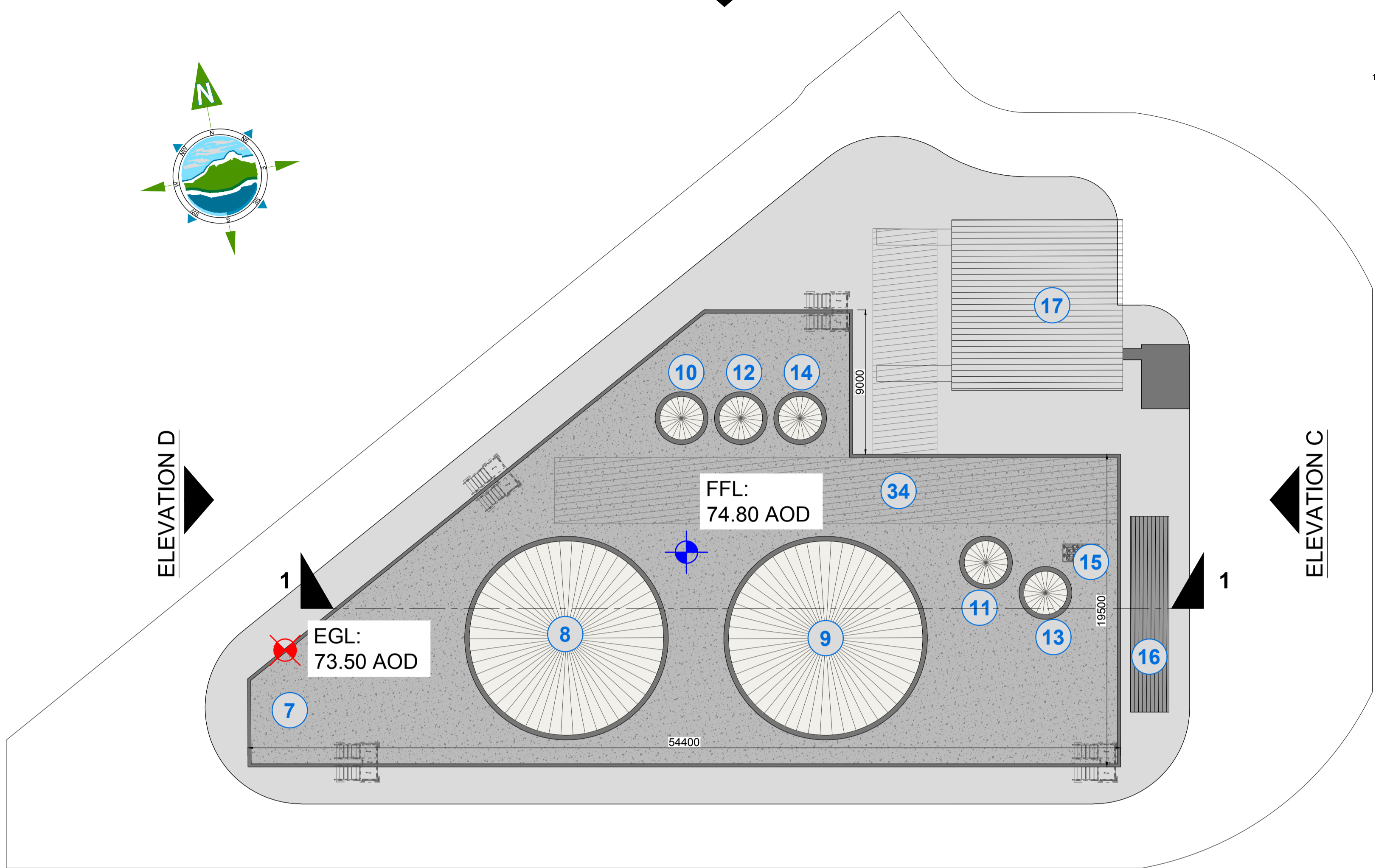
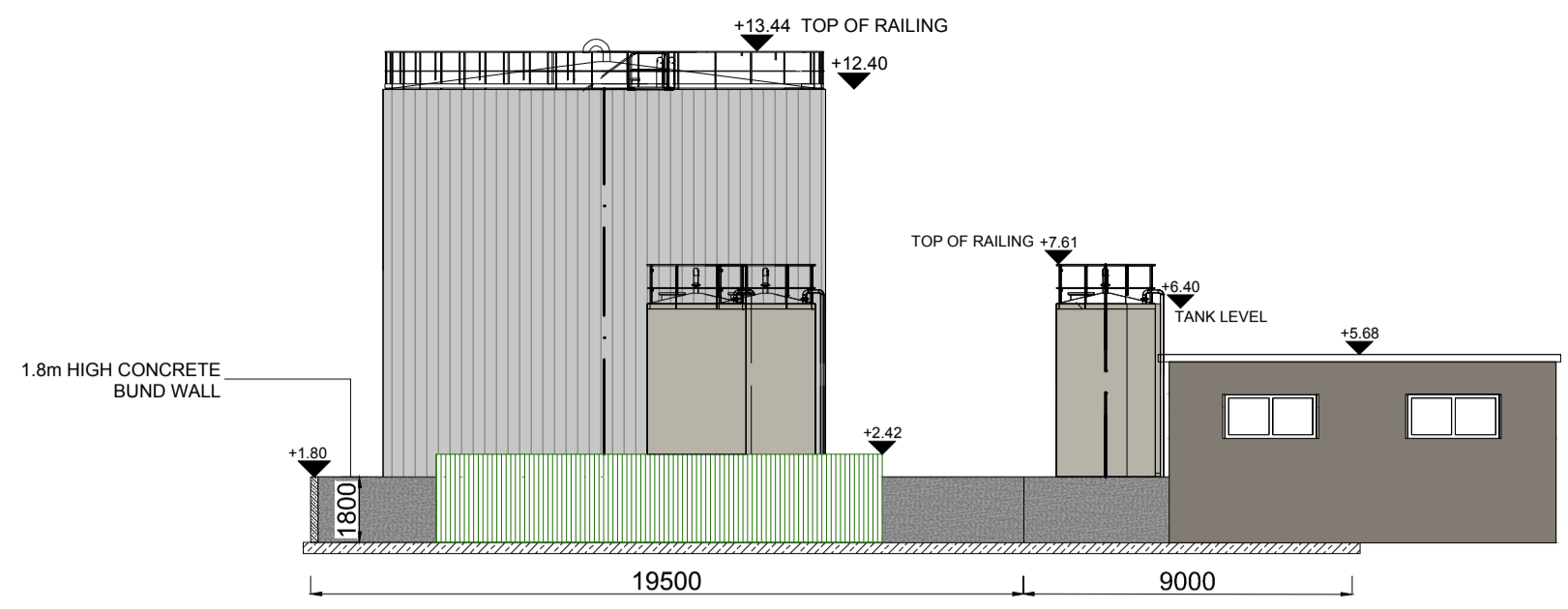




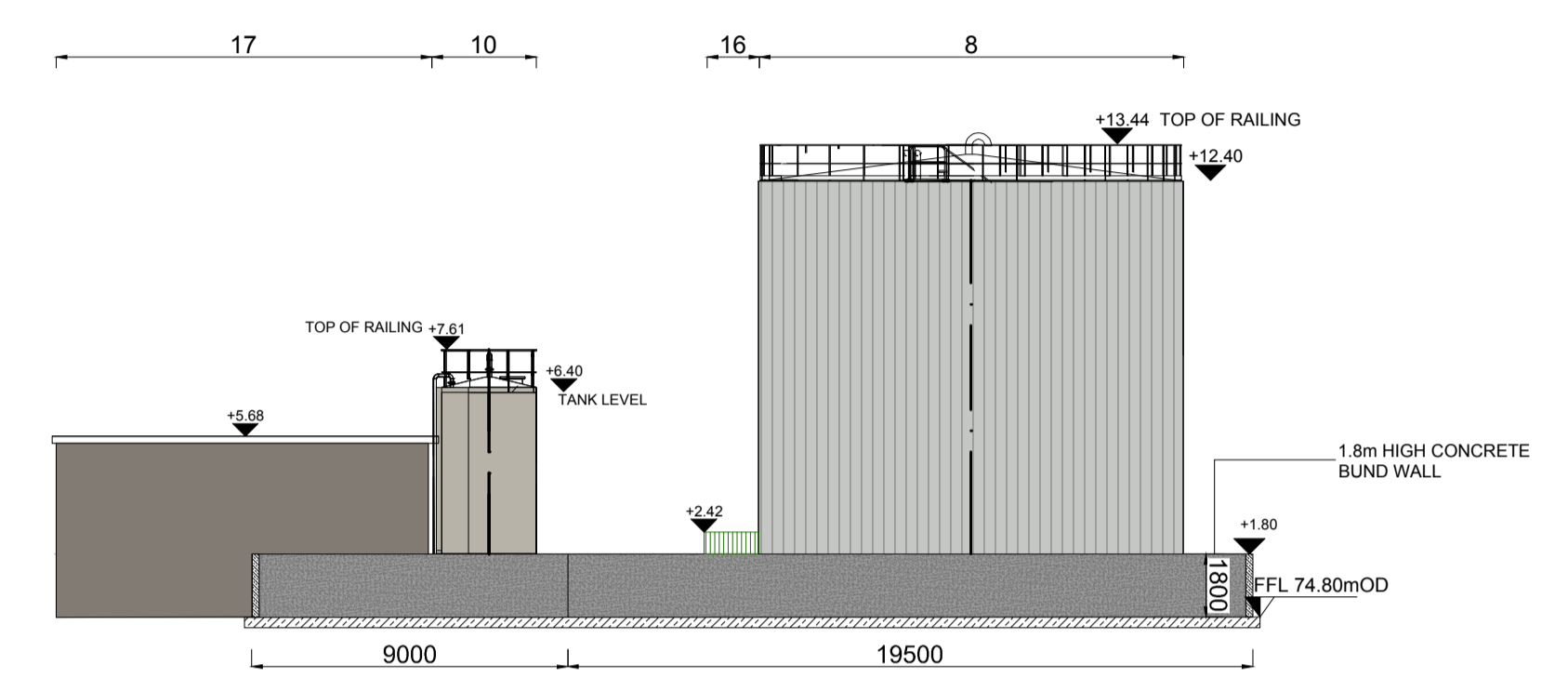
ELEVATION B



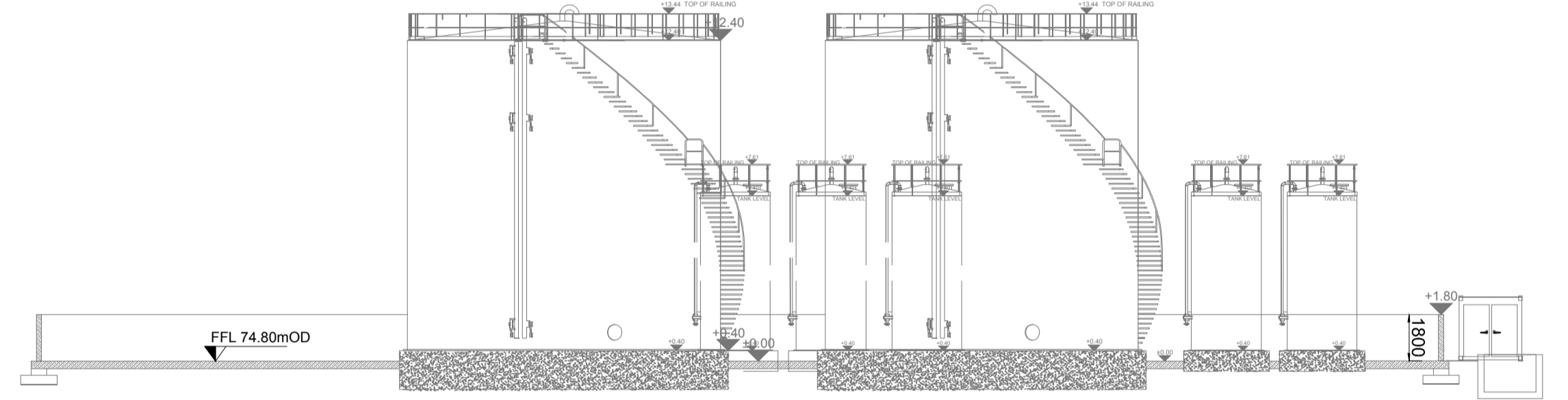
PLAN



ELEVATION C



ELEVATION D

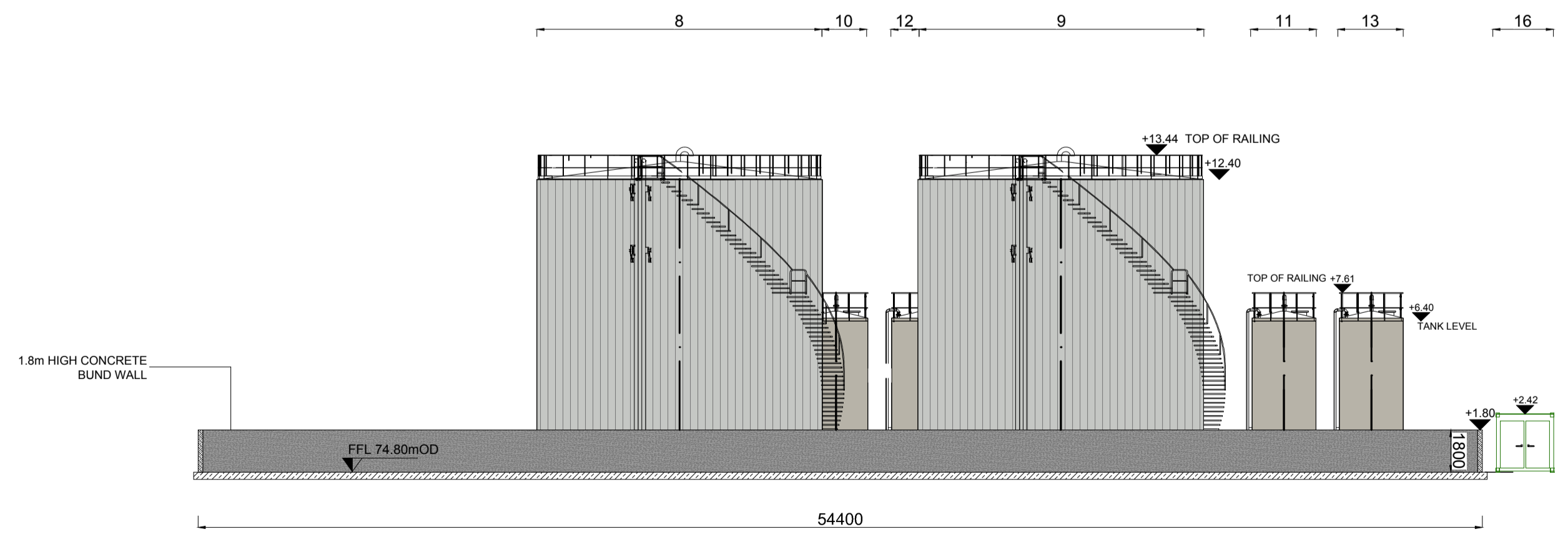


SECTION 1-1

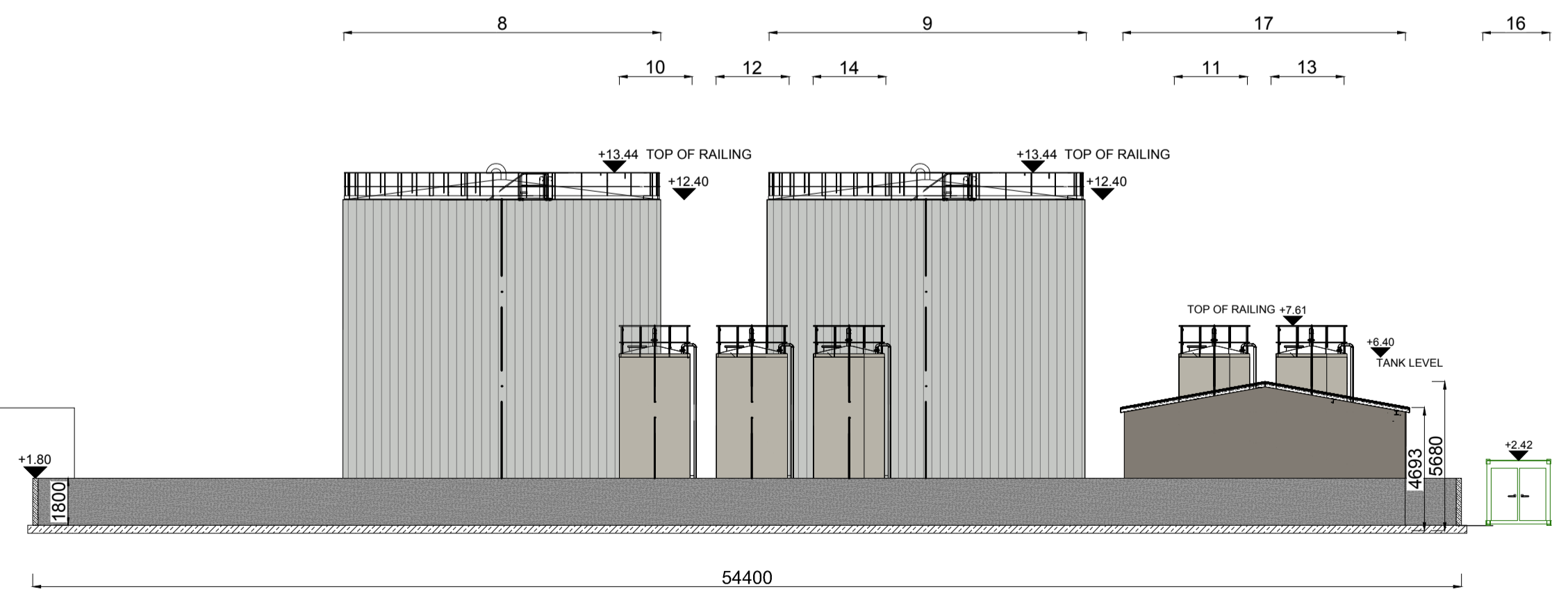
BUILDING & PLANT ID KEY		
Item ID	Item Name	
7	Tank Farm Bund	
8	Diesel Oil Storage Tank	- 1,250m <sup>3</sup>
9	Diesel Oil Storage Tank	- 1,250m <sup>3</sup>
10	Pilot Oil Storage Tank	- 26m <sup>3</sup>
11	Urea Storage Tank	- 26m <sup>3</sup>
12	Lube Oil Storage Tank	- 26m <sup>3</sup>
13	Lube Oil Maintenance Tank	- 26m <sup>3</sup>
14	Effluent Collecting Tank	- 26m <sup>3</sup>
15	Sludge Discharge Pump Module	
16	Urea Container	
17	Tank Farm Building	
18	Fire Water Tank	
19	Fire Pump Station	
20	Water Treatment Unit Shelter	
21	Treated Water Tank	
22	Gas Pressure Reduction Skid	
23	Heater Withdrawal Area	

As agreed with South Dublin County Council in the pre-application consultation meeting the final finishes, including cladding materials and colour codes, will be agreed with the Council post planning through planning condition. Greener Ideas Limited will ensure only Council approved finishes are applied on site.

ELEVATION A



ELEVATION A



ELEVATION B

Rev	Date	Description	By	Chkd.
A	18.06.21	PLANNING ISSUE	MN	MMcC

Client:

Project: **PROFILE PARK POWER PLANT**

Title: **TANK FARM BUND PLAN, ELEVATIONS & SECTION**

Scale @ A1: 1:200

Prepared by: M. Nolan | Checked: M. McCarthy | Date: June 2021

Project Director: S. Tinnelly

Drawing Status: Planning

**TOBIN**  
CONSULTING ENGINEERS

Block 10-4, Blanchardstown Corporate Park,  
Dublin 15, Ireland.  
tel: +353-(0)1-8030406  
fax: +353-(0)1-8030409  
e-mail: dublin@tobin.ie  
www.tobin.ie

Drawing No.: 11069-2046

Revision: **A**