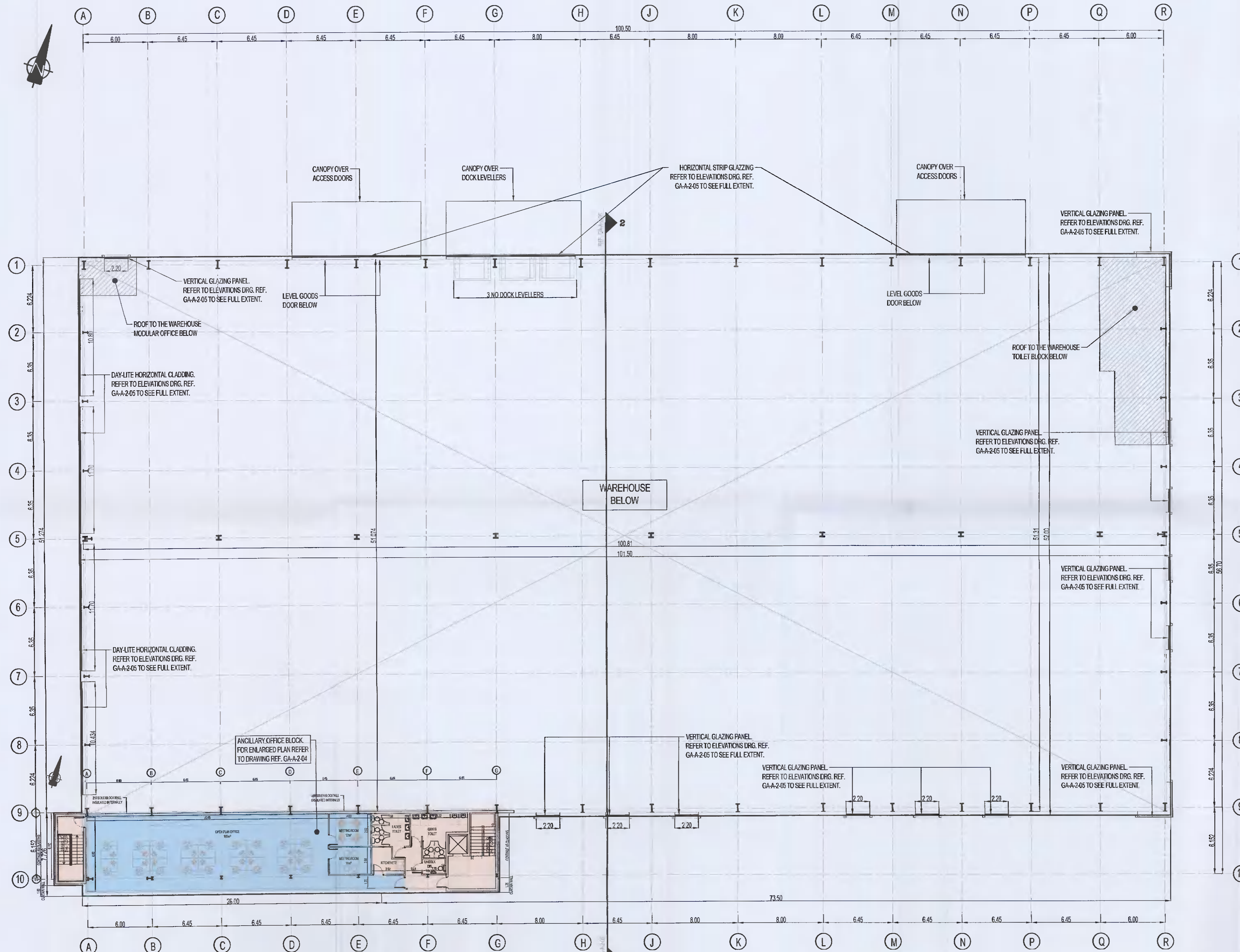


- NOTES:**
- THIS DRAWING IS TO BE READ IN CONJUNCTION WITH ALL OTHER RELEVANT DRAWINGS & SPECIFICATIONS.
 - DO NOT SCALE, USE FIGURED DIMENSIONS ONLY.



UNIT 2 - SECOND FLOOR PLAN
SCALE 1:200

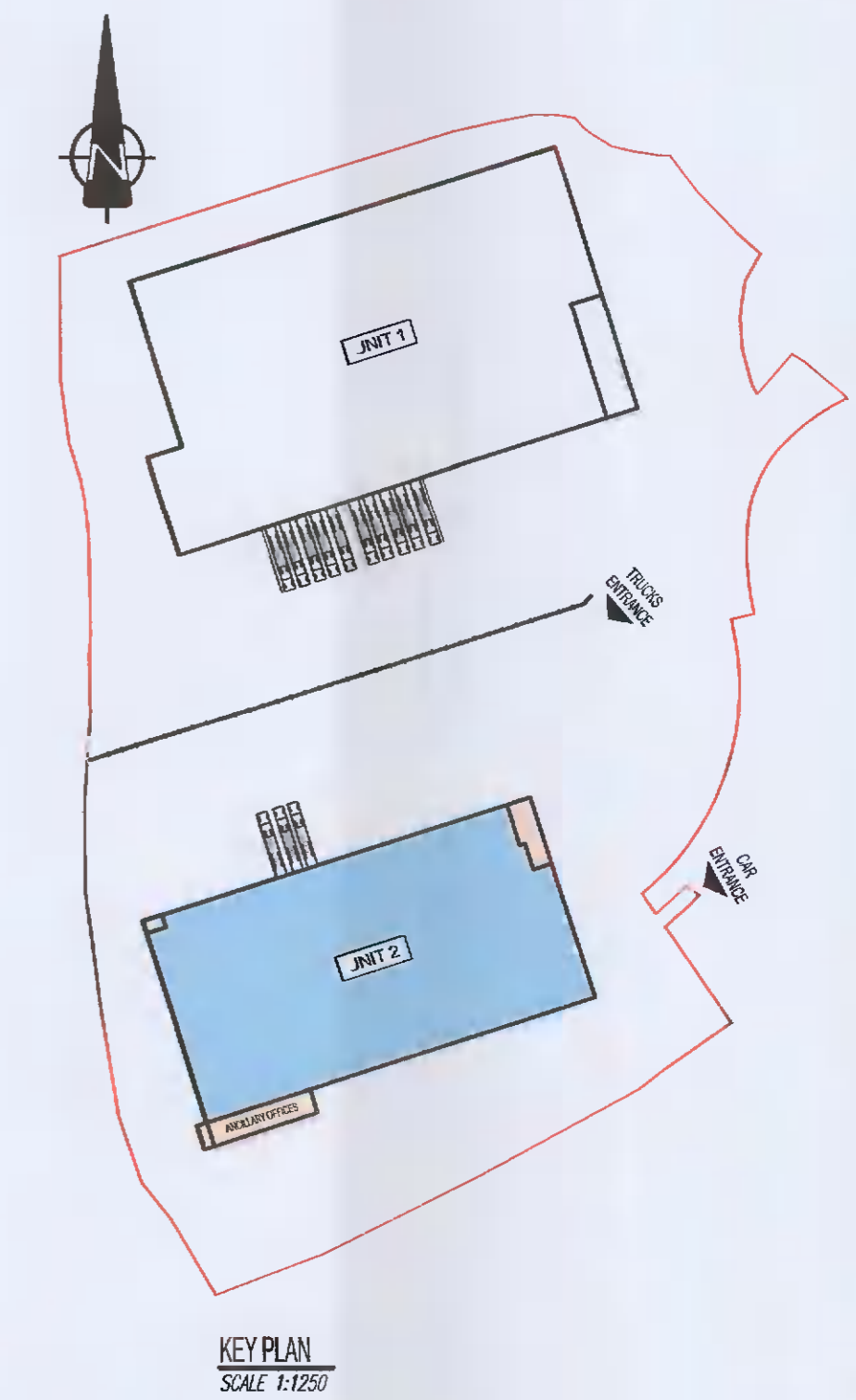


TABLE OF GROSS INTERNAL FLOOR AREAS & USES:

UNIT 2	OFFICE	STAFF FACILITIES	WAREHOUSE	TOTAL PROP.
GROUND FLOOR	140 1,507 Sq.ft	225 m ² 2,403 Sq.ft	5,031 m ² 54,151 Sq.ft	5,400 m ² 58,123 Sq.ft
1ST FLOOR	198 m ² 2,137 Sq.ft	97 m ² 1,044 Sq.ft	—	295 m ² 3,181 Sq.ft
2ND FLOOR	198 m ² 2,137 Sq.ft	97 m ² 1,044 Sq.ft	—	295 m ² 3,181 Sq.ft
TOTAL	536 m² 5,781 Sq.ft	423 m² 4,551 Sq.ft	5,031 m² 54,151 Sq.ft	5,990 m² 64,473 Sq.ft

PL7	31-05-2021	TK	PK	PK	ISSUED FOR PLANNING
Rev	Date	By	Chk	App	Revise

PLANNING

Job Title:
WAREHOUSE DEVELOPMENT AT BROWNSBARN, CITYWEST CAMPUS, DUBLIN 24

Drawing Title:
UNIT 2 SECOND FLOOR PLAN

Architect/Client:
Exeter Ireland Property IV B Limited

KAVANAGH BURKE
CONSULTING ENGINEERS

Tel. 01 - 450 0694 Unit G3, Calmount Pk.
 Fax. 01 - 426 4340 Ballymount,
 Email: pkavanagh@kavanaghburke.ie Dublin 12.

Drn	GSJ	Checked	SS	Approved	PK
Scale	1:200	Date	May 2021		
Job No.	D1678	Drawing No.	GA-A-2-03	Rev.	PL7