

**DATE:** 8 April 2021  
**DESIGNER:** J. Smyth  
**PROJECT No:** P20051  
**PROJECT NAME:** Griffeen Community College



## Outdoor Lighting Report

**PREPARED BY:** Jessica Smyth  
Electrical Project Engineer  
AxisEng  
e-mail: jsmyth@axiseng.ie

## Layout Report

### General Data

Dimensions in Metres Angles in Degrees

### Calculation Grids

ID	Grid Name	X	Y	X' Length	Y' Length	X' Spacing	Y' Spacing
1	School Road	7055.67	7591.34	122.59	45.12	0.88	0.37
2	Carpark	7174.97	7571.95	38.84	40.34	0.28	0.33
3	Bike Spaces	7142.17	7550.85	24.43	40.71	0.17	0.34
4	Pedestrian Access	7162.87	7566.83	46.65	8.16	0.33	0.07

### Luminaires



#### Luminaire A Data

Supplier	Philips
Type	BGP621_DM10_7000_40LED_5.1S_CLO_L90_NW
Lamp(s)	LED-HB 5.1S NW
Lamp Flux (klm)	7.00
File Name	Luma Mnl_BGP621_DM10_7000_40LED_5.1S_CLO_L90_NW.es
Maintenance Factor	1.00
Imax70,80,90(cd/klm)	540.9, 56.1, 0.0
No. in Project	22



#### Luminaire B Data

Supplier	Philips
Type	BGP615_DM10_3000_20LED_5.1S_CLO_L90_NW
Lamp(s)	LED-HB 5.1S NW
Lamp Flux (klm)	3.00
File Name	Luma Micro_BGP615_DM10_3000_20LED_5.1S_CLO_L90_NW.es
Maintenance Factor	1.00
Imax70,80,90(cd/klm)	540.9, 56.1, 0.0
No. in Project	9

### Layout

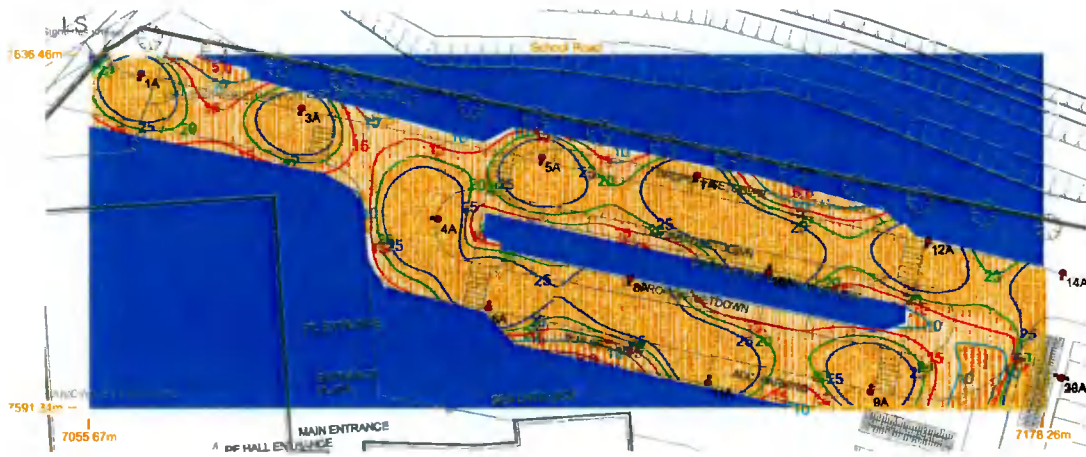
ID	Type	X	Y	Height	Angle	Tilt	Cant	Out-reach	Target X	Target Y	Target Z
1	A	7062.41	7634.03	6.00	251.00	0.00	0.00	0.75			
3	A	7083.12	7629.63	6.00	252.00	0.00	0.00	0.75			
4	A	7100.56	7615.46	6.00	170.00	0.00	0.00	0.75			
5	A	7113.90	7623.35	6.00	259.00	0.00	0.00	0.75			
6	A	7106.98	7604.04	6.00	79.00	0.00	0.00	0.75			
7	A	7133.85	7621.00	6.00	250.00	0.00	0.00	0.75			
8	A	7125.19	7607.96	6.00	256.00	0.00	0.00	0.75			
9	A	7156.06	7593.21	6.00	81.00	0.00	0.00	0.75			
10	A	7142.97	7608.71	6.00	80.00	0.00	0.00	0.75			
11	A	7135.21	7594.48	6.00	75.00	0.00	0.00	0.75			
12	A	7163.50	7612.68	6.00	251.00	0.00	0.00	0.75			
14	A	7180.81	7608.46	6.00	258.00	0.00	0.00	0.75			
15	B	7203.02	7558.99	4.00	72.00	0.00	0.00	0.75			
17	B	7168.72	7569.35	4.00	65.00	0.00	0.00	0.75			
18	A	7176.55	7580.41	4.00	157.00	0.00	0.00	0.75			
19	B	7151.36	7554.34	4.00	164.00	0.00	0.00	0.75			
20	B	7151.83	7554.11	4.00	348.00	0.00	0.00	0.75			

**Layout Continued**

ID	Type	X	Y	Height	Angle	Tilt	Cant	Out-reach	Target X	Target Y	Target Z
21	B	7155.46	7567.71	4.00	160.00	0.00	0.00	0.75			
22	B	7155.67	7567.54	4.00	350.00	0.00	0.00	0.75			
23	A	7180.55	7594.92	4.00	0.00	0.00	0.00	0.75			
24	A	7207.87	7571.84	4.00	160.00	0.00	0.00	0.75			
25	A	7213.03	7591.15	4.00	167.00	0.00	0.00	0.75			
26	A	7192.54	7576.30	4.00	346.00	0.00	0.00	0.75			
27	A	7197.70	7595.42	4.00	337.00	0.00	0.00	0.75			
29	A	7176.59	7580.57	4.00	350.00	0.00	0.00	0.75			
30	A	7180.58	7595.08	4.00	158.00	0.00	0.00	0.75			
31	A	7192.41	7576.21	4.00	159.00	0.00	0.00	0.75			
32	A	7197.54	7595.50	4.00	160.00	0.00	0.00	0.75			
30	B	7159.54	7580.60	4.00	341.00	0.00	0.00	0.75			
31	B	7159.47	7580.64	4.00	148.00	0.00	0.00	0.75			
32	B	7184.71	7563.71	4.00	63.00	0.00	0.00	0.75			

## Horizontal Illuminance (lux)

School Road

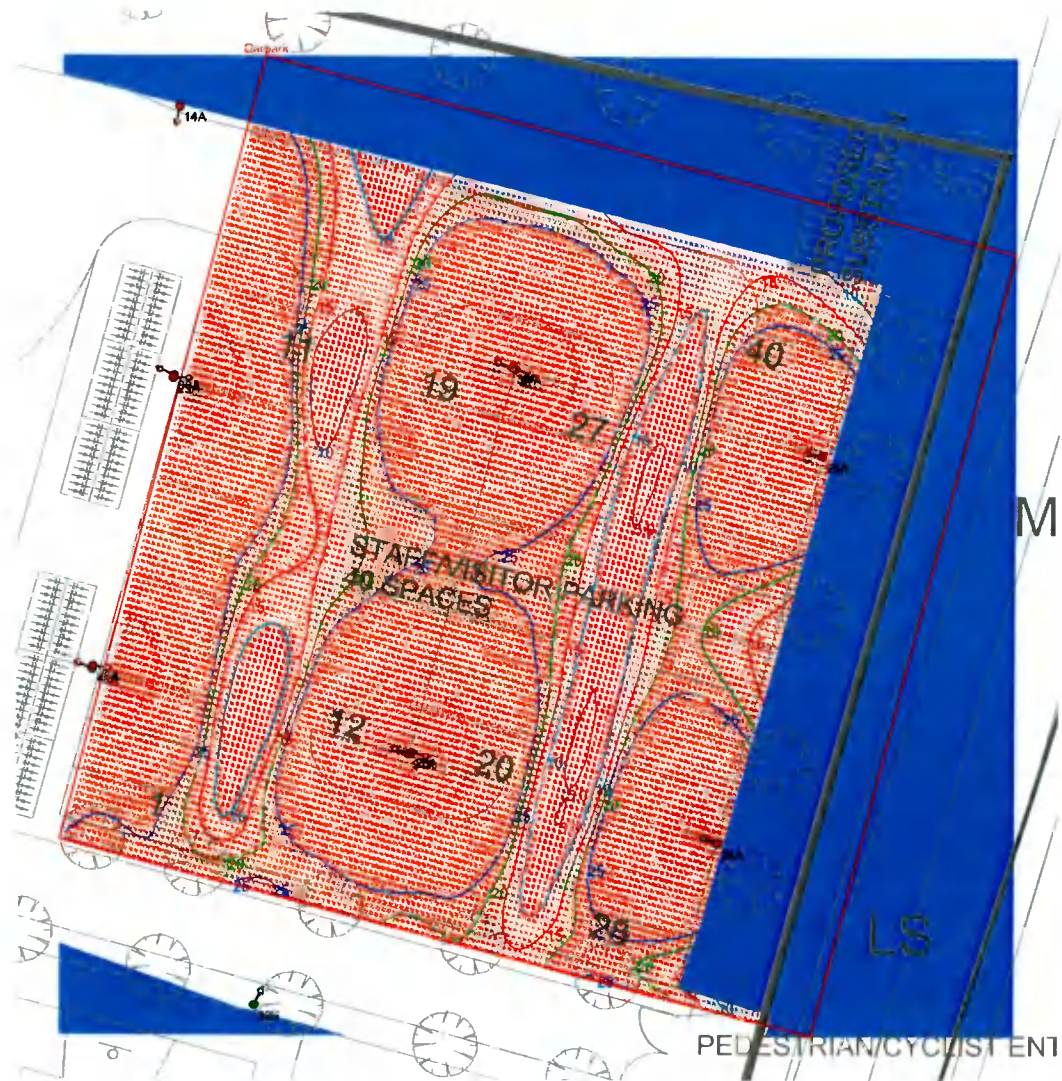


### Results

Eav	25.00
Emin	3.98
Emax	107.03
Emin/Emax	0.04
Emin/Eav	0.16

## Horizontal Illuminance (lux)

Carpark

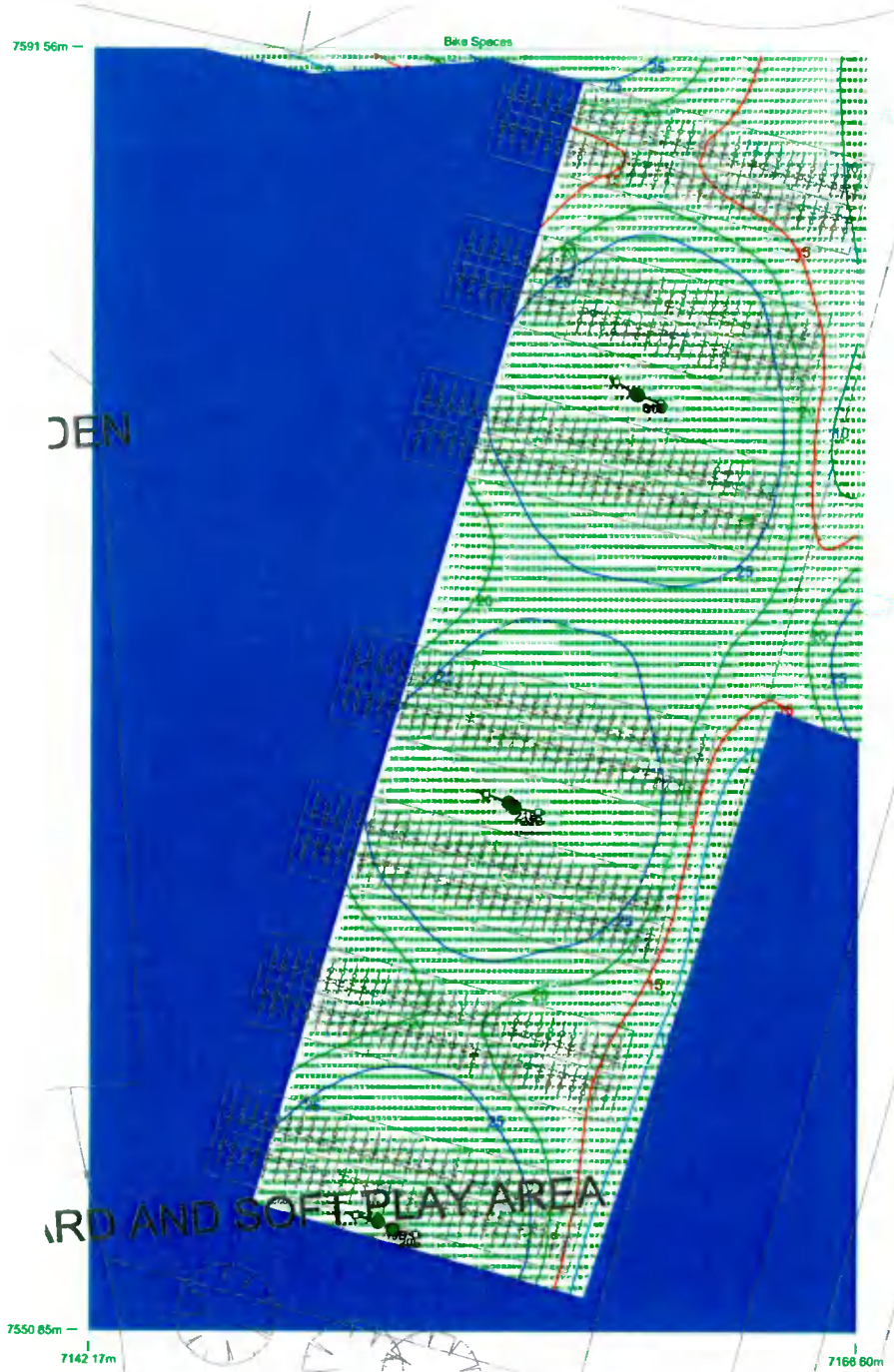


### Results

Eav	38.30
Emin	4.53
E <sub>max</sub>	170.32
E <sub>min</sub> /E <sub>max</sub>	0.03
E <sub>min</sub> /E <sub>av</sub>	0.12

## Horizontal Illuminance (lux)

Bike Spaces

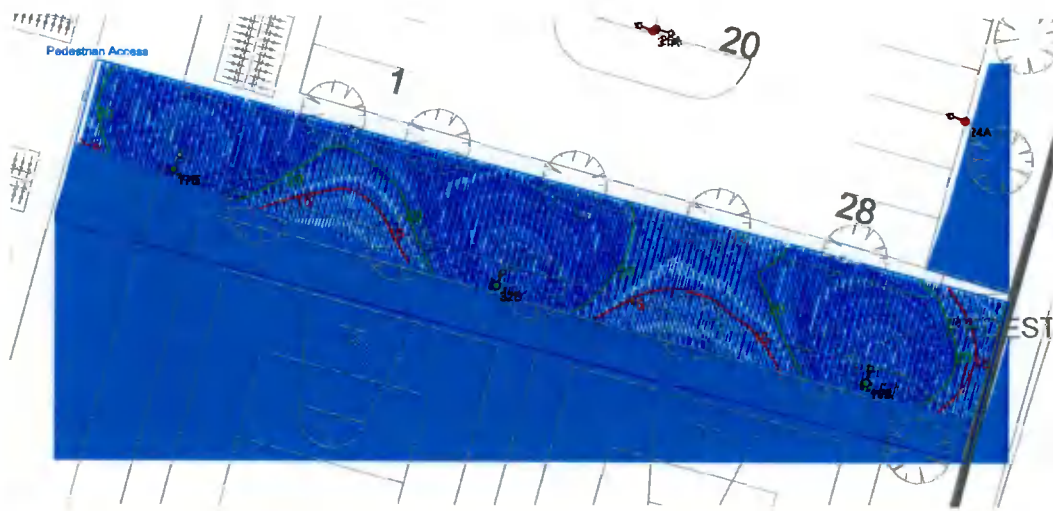


### Results

Eav	28.31
Emin	5.52
Emax	74.17
Emin/Emax	0.07
Emin/Eav	0.20

## Horizontal Illuminance (lux)

Pedestrian Access



### Results

Eav	25.39
Emin	7.57
E <sub>max</sub>	50.75
E <sub>min</sub> /E <sub>max</sub>	0.15
E <sub>min</sub> /E <sub>av</sub>	0.30