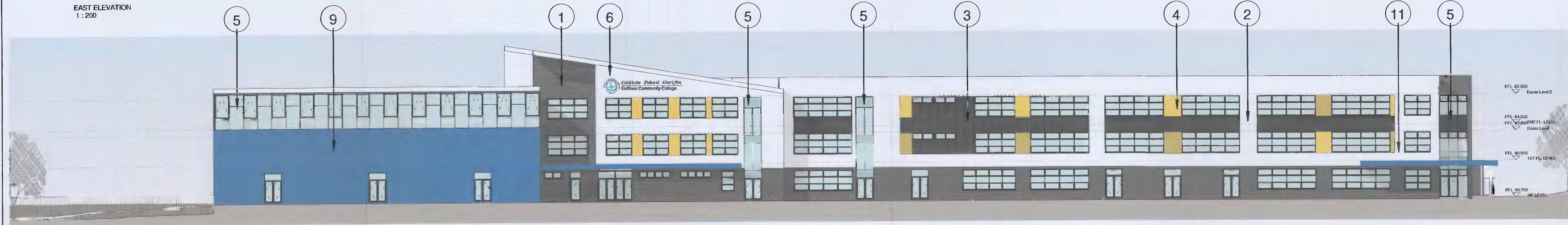
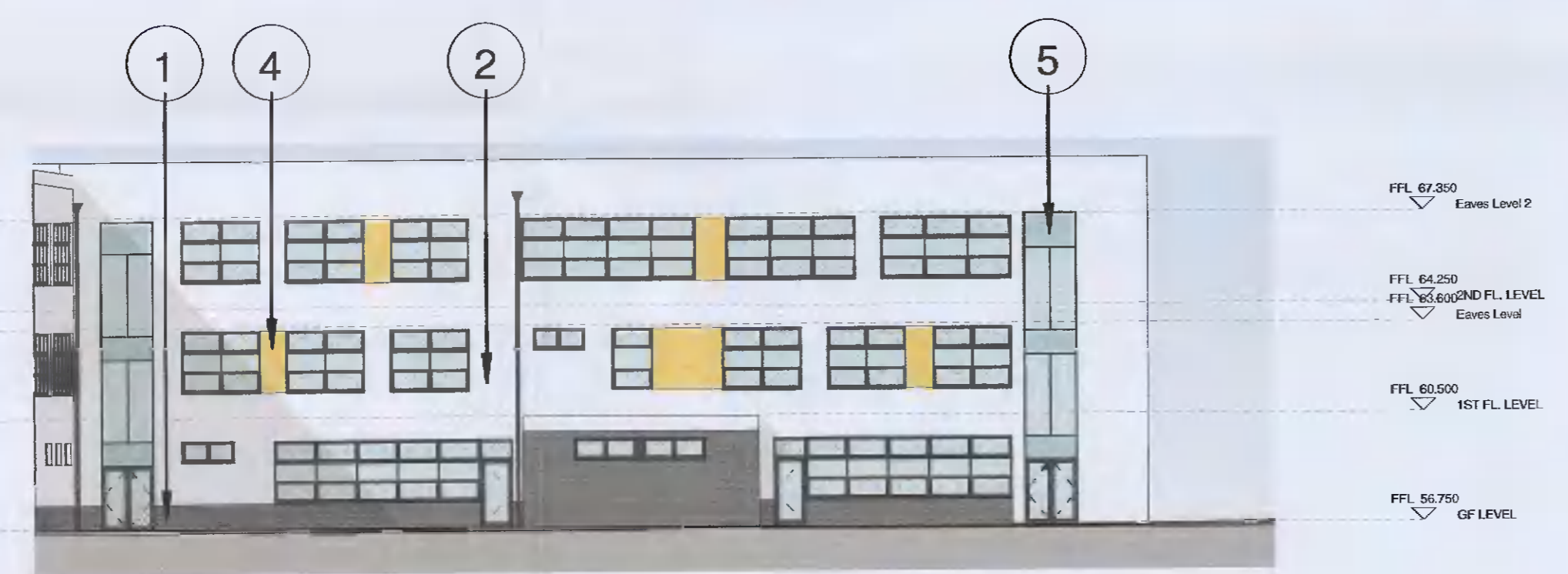


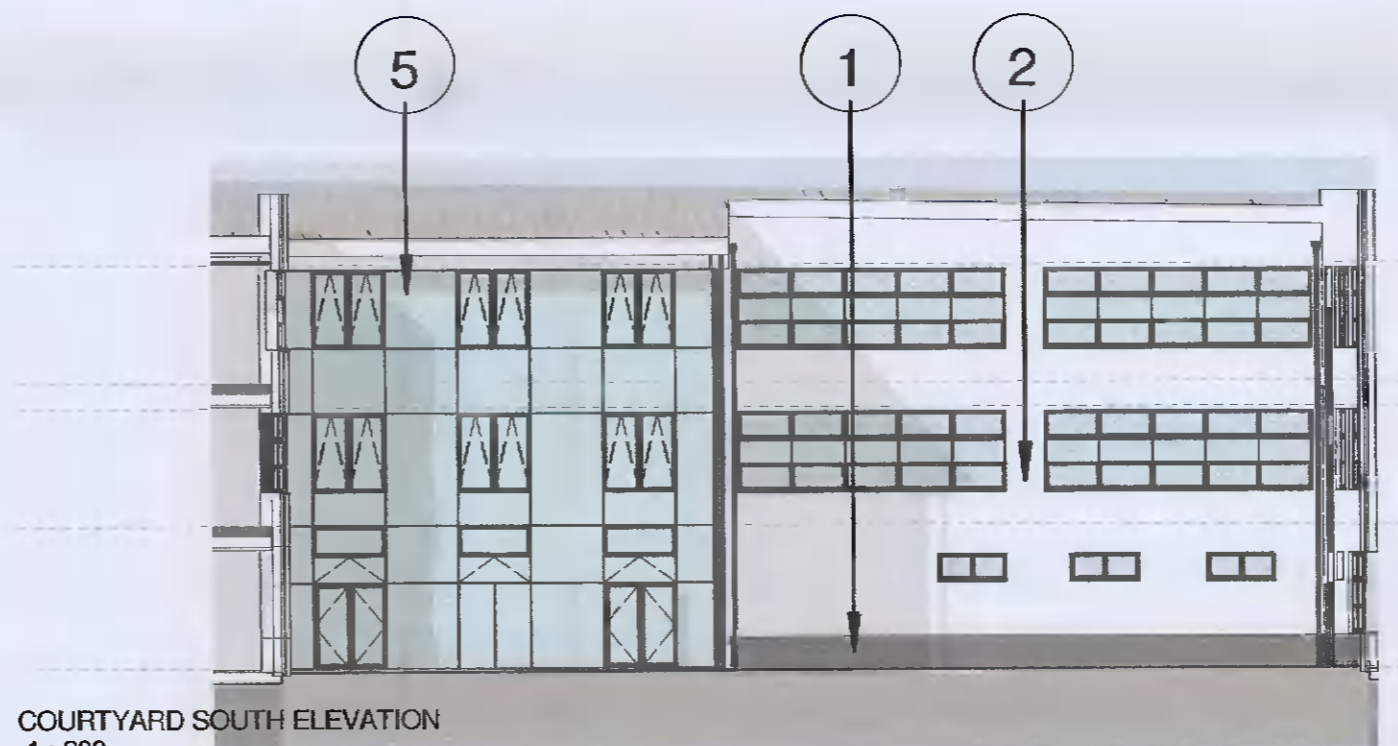
EAST ELEVATION
1 : 200



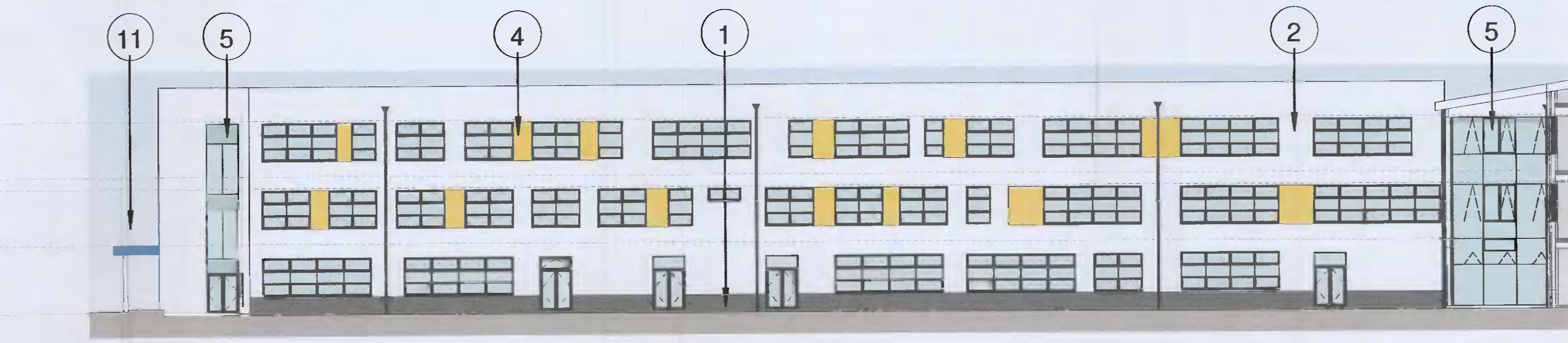
WEST ELEVATION
1 : 200



COURTYARD WEST ELEVATION
1 : 200



COURTYARD SOUTH ELEVATION
1 : 200



COURTYARD EAST ELEVATION
1 : 200

Notes:
DO NOT SCALE FROM THIS DRAWING. USE FIGURED DIMENSIONS IN ALL CASES. VERIFY DIMENSIONS ON SITE AND REPORT ANY DISCREPANCIES TO THE ARCHITECTS IMMEDIATELY. THIS DRAWING TO BE READ IN CONJUNCTION WITH THE ARCHITECTS SPECIFICATION. © THIS DRAWING IS COPYRIGHT AND MAY ONLY BE REPRODUCED WITH THE ARCHITECTS PERMISSION.

Rev	Date	DRN	Description
P01	2021.06.02	TH	Issued for Planning

- ① Grey Colour Brickwork Facade
- ② White Colour Render Finish
- ③ Grey Colour Rainscreen Cladding
- ④ Coloured Rainscreen Cladding
- ⑤ Selected Colour Thermally Broken Aluminium Windows/Doors/Curtain Wall Glazing with Glass Spandrel
- ⑥ Painted Metal Lettering and School Crest
- ⑦ Selected Sloped Roof
- ⑧ Roof Mounted Solar PV Panels

- ⑨ Navy Blue Colour Render Finish
- ⑩ Light Blue Colour Render Finish
- ⑪ Canopy Roof with Blue Fascia Flashing

VOLUME A.3.1

Client Details:
Department Of Education

Project Details:
Proposed New School
Griffen Community College, Lucan

Purpose 3.0 Planning			
Drawing Title: Elevations 02			
Status S2	Drawn By: TH	Checked By: TH	
Job No P19-073K	Date 2021.06.02	Scale @A1 1 : 200	
Drawing Number		Revision	
P19-073K-RAU-19-XX-DR-A-32002		P01	

Reddy Architecture + Urbanism
Rugby Business Park,
Carrigaline Rd, Douglas,
Cork, T12 P058
T: +353 (0)21 4362922
W: www.reddyarchitecture.com
E: info@reddyarchitecture.com