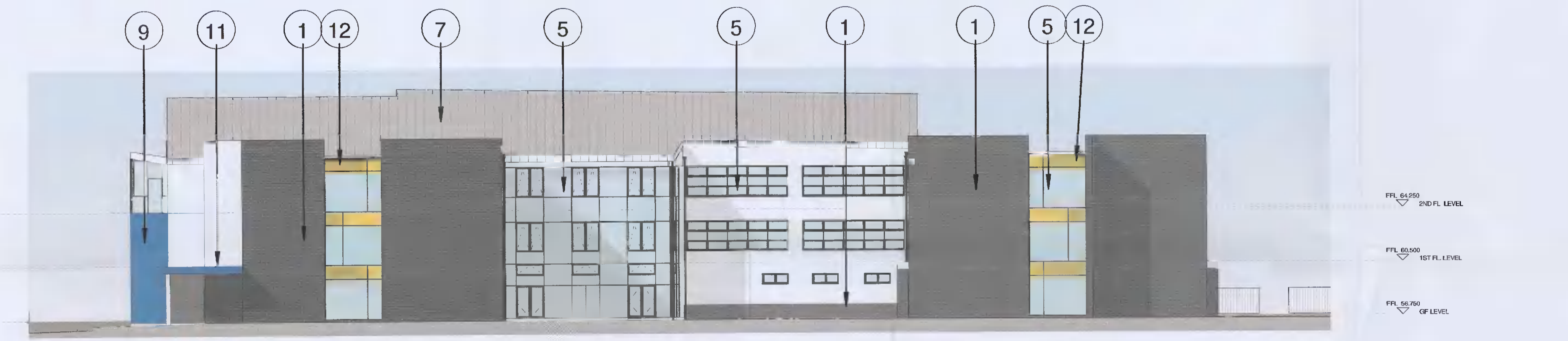


NORTH ELEVATION  
1 : 200



SOUTH ELEVATION  
1 : 200

Notes:  
DO NOT SCALE FROM THIS DRAWING. USE FIGURED DIMENSIONS IN ALL CASES. VERIFY DIMENSIONS ON SITE AND REPORT ANY DISCREPANCIES TO THE ARCHITECTS IMMEDIATELY. THIS DRAWING IS TO BE READ IN CONJUNCTION WITH THE ARCHITECTS SPECIFICATION. © THIS DRAWING IS COPYRIGHTED AND MAY ONLY BE REPRODUCED WITH THE ARCHITECTS PERMISSION.

PO1	2021.06.02	TH	Issued for Planning
Rev	Date	DRN	Description

- ① Grey Colour Brickwork Facade
- ② White Colour Render Finish
- ③ Grey Colour Rainscreen Cladding
- ④ Coloured Rainscreen Cladding
- ⑤ Selected Colour Thermally Broken Aluminium Windows/Doors/Curtain Wall Glazing with Glass Spandrel
- ⑥ Painted Metal Lettering and School Crest
- ⑦ Selected Sloped Roof
- ⑧ Roof Mounted Solar PV Panels
- ⑨ Navy Blue Colour Render Finish
- ⑩ Light Blue Colour Render Finish
- ⑪ Canopy Roof with Blue Fascia Flashing
- ⑫ Coloured PPC Aluminium Spandrel Panels

**VOLUME A.3.1**

Client Details:  
Department Of Education

Project Details:  
Proposed New School  
Griffen Community College, Lucan

Purpose <b>3.0 Planning</b>			
Drawing Title: Elevations 01			
Status S2	Drawn By: TH	Checked By: TH	
Job No P19-073K	Date 2021.06.02	Scale@A1 1 : 200	
Drawing Number P19-073K-RAU-19-XX-DR-A-32001	Revision P01		

reddy architecture  
+urbanism

Reddy Architecture + Urbanism  
Carrigrohane Rd, Douglas,  
Cork, T12 P388  
T: +353 (0)21 4362922  
W: www.reddyarchitecture.com  
E: info@reddyarchitecture.com