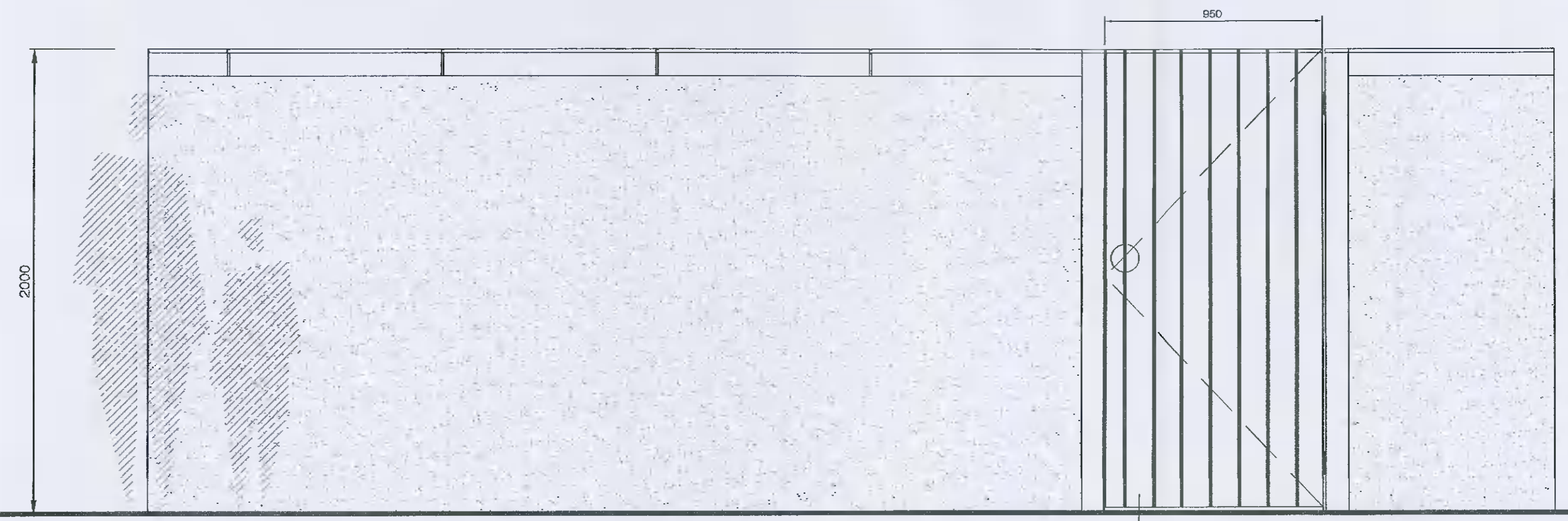
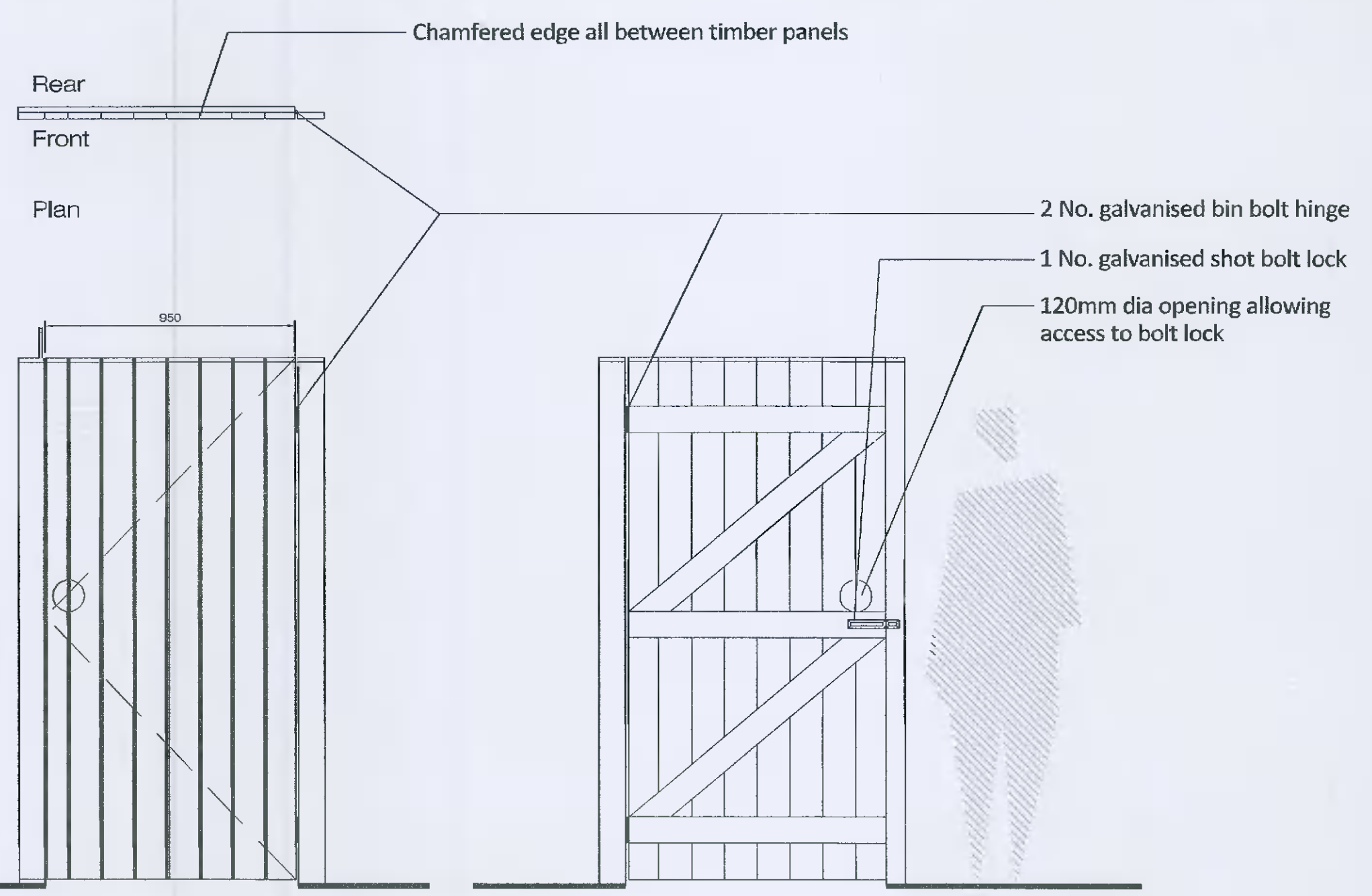


Note
Gate opens inward, into garden

Note
Brick - brick opening 950mm



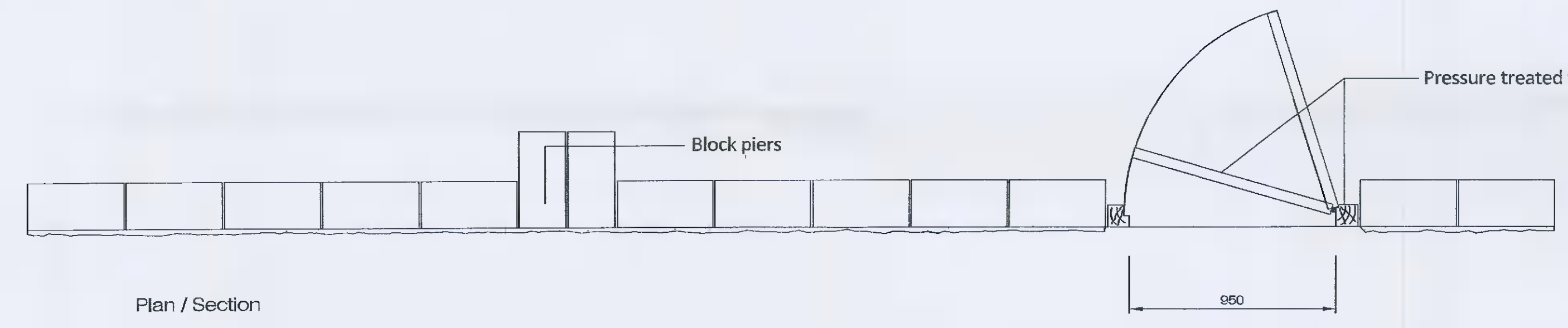
Front Elevation



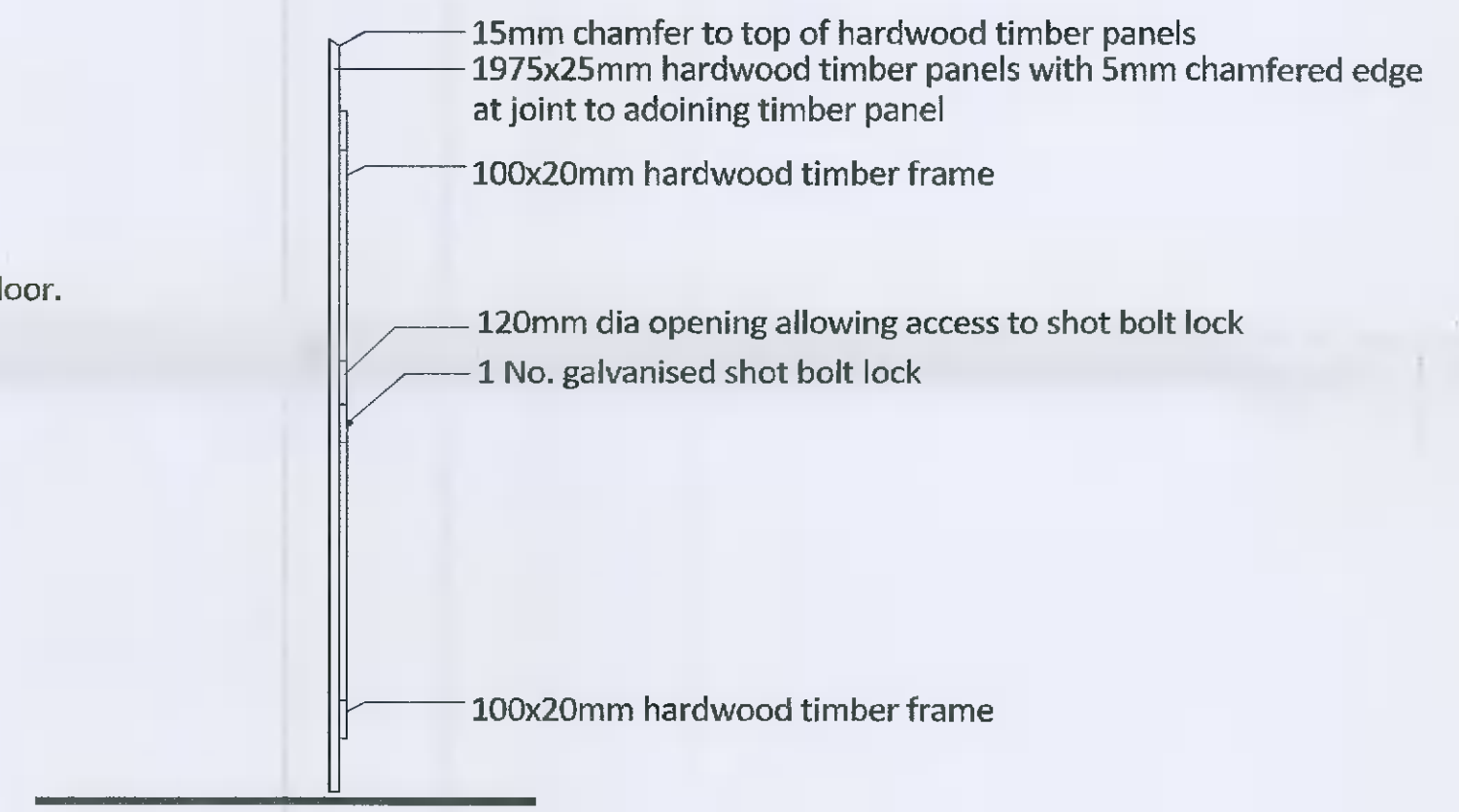
Front Elevation Entrance gate and frame
Rear Elevation Entrance gate and frame

Timber door to match St Helens Phase 2 access door to rear garden from public pathway, clear door opening 950mm

Note
All timber pressure treated with tanalith E or similar

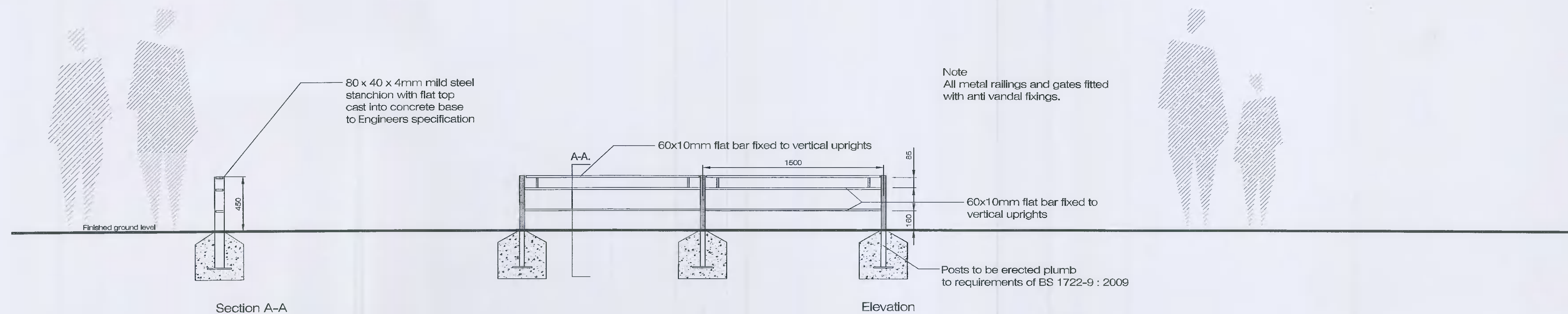


Plan / Section



Section Entrance gate

Detail D01 Dwg BD-02-PP 2.0mtr Front and side access gate detail from side and rear garden Scale @ 1:20



Section A-A

Elevation

Note
All metal railings and gates fitted with anti vandal fixings.

Detail D 02 Dwg BD-03-PP
450mm High Low Rail to edge of front garden areas
Scale @ 1:25

Note
All Metal work to be Plasgalv polyester powder coated to BS 1722-16:2009 painted in RAL 7015
Posts and rails to be erected plumb to requirements of BS 1722-9:2009

Project name: Aderrig Phase 2 Residential Development		Project number: 17-064
Drawing name: Boundary Details		Drawing number: BD-02-PP
Drawing scale @ A1: 1:20	Drawn by: d+ot	Checked by: ld
Status: Planning Application		Date: 20.05.2021
Contact details: Linda Doyle (Director) mobile: 087 257 4198 e-mail: linda@doyle-o'troithigh.com Dorothy O'troithigh (Director) mobile: 086 800 3499 e-mail: dorothy@doyle-o'troithigh.com		Office address: Pembroke House, 25-26 Upper Pembroke St, Dublin 2.
doyle o'troithigh landscape - architecture		