

DUPLEX TYPE F2

DUPLEX TYPE F2.0	
Total Floor Area (2-bed unit):	79.0m ²
DUPLEX TYPE F2.1	
Private Int. Stair	5.6m ²
First floor area	55.5m ²
Second floor area	55.5m ²
Total Floor Area (3-bed unit):	116.6m ²



UNIT TYPE KEY

Unit Type	Unit Level (Duplex only)
F1	X . 1

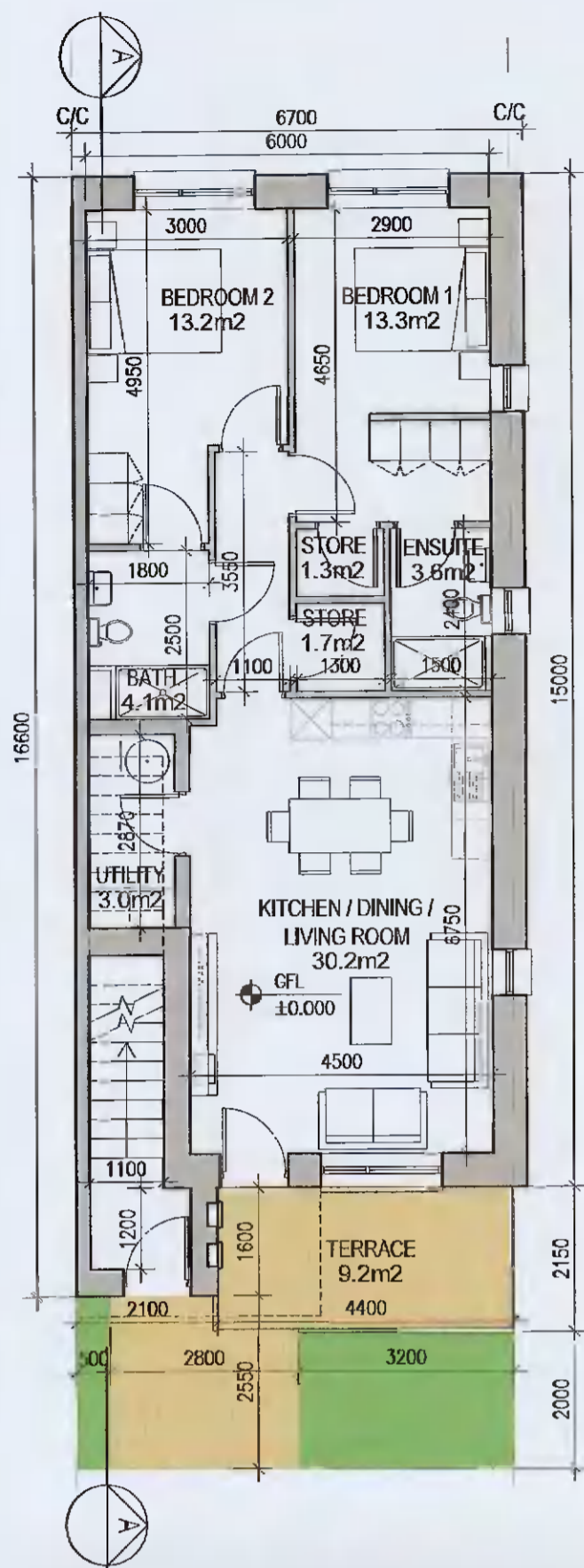
Finishes/Roof (if variations occur)

FINISHES
 Z - Plain white render
 Y - Brick
 X - Plain white render with grey brick areas
 V/W - Plain white render with brick areas

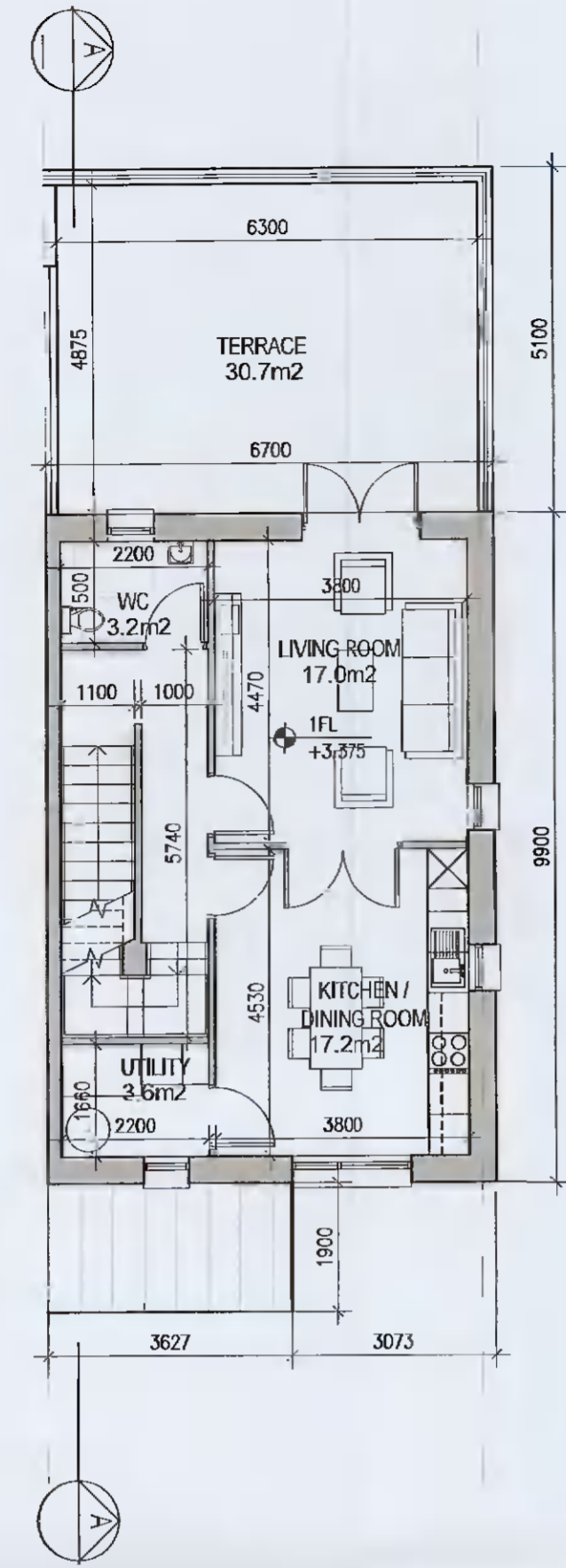
DUPLEX - Relates to front & rear elevations
HOUSES - Relates to front elevation (*)

ROOF FORM
 A1Y - Asymmetrical roof
 D1W - Gable roof with hip roof intersection
 D1W - Gable roof

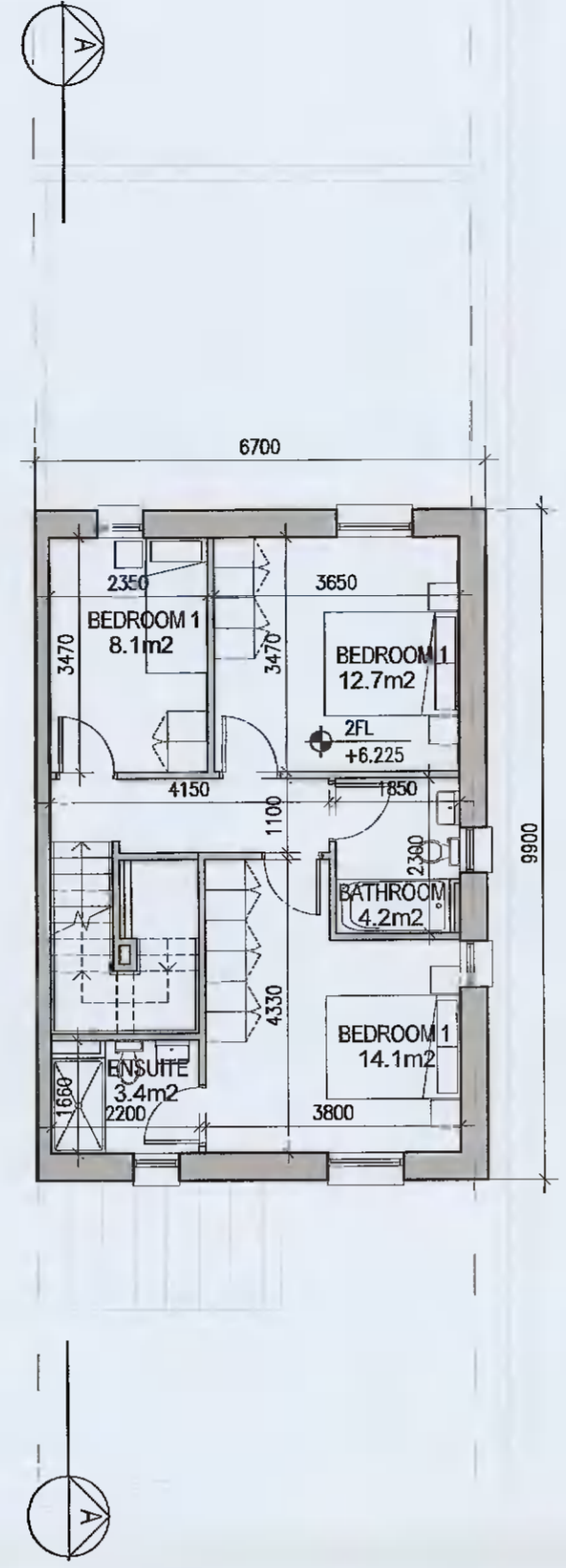
Note: refer to site layout (6259-P-003) for location of unit types and unit type drawings (6259-P-100/200 series) for details
 *A2, an exception, relates to the rear elevation



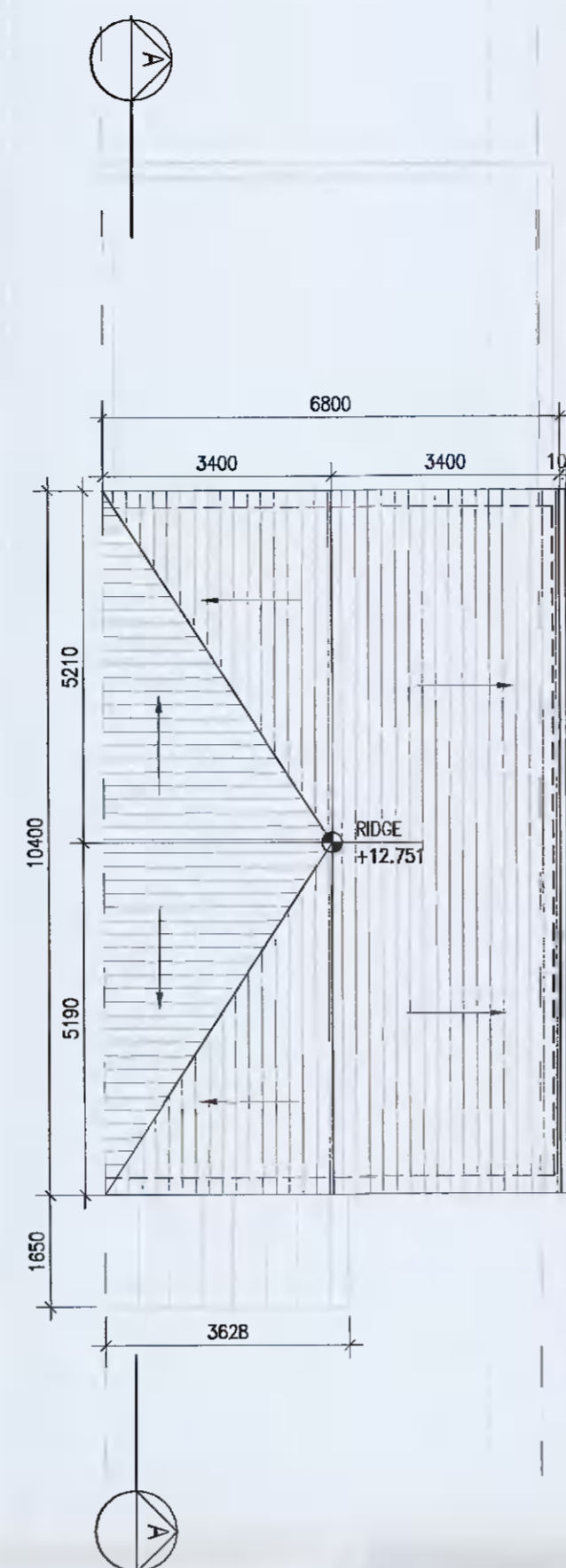
01 Ground Floor Plan [F2.0]
P-210 1:100BA1



02 First Floor Plan [F2.1]
P-210 1:100BA1



03 Second Floor Plan [F2.1]
P-210 1:100BA1



04 Roof Floor Plan
P-210 1:100BA1



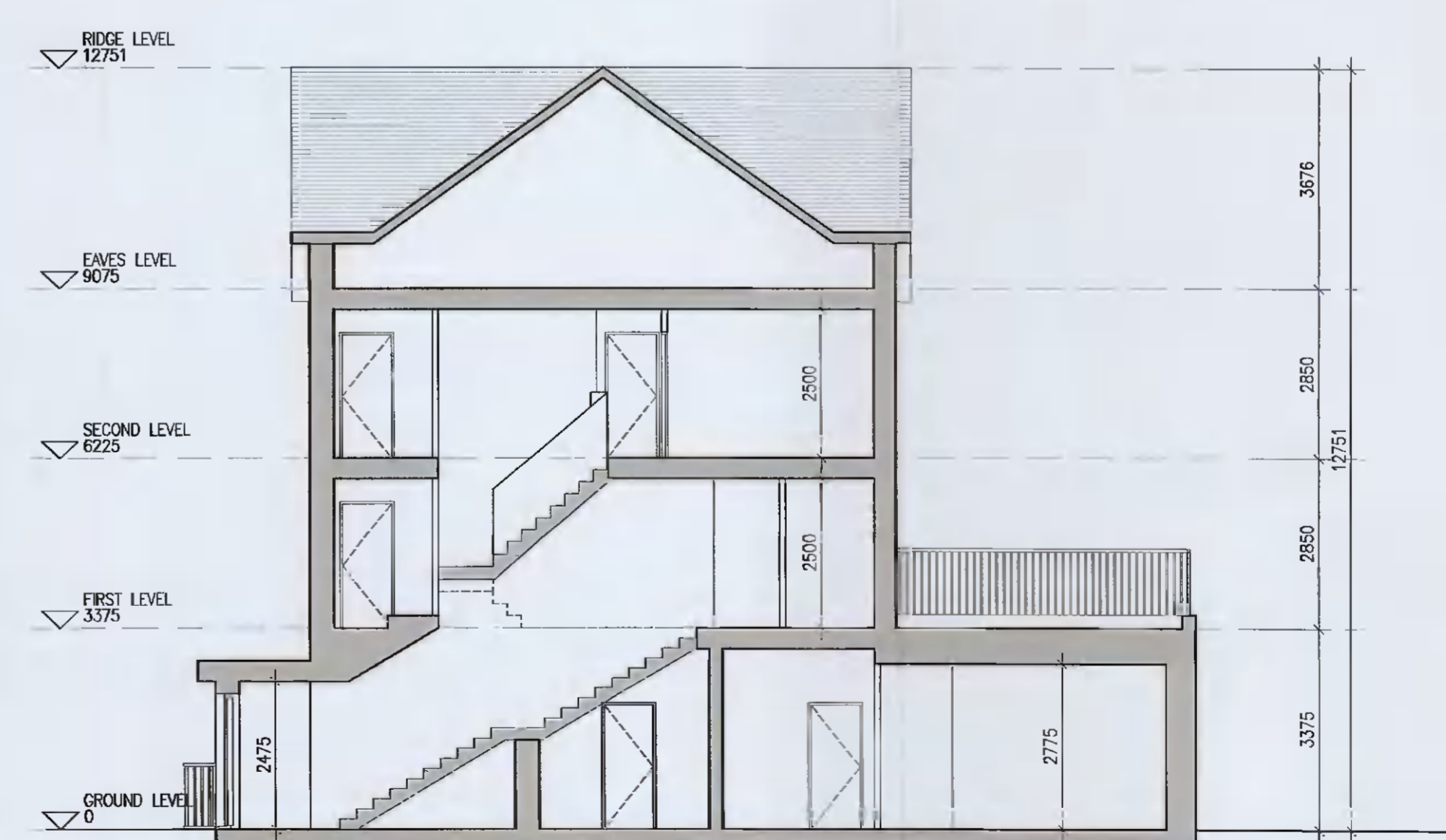
05 Front Elevation
P-210 1:100BA1



06 Gable Elevation
P-210 1:100BA1



07 Rear Elevation
P-210 1:100BA1



08 Typical Section [A-A]
P-210 1:100BA1

EXTERNAL FINISHES

WALLS: PAINTED SAND / CEMENT RENDER OR PROPRIETARY PRECOLOURED RENDER FINISH SELECTED BRICKWORK WHERE INDICATED ON DRAWINGS

WINDOWS: SELECTED PROPRIETARY DOUBLE / TRIPLE GLAZED WINDOW SYSTEM WITH FRAMES TO APPROVED COLOUR. OBTAINED GLAZING TO BATHROOMS AND EN-SUITES.

DOORS: SELECTED PROPRIETARY DOORS AND GLAZED SIDE SCREENS TO APPROVED COLOUR.

RAINWATER GOODS: UPVC OR POWDER COATED METAL GUTTERS AND RAINWATER PIPES TO SELECTED COLOUR.

MAIN ROOF: CONCRETE ROOF TILES IN SELECTED COLOUR.

LOW LEVEL PROJECTION: ZINC CANOPY TO ENTRANCE OF UNITS

OTHER ITEMS: UPVC OR POWDER COATED METAL FASCIAS, SOFFITS AND BARGE BOARDS PAINTED. MILDSTEEL RAILINGS AND BALUSTRADES

Notes

- Copyright Reserved
- Work to figure dimensions only. Do not scale drawing
- The contractor is responsible for checking all levels and dimensions on site and shall refer all discrepancies to the Architect
- Where appropriate, for details of f.c. structure, or mechanical and electrical details, see Engineers drawings
- Proprietary items shall be fixed as strict accordance with manufacturers instructions.
- Sizes of proprietary items shall be checked with manufacturer.
- The contractor shall be responsible for the coordination of structure, finishes and services.

No.	Date	Revision	Initials
01	12.04.2021	Preliminary issue for comment	BKD
02	20.05.2021	ISSUED FOR PLANNING	BKD

Project	Aderrig Phase 2 Adamstown SDZ Residential Development
Drawing Title	Duplex Type F2 (end-terrace) Non-handed-Plan, Section, Elevation
Drawing No	6259-P-210
Scale	1:100@A1
Rev	02
Drawn	BKD
Date	12.04.2021

DUPLEX TYPE F2

6-7 HARPCOURT TERRACE, DUBLIN 5, IRELAND
 T: +353 1 410 2400 F: +353 1 409 7305
 e: info@bkd.ie www.bkd.ie

bkdarchitects
 BURKE-KENNEDY DOYLE