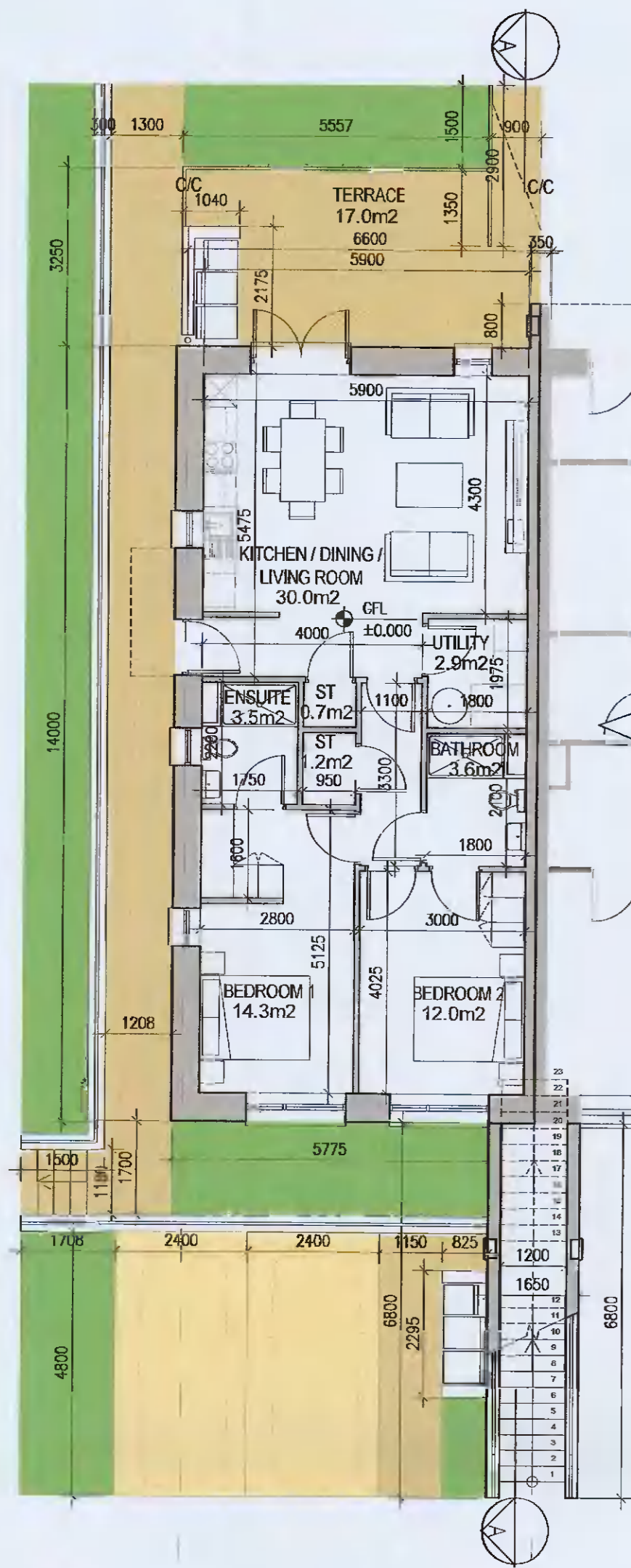
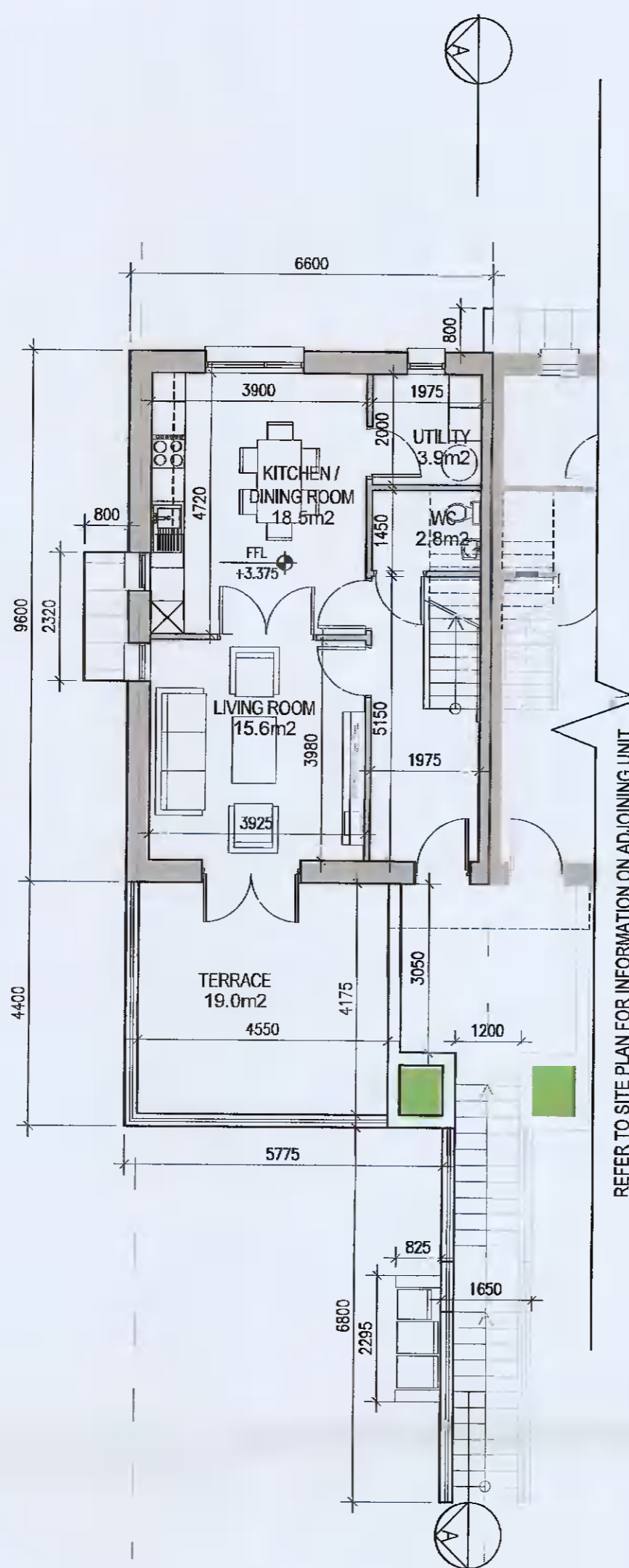


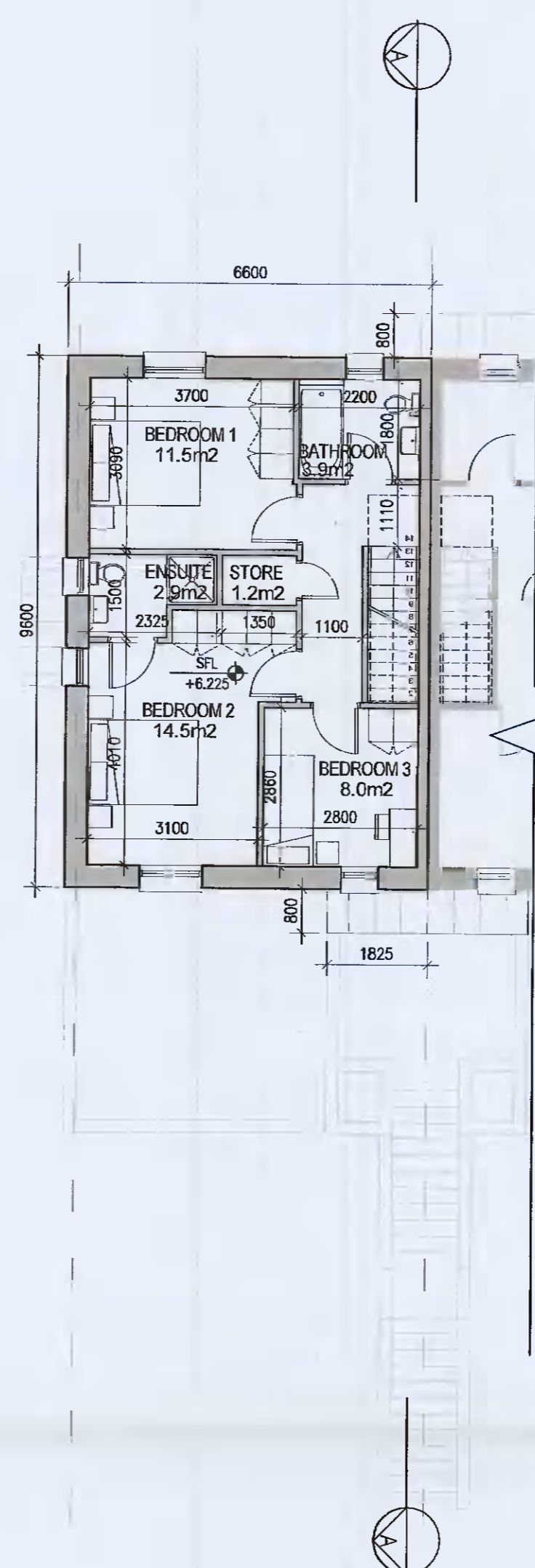
DUPLEX TYPE E3 [HANDED]



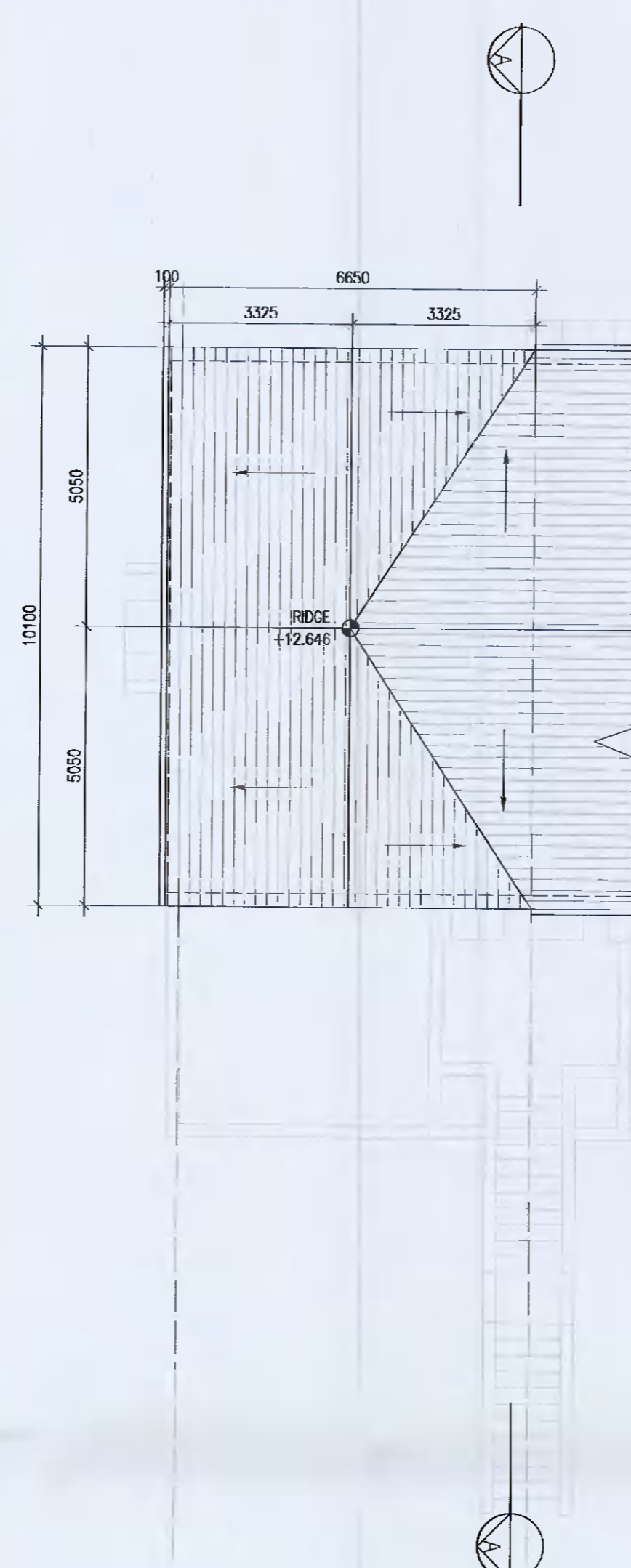
01 Ground Floor Plan [E3.0]
P-206 1:100@A1



02 First Floor Plan [E3.1]
P-206 1:100@A1



03 Second Floor Plan [E3.1]
P-206 1:100@A1



04 Roof Floor Plan
P-206 1:100@A1

UNIT TYPE KEY

Unit Type	Unit Level (Duplex only)
F1	X . 1
Finishes/Roof (if variations occur)	

FINISHES
 Z - Plain white render
 Y - Brick
 X - Plain white render with grey brick areas
 V/W - Plain white render with brick areas

DUPLEX - Relates to front & rear elevations
 HOUSES - Relates to front elevation (*)

ROOF FORM
 A1Y - Asymmetrical roof
 D1V - Cable roof with hip roof intersection
 D1W - Cable roof

Note: refer to site layout (6259-P-003) for location of unit types and unit type drawings (6259-P-100/ 200 series) for details
 *A2, an exception, relates to the rear elevation

DUPLEX TYPE E3.0
 Total Floor Area (2-bed unit): **79.2m²**

DUPLEX TYPE E3.1
 First floor area: 52.8m²
 Second floor area: 52.8m²
 Total Floor Area (3-bed unit): **105.6m²**

EXTERNAL FINISHES

WALLS: PAINTED SAND / CEMENT RENDER OR PROPRIETARY PRECOLOURED RENDER FINISH SELECTED BRICKWORK WHERE INDICATED ON DRAWINGS

WINDOWS: SELECTED PROPRIETARY DOUBLE / TRIPLE GLAZED WINDOW SYSTEM WITH FRAMES TO APPROVED COLOUR. OBTAINED GLAZING TO BATHROOMS AND EN-SUITES.

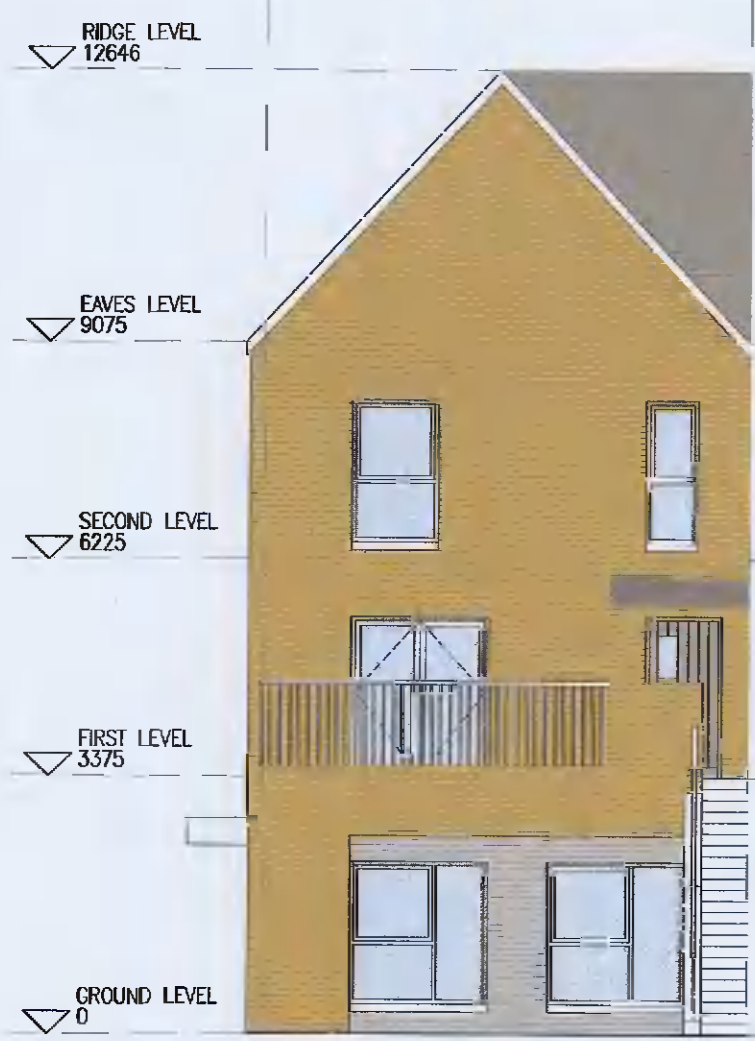
DOORS: SELECTED PROPRIETARY DOORS AND GLAZED SIDE SCREENS TO APPROVED COLOUR.

RAINWATER GOODS: uPVC OR POWDER COATED METAL GUTTERS AND RAINWATER PIPES TO SELECTED COLOUR.

MAIN ROOF: CONCRETE ROOF TILES IN SELECTED COLOUR.

LOW LEVEL PROJECTION: ZINC CANOPY TO ENTRANCE OF UNITS

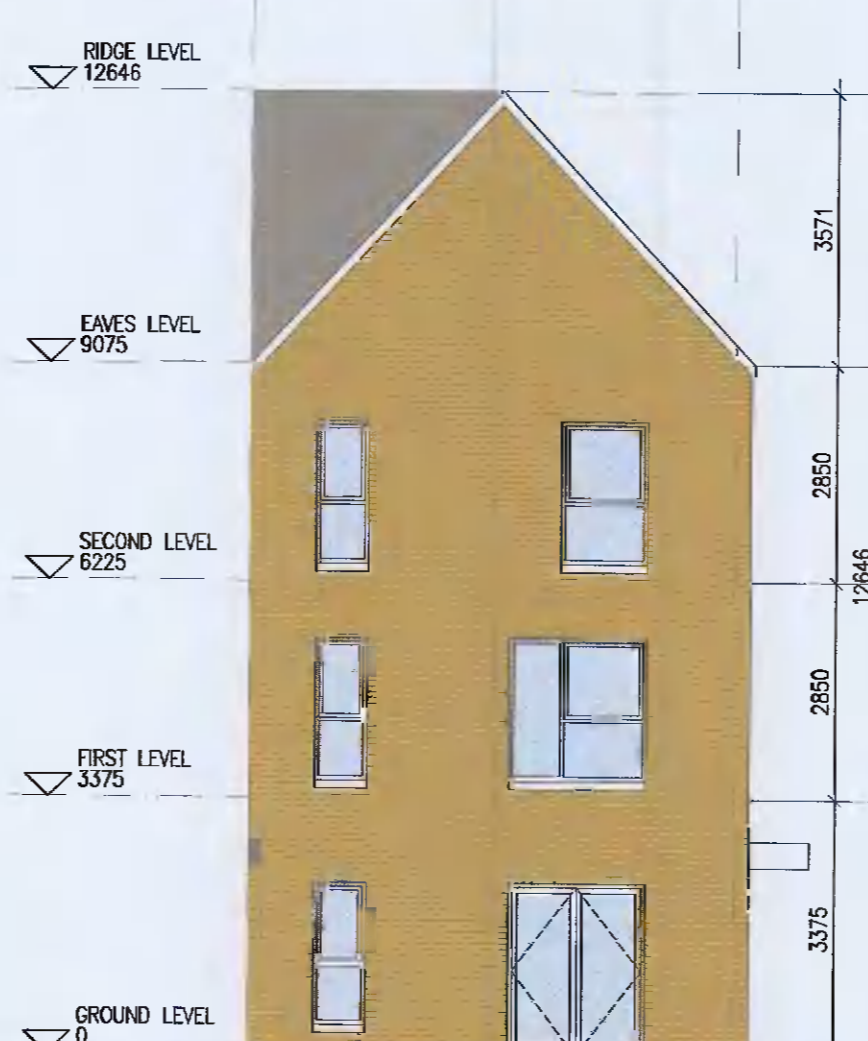
OTHER ITEMS: uPVC OR POWDER COATED METAL FASCIAS, SOFFITS AND BARGE BOARDS PAINTED MILDSTEEL RAILINGS AND BALUSTRADES



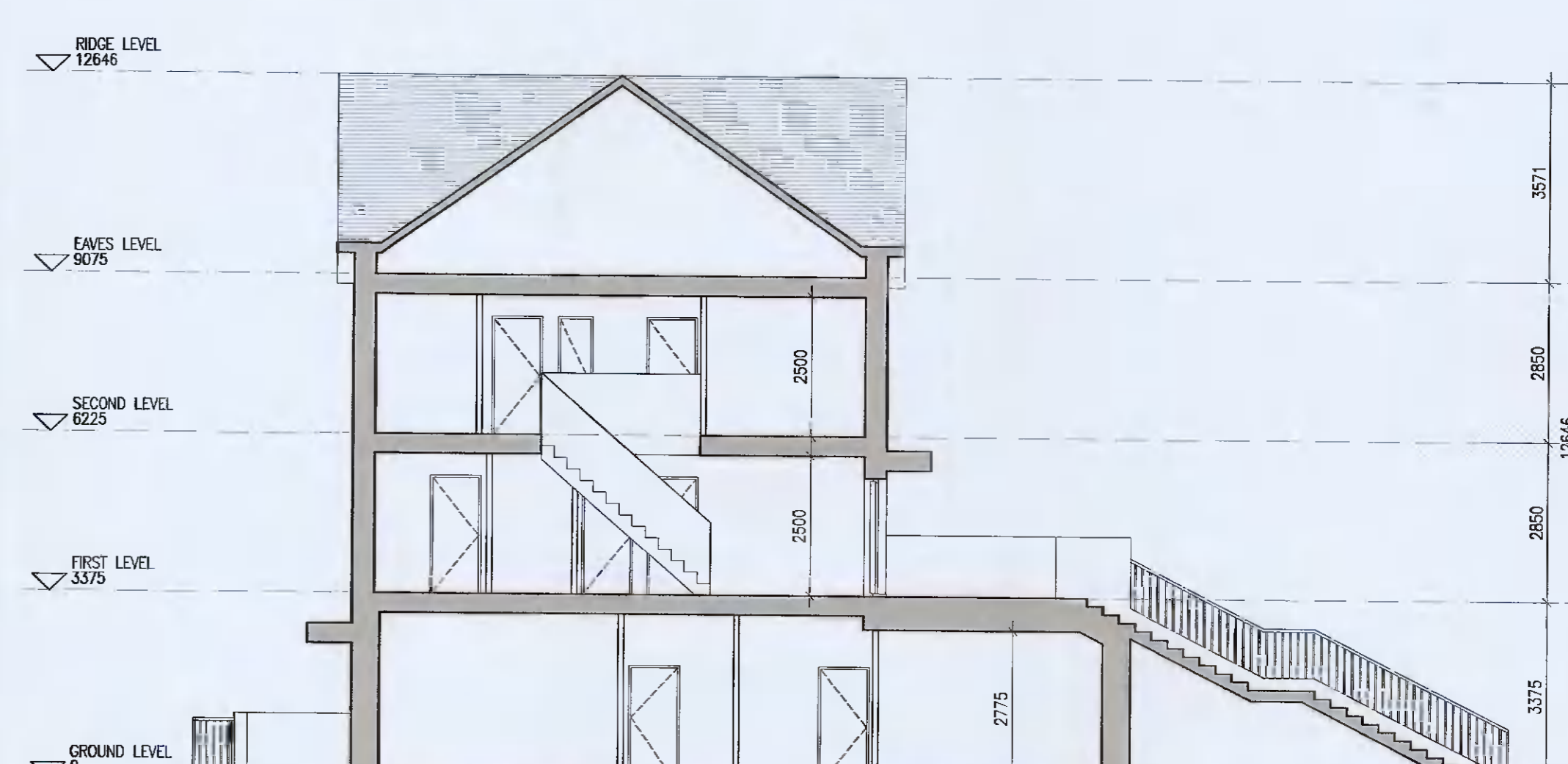
05 Rear Elevation
P-206 1:100@A1



06 Gable Elevation
P-206 1:100@A1



07 Front Elevation
P-206 1:100@A1



08 Typical Section [A-A]
P-206 1:100@A1

Notes

- Copyright Reserved
- Work to figured dimensions only. Do not scale drawing
- The contractor is responsible for checking all levels and dimensions on site and shall refer all discrepancies to the Architect
- Where appropriate, for details of i.e. structure, or mechanical and electrical details, see Engineers drawings
- Proprietary items shall be based in strict accordance with manufacturers instructions
- Scale of proprietary items shall be checked with manufacturer
- The contractor shall be responsible for the coordination of structure, finishes and services.

Issue Status

Progress	
Planning Application	
Fire Cert	
Disability Cert	
Tender	
Construction	
As Built	
Information Only	

No.	Date	Revision	Initials
01	12.04.2021	Preliminary Issue for comment	BKD
02	20.05.2021	ISSUED FOR PLANNING	BKD

Project
Aderrig Phase 2, Adamstown SDZ Residential Development

Drawing Title: Duplex Type E3 (end-terrace) Handed - Plans, Sections, Elevations
 Drawing No: 6259-P-206
 Scale: 1:100@A1 Rev: 02 Drawn: BKD Date: 12.04.2021

DUPLEX TYPE E3

6-7 HARCOURT TERRACE, DUBLIN 2, IRELAND
 T: +353-1-610-7400 F: +353-1-478-7385
 e: arch@bkd.ie www.bkd.ie

