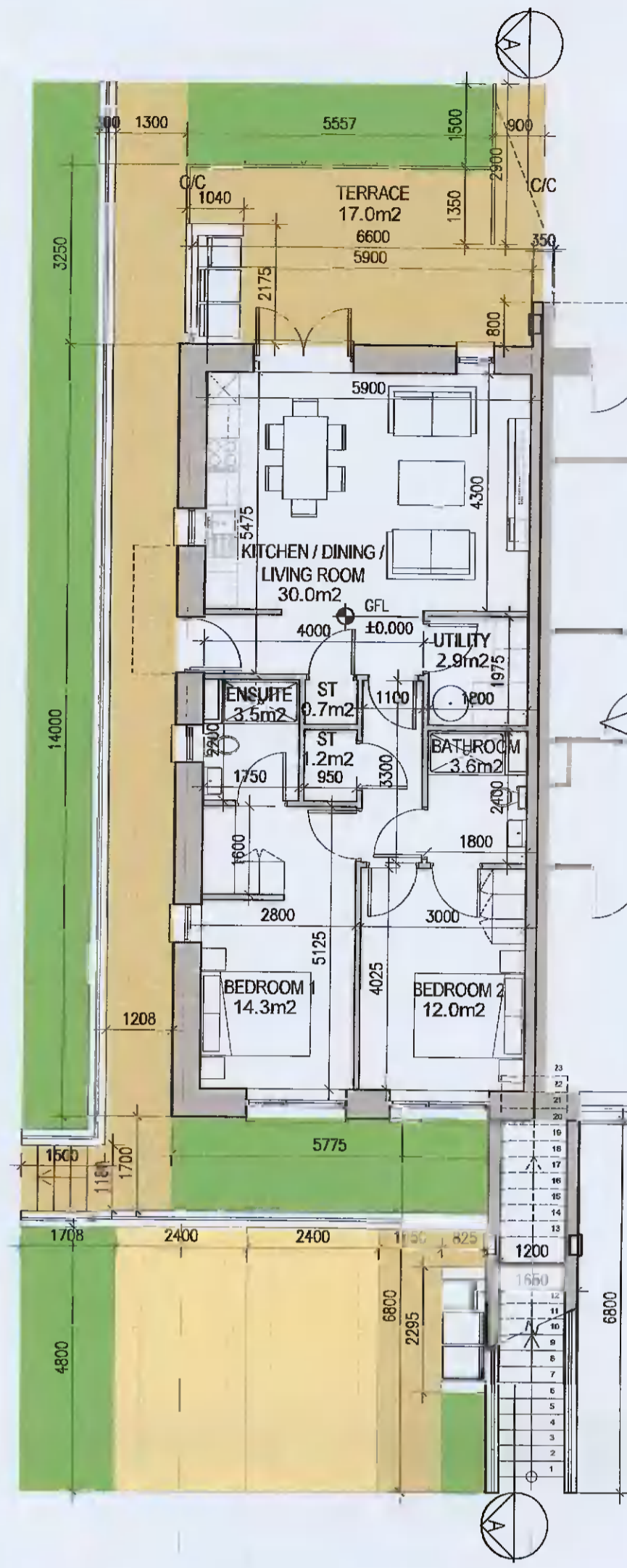
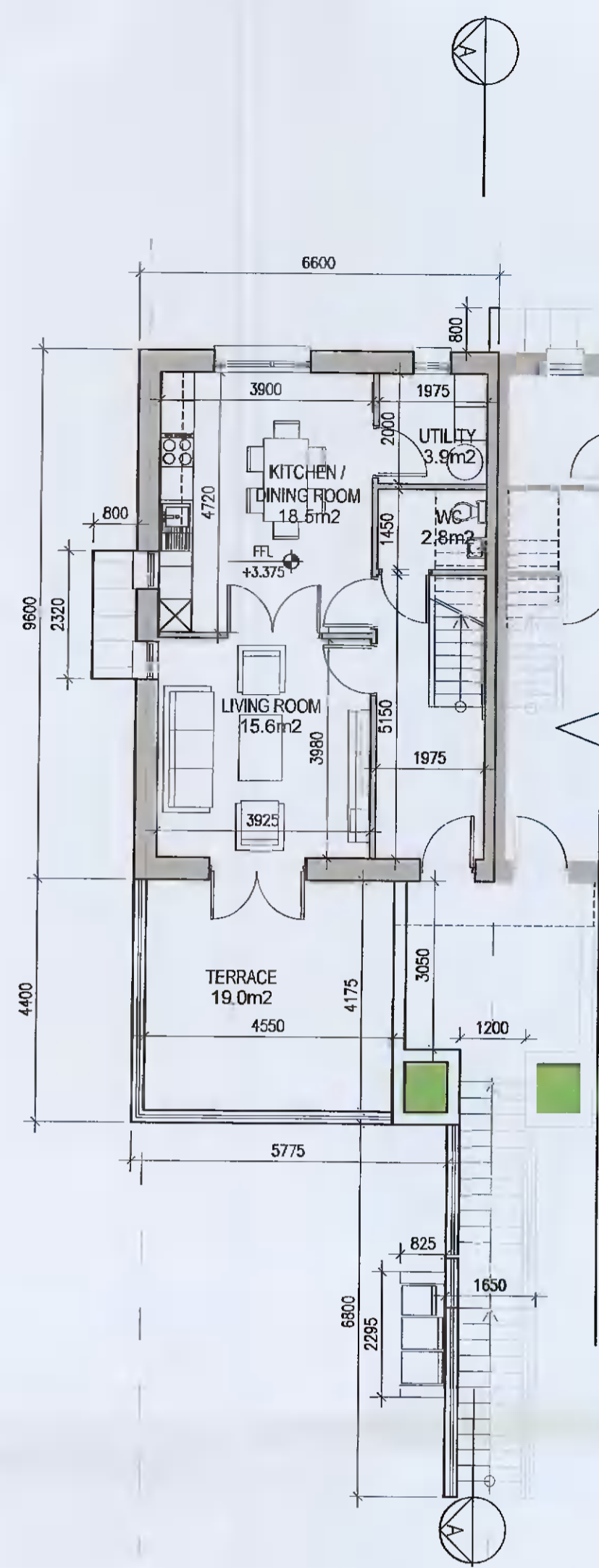


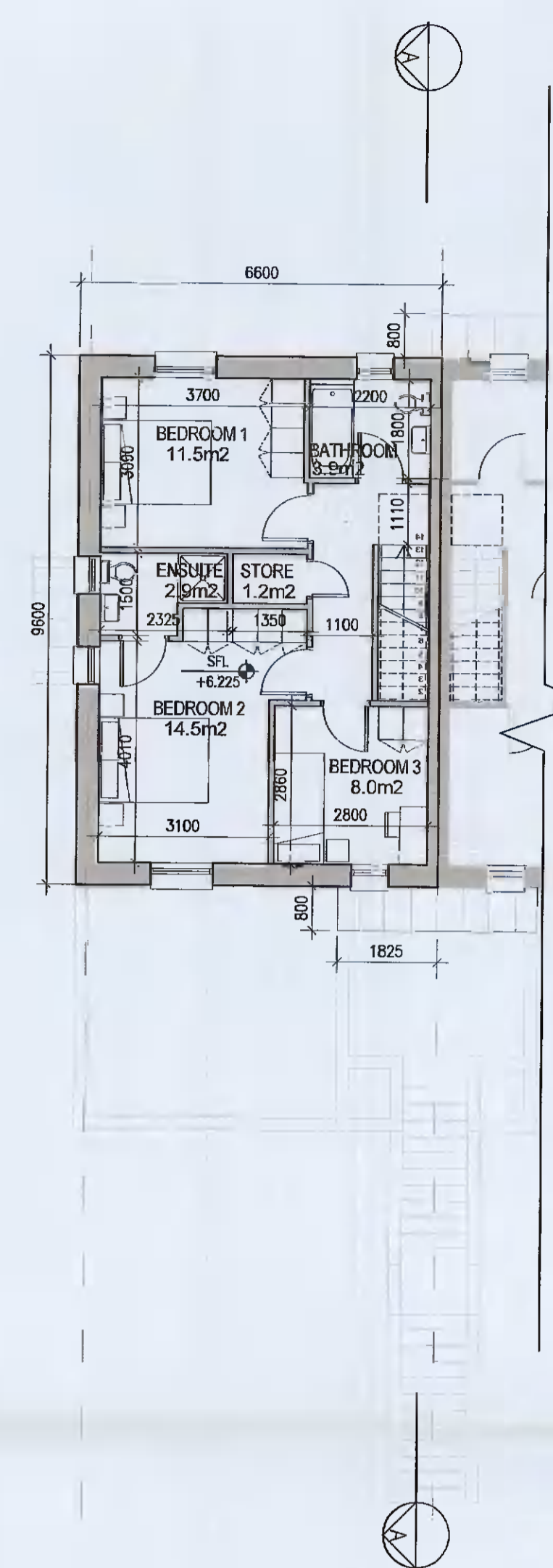
DUPLEX TYPE E3 [HANDED]



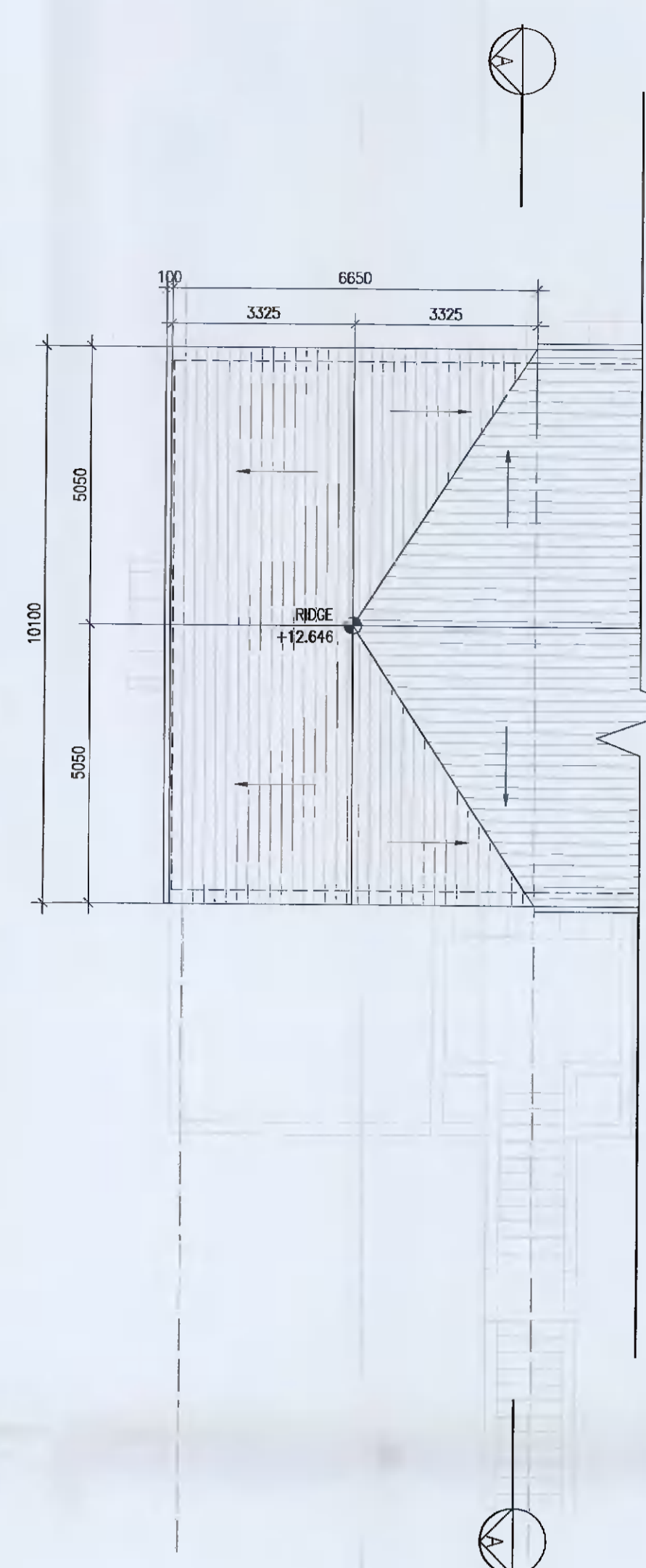
01 Ground Floor Plan [E3.0]
P-206 1:100BA1



02 First Floor Plan [E3.1]
P-206 1:100BA1



03 Second Floor Plan [E3.1]
P-206 1:100BA1



04 Roof Floor Plan
P-206 1:100BA1

UNIT TYPE KEY

Unit Type: [F1] [X] [1]
Unit Level (Duplex only): [1]
Finishes/Roof (if variations occur)

FINISHES
Z- Plain white render
Y- Brick
X- Plain white render with grey brick areas
V/W- Plain white render with brick areas

DUPLEX- Relates to front & rear elevations
HOUSES- Relates to front elevation (*)

ROOF FORM
A1Y- Asymmetrical roof
D1V- Gable roof with hip roof intersection
D1W- Gable roof

Note: refer to site layout (6259-P-003) for location of unit types and unit type drawings (6259-P-100/ 200 series) for details
*A2, an exception, relates to the rear elevation

EXTERNAL FINISHES

WALLS: PAINTED SAND / CEMENT RENDER OR PROPRIETARY PRECOLOURED RENDER FINISH. SELECTED BRICKWORK WHERE INDICATED ON DRAWINGS

WINDOWS: SELECTED PROPRIETARY DOUBLE / TRIPLE GLAZED WINDOW SYSTEM WITH FRAMES TO APPROVED COLOUR. OBTAINED GLAZING TO BATHROOMS AND EN-SUITES.

DOORS: SELECTED PROPRIETARY DOORS AND GLAZED SIDE SCREENS TO APPROVED COLOUR.

RAINWATER GOODS: uPVC OR POWDER COATED METAL GUTTERS AND RAINWATER PIPES TO SELECTED COLOUR.

MAIN ROOF: CONCRETE ROOF TILES IN SELECTED COLOUR.

LOW LEVEL PROJECTION: ZINC CANOPY TO ENTRANCE OF UNITS

OTHER ITEMS: uPVC OR POWDER COATED METAL FASCIAS, SOFFITS AND BARGE BOARDS PAINTED. MILDSTEEL RAILINGS AND BALUSTRADES



DUPLEX TYPE E3.0
Total Floor Area (2-bed unit): 79.2m²

DUPLEX TYPE E3.1
First floor area: 52.8m²
Second floor area: 52.8m²
Total Floor Area (3-bed unit): 105.6m²



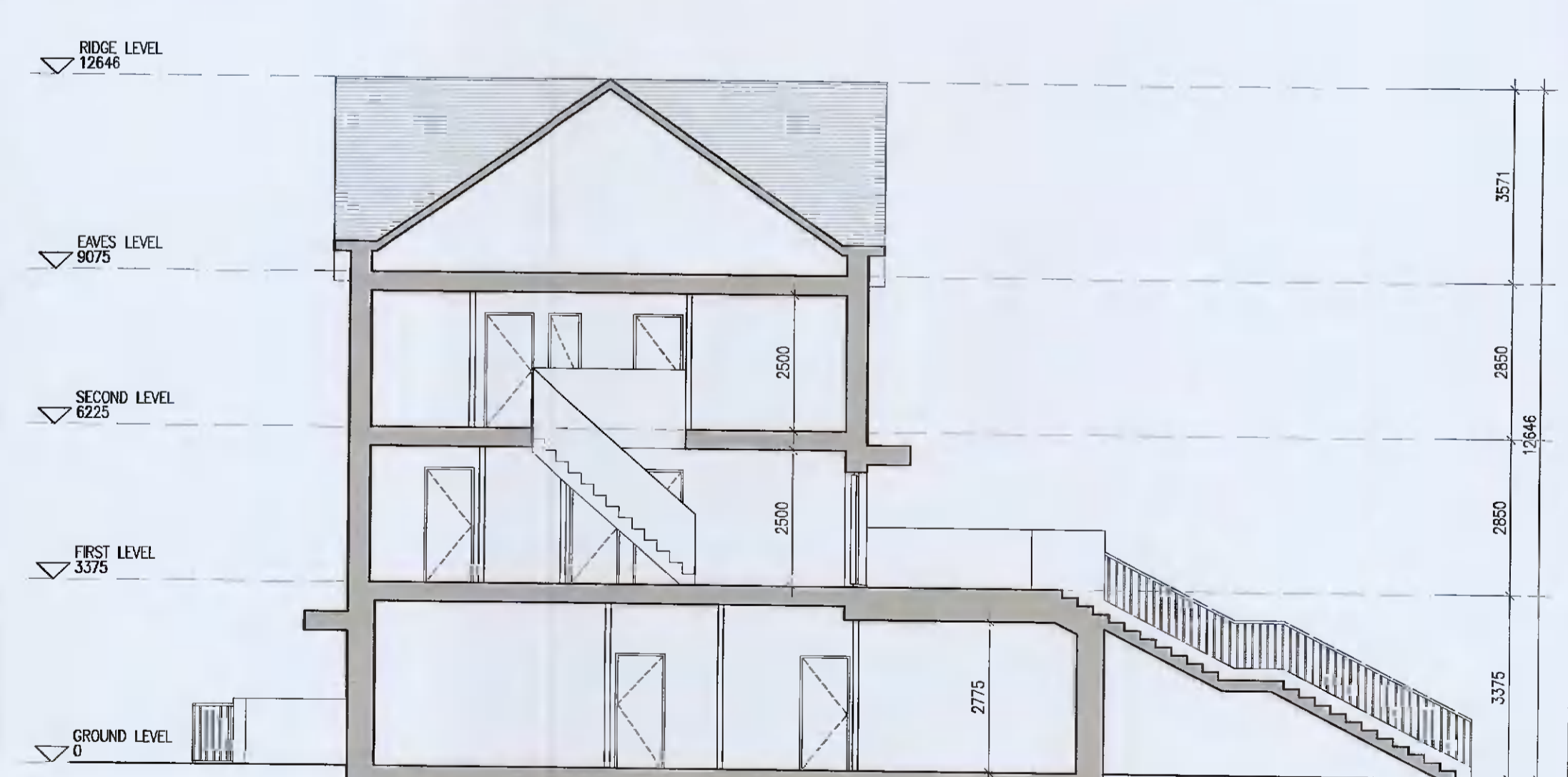
05 Rear Elevation
P-206 1:100BA1



06 Gable Elevation
P-206 1:100BA1



07 Front Elevation
P-206 1:100BA1



08 Typical Section [A-A]
P-206 1:100BA1

Notes

- Copyright Reserved
- Work to ground dimensions only. Do not scale drawing.
- The contractor is responsible for checking all levels and dimensions on site and shall refer all discrepancies to the Architect.
- Where appropriate, for details of i.e. structure, or mechanical and electrical details, see Engineers drawings.
- Proprietary items shall be fixed in strict accordance with manufacturers instructions.
- Stores of proprietary items shall be checked with manufacturer.
- The contractor shall be responsible for the coordination of structure, finishes and services.

No.	Date	Revision	Initials
01	12.04.2021	Preliminary Issue for comment	EKD
02	20.05.2021	ISSUED FOR PLANNING	EKD

DUPLEX TYPE E3

Project: Aderrig Phase 2 Adamstown SDZ Residential Development

Drawing Title: Duplex Type E3 (end-terrace) Handed - Plans, Sections, Elevations

Drawing No: 6259-P-206

Scale: 1:100@A1 Rev: 02 Drawn: EKD Date: 12.04.2021

Project: 6-7 HARPCOURT TERRACE, DUBLIN 2, IRELAND
T: +353-1-618 2400 F: +353-1-676 7885
www.bkd.ie

bkdarchitects
BURKE-KENNEDY DOYLE