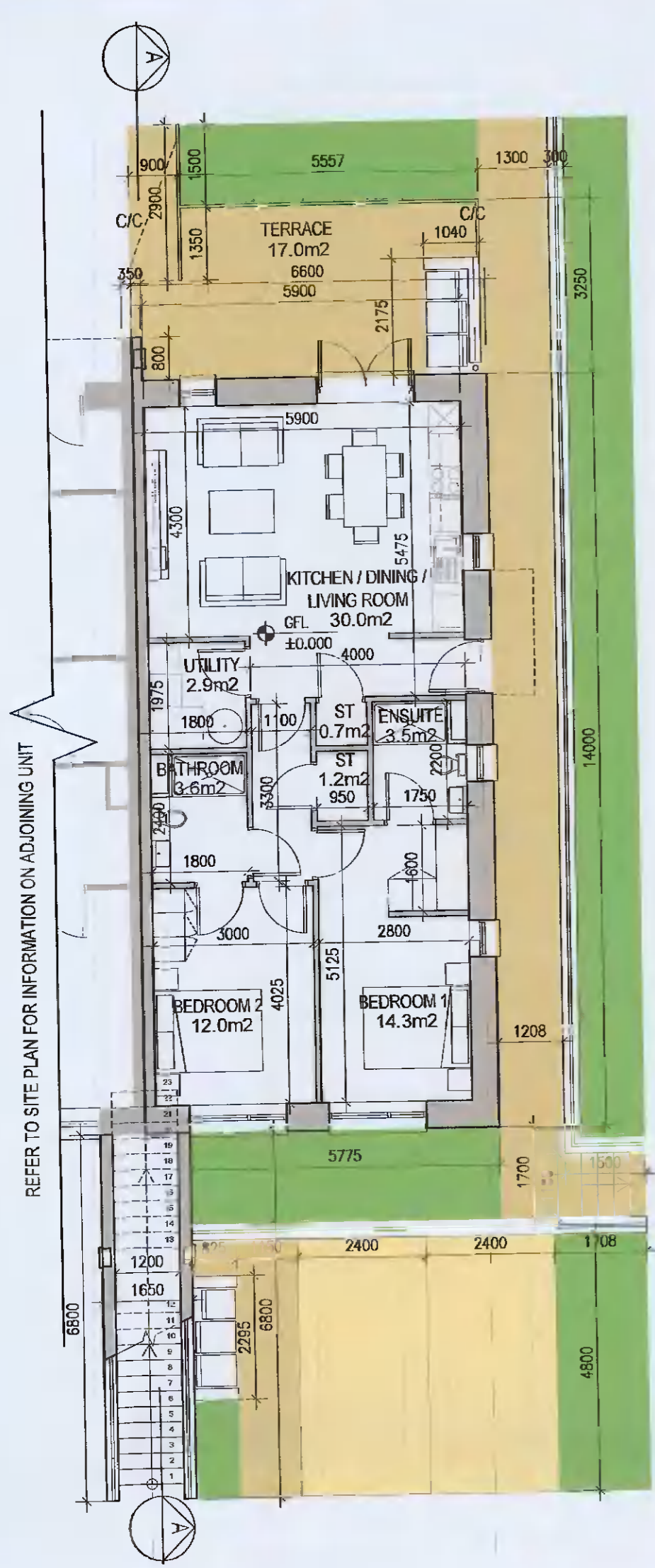
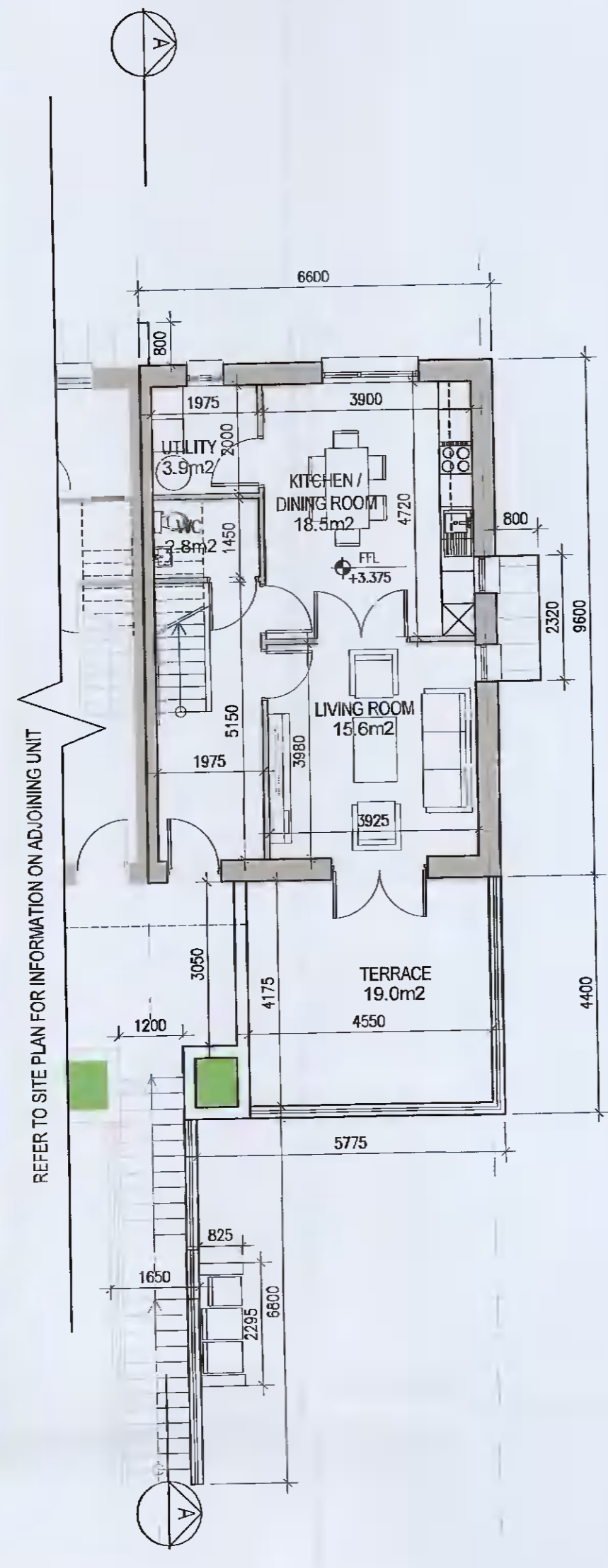


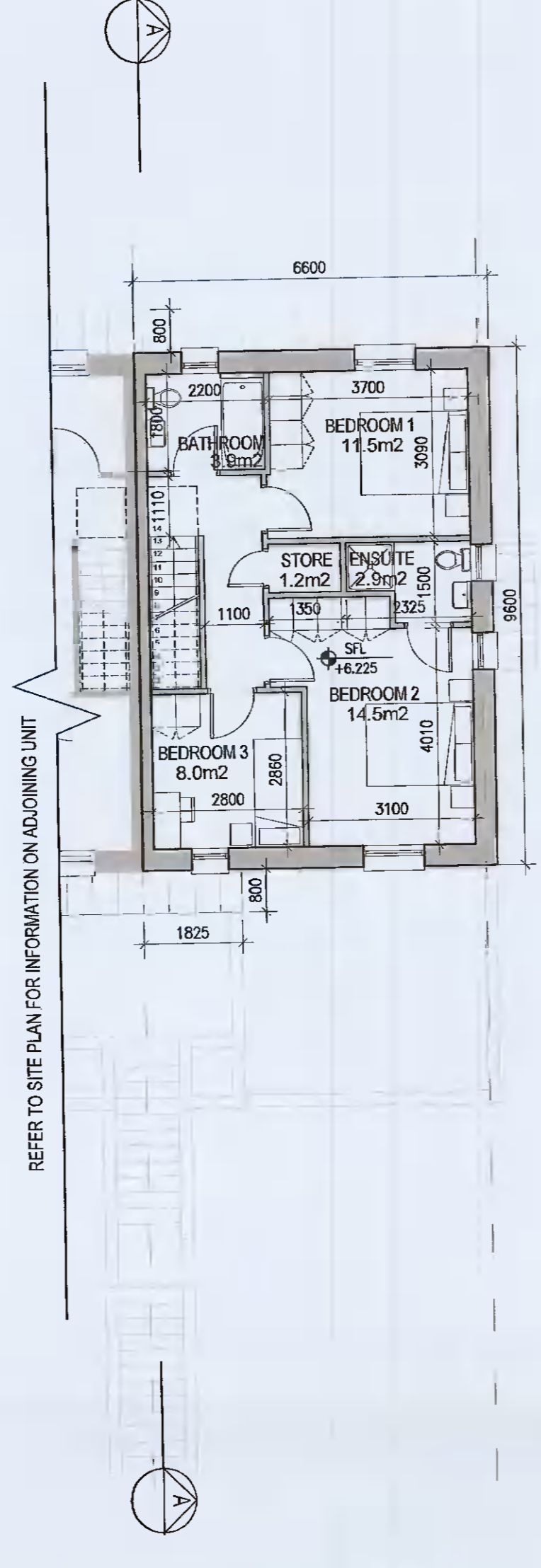
DUPLEX TYPE E3



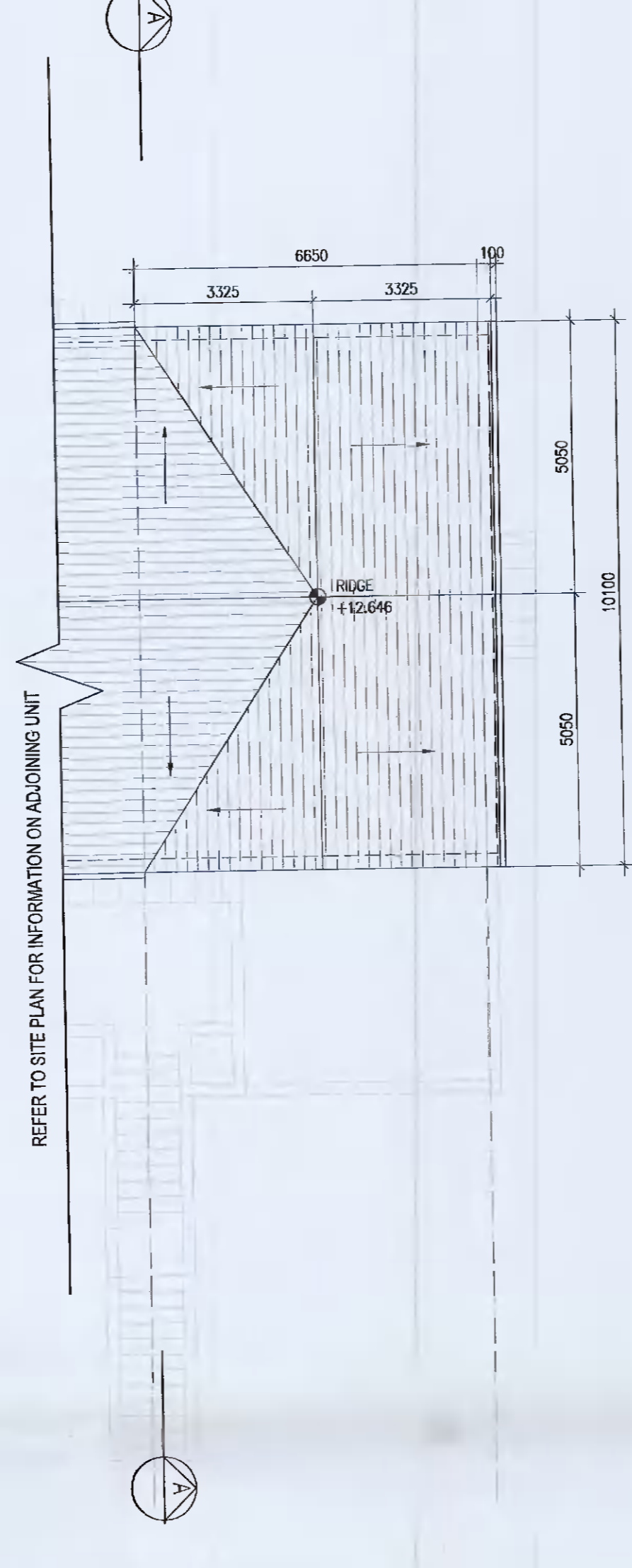
01 Ground Floor Plan [E3.0]
P-205 1:1000A1



02 First Floor Plan [E3.1]
P-205 1:1000A1



03 Second Floor Plan [E3.1]
P-205 1:1000A1



04 Roof Floor Plan
P-205 1:1000A1

UNIT TYPE KEY

Unit Type: [E1] [X] [1]
Unit Level (Duplex only): [1]
Finishes/Roof (if variations occur)

FINISHES
Z- Plain white render
Y- Brick
X- Plain white render with grey brick areas
V/W- Plain white render with brick areas

DUPLEX- Relates to front & rear elevations
HOUSES- Relates to front elevation (*)

ROOF FORM
A1V- Asymmetrical roof
D1V- Gable roof with hip roof intersection
D1W- Gable roof

Note: refer to site layout (6259-P-003) for location of unit types and unit type drawings (6259-P-100/ 200 series) for details
*A2, an exception, relates to the rear elevation

EXTERNAL FINISHES

WALLS: PAINTED SAND / CEMENT RENDER OR PROPRIETARY PRECOLOURED RENDER FINISH SELECTED BRICKWORK WHERE INDICATED ON DRAWINGS

WINDOWS: SELECTED PROPRIETARY DOUBLE / TRIPLE GLAZED WINDOW SYSTEM WITH FRAMES TO APPROVED COLOUR OBTAINED FROM BATHROOMS AND EN-SUITES.

DOORS: SELECTED PROPRIETARY DOORS AND GLAZED SIDE SCREENS TO APPROVED COLOUR.

RAINWATER GOODS: uPVC OR POWDER COATED METAL GUTTERS AND RAINWATER PIPES TO SELECTED COLOUR.

MAIN ROOF: CONCRETE ROOF TILES IN SELECTED COLOUR.

LOW LEVEL PROJECTION: ZINC CANOPY TO ENTRANCE OF UNITS

OTHER ITEMS: uPVC OR POWDER COATED METAL FASCIAS, SOFFITS AND BARGE BOARDS PAINTED MILDSTEEL RAILINGS AND BALLSTRADES



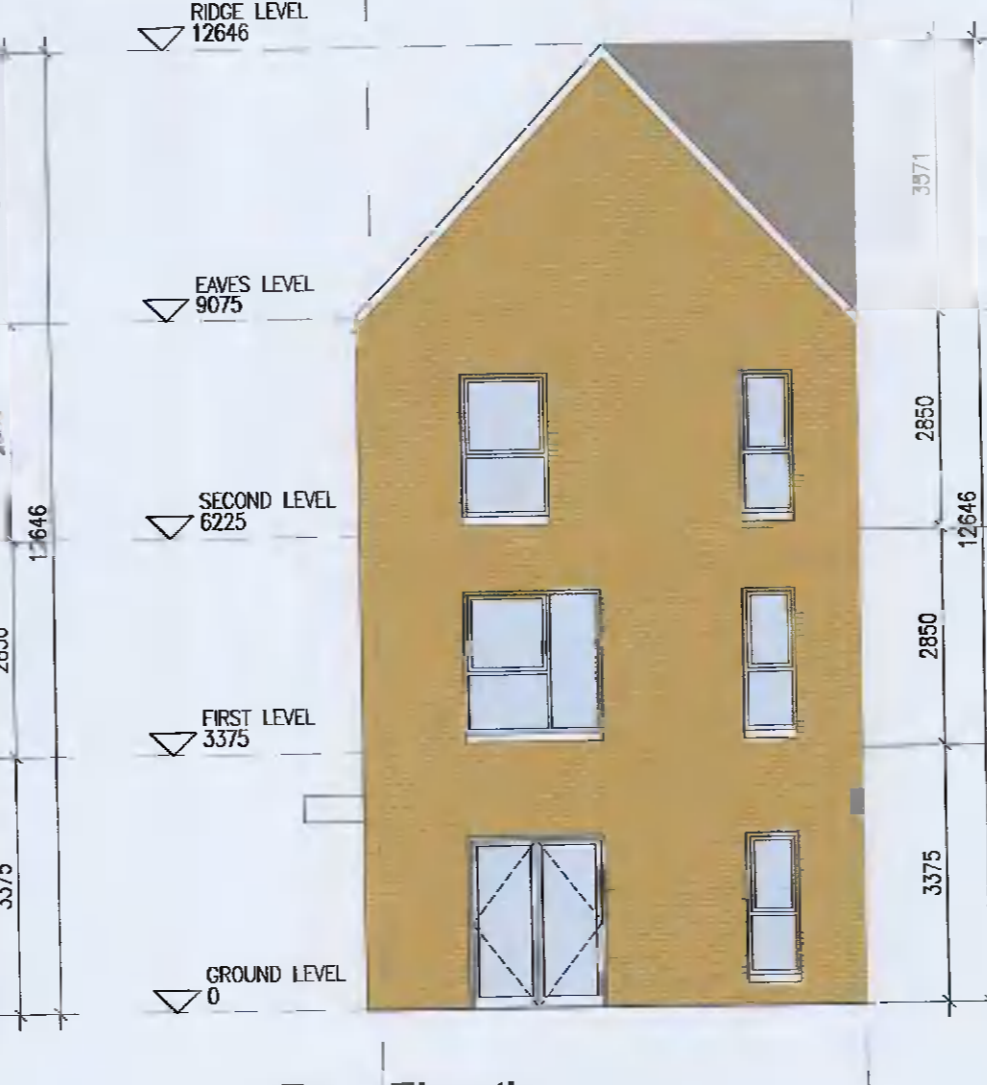
DUPLEX TYPE E3.0	Total Floor Area (2-bed unit):	79.2m ²
DUPLEX TYPE E3.1	First floor area	52.8m ²
	Second floor area	52.8m ²
	Total Floor Area (3-bed unit):	105.6m ²



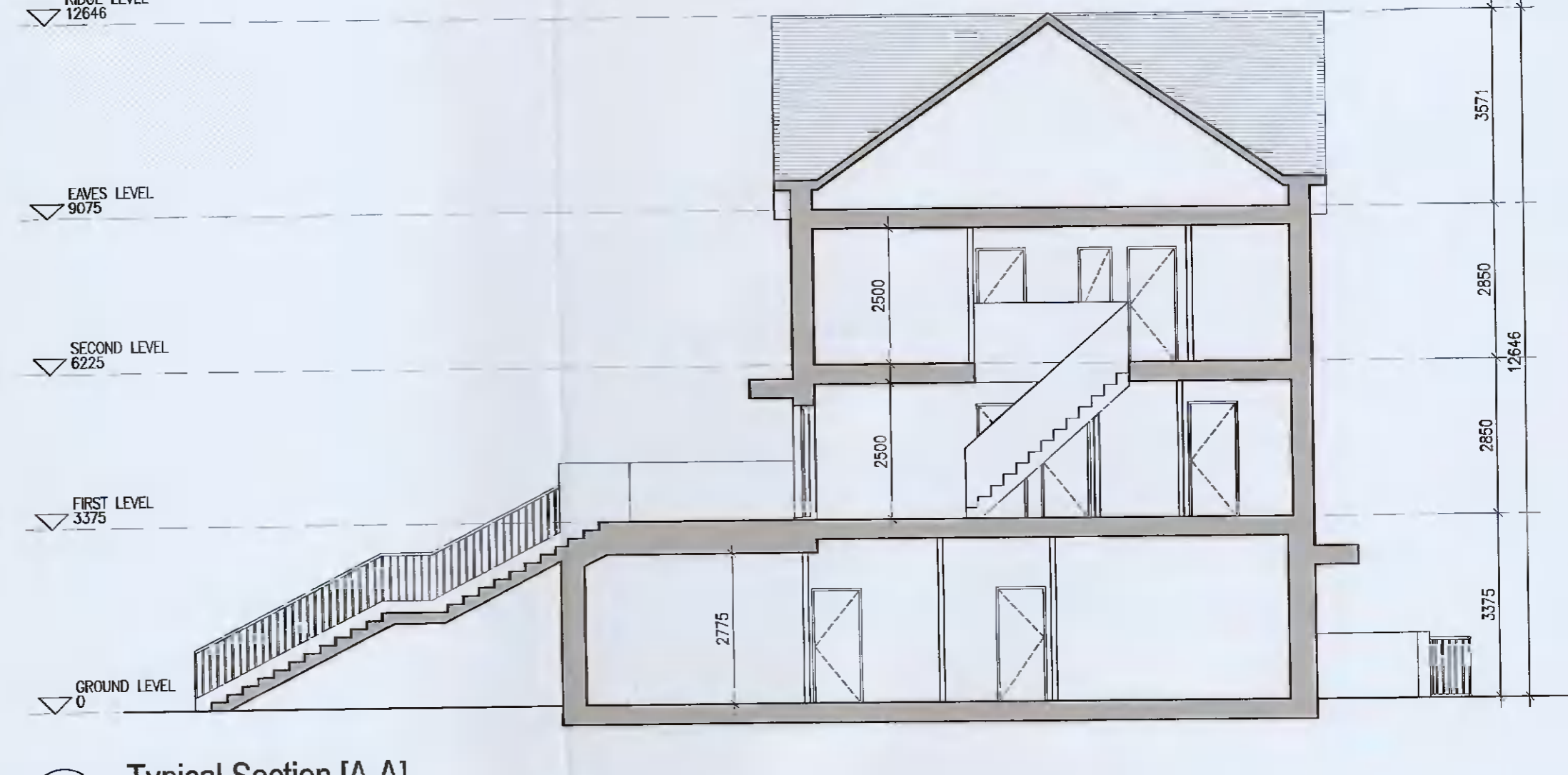
05 Rear Elevation
P-205 1:1000A1



06 Gable Elevation
P-205 1:1000A1



07 Front Elevation
P-205 1:1000A1



08 Typical Section [A-A]
P-205 1:1000A1

Notes

- Copyright Reserved
- Work to figured dimensions only. Do not scale drawing
- The contractor is responsible for checking all levels and dimensions on site and shall refer all discrepancies to the Architect
- Where appropriate, for details of e.c. structure, or mechanical and electrical details, see Engineers drawings
- Proprietary items shall be fixed in strict accordance with manufacturers instructions.
- Sizes of proprietary items shall be checked with manufacturers
- The contractor shall be responsible for the coordination of structure, finishes and services.

Issue Status	Progress	Application	Disability Cert	Tender	Construction	As Built	Information Only

No.	Date	Revision	Initials
01	12.04.2021	Preliminary issue for comment	BKD
02	20.05.2021	ISSUED FOR PLANNING	BKD

Aderrig Phase 2 Adamstown SDZ Residential Development

Drawing Title: Duplex Type E3 (end-terrace) Non-handed - Plans, Sections, Elevations
Drawing No: 6259-P-205
Scale: 1:100@A1 Rev: 02 Drawn: BKD Date: 12.04.2021

DUPLEX TYPE E3

6-7 HARCOURT TERRACE, DUBLIN 2, IRELAND
t +353-1-616 2400 f +353-1-676 7365
e architecture@bkdi.ie
www.bkdi.ie

bkd architects
BURKE-KENNEDY DOYLE