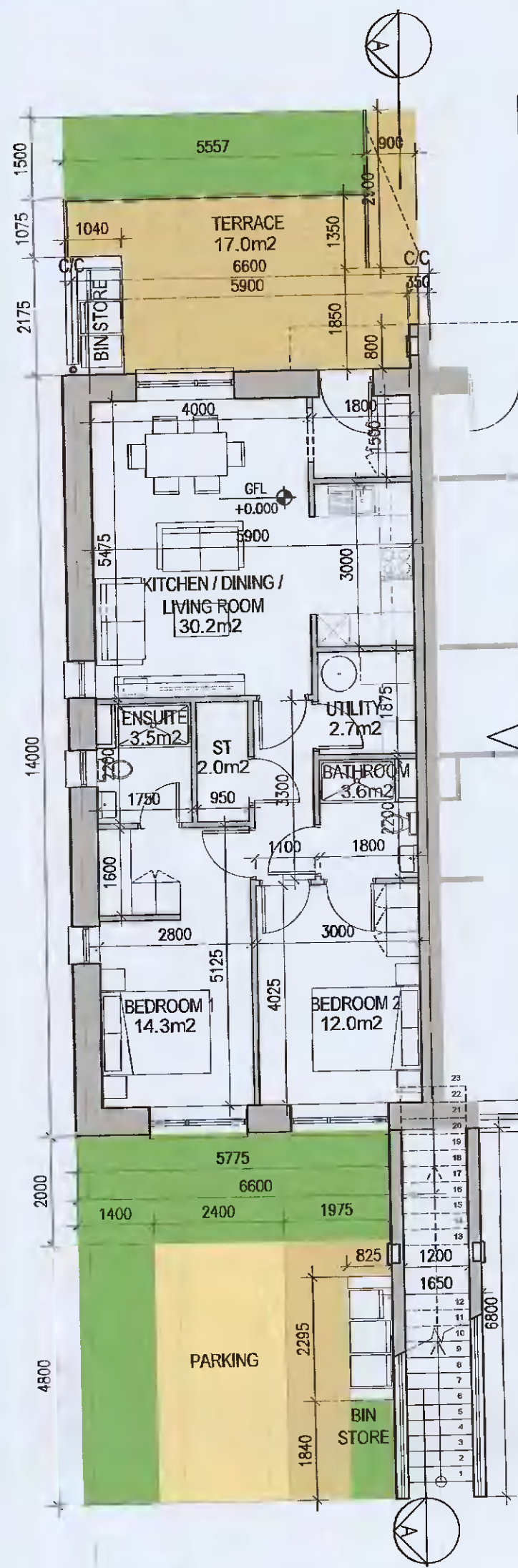
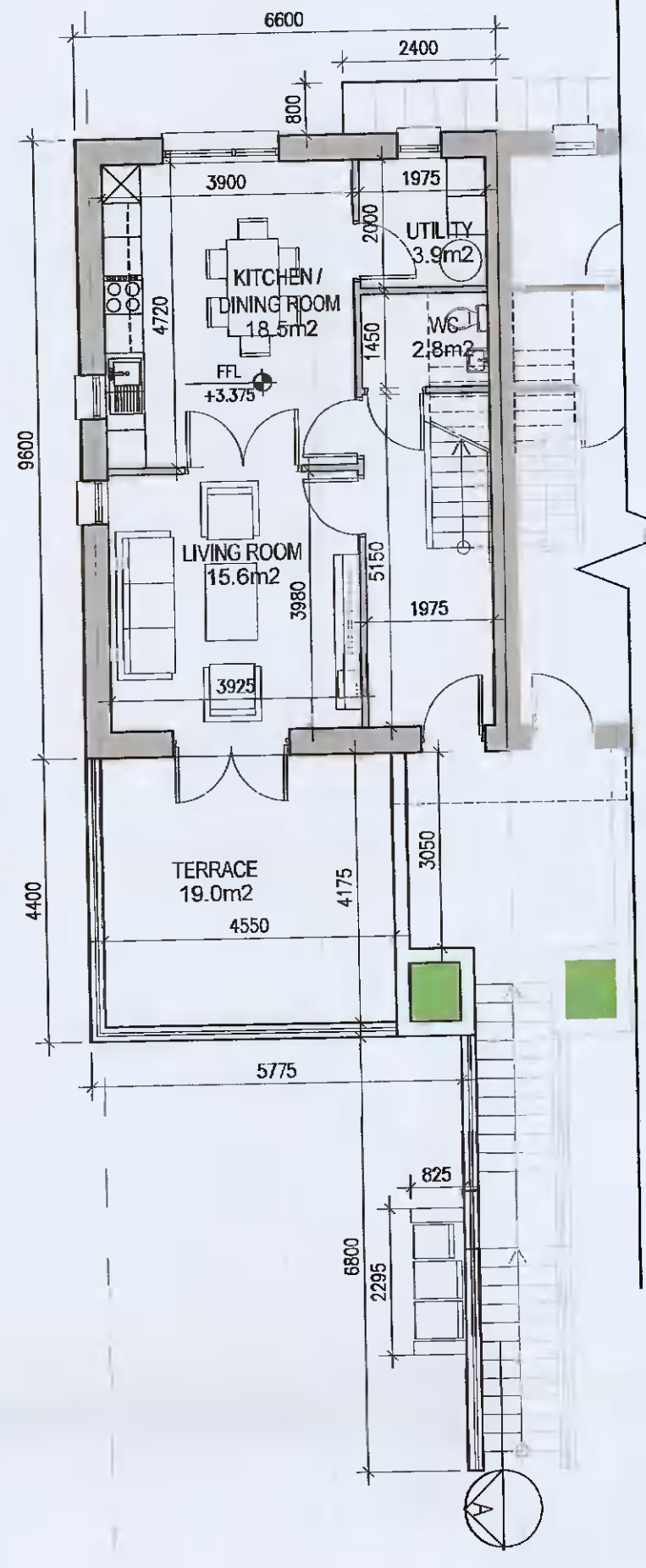


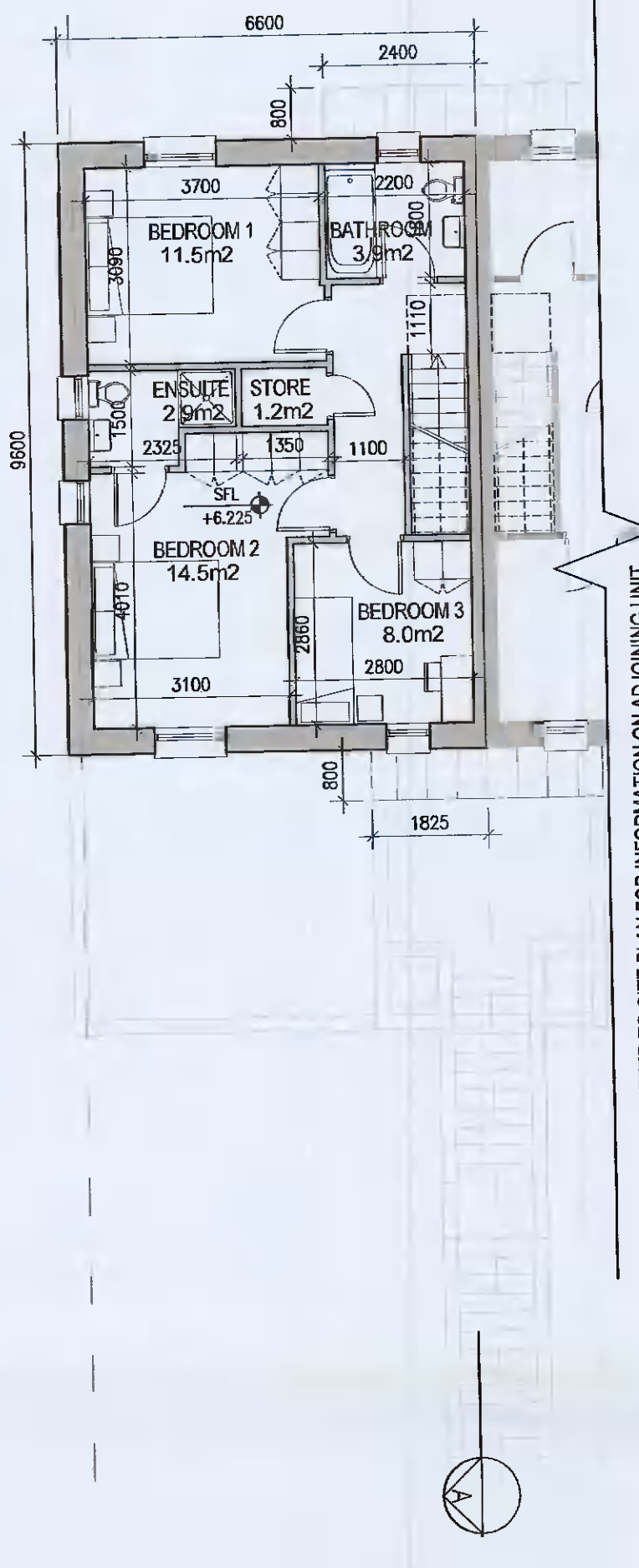
DUPLEX TYPE E2 [HANDED]



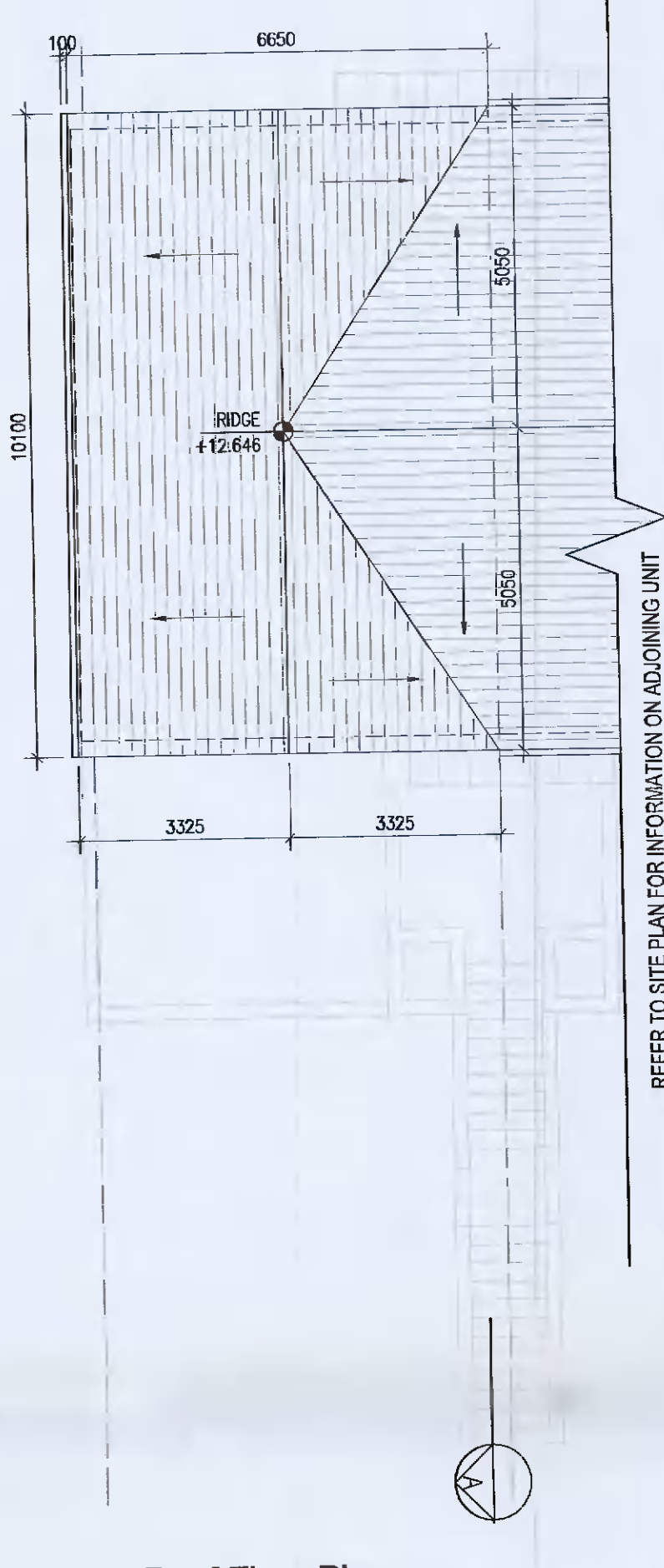
01 Ground Floor Plan [E2.0]
1:100@A1



02 First Floor Plan [E2.1]
1:100@A1



03 Second Floor Plan [E2.1]
1:100@A1



04 Roof Floor Plan
1:100@A1

UNIT TYPE KEY

Unit Type Unit Level (Duplex only)

[E1] [X] [1]

Finishes/Roof (if variations occur)

FINISHES
Z- Plain white render
Y- Brick
X- Plain white render with grey brick areas
V/W- Plain white render with brick areas

DUPLEX- Relates to front & rear elevations
HOUSES- Relates to front elevation (*)

ROOF FORM
A1Y- Asymmetrical roof
D1V- Gable roof with hip roof intersection
D1W- Gable roof

Note: refer to site layout (6259-P-003) for location of unit types and unit type drawings (6259-P-100/ 200 series) for details

*A2, an exception, relates to the rear elevation

EXTERNAL FINISHES

WALLS: PAINTED SAND / CEMENT RENDER OR PROPRIETARY PRECOLOURED RENDER FINISH SELECTED BRICKWORK WHERE INDICATED ON DRAWINGS

WINDOWS: SELECTED PROPRIETARY DOUBLE / TRIPLE GLAZED WINDOW SYSTEM WITH FRAMES TO APPROVED COLOUR OBSURED GLAZING TO BATHROOMS AND EN-SUITES.

DOORS: SELECTED PROPRIETARY DOORS AND GLAZED SIDE SCREENS TO APPROVED COLOUR.

RAINWATER GOODS: uPVC OR POWDER COATED METAL GUTTERS AND RAINWATER PIPES TO SELECTED COLOUR.

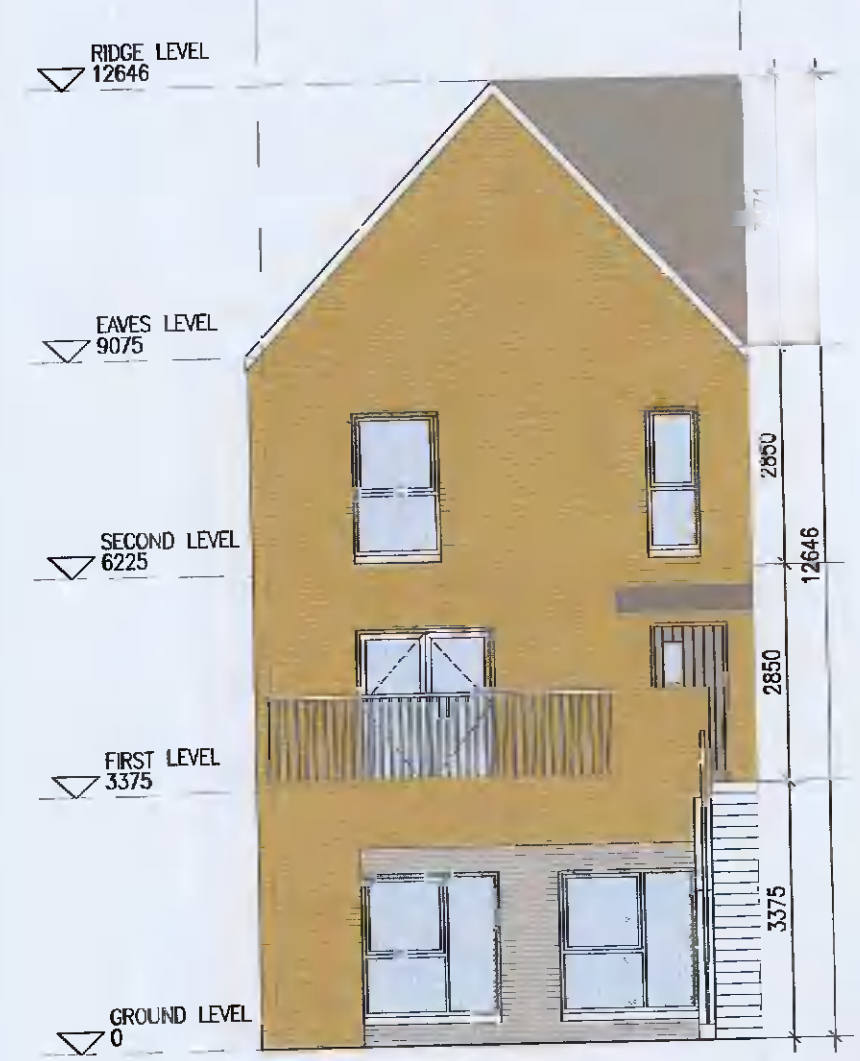
MAIN ROOF: CONCRETE ROOF TILES IN SELECTED COLOUR.

LOW LEVEL PROJECTION: ZINC CANOPY TO ENTRANCE OF UNITS

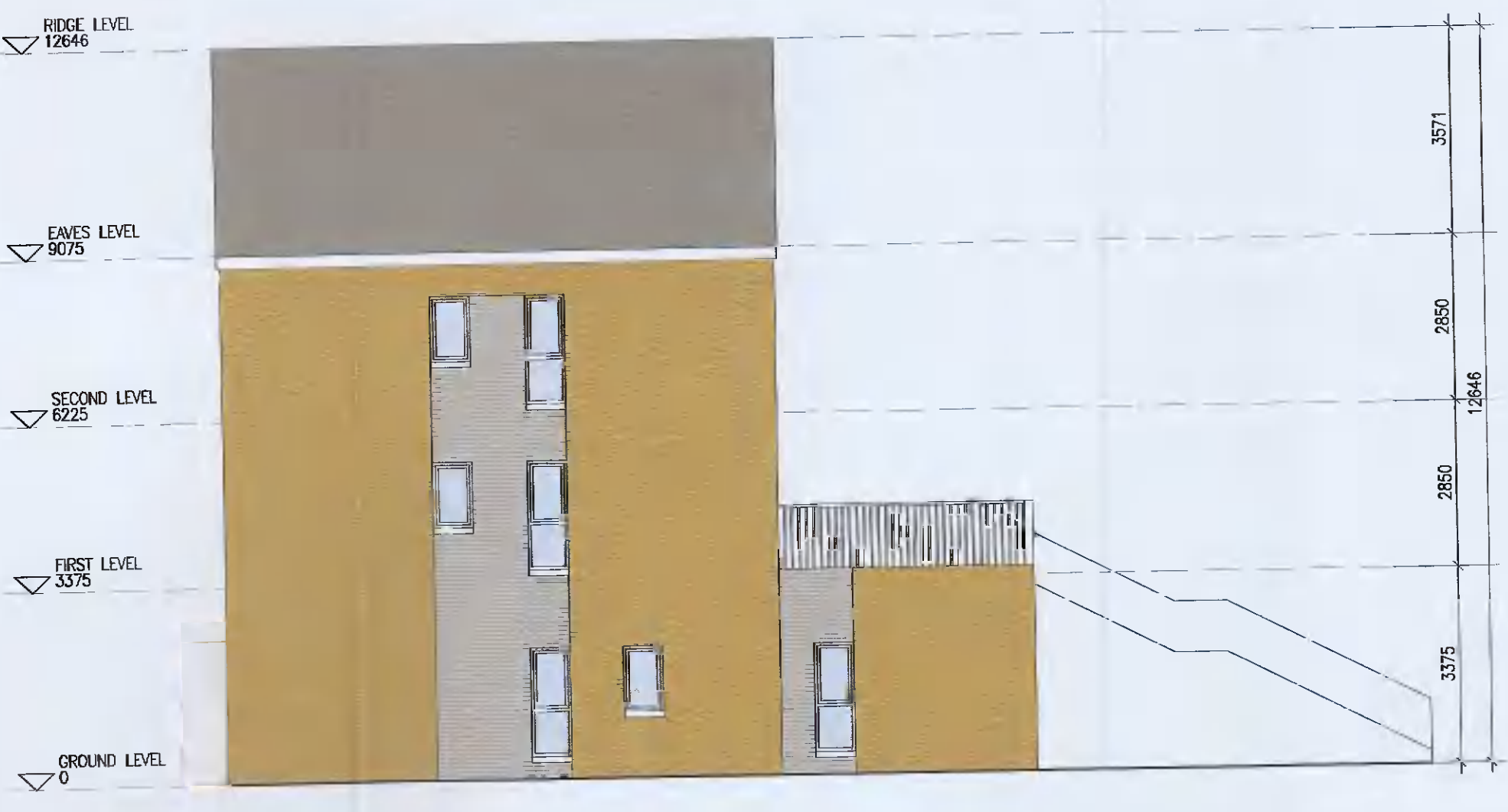
OTHER ITEMS: uPVC OR POWDER COATED METAL FASCIAS, SOFFITS AND BARGE BOARDS PAINTED MILDSTEEL RAILINGS AND BALUSTRADES



DUPLEX TYPE E2.0	Total Floor Area (2-bed unit):	79.2m²
DUPLEX TYPE E2.1	First floor area	52.8m ²
	Second floor area	52.8m ²
	Total Floor Area (3-bed unit):	105.6m²



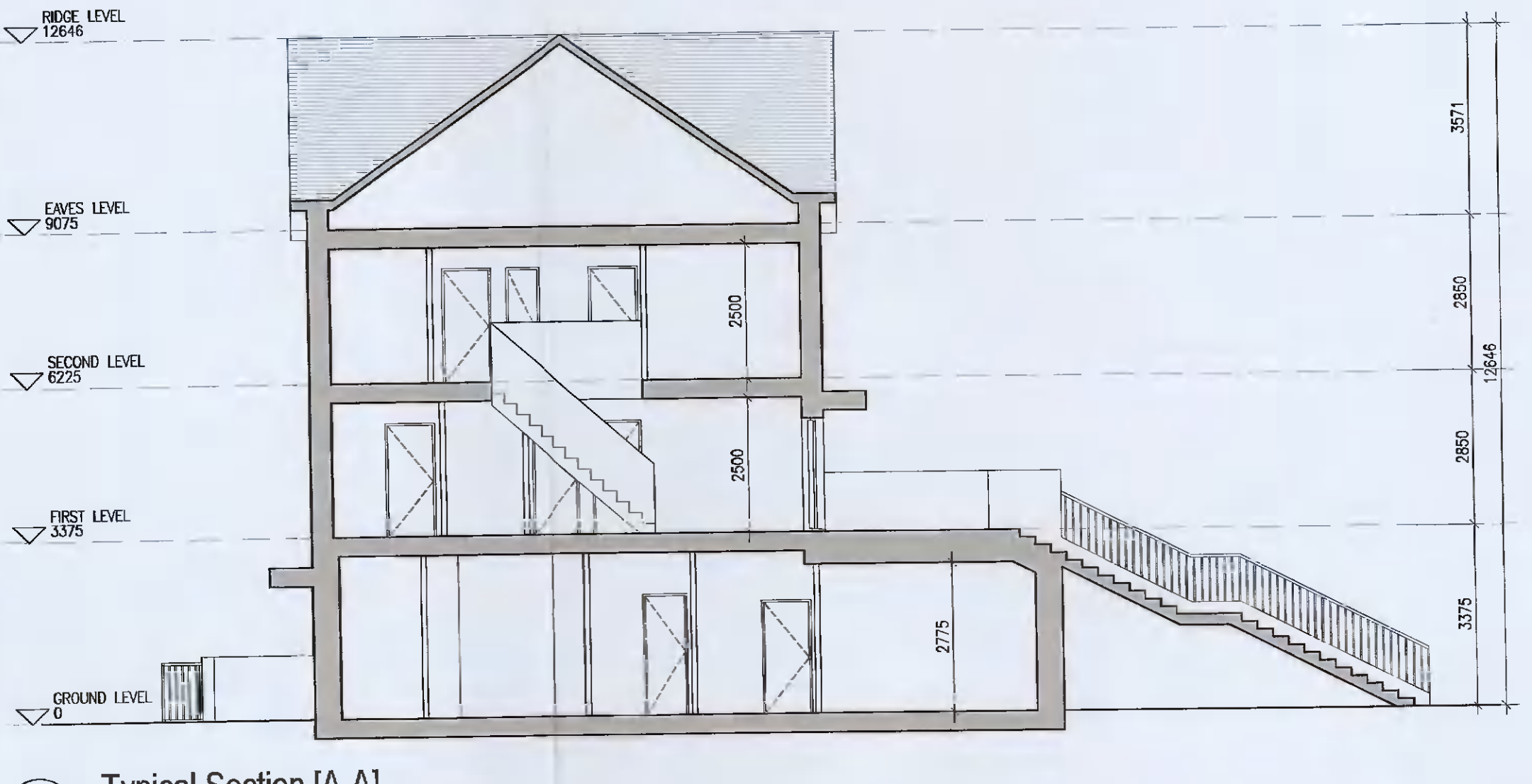
05 Rear Elevation
1:100@A1



06 Gable Elevation
1:100@A1



07 Front Elevation
1:100@A1



08 Typical Section [A-A]
1:100@A1

- Notes**
- Copyright Reserved
 - Work to agreed dimensions only. Do not scale drawings
 - The contractor is responsible for checking all levels and dimensions on site and shall refer all discrepancies to the Architect
 - Where appropriate, for details of r.c. structure, or mechanical and electrical details, see Engineers drawings
 - Proprietary items shall be fixed in strict accordance with manufacturers instructions
 - Sizes of proprietary items shall be checked with manufacturer
 - The contractor shall be responsible for the coordination of structure, finishes and services.

Issue Status	Progress	Fire Cert	Disability Cert	Tender	Construction	As Built	Information Only
Progress							
Planning Application							
Fire Cert							
Disability Cert							
Tender							
Construction							
As Built							
Information Only							

No.	Date	Revision	Initials
01	12.04.2021	ISSUED FOR PLANNING	BKD
02	20.05.2021	ISSUED FOR PLANNING	BKD

Project	Aderrig Phase 2 Adamstown SDZ Residential Development		
Drawing Title	Duplex Type E2 (end-terrace) Handed - Plans, Sections, Elevations		
Drawing No	6259-P-204		
Scale	1:100@A1	Rev	02
Drawn	BKD	Date	12.04.2021

DUPLEX TYPE E2

6-7 HARCOURT TERRACE, DUBLIN 2, IRELAND
t +353-1-618 2400 f +353-1-676 7335
e architecture@bkd.ie
www.bkd.ie

