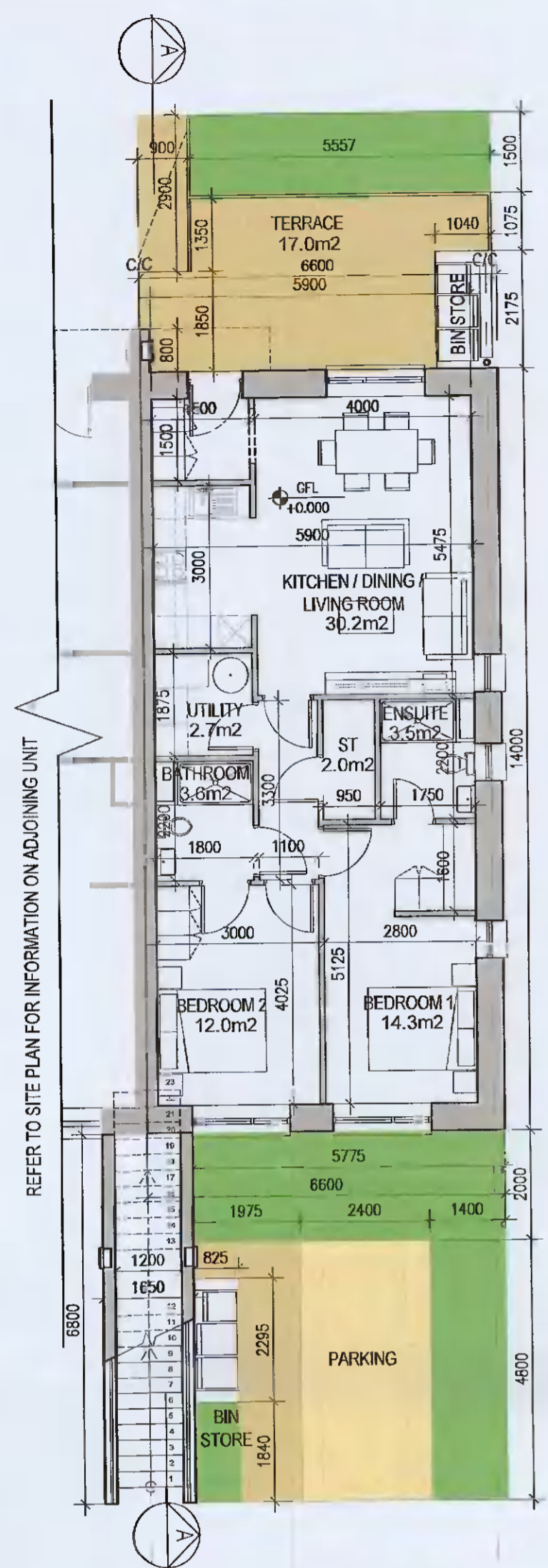
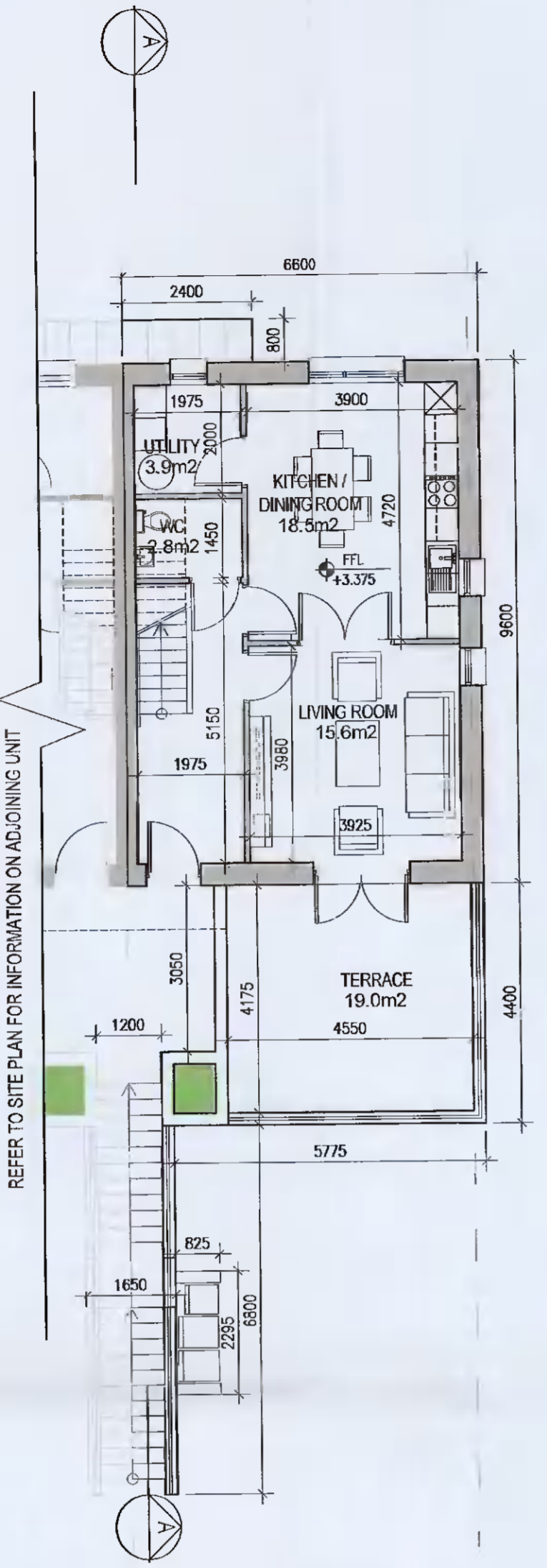


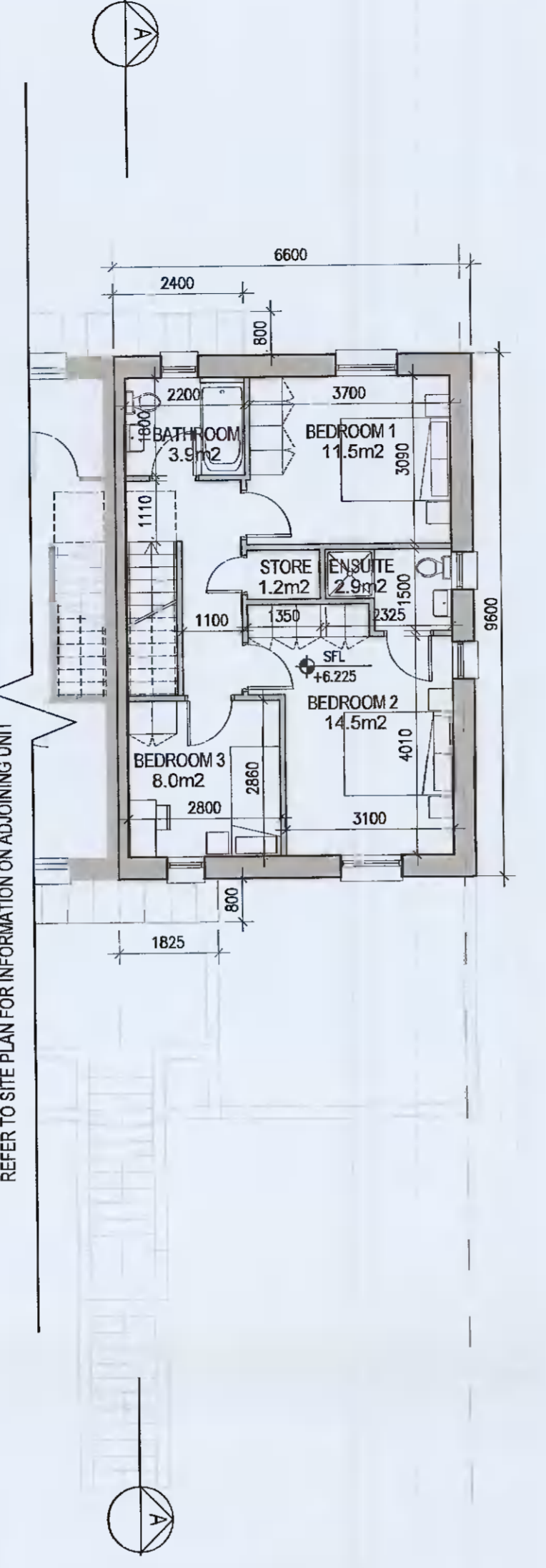
DUPLEX TYPE E2



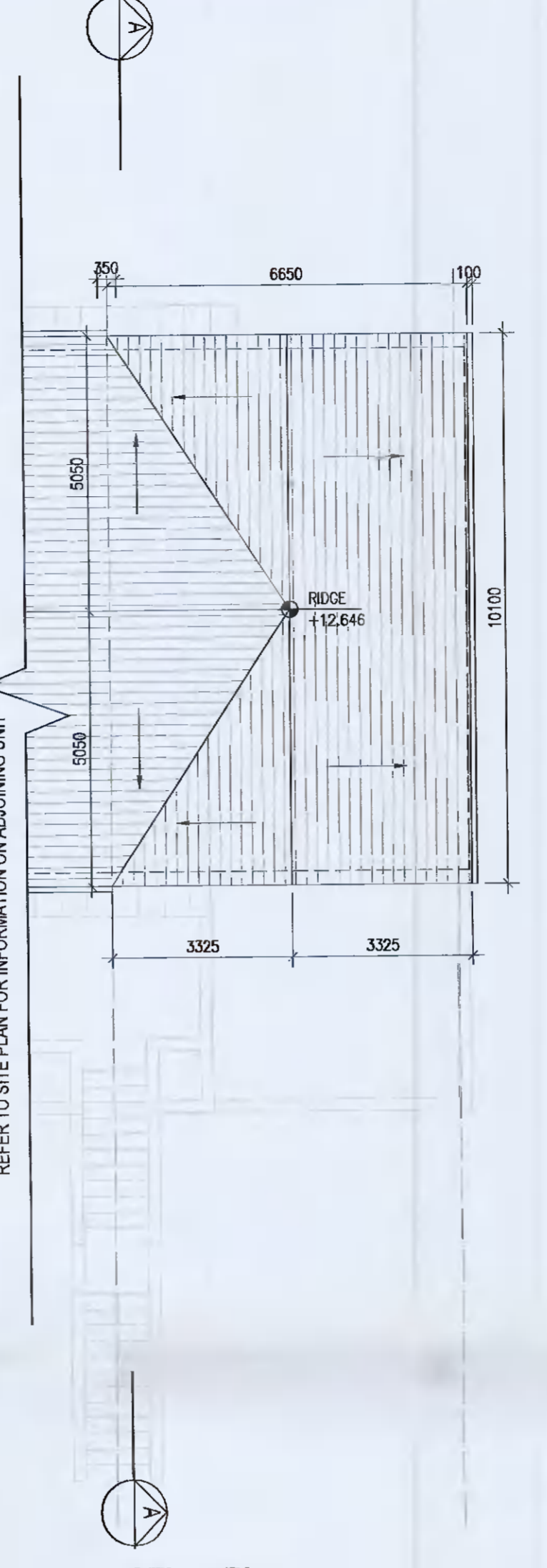
01 Ground Floor Plan [E2.0]
1:100@A1



02 First Floor Plan [E2.1]
1:100@A1



03 Second Floor Plan [E2.1]
1:100@A1



04 Roof Floor Plan
1:100@A1

UNIT TYPE KEY

Unit Type Unit Level (Duplex only)

F1 X 1

Finishes/Roof (if variations occur)

FINISHES
Z- Plain white render
Y- Brick
X- Plain white render with grey brick areas
V/W- Plain white render with brick areas

DUPLEX- Relates to front & rear elevations
HOUSES- Relates to front elevation (*)

ROOF FORM
A1Y- Asymmetrical roof
D1V- Gable roof with hip roof intersection
D1W- Gable roof

Note: refer to site layout (6259-P-003) for location of unit types and unit type drawings (6259-P-100/ 200 series) for details
*A2, an exception, relates to the rear elevation

EXTERNAL FINISHES

WALLS: PAINTED SAND / CEMENT RENDER OR PROPRIETARY PRECOLOURED RENDER FINISH SELECTED BRICKWORK WHERE INDICATED ON DRAWINGS

WINDOWS: SELECTED PROPRIETARY DOUBLE / TRIPLE GLAZED WINDOW SYSTEM WITH FRAMES TO APPROVED COLOUR OBTAINED TO BATHROOMS AND EN-SUITES.

DOORS: SELECTED PROPRIETARY DOORS AND GLAZED SIDE SCREENS TO APPROVED COLOUR.

RAINWATER GOODS: uPVC OR POWDER COATED METAL GUTTERS AND RAINWATER PIPES TO SELECTED COLOUR.

MAIN ROOF: CONCRETE ROOF TILES IN SELECTED COLOUR.

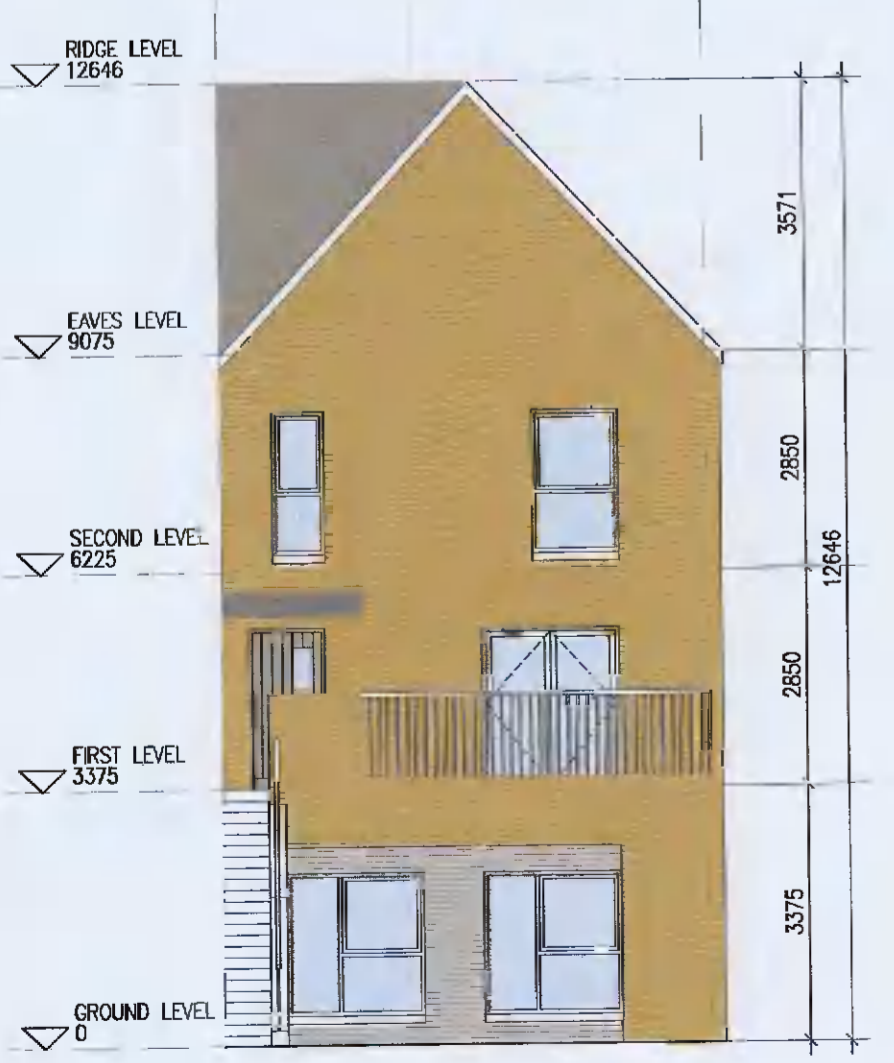
LOW LEVEL PROJECTION: ZINC CANOPY TO ENTRANCE OF UNITS

OTHER ITEMS: uPVC OR POWDER COATED METAL FASCIAS, SOFFITS AND BARGE BOARDS PAINTED MILDSTEEL RAILINGS AND BALUSTRADES



DUPLEX TYPE E2.0
Total Floor Area (2-bed unit): **79.2m²**

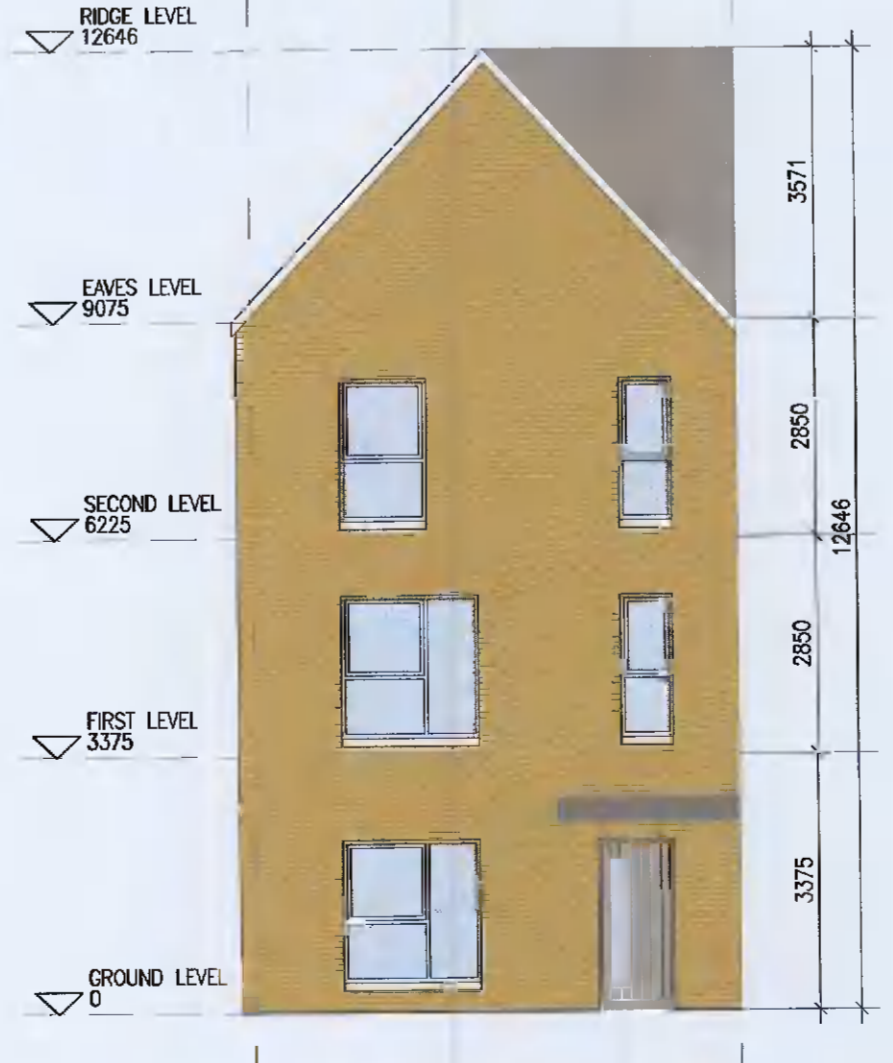
DUPLEX TYPE E2.1
First floor area: **52.8m²**
Second floor area: **52.8m²**
Total Floor Area (3-bed unit): **105.6m²**



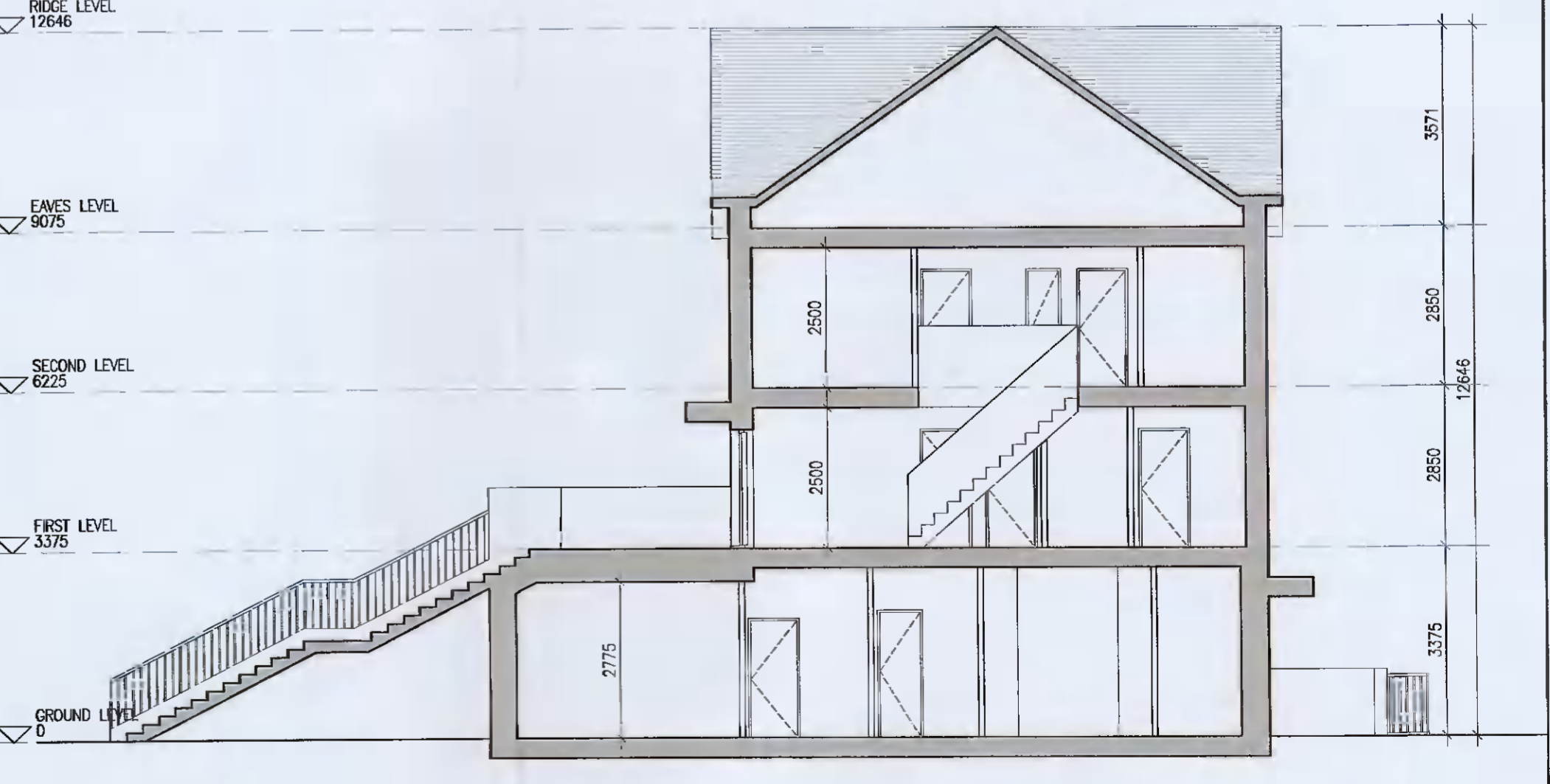
05 Rear Elevation
1:100@A1



06 Gable Elevation
1:100@A1



07 Front Elevation
1:100@A1



08 Typical Section [A-A]
1:100@A1

Notes

- Copyright Reserved
- Work to figured dimensions only. Do not scale drawing.
- The contractor is responsible for checking all levels and dimensions on site and shall refer all discrepancies to the Architect.
- Where appropriate, for details of i.e. structure, or mechanical and electrical details, see Engineers drawings.
- Proprietary items shall be fixed in strict accordance with manufacturers instructions.
- Slates of proprietary items shall be checked with manufacturer.
- The contractor shall be responsible for the coordination of structure, finishes and services.

Issue Status	No.	Date	Revision	Initials
Progress	01	12.04.2021	Preliminary Issue for comments	BKD
Planning Application	02	20.05.2021	ISSUED FOR PLANNING	BKD
Fire Cert				
Disability Cert				
Tender				
Construction				
As Built				

DUPLEX TYPE E2

Project: **Aderrig Phase 2 Adamstown SDZ Residential Development**

Drawing Title: **Duplex Type E2 (end-terrace) Non-handed - Plans, Sections, Elevations**

Drawing No: **6259-P-203**

Scale: **1:100@A1** Rev: **02** Drawn: **BKD** Date: **12.04.2021**

bkdarchitects
BURKE-KENNEDY DOYLE

6-7 HARCOURT TERRACE, DUBLIN 2, IRELAND
t: +353-1-616 9400 f: +353-1-676 2255
e: info@bkdarchitects.ie www.bkd.ie