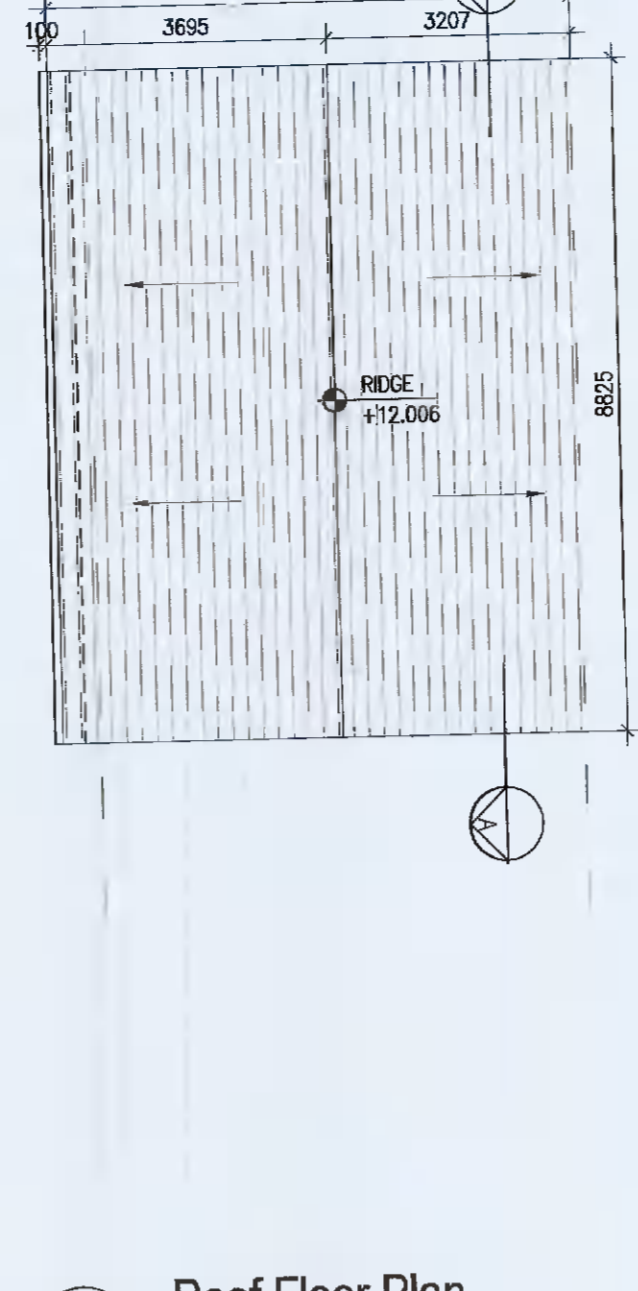
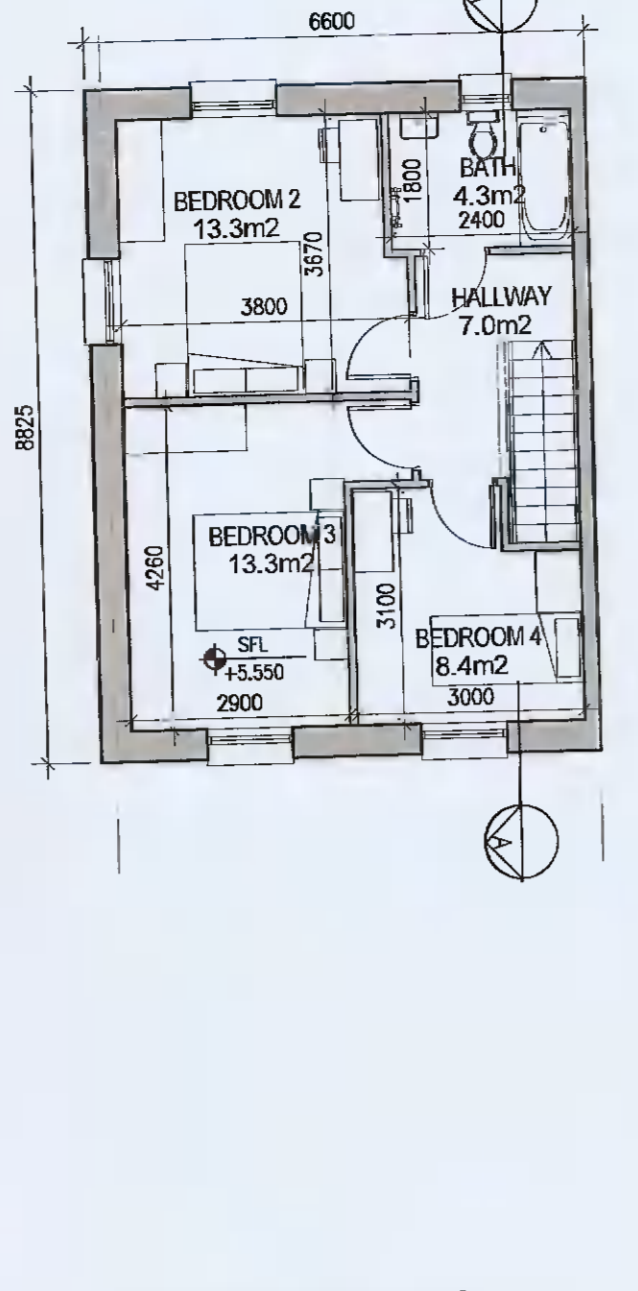
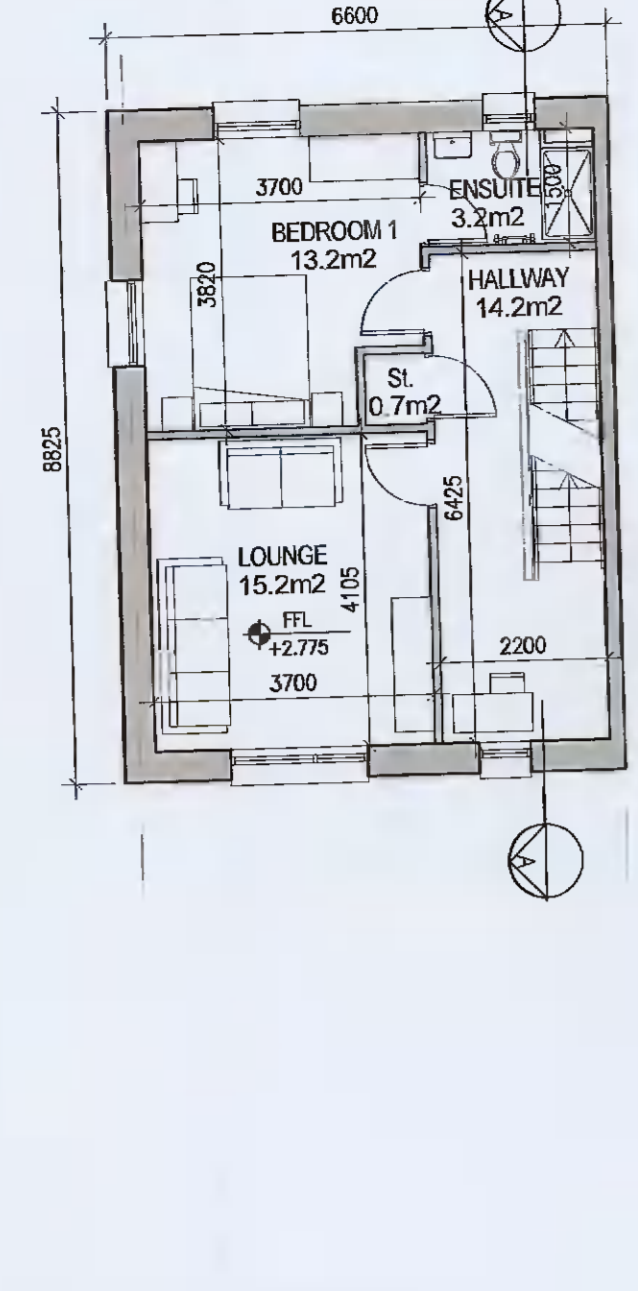
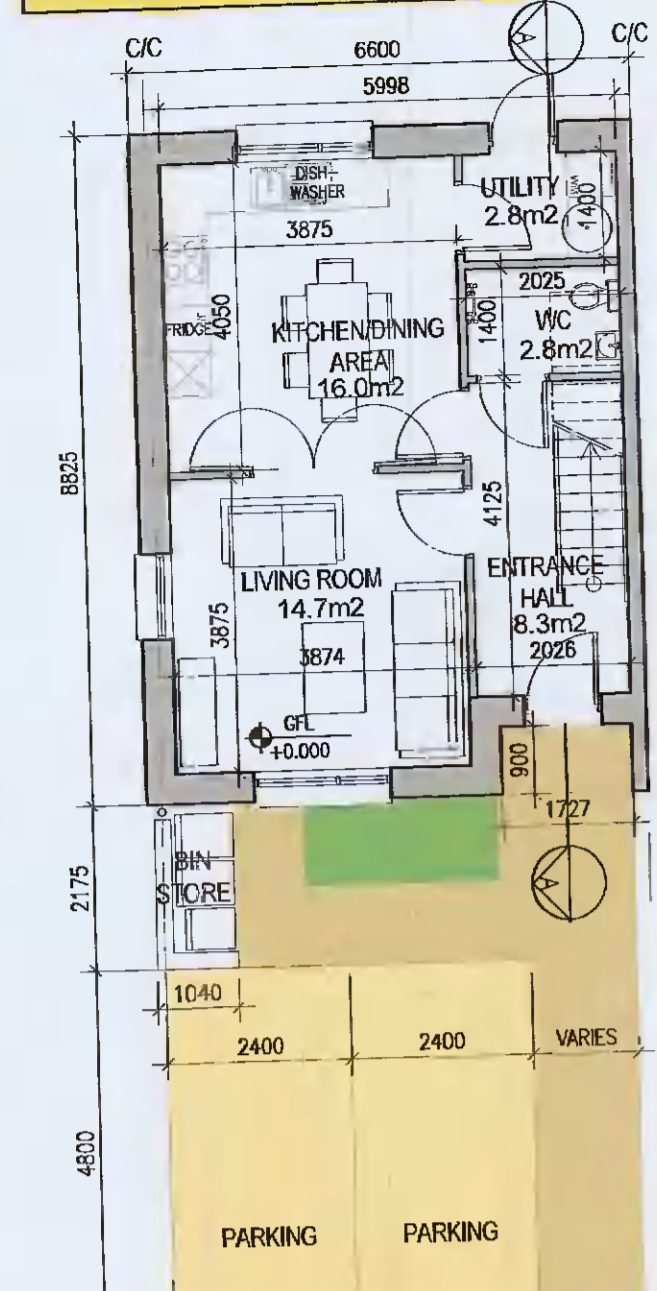
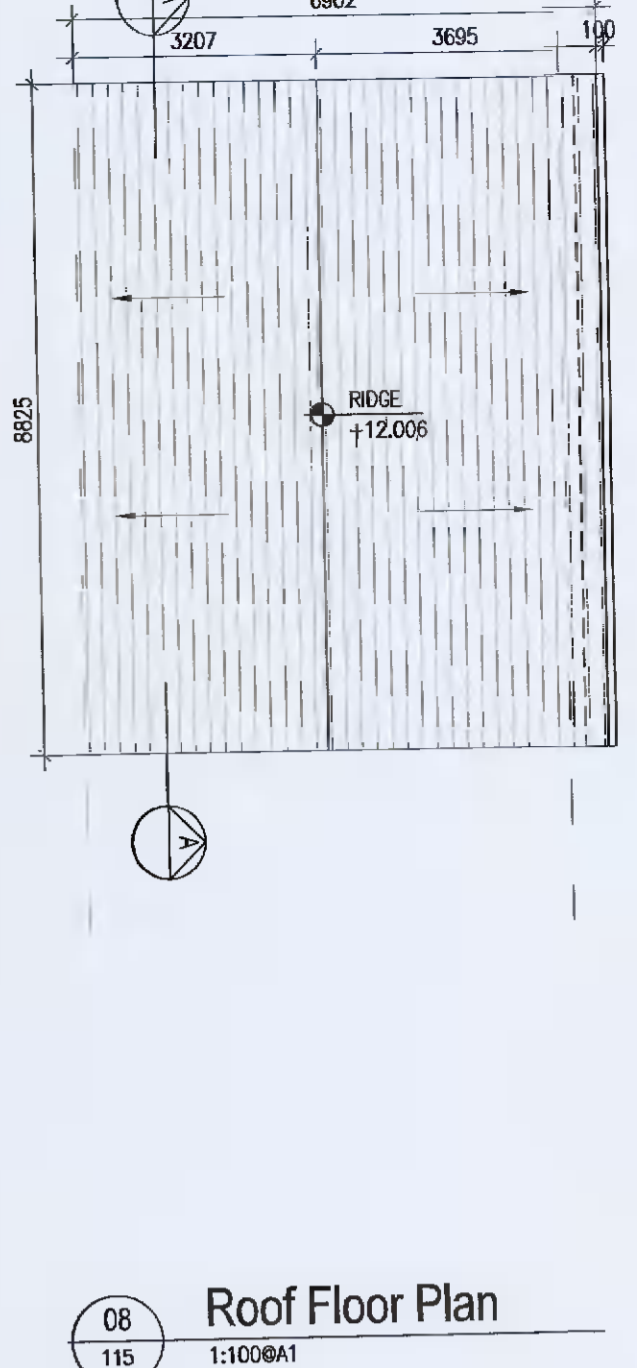
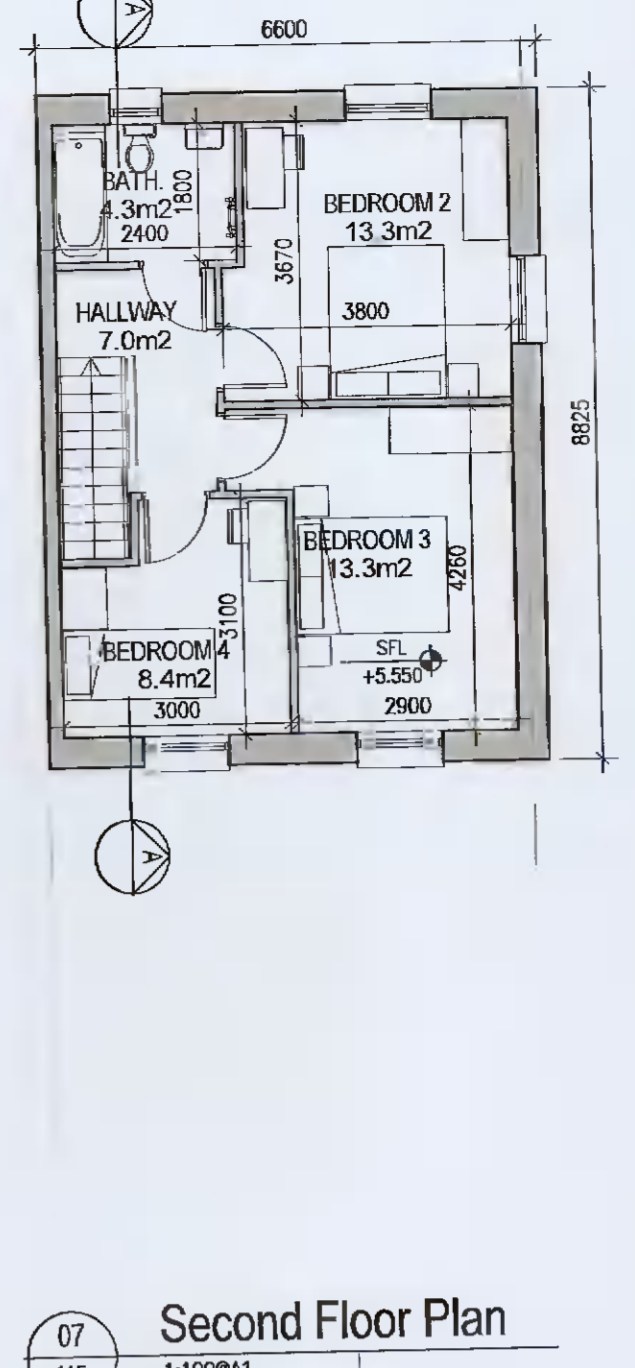
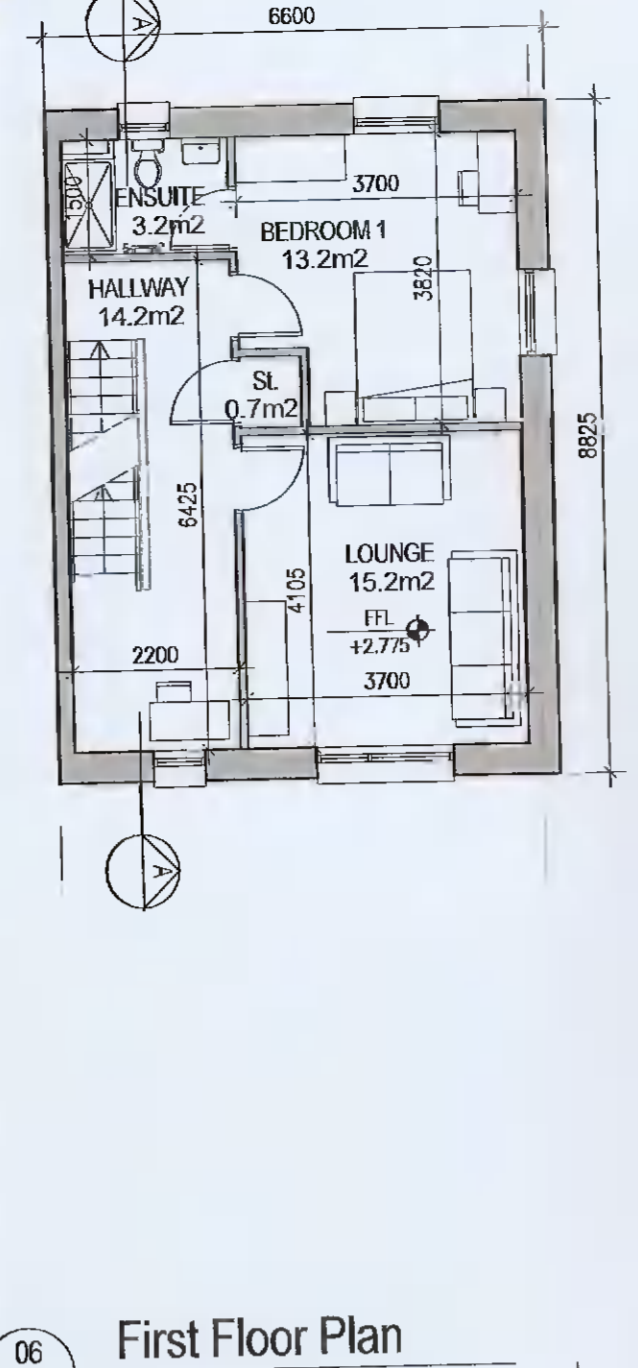
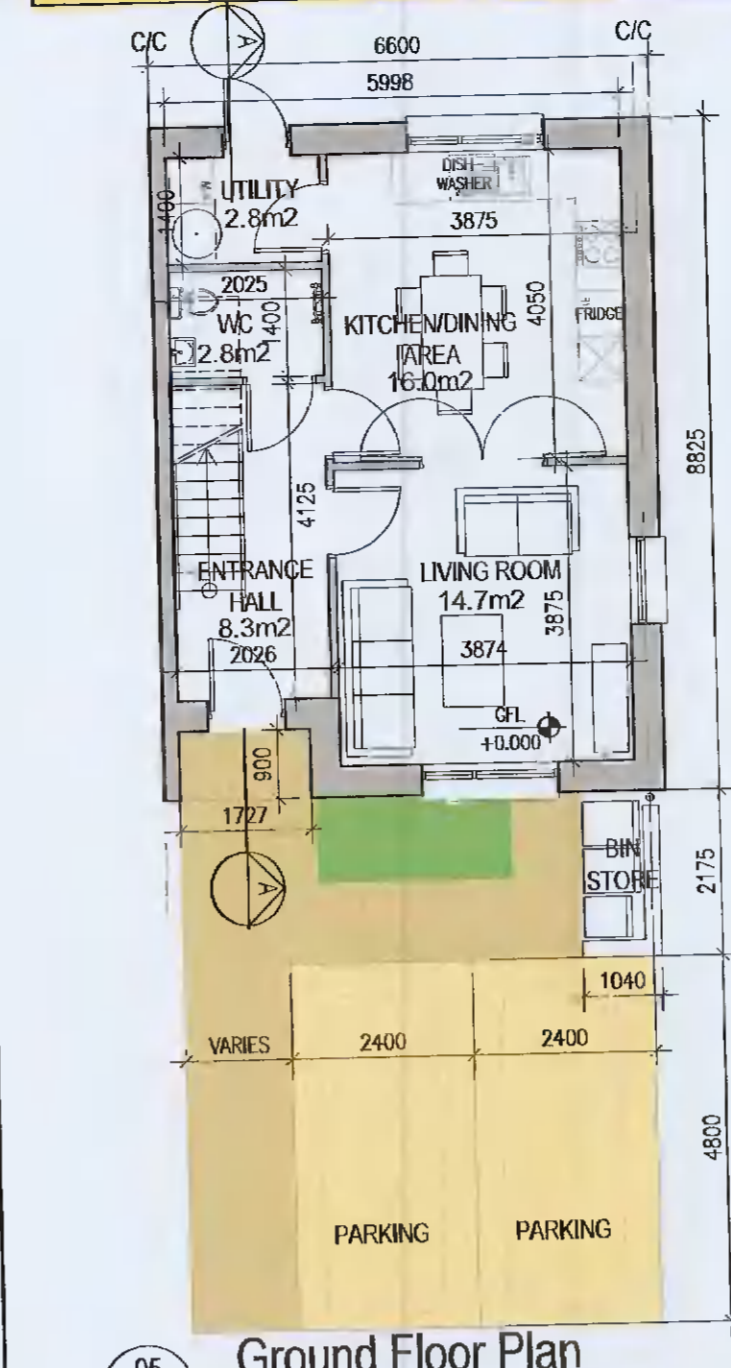


HOUSE TYPE D2



HOUSE TYPE D2 [HANDED]



01 Ground Floor Plan
1:100@A1

02 First Floor Plan
1:100@A1

03 Second Floor Plan
1:100@A1

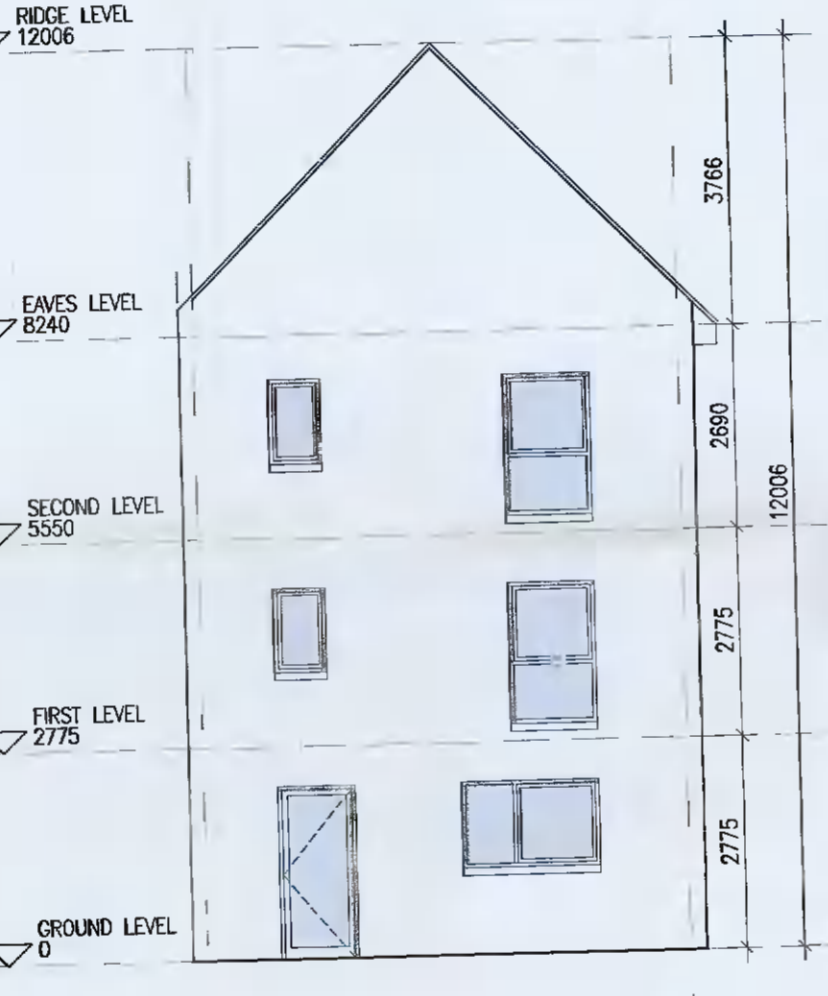
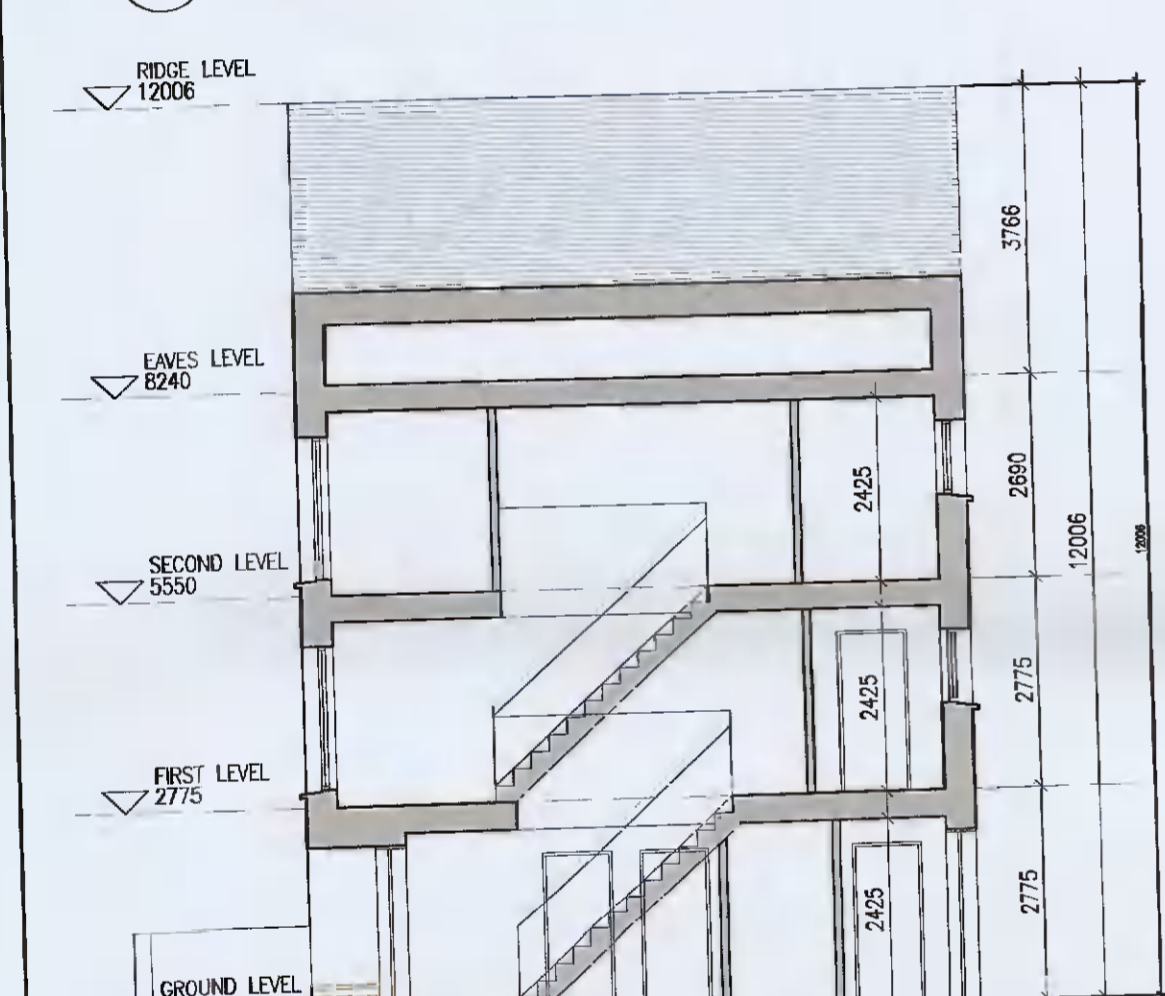
04 Roof Floor Plan
1:100@A1

05 Ground Floor Plan
1:100@A1

06 First Floor Plan
1:100@A1

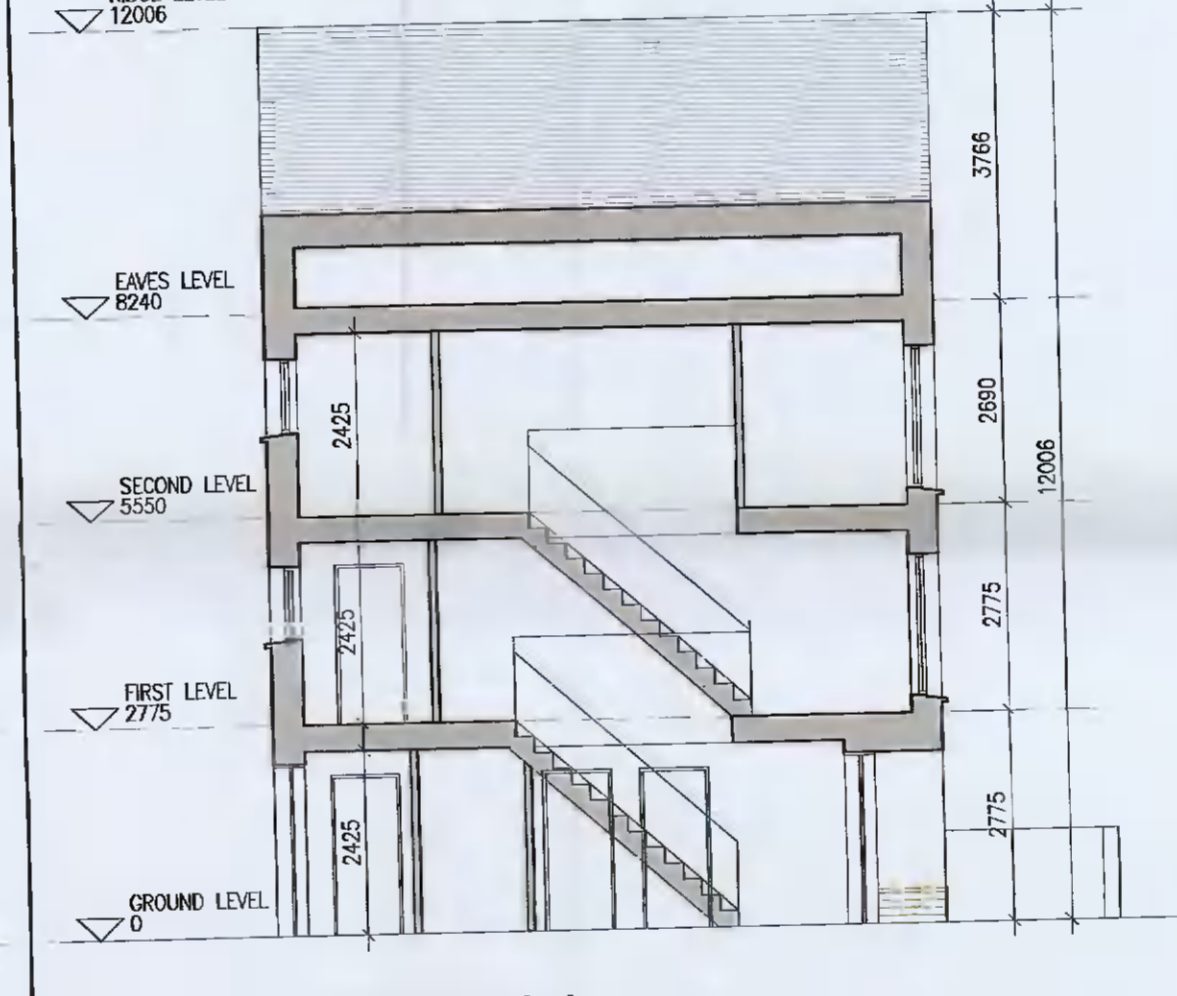
07 Second Floor Plan
1:100@A1

08 Roof Floor Plan
1:100@A1



10 Front Elevation
1:100@A1

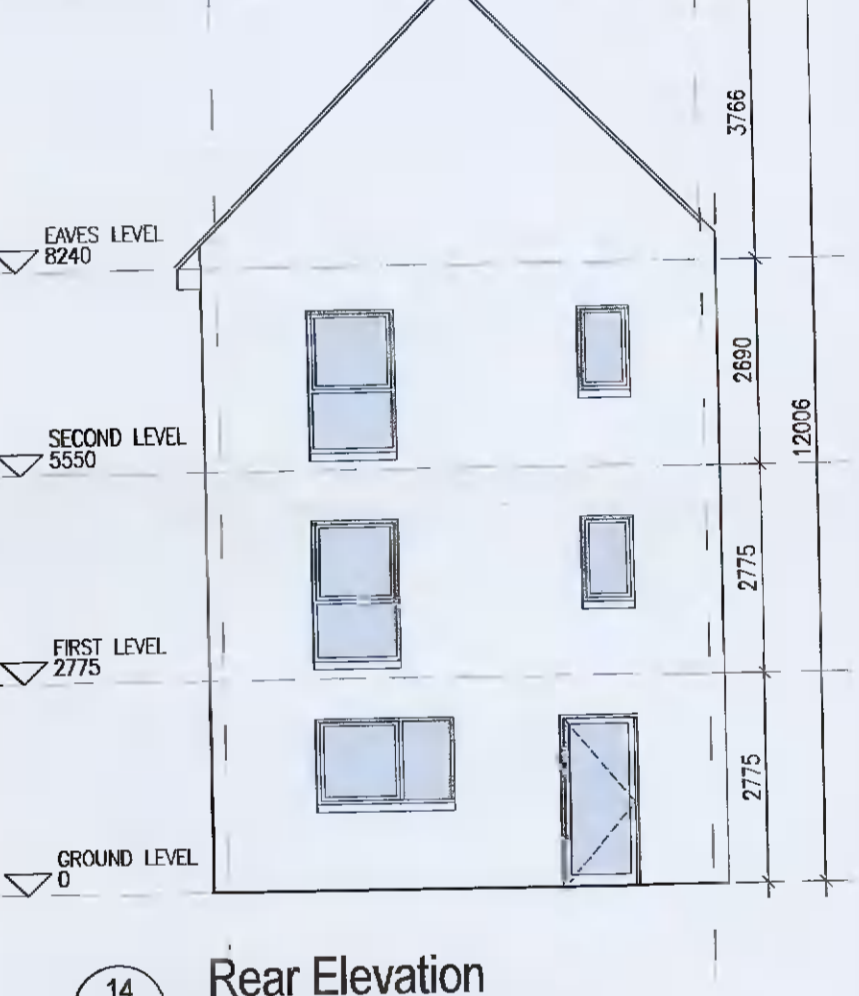
11 Rear Elevation
1:100@A1



12 Section A-A
1:100@A1



13 Front Elevation
1:100@A1



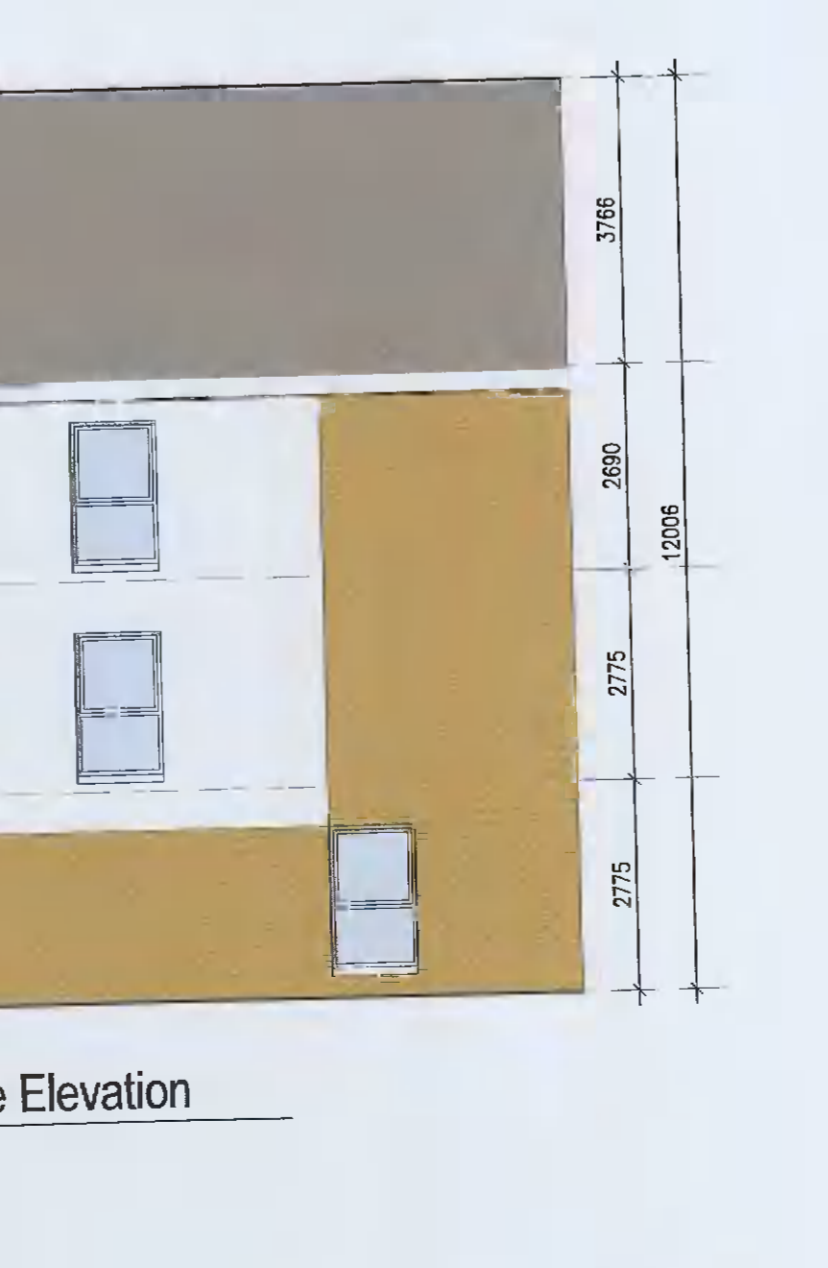
14 Rear Elevation
1:100@A1



15 Key Plan [NTS]



15 Gable Elevation
1:100@A1



16 Gable Elevation
1:100@A1

HOUSE TYPE D2	
Ground floor area	46.1m ²
First floor area	48.1m ²
Second floor area	48.1m ²
Total Floor Area (4-bed unit):	142.3m²

EXTERNAL FINISHES	
WALLS:	PAINTED SAND / CEMENT RENDER OR PROPRIETARY PRECOLOURED RENDER FINISH. SELECTED BRICKWORK WHERE INDICATED ON DRAWINGS.
WINDOWS:	SELECTED PROPRIETARY DOUBLE / TRIPLE GLAZED WINDOW SYSTEM WITH FRAMES TO APPROVED COLOUR. OBTAINED BY GLAZING TO BATHROOMS AND EN-SUITES.
DOORS:	SELECTED PROPRIETARY DOORS AND GLAZED SIDE SCREENS TO APPROVED COLOUR.
RAINWATER GOODS:	UPVC OR POWDER COATED METAL GUTTERS AND RAINWATER PIPES TO SELECTED COLOUR.
MAIN ROOF:	CONCRETE ROOF TILES IN SELECTED COLOUR.
LOW LEVEL PROJECTION:	ZINC CANOPY TO ENTRANCE OF UNITS
OTHER ITEMS:	UPVC OR POWDER COATED METAL FASCIAS, SOFFITS AND BARGE BOARDS. PAINTED MILDSTEEL RAILINGS AND BALUSTRADES

UNIT TYPE KEY	
Unit Type	Unit Level (Duplex only)
F1	X1
Finishes/Roof (if variations occur)	
FINISHES	
Z	Plain white render
Y	Brick
X	Plain white render with grey brick areas
V/W	Plain white render with brick areas
DUPLEX - Relates to front & rear elevations	
HOUSES - Relates to front elevation (*)	
ROOF FORM	
A1Y	Asymmetrical roof
D1V	Cable roof with hip roof intersection
D1W	Cable roof
Note: refer to site layout (6259-P-003) for location of unit types and unit type drawings (6259-P-100/ 200 series) for details	
*A2, an exception, relates to the rear elevation	

Notes

- Copyright Reserved
- Work to figure of dimensions only. Do not scale drawing.
- The contractor is responsible for checking all levels and dimensions on site and shall refer all discrepancies to the Architect.
- Where appropriate, for details of c.c. structure, or mechanical and electrical details, see Engineers drawings.
- Proprietary items shall be checked with manufacturer.
- Sizes of proprietary items shall be checked with manufacturer.
- The contractor shall be responsible for the coordination of structure, finishes and services.
- Architect: 6259-P-100/ 200 series

Issue Status	Progress	■
Planning Application	Fire Cert	■
Disability Cert	Tender	■
Construction	As Built	■
Information Only	House Type D2 [Handed]	■

No.	Date	Revision	Initials
01	12.04.2021	Preliminary issue for comment	BKD
02	20.05.2021	ISSUED FOR PLANNING	BKD

Project	Aderrig Phase 2, Adamstown SDZ Residential Development
Drawing Title	House Type D2 [Mid-Terrace] Handed/Non-handed-Plans,Elevations, Sect.
Drawing No.	6259-P-115
Scale	1:100@A1
Rev	02
Drawn	BKD
Date	12.04.2021

6-7 HARCOURT TERRACE, DUBLIN 2, IRELAND
T: +353 1 438 2460 F: +353 1 475 7386
e: architecture@bkd.ie
www.bkd.ie

bkd architects
BURKE-KENNEDY DOYLE