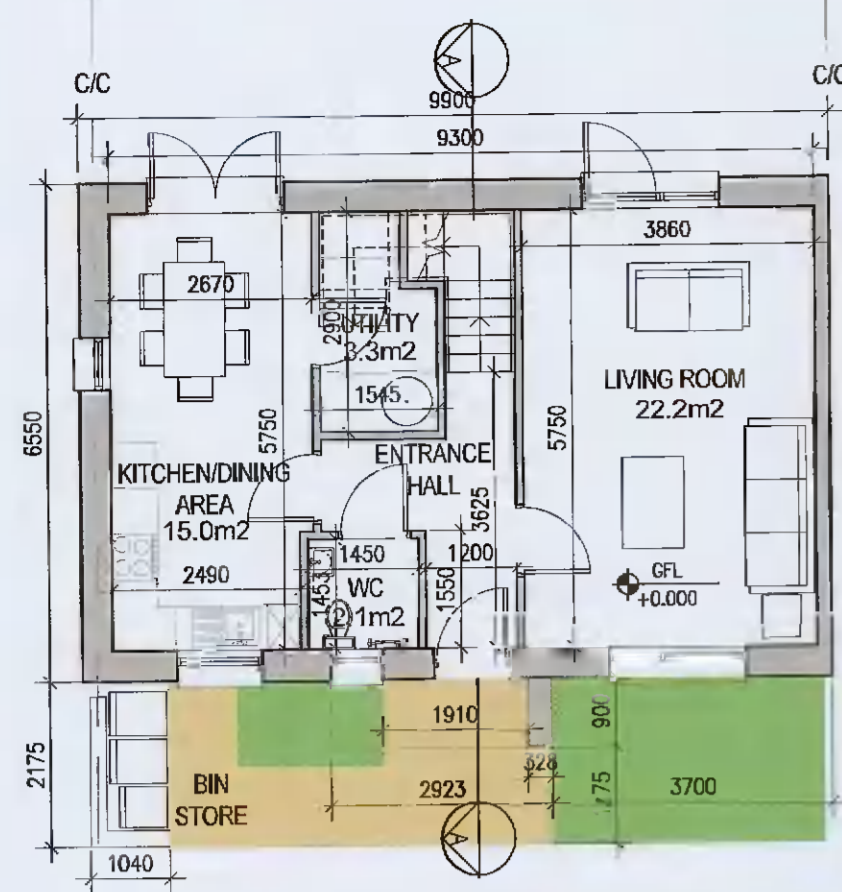
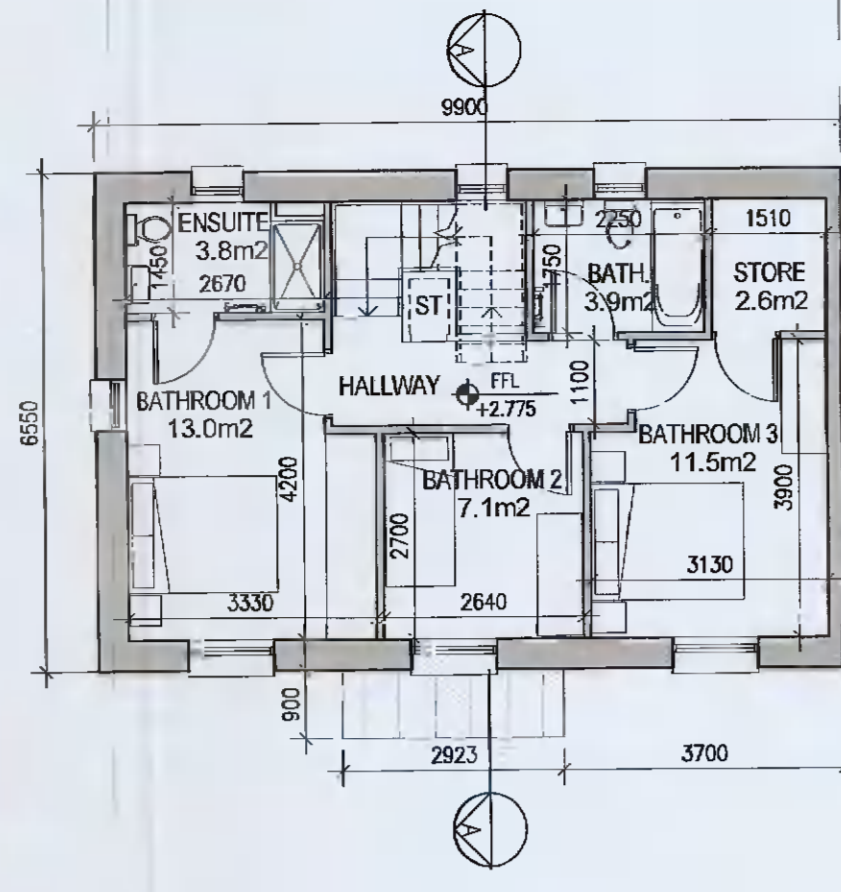


**HOUSE TYPE C2**

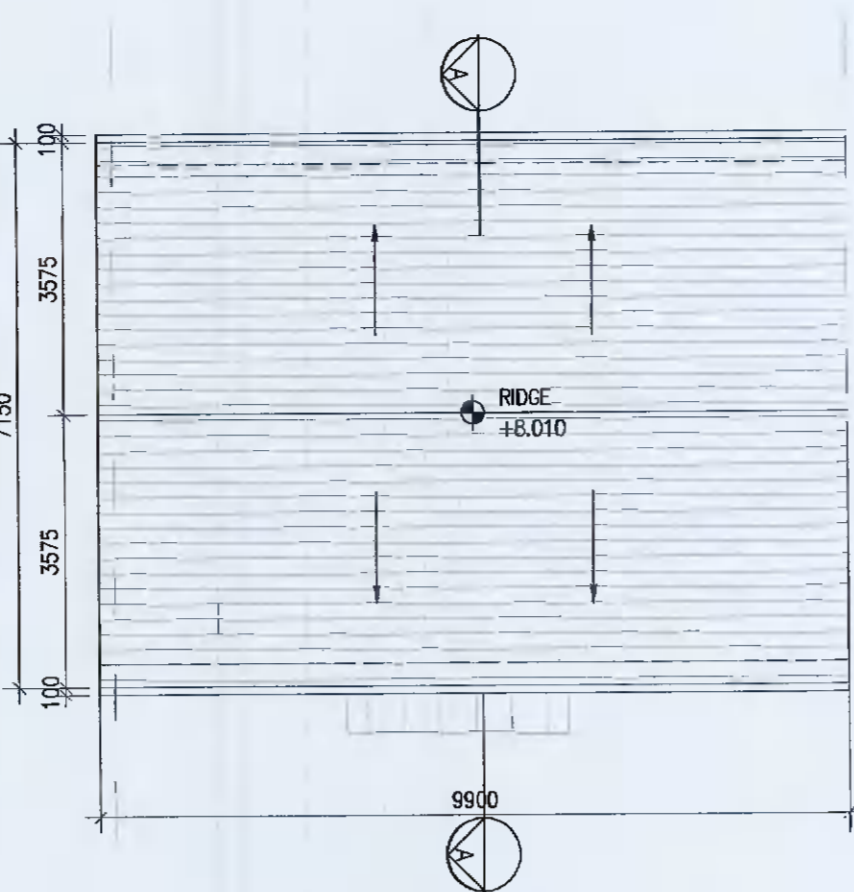


Front garden varies. Refer to 6259-P-003 & 6259-P-301/302 for information

01 Ground Floor Plan  
1:100@A1



02 First Floor Plan  
1:100@A1



03 Roof Floor Plan  
1:100@A1



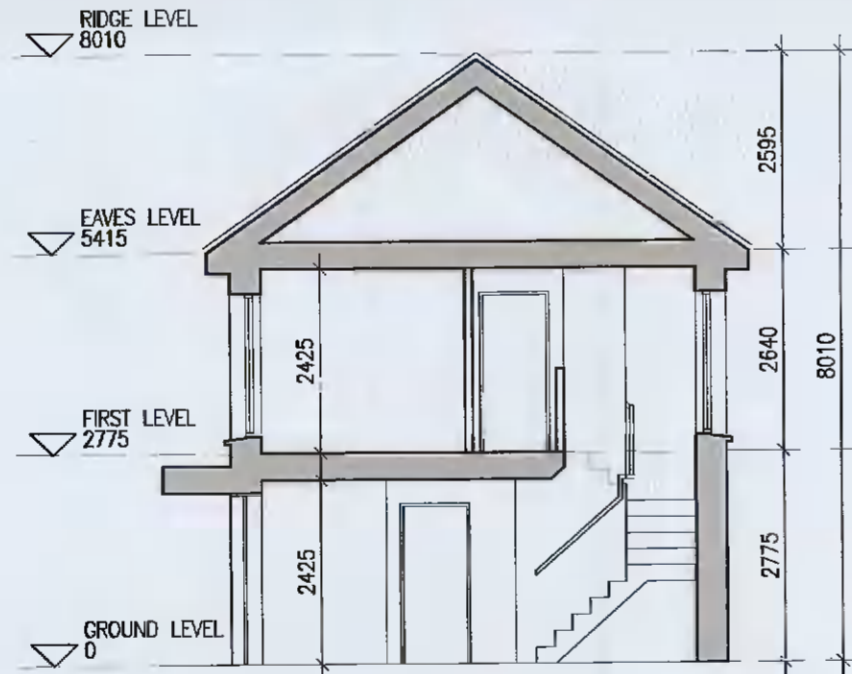
07 Front Elevation 01  
1:100@A1



08 Rear Elevation 01  
1:100@A1

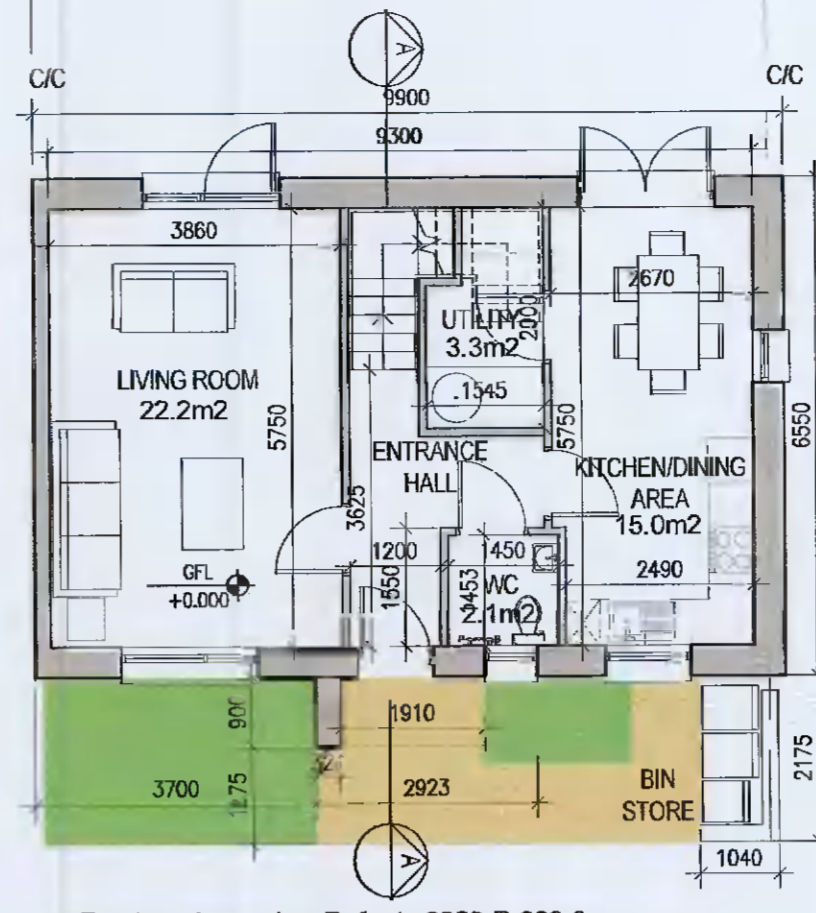


11 Gable Elevation 01  
1:100@A1



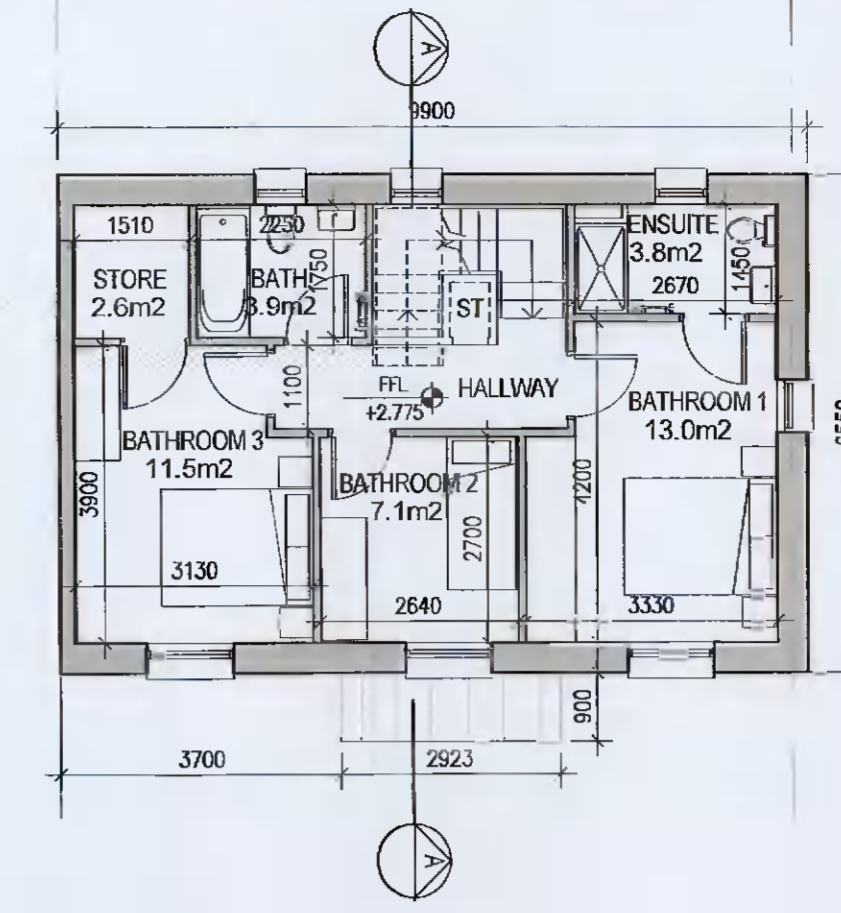
12 Section A-A  
1:100@A1

**HOUSE TYPE C2 [HANDED]**

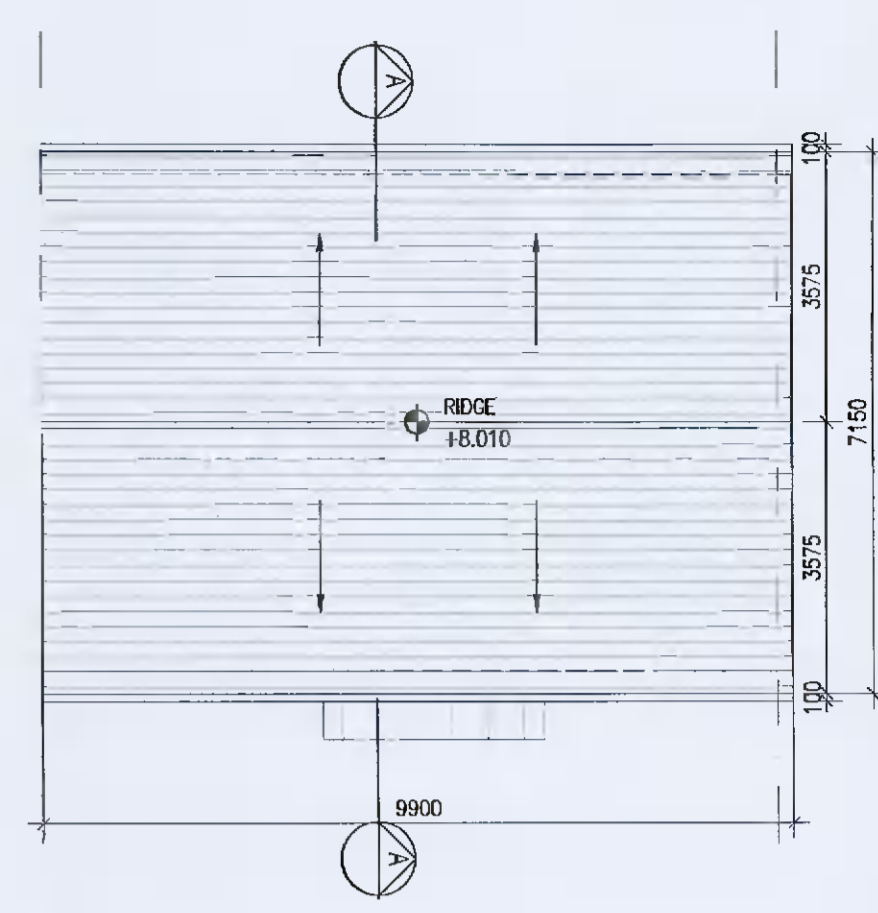


Front garden varies. Refer to 6259-P-003 & 6259-P-301/302 for information

04 Ground Floor Plan  
1:100@A1



05 First Floor Plan  
1:100@A1



06 Roof Floor Plan  
1:100@A1



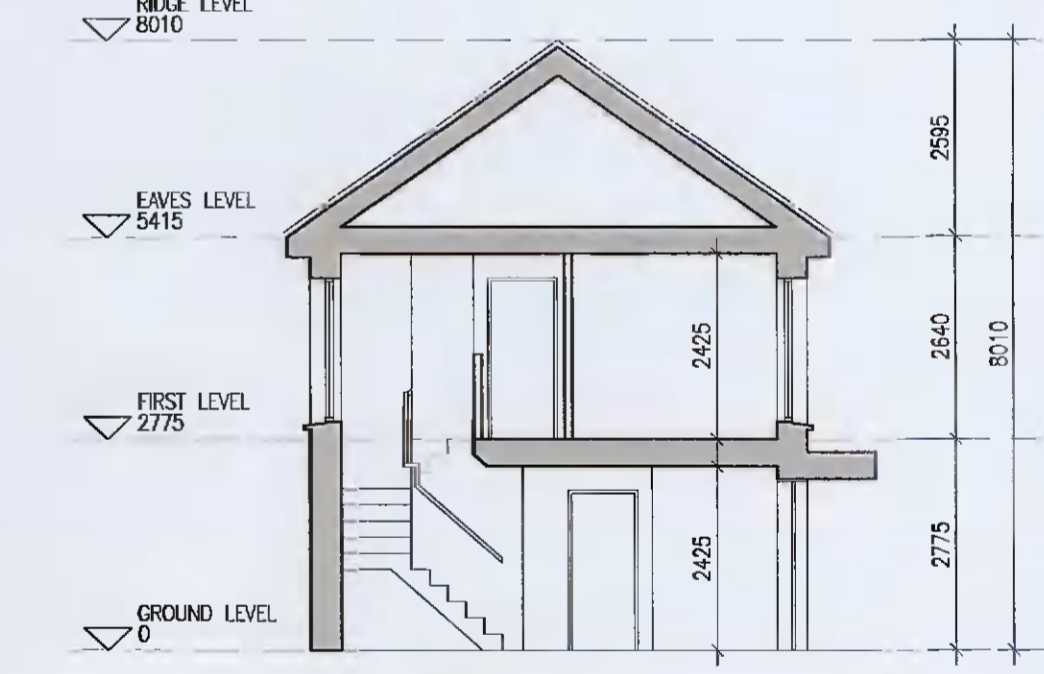
09 Front Elevation 01  
1:100@A1



10 Rear Elevation 01  
1:100@A1



13 Gable Elevation 01  
1:100@A1



14 Section A-A  
1:100@A1



**EXTERNAL FINISHES**  
**WALLS:** PAINTED SAND / CEMENT RENDER OR PROPRIETARY PRECOLOURED RENDER FINISH SELECTED BRICKWORK WHERE INDICATED ON DRAWINGS  
**WINDOWS:** SELECTED PROPRIETARY DOUBLE / TRIPLE GLAZED WINDOW SYSTEM WITH FRAMES TO APPROVED COLOUR OBSOURED GLAZING TO BATHROOMS AND EN-SUITES.  
**DOORS:** SELECTED PROPRIETARY DOORS AND GLAZED SIDE SCREENS TO APPROVED COLOUR.  
**RAINWATER GOODS:** uPVC OR POWDER COATED METAL GUTTERS AND RAINWATER PIPES TO SELECTED COLOUR.  
**MAIN ROOF:** CONCRETE ROOF TILES IN SELECTED COLOUR.  
**LOW LEVEL PROJECTION:** ZINC CANOPY TO ENTRANCE OF UNITS  
**OTHER ITEMS:** uPVC OR POWDER COATED METAL FASCIAS, SOFFITS AND BARGE BOARDS PAINTED MILDSTEEL RAILINGS AND BALUSTRADES

**UNIT TYPE KEY**  
 Unit Type: [F] [X] [1]  
 Unit Level (Duplex only): [1]  
 Finishes/Roof (if variations occur)  
**FINISHES**  
 Z- Plain white render  
 Y- Brick  
 X- Plain white render with grey brick areas  
 V/W- Plain white render with brick areas  
**DUPLEX-** Relates to front & rear elevations  
**HOUSES-** Relates to front elevation (\*)  
**ROOF FORM**  
 A1Y- Asymmetrical roof  
 D1V- Gable roof with hip roof intersection  
 D1W- Gable roof  
 Note: refer to site layout (6259-P-003) for location of unit types and unit type drawings (6259-P-100/ 200 series) for details  
 \*A2, an exception, relates to the rear elevation

**HOUSE TYPE C2**  
 Ground floor area 53.5m<sup>2</sup>  
 First floor area 53.5m<sup>2</sup>  
 Total Floor Area (3-bed unit): 107.0m<sup>2</sup>

NOTE: LANDSCAPING TO THE FRONT VARIES. REFER TO SITE LAYOUT FOR ALTERNATIVE ARRANGEMENTS

- Notes**
- Copyright Reserved
  - Work to figured dimensions only. Do not scale drawings
  - The contractor is responsible for checking all levels and dimensions on site and shall refer all discrepancies to the Architect
  - Where appropriate, for details of e.c. structures, or mechanical and electrical details, see Engineers drawings
  - Proprietary items shall be fixed in strict accordance with manufacturers instructions.
  - Sizes of proprietary items shall be checked with manufacturer.
  - The contractor shall be responsible for the coordination of structure, finishes and services.
  - Project Section: 6259-P-003, 6259-P-100, 6259-P-200, 6259-P-301, 6259-P-302, 6259-P-303, 6259-P-304, 6259-P-305, 6259-P-306, 6259-P-307, 6259-P-308, 6259-P-309, 6259-P-310, 6259-P-311, 6259-P-312, 6259-P-313, 6259-P-314, 6259-P-315, 6259-P-316, 6259-P-317, 6259-P-318, 6259-P-319, 6259-P-320, 6259-P-321, 6259-P-322, 6259-P-323, 6259-P-324, 6259-P-325, 6259-P-326, 6259-P-327, 6259-P-328, 6259-P-329, 6259-P-330, 6259-P-331, 6259-P-332, 6259-P-333, 6259-P-334, 6259-P-335, 6259-P-336, 6259-P-337, 6259-P-338, 6259-P-339, 6259-P-340, 6259-P-341, 6259-P-342, 6259-P-343, 6259-P-344, 6259-P-345, 6259-P-346, 6259-P-347, 6259-P-348, 6259-P-349, 6259-P-350, 6259-P-351, 6259-P-352, 6259-P-353, 6259-P-354, 6259-P-355, 6259-P-356, 6259-P-357, 6259-P-358, 6259-P-359, 6259-P-360, 6259-P-361, 6259-P-362, 6259-P-363, 6259-P-364, 6259-P-365, 6259-P-366, 6259-P-367, 6259-P-368, 6259-P-369, 6259-P-370, 6259-P-371, 6259-P-372, 6259-P-373, 6259-P-374, 6259-P-375, 6259-P-376, 6259-P-377, 6259-P-378, 6259-P-379, 6259-P-380, 6259-P-381, 6259-P-382, 6259-P-383, 6259-P-384, 6259-P-385, 6259-P-386, 6259-P-387, 6259-P-388, 6259-P-389, 6259-P-390, 6259-P-391, 6259-P-392, 6259-P-393, 6259-P-394, 6259-P-395, 6259-P-396, 6259-P-397, 6259-P-398, 6259-P-399, 6259-P-400

Issue Status	
Progress	
Planning Application	
Fire Cert	
Disability Cert	
Tender	
Construction	
As Built	
Information Only	

No.	Date	Revision	Initials
01	12.04.2021	Preliminary issue for comment	BKD
02	20.05.2021	ISSUED FOR PLANNING	BKD

Project	<b>Aderrig Phase 2, Adamstown SDZ Residential Development</b>
Drawing Title	House Type C2 (end terrace) [handed] Non-handed-Plans, Elevation, Section
Drawing No.	6259-P-109
Scale	1:100@A1
Rev	02
Drawn	BKD
Date	12.04.2021

6-7 HARCOULET TERRACE, DUBLIN 2, IRELAND  
 T +353-1-618 2400 F +353-1-676 7386  
 www.bkd.ie  
**bkd architects**  
 BURKE-KENNEDY-DOYLE