

LANDSCAPE DESIGN REPORT

Proposed residential development
Greenhills Road
Tallaght
Dublin 24

prepared by

MURPHY+SHEANON

MAY 2021

CONTENTS

01. INTRODUCTION

- 1.1 SITE CONTEXT
- 1.2 SITE DESCRIPTION
- 1.3 DEVELOPMENT DESCRIPTION

02. DESIGN OBJECTIVES

- 2.1 OBJECTIVES & REFERENCES

03. SITE ANALYSIS

- 3.1 SUNLIGHT AND SHADE ANALYSIS

04. DESIGN PROPOSAL

- 4.1 MASTER PLAN
- 4.2 DESIGN OVERVIEW
- 4.3 OPEN SPACE ANALYSIS
- 4.4 OPEN SPACE TYPOLOGIES
- 4.5 HARD LANDSCAPING MATERIALS
- 4.6 HARD LANDSCAPING ELEMENTS
- 4.8 PLANTING PLAN
- 4.9 SOFT LANDSCAPING DETAILS
- 4.10 SITE SECTIONS
- 4.11 PLAY STRATEGY - TODDLER PLAY
- 4.12 PLAY STRATEGY - CHILDREN'S PLAY
- 4.13 IMAGERY

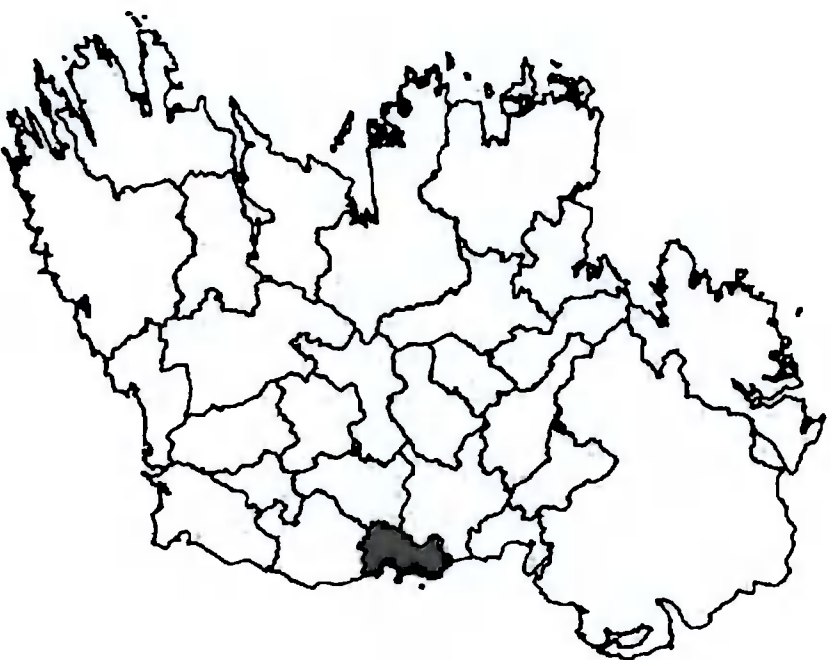
05. APPENDICES

- 5.1 LANDSCAPE INFORMATION BLOCKS
- 5.2 HARD LANDSCAPING DETAILS
- 5.3 SOFT LANDSCAPING DETAILS
- 5.4 A1 LANDSCAPE DRAWINGS

Murphy+Sheanon has been appointed to provide landscape architectural services for this development project at Greenhills road, Tallaght, Dublin 24. Tom Phillips + Associates Chartered Planning Consultants on behalf of the applicant O' Mahony Holdings SPRL, are to apply to South Dublin County Council (SDCC) for permission for a residential development at this site which measures 2342sq.m. The purpose of this document is to detail the landscape design proposal for this development.

01. INTRODUCTION

1.1 SITE CONTEXT



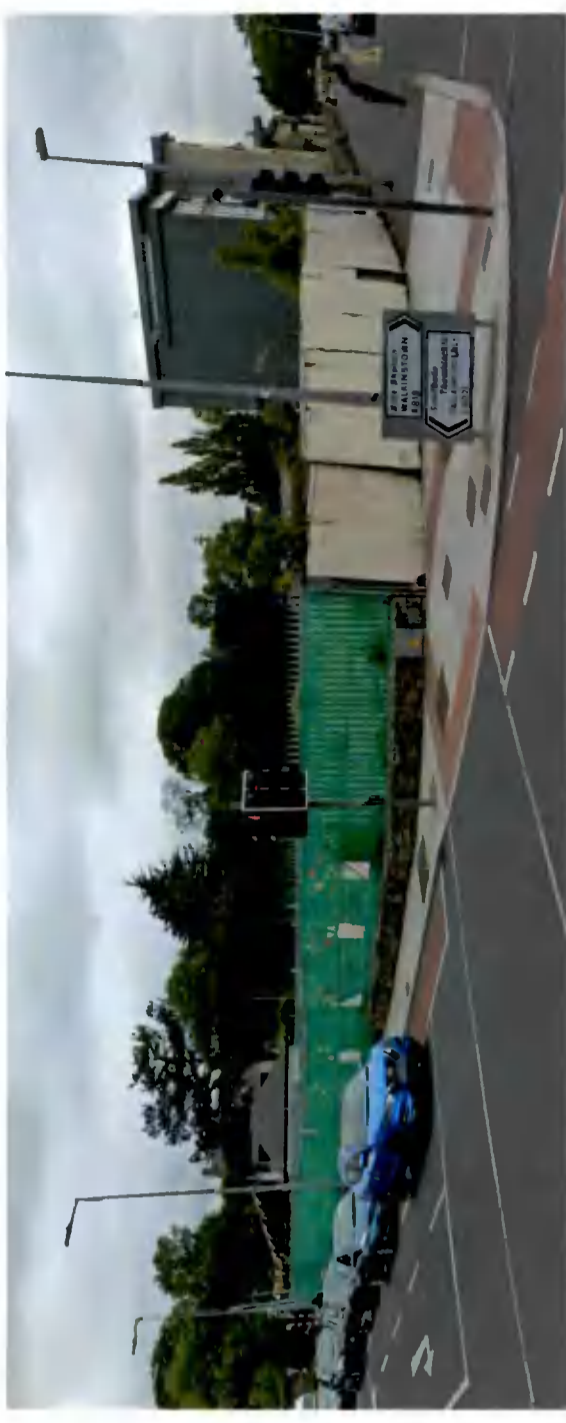
O'Mahony Holdings SPRL intend to apply for permission for development at this site of approximately 0.23ha known as Greenhills Road, Tallaght, Dublin 24. The subject site is bounded to the east by Greenhills Road, to the west by Old Greenhills Road, and to the south-east corner by Main Street. The subject site is currently partly developed with an existing residential scheme known as Greenhill's Court comprising 17 no. apartment units in 4 no. apartment blocks ranging in height from 2 to 4 storeys, including basement car park.

01. INTRODUCTION

1.2 SITE DESCRIPTION

The site (approximately 0.23 ha) known as Greenhills Road, Tallaght, Dublin 24 is bounded to the East by Greenhills Road, to the West by Old Greenhills Road, and to the South-East by Main Street. This location makes it highly accessible by many means of transportation.

The subject site is currently partially developed with an existing residential scheme known as Greenhill's Court comprising 17 no. apartment units in 4 no. apartment blocks ranging in height from 2 to 4 storeys, including basement car park. To provide the additional apartment numbers and access to the landscape courtyard, it is proposed that a part of the existing residential block located on the south-eastern corner of the site (3 no. existing units including stair core) will be demolished.



1.3 DEVELOPMENT DESCRIPTION

The development will consist of; the demolition of 3 no. existing apartment units and the construction of a residential development arranged in 2 no. building blocks, (Block A and Block B) ranging from 3 to 6 no. storeys in height over basement level. Block A comprises 11 no. residential apartments in a 5 to 6 storey building and including a ground floor level café at the building's southern eastern corner. Block B comprises 15 no. residential apartments in a 3 to 5 storey building.

The proposed development will comprise 26 no. new residential units, with associated balconies, winter gardens and terraces. The proposed development will comprise a total of 40 no. apartment units derived from 26 no. new apartments and 14 no. existing apartments.

The development will also consist of: Relocation of the existing basement access on Old Greenhills Road and the upgrade and extension of the existing basement level; provision of internal footpaths; landscaped communal open space; a total of 15 no. car parking spaces, 94 no. cycle parking spaces and 1 no. motorcycle parking.



EXISTING SITE

02. DESIGN OBJECTIVES

2.1 OBJECTIVES & REFERENCES

DESIGN GUIDELINES & STANDARDS

The landscape design proposal detailed within this document has been developed having regard to the following local and national policy and guidance documents:

- South Dublin County Council Development Plan 2016 – 2022
- Tallaght Town Centre Local Area Plan 2020
- National Children's Play Policy 'Ready Steady Play'
- National Biodiversity Data Centre - All-Ireland Pollinator Plan 2015-2020 and 2021-2025
- Sustainable Urban Housing: Design Standards for New Apartments
- Urban Design Manual - A best practice guide

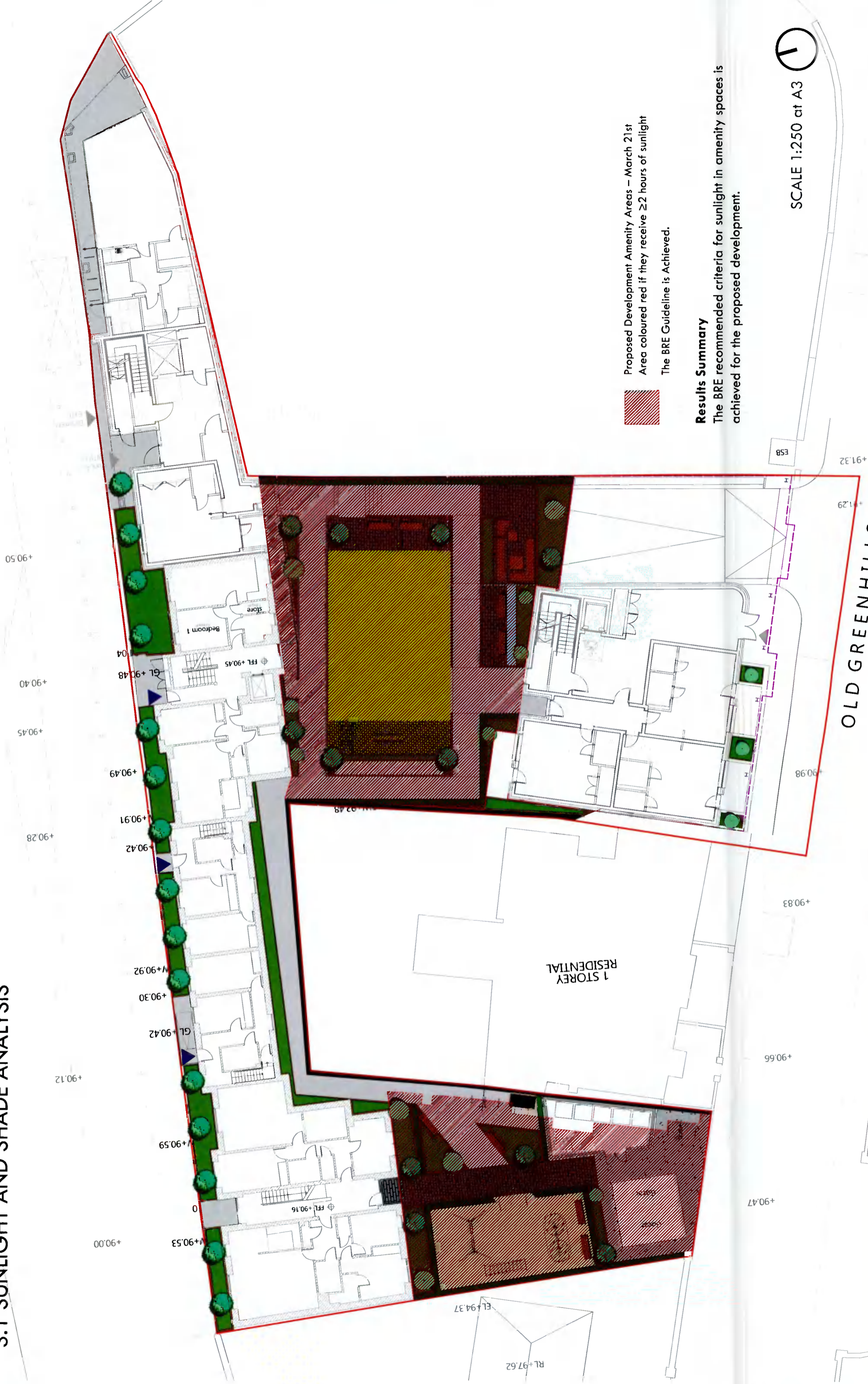
DESIGN CONSIDERATIONS & OBJECTIVES

The following design objectives have been shaped through our analysis of the site and the surrounding area, previous planning applications, and from the consultations with South Dublin County Council:

- To create high-quality outdoor spaces for future occupiers of the proposed development that allows for intergenerational use and flexibility in recreation activity, for social interaction and active play as well as spaces that are quiet and calming.
- Privacy to neighbouring sites and for future occupants of the proposed development. More specifically to propose soft landscaping treatments that will provide privacy screening to ground floor private terraces and to diffuse views to/from neighbouring sites.
- To ensure our landscaping proposals comply with the SDCC Development Plan, and specific sections relating to public, private and communal open space standards, recreation and play facilities.
- To ensure the quantum of public and communal outdoor space provided within the landscape design proposal exceeds the requirements set out in the SDCC Development Plan (2016-2022)
- To develop a palette of hard and soft landscape materials and elements that will be deployed in a sophisticated manner that complements the proposed building façade.
- The proposed hard landscaping materials and elements will have a bespoke quality, are durable and maintenance-friendly and assist in promoting a 'sense of place' for the overall scheme.
- Planting for biodiversity: to propose a planting scheme that takes cognizance of the All-Ireland Pollinator Plan 2015-2020 and 2021-2025 as issued by the National Biodiversity Data Centre.
- To propose a planting scheme that takes account of the planting and environmental conditions that are anticipated within the site, ensuring proposed plant mixes and trees will thrive whilst also ensuring year round interest and colour.
- To implement Sustainable Urban Drainage Systems (SUDS) where feasible.

03. SITE ANALYSIS

3.1 SUNLIGHT AND SHADE ANALYSIS



03. DESIGN PROPOSAL

3.1 MASTER PLAN



SCALE 1:250 at A3



04. DESIGN PROPOSAL

4.2 DESIGN OVERVIEW

This landscape design proposal has been developed in collaboration with the project design team, the key members of which are:

Planning Consultant: Tom Phillips + Associates
Architect: TOT Architects
Civil & Structural Engineer: Punch Consulting Engineers

This report should be read in conjunction with the accompanying Architects and Engineers reports, drawings, and other information prepared by the design team along with the following A1 landscape drawings included with this planning package;

- 362-DD-01 - Landscape Design Plan
- 362-DD-02 - Landscape Planting Plan

DESIGN STRATEGY

The landscape design strategy for this development can be broken down as follows:

- Public Realm & Open Spaces
- Hard Landscaping Materials
- Sustainable Urban Drainage Systems (SUDS)
- Planting for Biodiversity
- Play Strategy

PUBLIC REALM & OPEN SPACES

This design proposal creates a series of a high-quality usable outdoor spaces designed to accommodate a variety of users across the age spectrum that will create a sense of community within this development. These outdoor spaces include the following;

- Children's Play Space with seating.
- Outdoor seating area with work from home facilities.
- Communal amenity outdoor space designed for passive recreation.
- Communal exercise area
- Communal Kickabout space/grassed area.
- Public space along northern boundary with seating adjacent to apartment entrances.

The communal open spaces are proposed to the South of the site. These spaces are bordered by carefully considered plant mixes, providing a 'green setting', enhancing the biophilic quality and biodiversity of these spaces. An additional function of this planting strategy is that planting will improve screening in the space, both for the residents of dwellings at ground floor level and also from residents of adjoining developments. Many of these spaces are delineated by low hedge planting.

04. DESIGN PROPOSAL

4.2 DESIGN OVERVIEW - HARD MATERIALS, SUDS & PLAY STRATEGIES

HARD LANDSCAPE MATERIALS

All of the proposed surfaces are hard wearing and durable for an external urban environment. Reconstituted granite block paving has been proposed for the paths connecting each of the outdoor spaces. Reconstituted granite flag paving has been proposed for the outdoor seating areas. Subtle changes in colour tone will delineate between transitional and passive hard landscaping areas.

Engineered wood chip has been proposed as the safety surface within the designed toddlers and children's play spaces to BS EN 1177 Standards and to the recommended critical fall height depth.

SUSTAINABLE URBAN DRAINAGE SYSTEMS

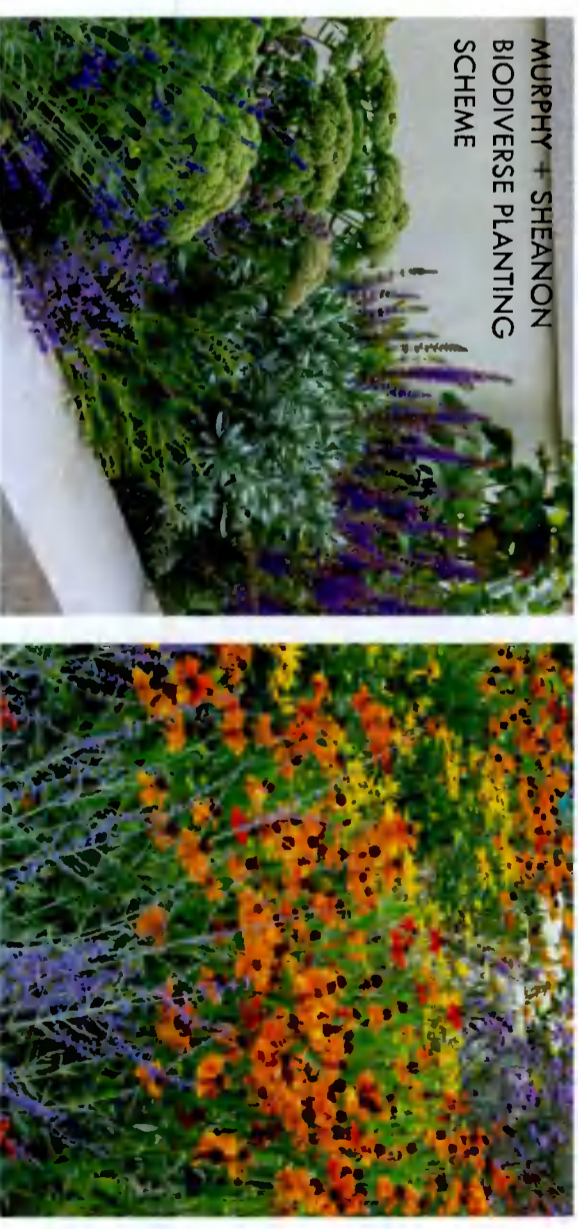
The following sustainable urban drainage measures have been applied to the landscape proposals for this site.

Green Roofs:

At roof level, green roof technology is being installed and a low maintenance sedum matting is proposed to reduce stormwater runoff. This solution is also beneficial from an environmental perspective as it is proven to increase biodiversity

PLANTING FOR BIODIVERSITY

We have proposed a planting scheme that takes cognisance of this and specifically the All-Ireland Pollinator Plan 2015-2020 and 2021-2025 as issued by the National Biodiversity Data Centre. The planting proposal contains >80% species recommended by Biodiversity Ireland as a pollinator species. Please refer to the planting plan and section 4.6 of this document for further details regarding proposed plant mixes and trees.



04. DESIGN PROPOSAL

4.2 DESIGN OVERVIEW - HARD MATERIALS, SUDS & PLAY STRATEGIES

PLAY STRATEGY

Play areas are recognised for their importance in contributing to the design goal of a well-designed public realm. Two play areas have been proposed for this scheme.

Children's Play Space

A play space is proposed along the northern boundary of the site. This play space measures 81 sqm and is designed for children between the ages of 0 to 12 years. It consists of 3 pieces of play equipment. Please refer to section 4.9 of this document for further details relating to this play space.

The aforementioned play area will be laid with an impact absorbing safety surface of engineered wood chip laid to the required depths relevant to play equipment fall heights. The proposed play equipment will be designed and manufactured in accordance with standards EN 1176 and EN 1177, and will be installed to manufacturers specifications.

Exercise Area

An exercise area is proposed adjacent to the central kick about area. This 22 sqm space has select equipment that allows for intergenerational use and a wide variety of exercises to be performed. Its close proximity to the lawn area allows for passive surveillance of children during family exercise periods. The equipment provided here is suitable for child's play and adult exercise. An example of this is the recently developed Hudson Park by DLRCC.

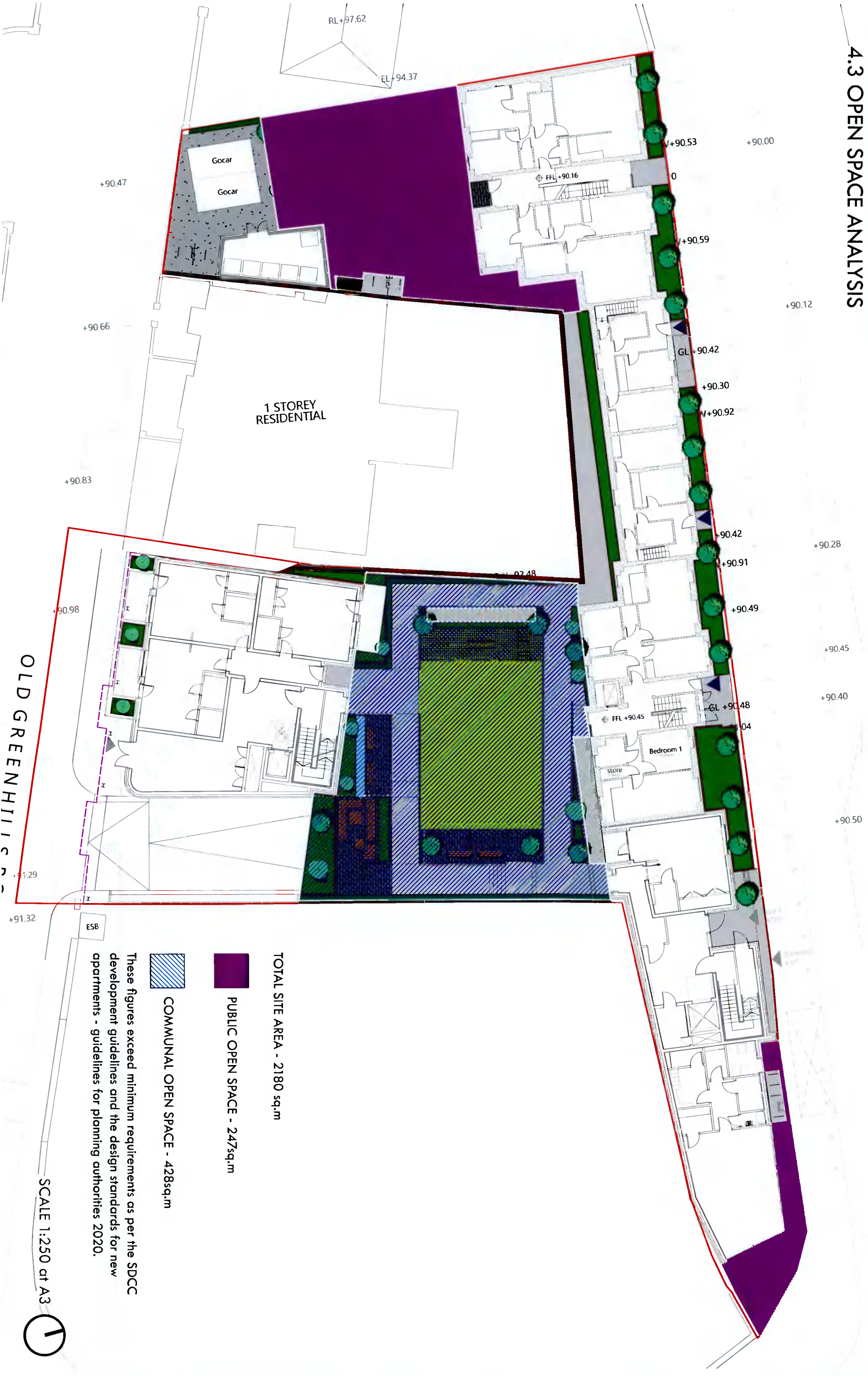
Kickabout Space

In addition to the above, the main communal space within this development has been designed to include a large expanse of lawn, enabling this space to function as an open kickabout area for people of all ages.



04. DESIGN PROPOSAL

4.3 OPEN SPACE ANALYSIS



TOTAL SITE AREA - 2180 sq.m

PUBLIC OPEN SPACE - 247sq.m

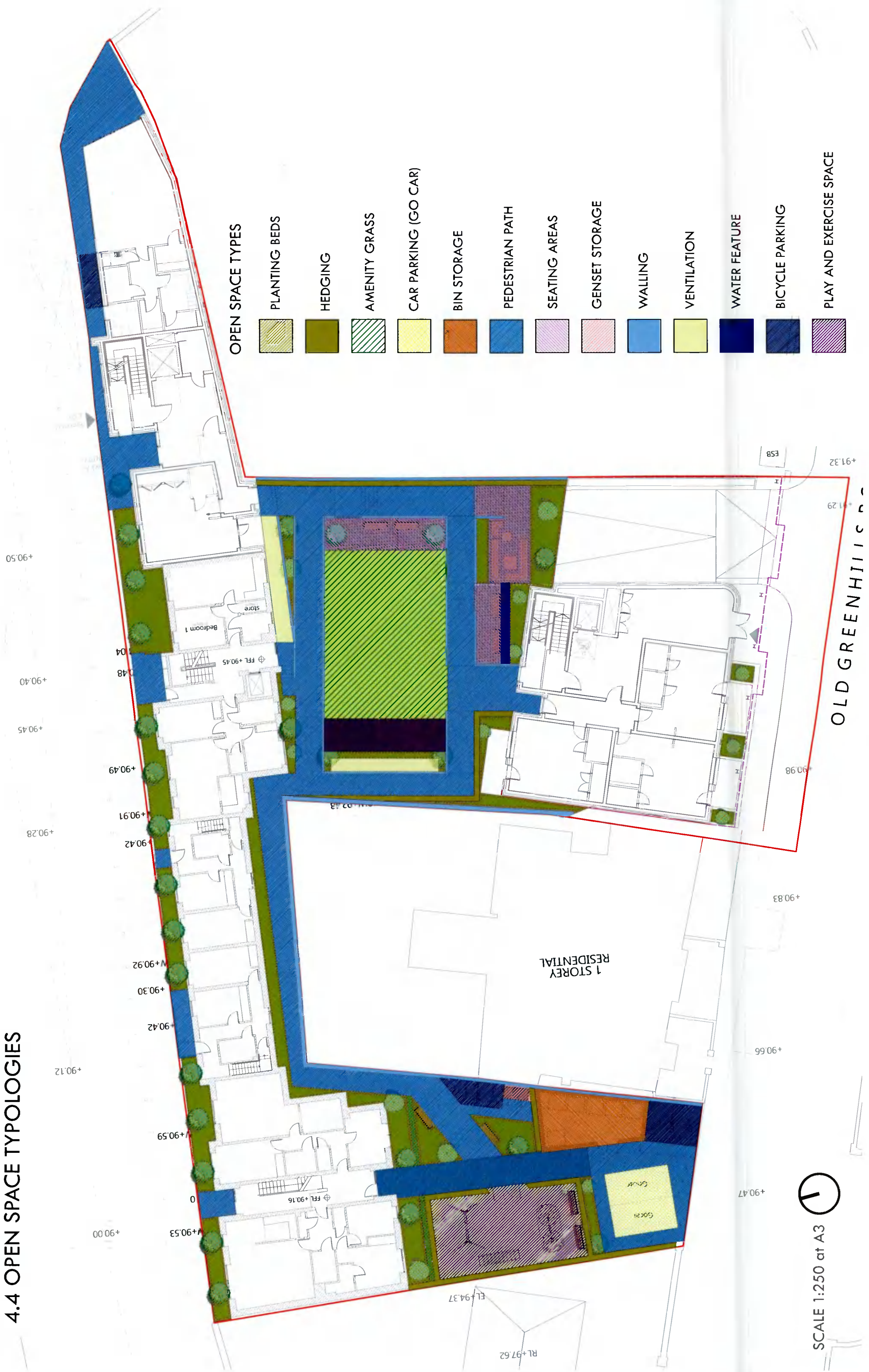
COMMUNAL OPEN SPACE - 428sq.m

These figures exceed minimum requirements as per the SDCC development guidelines and the design standards for new apartments - guidelines for planning authorities 2020.

SCALE 1:250 at A3



04. DESIGN PROPOSAL
4.4 OPEN SPACE TYPOLOGIES



SCALE 1:250 at A3

04. DESIGN PROPOSAL

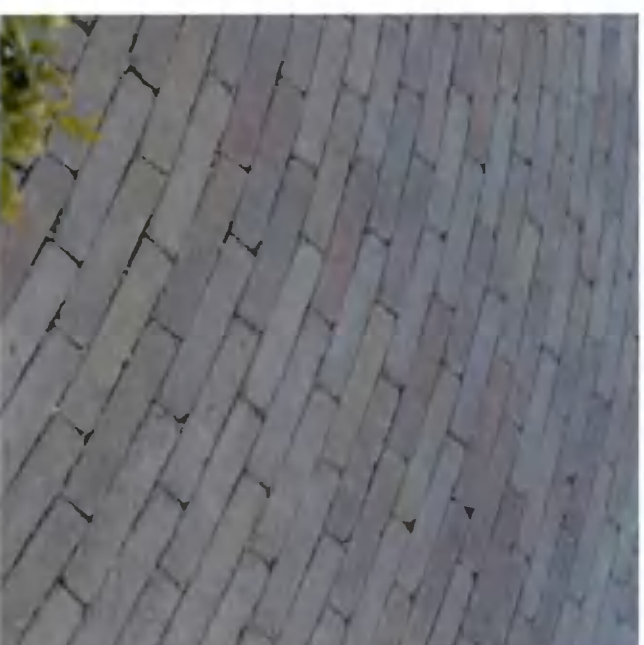
4.5 HARD LANDSCAPE MATERIALS



KILSARAN - SHELBOURNE PAVING FLAG



KILSARAN - SHELBOURNE PAVING FLAG



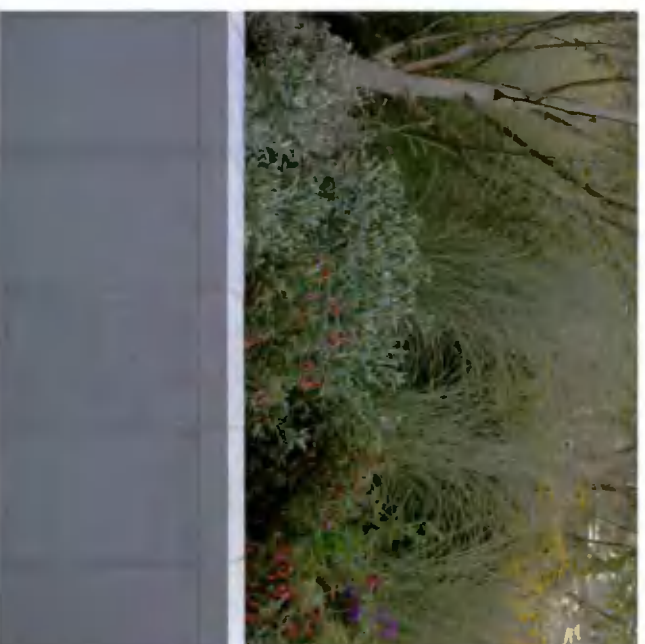
KILSARAN - INISH PAVING BLOCK



ENGINEERED WOOD CHIP



OMOS CIRCULAR TREE GRILLE



RETAINED PLANTING BED



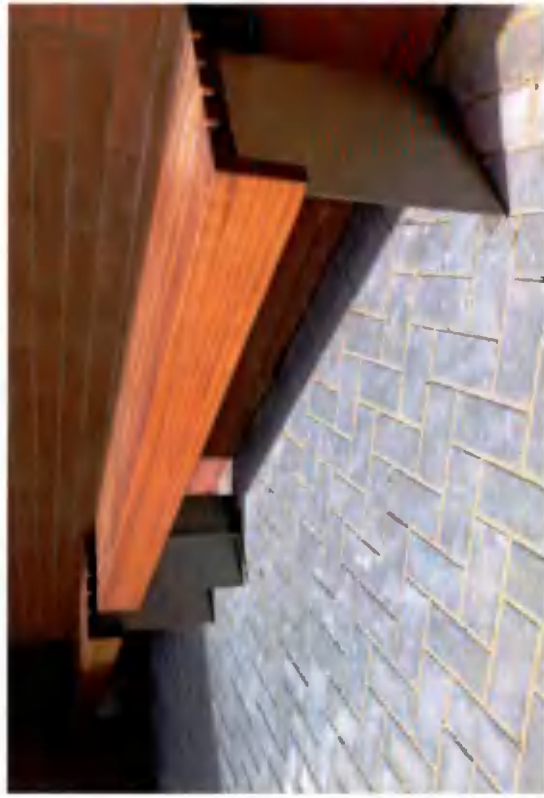
GRASSCRETE



CONCRETE PAVING

04. DESIGN PROPOSAL

4.6 HARD LANDSCAPE ELEMENTS



BENCHES

Blueton - Stainless Steel & Timber Seating

Bench Specifications;

Dimensions -
 430mm wide x 450mm high x 1800mm /2500mm long
 custom lengths available on request

Materials -
 Grade 316 stainless steel
 Certified hardwood slats

Finish -
 Satin finish
 Oiled slats

Supplied With -
 Machine Profiled Iroko slats
 Surface mounted base plates
 Wraparound designed seat top
 Hidden anti vandal fixings

Blueton site & street furniture is dedicated to the design, manufacture and supply of the highest quality outdoor furniture. They use local suppliers & recycled material wherever possible, therefore maintaining a low carbon footprint.

Benches will have access to outdoor sockets to facilitate work from home.



'WORK FROM HOME' AREA FURNITURE

External Works - Meet & Work Collection

Seating Specifications;
 M&W-LBS-120
 155/110x45x45 cm (Custom options available)

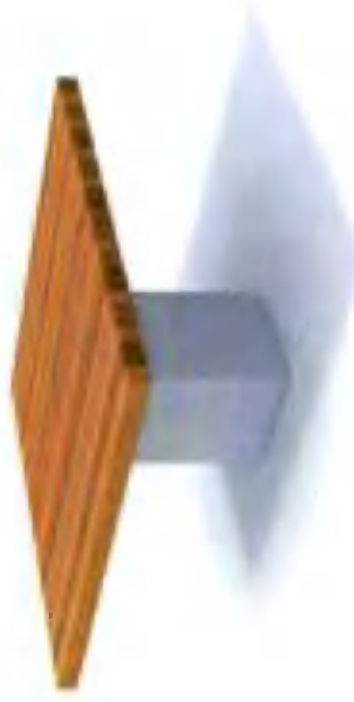
Table Specifications;
 M&W-TS-150-AL
 148x150x75 cm (Custom options available)

The combinations of benches, tables and tree planters offer innovative alternatives to traditional picnic settings and are ideal for creating attractive recreational areas for both short and longer stays. The various elements are made of aluminium with FSC-100% hardwood Solid Slats (70x70mm).

Endless layout variations are possible with the various Solid Meet&Work landscaping elements. This high-quality system is ideal for the outdoor area to provide an appealing space to work outside for apartment residents. As outdoor living becomes routine, flexible workstations and meeting areas are important.

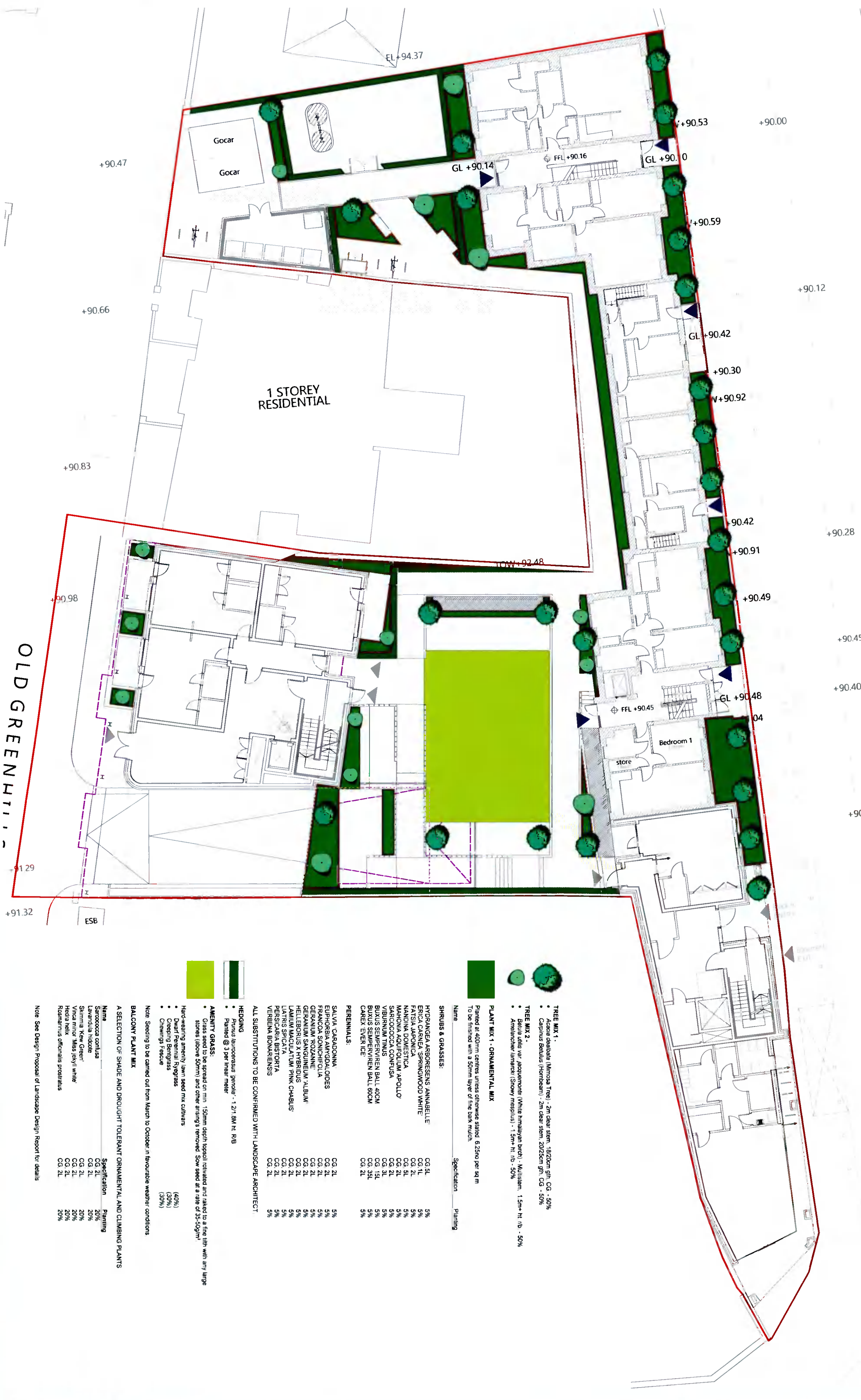
Framed with evergreen planting, this area offers an idyllic outdoor workspace.

Tables will have access to outdoor sockets to facilitate work from home.



04. DESIGN PROPOSAL

4.8 PLANTING PLAN



- TREE MIX 1**
- *Acacia dealbata* (Mimosa Tree) - 2m clear stem, 1820cm girth CG - 50%
 - *Carpinus Betula* (Hornbeam) - 2m clear stem, 2025cm girth CG - 50%
- TREE MIX 2**
- *Betula utilis* var. *jacquemontii* (White Himalayan birch) - Multistem, 1.5m+ ht. 70 - 50%
 - *Amelanchier lamarckii* (Snowy mesquillita) - 1.5m+ ht. 70 - 50%

PLANT MIX 1 - ORNAMENTAL MIX

Planted at 1400mm centres unless otherwise stated, 5.25sqm per sq m
To be finished with a 50mm layer of fine dark mulch.

- SHRUBS & GRASSES:**
- | Name | Specification | Planting |
|---------------------------------|---------------|----------|
| HYDRANGEA ARBORESCENS ANNABELLE | CG 5L | 5% |
| ERICA CARNEA SPRINGWOOD WHITE | CG 1L | 5% |
| FATSIA JAPONICA | CG 2L | 5% |
| MANONIA DOMESTICA | CG 2L | 5% |
| MAHONIA AQUIFOLIUM APOLLO | CG 2L | 5% |
| SARCOCOCOA CONFUSA | CG 2L | 5% |
| VIBURNUM TINUS | CG 3L | 5% |
| BIJULUS SEMPERVIRENS BALL 40CM | CG 15L | 5% |
| BIJULUS SEMPERVIRENS BALL 60CM | CG 35L | 5% |
| CAMELIA EVER ICE | CG 2L | 5% |

- PERENNIALS:**
- | | | |
|-------------------------------|-------|----|
| SALVIA CARADONNA | CG 2L | 5% |
| EUPHORBIA AMYGDALOIDES | CG 2L | 5% |
| FRANCOA SONCHIFOLIA | CG 2L | 5% |
| GERANIUM ROZANNE | CG 2L | 5% |
| GERANIUM SANGUINEUM ALBUM | CG 2L | 5% |
| HELLEBORUS X HYBRIDUS | CG 2L | 5% |
| LAMLIUM MACULATUM PINK CHABUS | CG 2L | 5% |
| LATIS SPICATA | CG 2L | 5% |
| PERSICARIA BISTORTA | CG 2L | 5% |
| VERBENA BONARIENSIS | CG 2L | 5% |

ALL SUBSTITUTIONS TO BE CONFIRMED WITH LANDSCAPE ARCHITECT

HEDGING

- *Prunus laurocerasus grandis* - 1.2m BM ht. RB
- Painted @ 3 per linear meter

AMENITY GRASS:

- Grass seed to be spread on min. 150mm depth topsoil (revised and raked to a fine tilth with any large stones (above 50mm) and other arising's removed. Sow seed at a rate of 35-50g/m²

Hard-wearing amenity lawn seed mix cultivars

- Dwarf Perennial Ryegrass (40%)
- Creeping Bentgrass (30%)
- Cheatings Fescue (30%)

BALCONY PLANT MIX

Note: Seeding to be carried out from March to October in favourable weather conditions

A SELECTION OF SHADE AND DROUGHT TOLERANT ORNAMENTAL AND CLIMBING PLANTS

Name	Specification	Planting
Sarcococca confusa	CG 2L	20%
Lavandula hidcote	CG 2L	20%
Skimmia 'Kew Green'	CG 2L	20%
Vincia minor 'Miss jekyll white'	CG 2L	20%
Hedera helix	CG 2L	20%
Rosmarinus officinalis prostratus	CG 2L	20%

Note: See Design Proposal of Landscape Design Report for details

04. DESIGN PROPOSAL

4.9 SOFT LANDSCAPING DETAILS

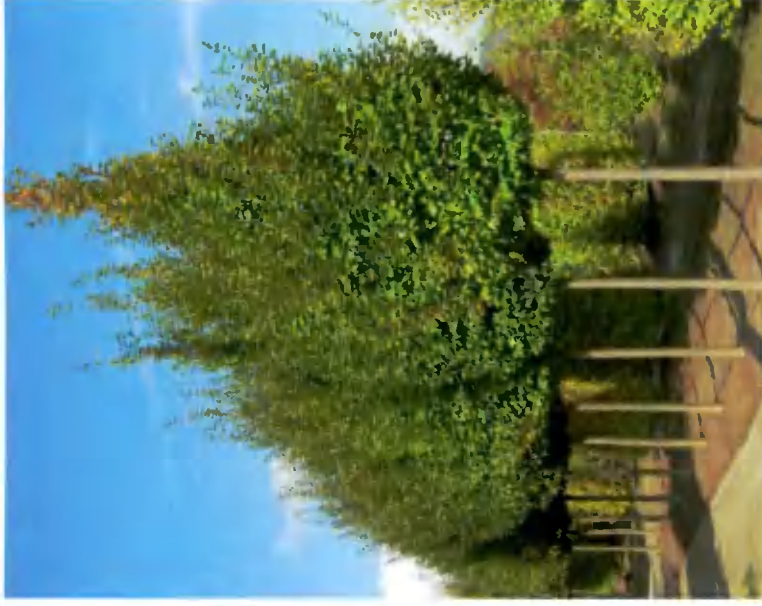
TREES



TREE MIX 1 – *Acacia dealbata*

Common name: Silver wattle/Mimosa
2m clear stem. 18/20cm girth.
To be underground guyed.

A small to medium growing evergreen tree. Typically growing up to 10m in urban situations. This Acacia makes a great splash of colour in late Winter. Bees will appreciate its nectar-rich flowers.



TREE MIX 1 – *Carpinus betulus*

Common name: Hornbeam
2m clear stem. 20/25cm girth.
To be double staked.

A superb specimen tree with its upright habit making it an ideal choice for an apartment scheme such as this.



TREE MIX 2 – *Betula utilis 'Jacquemontii'*

Common name: White Himalayan Birch
Multi-stem. 1.5m height.
To be underground guyed.

This is an ornamental variety of tree with a really eye-catching white bark especially visible during the winter months.



TREE MIX 2 – *Amelanchier lamarckii*

Common name: Snowy mespilus
Multi-stem. 1.5m height.
To be underground guyed.

This is a small compact tree suitable for urban spaces and recommended by Biodiversity Ireland as a pollinator species.

HEDGING



HEDGE 1

- PRUNUS LAUROCERASUS 'GENOLIA'
- HEIGHT - 1.2/1.8M
- 3 PER LINEAR METRE

Please refer to the planting plan and sections for further information regarding the proposed location of this planting.

04. DESIGN PROPOSAL

4.9 SOFT LANDSCAPING DETAILS

PLANT MIX 1 - ORNAMENTAL MIX

This mix is comprised of evergreen shrubs, grasses and perennials to ensure interest through each season. Over 80% of the plants within this mix are listed by Biodiversity Ireland as a recommended pollinator species. This plant mix has been proposed adjacent to the northern, southern, eastern and western boundaries of the apartment block, within the raised planters and within plant beds adjacent to communal and public seating areas. This plant mix will also function as an effective boundary and buffer treatment.

Please refer to the landscape planting plan for further information.

- | | |
|---------------------------------|----------------------------------|
| PERENNIALS: | SHRUBS & GRASSES: |
| SALVIA 'CARADONNA' | HYDRANGEA ARBORESENS 'ANNABELLE' |
| EUPHORBIA AMYGDALOIDES | ERICA CARNEA 'SPRINGWOOD WHITE' |
| FRANCOA SONCHIFOLIA | FATSIA JAPONICA |
| GERANIUM 'ROZANNE' | NANDINA DOMESTICA |
| GERANIUM SANGUINEUM 'ALBUM' | MAHONIA AQUIFOLIUM 'APOLLO' |
| HELLEBORUS X HYBRIDUS | SARCOCOCCA CONFUSA |
| LAMIUM MACULATUM 'PINK CHABLIS' | VIBURNUM TINUS |
| LIATRIS SPICATA | BUXUS SEMPERVIREN BALL 40CM |
| PERSICARIA BISTORTA | BUXUS SEMPERVIREN BALL 60CM |
| VERBENA BONARIENSIS | CAREX 'EVER ICE' |

PLANT MIX 2 - BALCONY MIX

This mix consists of small evergreen shrubs and climbers that will thrive in shaded and semi-shaded areas and within elevated planters. This mix is low maintenance and hardy and has been specified for the balcony and wall planters to provide year round colour and interest.

Please refer to the landscape planting plan for further information.

- PLANTING:**
- SARCOCOCCA CONFUSA
 - SKIMMIA 'KEW GREEN'
 - VINCA MINOR 'MISS JEKYLL WHITE'
 - HEDRA HELIX
 - ROSMARINUS OFFICINALIS PROSTRATUS
 - LAVANDULA HIDCOTE



Plant Mix 1 - Precedent image



Plant Mix 2 - Precedent image



Verbena 'Bonariensis'



Hydrangea 'Annabelle'



Salvia Nemeosa 'Caradonna'



Buxus Semperviren



PM2 - Vinca Minor



PM2 - Prostrate rosemary



PM2 - Skimmia 'Kew Green'



PM2 - Hedra helix

04. DESIGN PROPOSAL

4.9 SOFT LANDSCAPING DETAILS - BALCONY PLANTING



Balcony troughs have been included in the building design of this development. As part of our planting plan, we have specified a mix that will establish in these conditions. Some shade loving plants have been included in the mix and the exact schedule will be subject to the conditions of each individual trough. We as specifying plants at a rate of 6.25 p/sq.m and troughs will have a permanent irrigation feed.

PRIVATE OPEN BALCONY SPACE

BALCONY PLANT MIX

1M HIGH PLANTERS



SARCOCOCCA CONFUSA



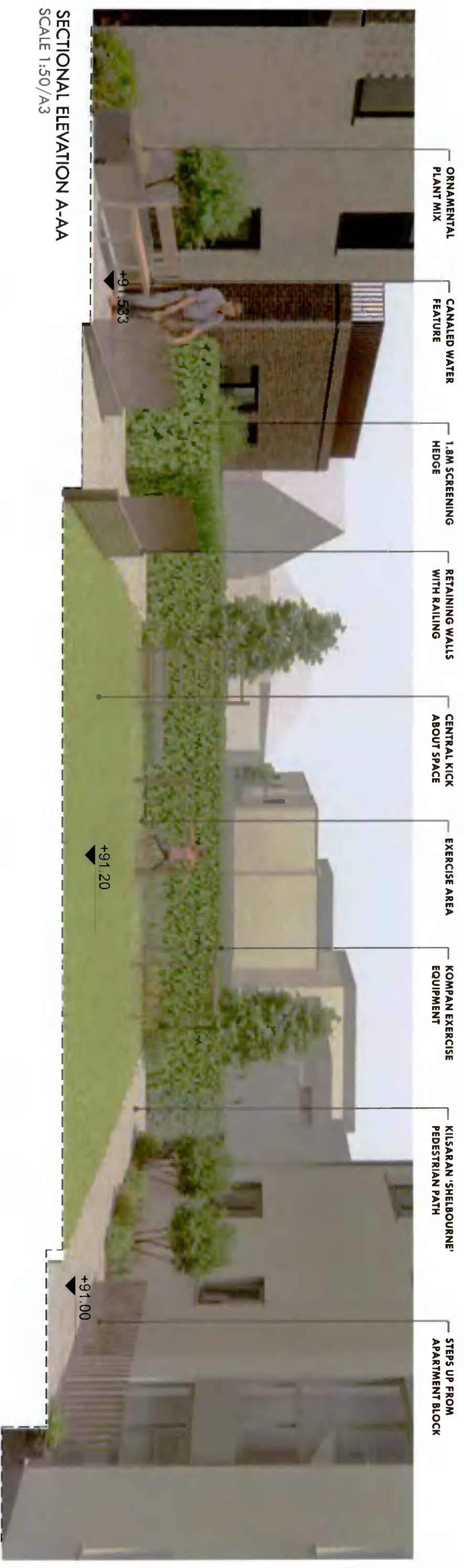
HEDRA HELIX



CLIMBING HYDRANGEA

04. DESIGN PROPOSAL

4.10 SITE SECTION ELEVATIONS

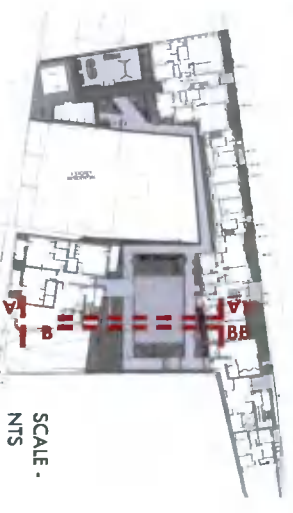


SECTIONAL ELEVATION A-AA
SCALE 1:50/A3



SECTIONAL ELEVATION B-BB
SCALE 1:50/A3

SECTION INDICATION PLAN



SCALE - 1:500

04. DESIGN PROPOSAL

4.10 SITE SECTIONS - SCREENING

TERRACE SCREENING



COMMUNAL OPEN SPACE -
PEDESTRIAN PATH

ORNAMENTAL PLANT MIX
DEFUSING VIEWS

COMMUNAL OPEN SPACE -
PEDESTRIAN PATH

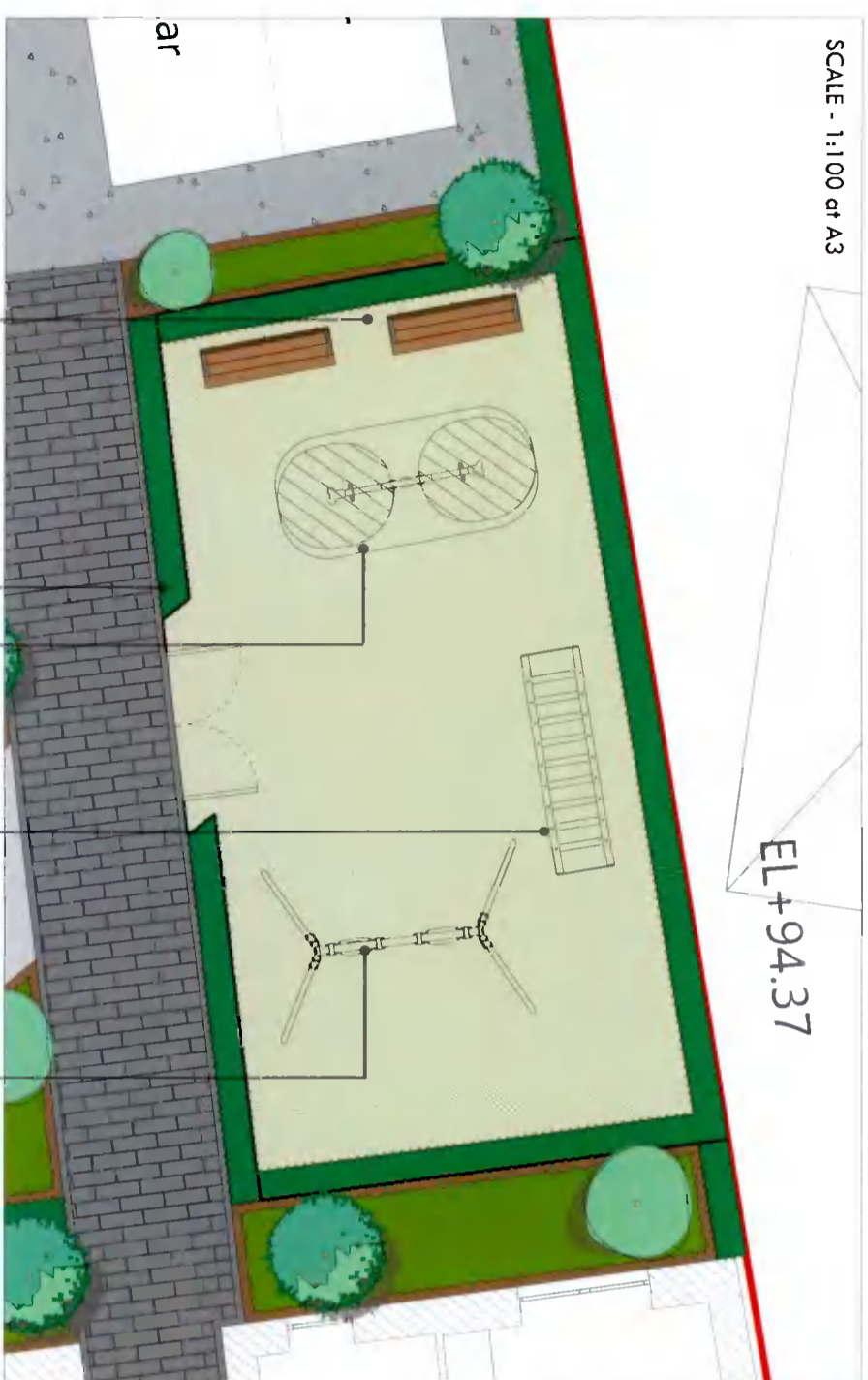
ORNAMENTAL TREE
DEFUSING VIEWS
INTO GROUND FLOOR APARTMENTS



04. DESIGN PROPOSAL

4.1.1 PLAY STRATEGY - CHILDREN'S PLAY - 81 sq.m

SCALE - 1:100 at A3



SAFETY SURFACE -
WOOD FIBRE

1.2M HEDGE
WITH BOWTOP
FENCE

SEESAW WITH
SPRINGS

THE SWAY ALLEY

SWING H:2.0M, STD.
SEATS



SCALE - 1:1000 at A3
SECTION INDICATION PLAN

THE SWAY ALLEY

KOMPAN - KPL1855-0001

The Sway Alley hugely attracts children of all ages to try out their balancing skills. It will be a playground success, again and again, thanks to the responsive horizontal logs: For every step the child takes, it trains important physical skills: use of the sense of balance, tensioning muscles in the feet, legs, core and arms to adjust equilibrium.

SEESAW WITH SPRINGS

KOMPAN - KPL111-0001

The Seesaw is a playground classic. It still attracts players again and again, as it has done for generations. The vintage play item is still with us for a reason: the tickling in the stomach when going up high, then going down fast is eternally appealing. The Seesaw develops the sense of space and rhythm and leg muscles of children.

SWING H:2.0M, STD. SEATS

KOMPAN - KSW90010-0902

Of all the play activities, swinging is a favorite: children love it, as it can be done individually and together. This swing set supports the play joy of doing the same thing at the same time, featuring two similar swing seats. The seats are shaped with a slight curve in the middle, to facilitate the secure seat position of a wide age span. A great place to play, for all ages, for hours and days. Swinging apart from being great fun, trains the children's ABC: agility, balance and coordination as well as their spatial awareness.



04. DESIGN PROPOSAL

4.11 PLAY STRATEGY - EXERCISE - 22 sq.m



GRASSCRETE SURFACE

MULTI NET

PARALLEL BARS

OVERHEAD LADDER

PARALLEL BARS

KOMPAN - FSW201

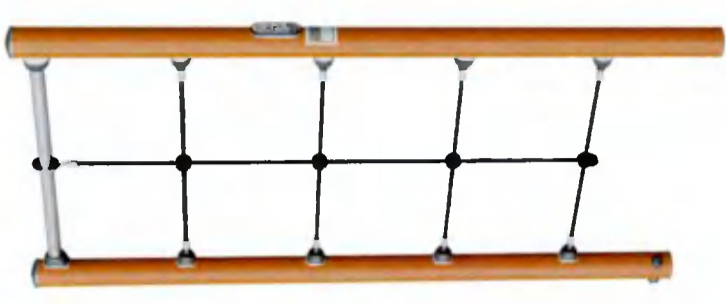
Street workout is a physical activity that symbolises the freedom of movement and encourages socialising. It is a combination of athletics, calisthenics and other sports, and mostly performed in the public space. A Parallel Bar can be found on every street workout area to train the upper body and core stability. The Parallel Bar fits really well in an Obstacle Course.



MULTI NET

KOMPAN - FSW207

A climbing structure with an overhead pull up bar that offers support for varying the difficulty levels of own bodyweight exercises. The Multi Net is perfect as a training tool preparing for climbing movements in obstacle and survival runs. The Multi Net has a clear instruction sign showing the basic exercise and a QR code.



OVERHEAD LADDER

KOMPAN - FSW205

The overhead ladder, also known as the monkey bar, may be the most famous of all obstacle course elements. The goal is to get to the other side without using your feet. This overhead ladder is wide and high to ensure anyone can hang and move freely. To make sure that everyone can reach the overhead ladder there are 4 stepping pods at different heights. The overhead ladder has a clear instruction sign showing the basic exercise and a QR code. By clicking on the QR code users can connect to the KOMPAN fitness App, where they will find multiple exercises and workouts at every level.

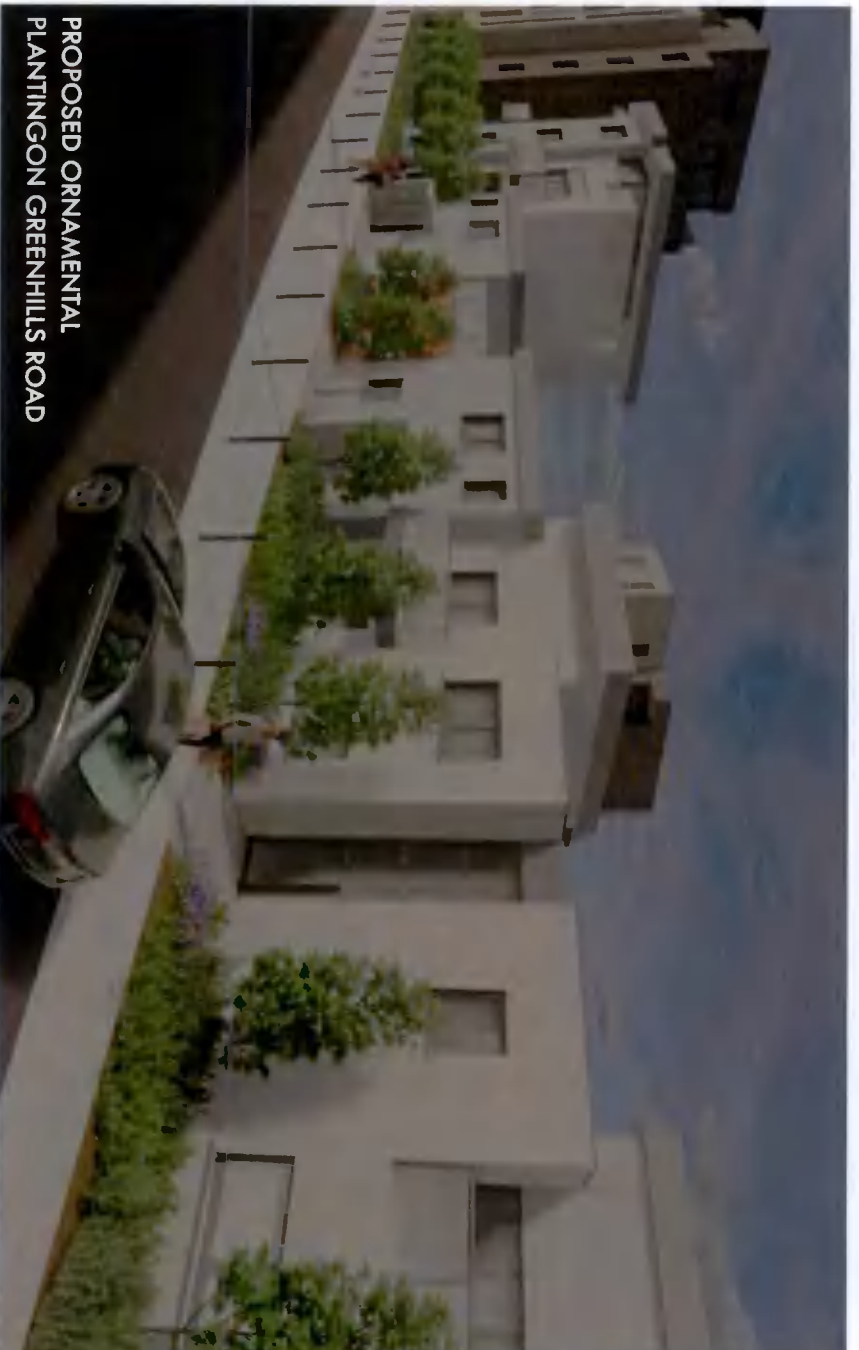
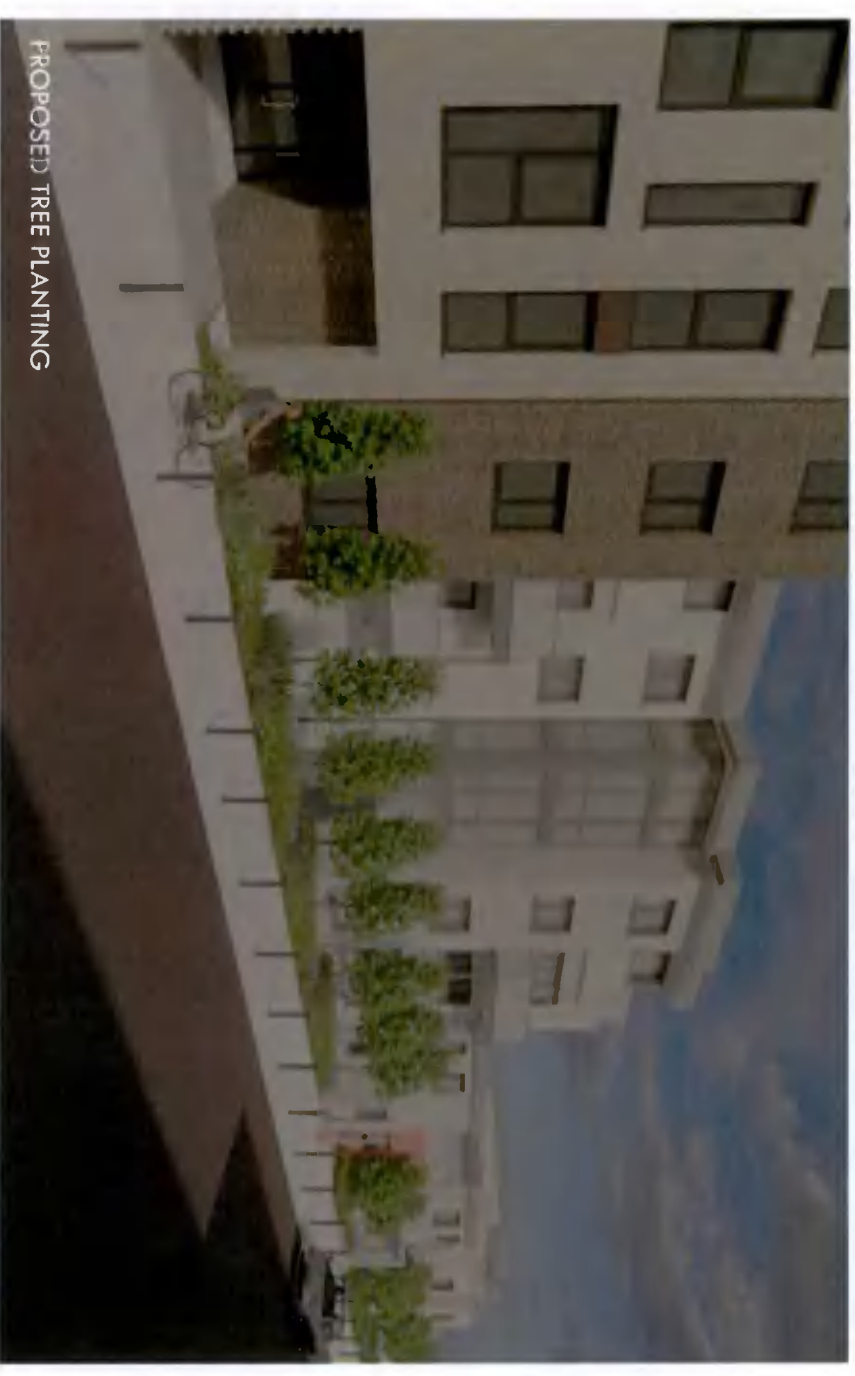
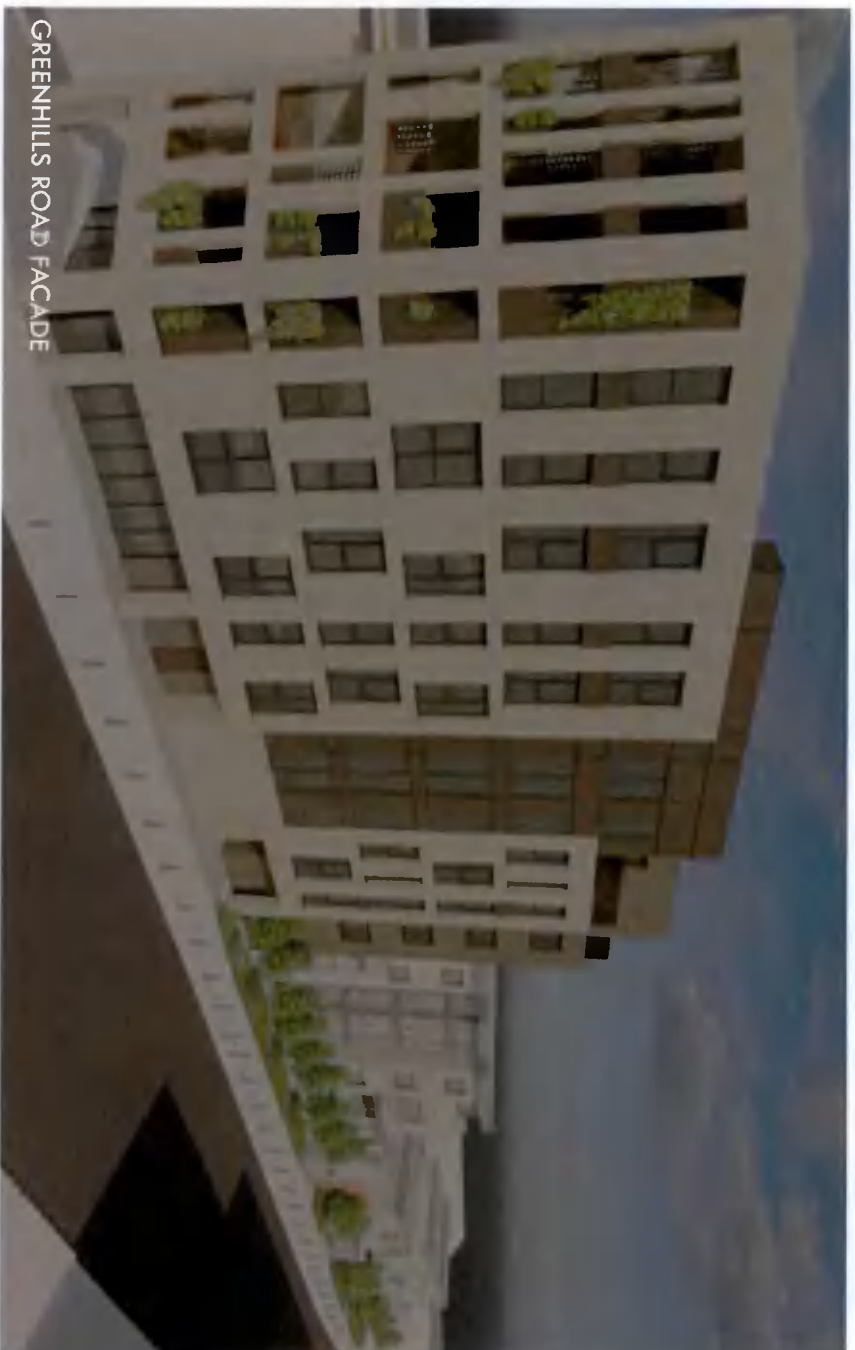


SCALE - 1:1,000 at A3

SECTION INDICATION PLAN

04. DESIGN PROPOSAL

4.13 IMAGERY



04. DESIGN PROPOSAL
4.13 IMAGERY



05. APPENDICES

5.1 LANDSCAPE INFORMATION BLOCKS

SAFETY SURFACE - WOOD FIBRE



Engineered Wood Chip

MATERIAL INFORMATION

- 300mm depth Engineered Woodchip safety surface to BS EN 1177
- Randomly sized and not exceeding 50mm in length
- No more than 15% fines to aid in compaction. Free of toxic material and other organic material
- Laid on 100-150mm pea gravel for drainage. Pea gravel laid over permeable weed barrier membrane

GRASSCRETE



Grasscrete Reinforced Grass

MATERIAL INFORMATION

- To provide structure for fire access route and surface parking.
- Self-draining to sub-layers.
- Safe load bearing capabilities via reinforcement.
- No reliance on grass cover for structural integrity.
- To Engineers specifications.

BOW TOP FENCING



Fencing

Description

Bow Top Fencing - enhances the look and feel of open spaces and children's play areas. There are no rough edges, dangerous gaps or holes that could cause injury to the public ensuring a safe and protective boundary that looks great.

- 1.2m height
- Galvanized finish
- Vandal proof connections
- Tubular construction for extra strength

05. APPENDICES

5.1 LANDSCAPE INFORMATION BLOCKS

TREE ANCHORING



Tree Staking Methods

Double staking method

Double staked with cross bar. Tree secured to cross bar with rubber ties.

Underground guying method

Platipus Rootball Fixing System or similar and approved.

To be installed as per manufacturers specifications.

Anchors are placed in the base of the tree pit in a triangle shape to secure the wires to

Tree guying straps will not cut the root ball.

Guy anchors are available in both composite and metal options.

SHEFFIELD BICYCLE STAND



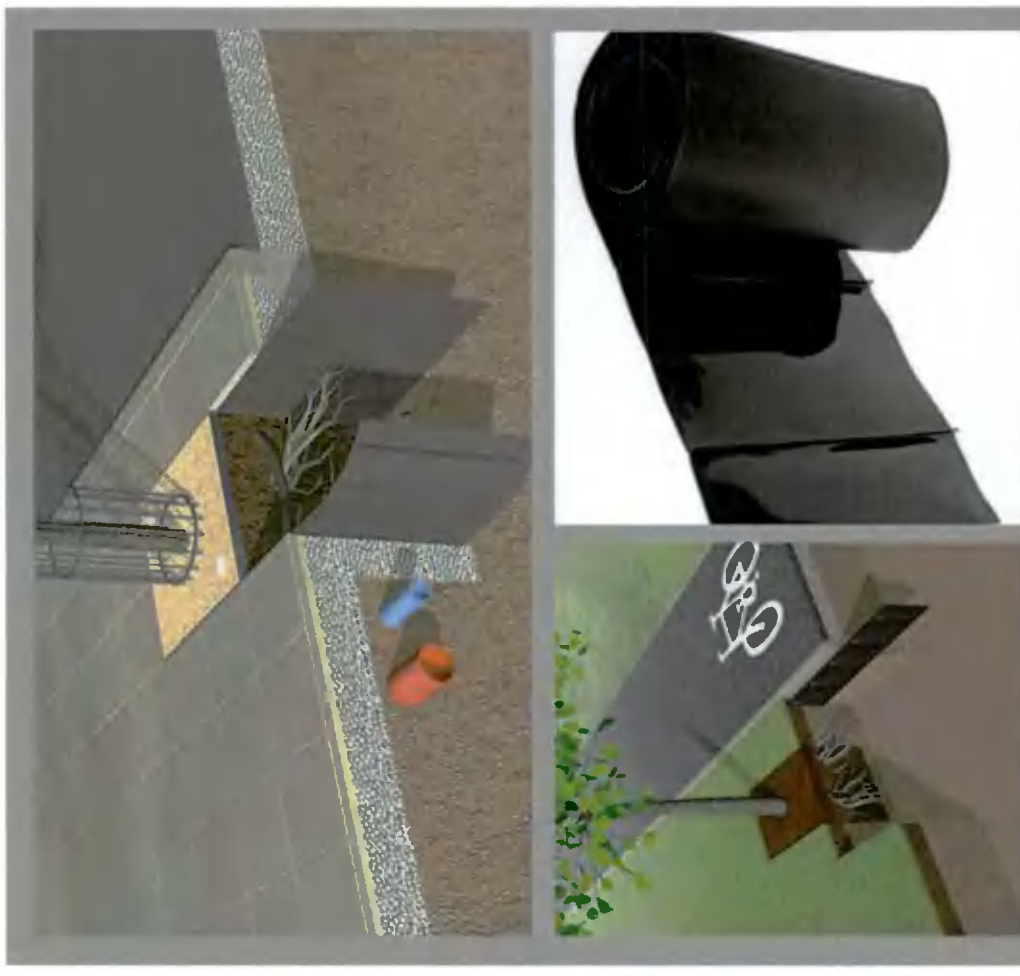
Sheffield Cycle Stand

Description

Sheffield cycle stands and racks are made of hot dipped galvanised steel to BS EN ISO 1461 as standard, ensuring durability and longevity of the product whilst also providing an excellent base for polyester powder coating if required.

Sheffield cycle stands can be surface mounted providing the existing surface is of good quality, sub surface fixed into the ground for extra security or in toast rack formation.

ROOT PROTECTION



Root Barrier Protection

Description

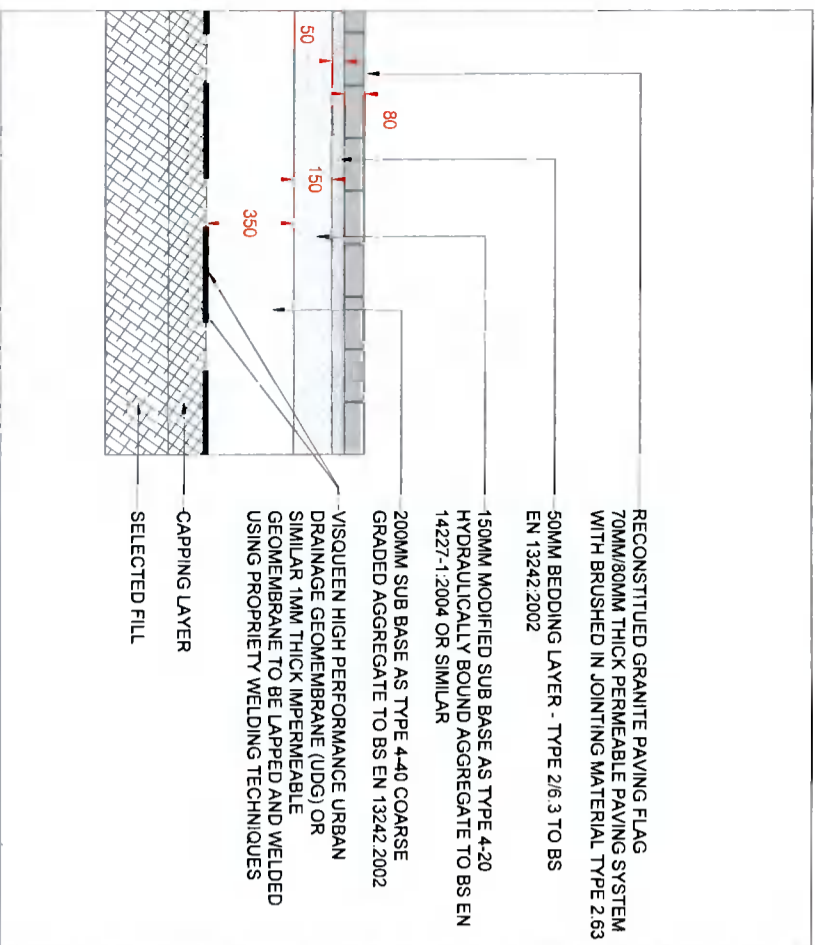
ReRoot 600 or similar and approved.

Ribbed root barriers designed for the protection of paved surfaces, shallow service ducts and utilities. This versatile root management system can be used to surround individual or groups of trees because the ribs are proven to divert lateral root growth downwards.

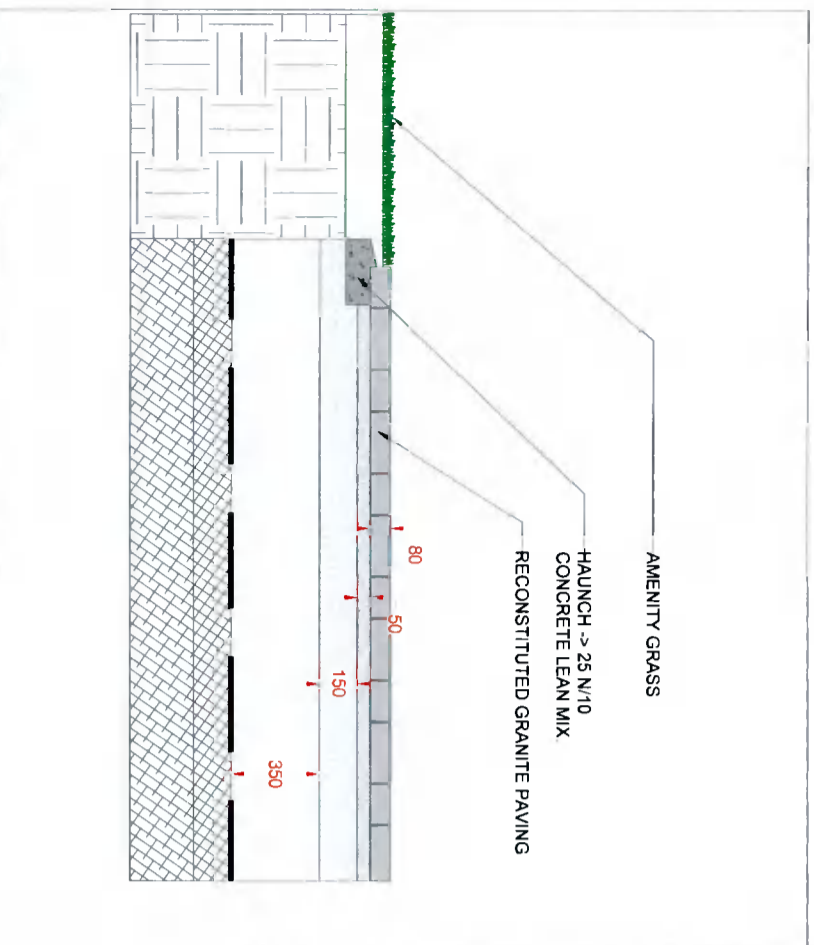
Available in roll form. Depth 600mm.

05. APPENDICES

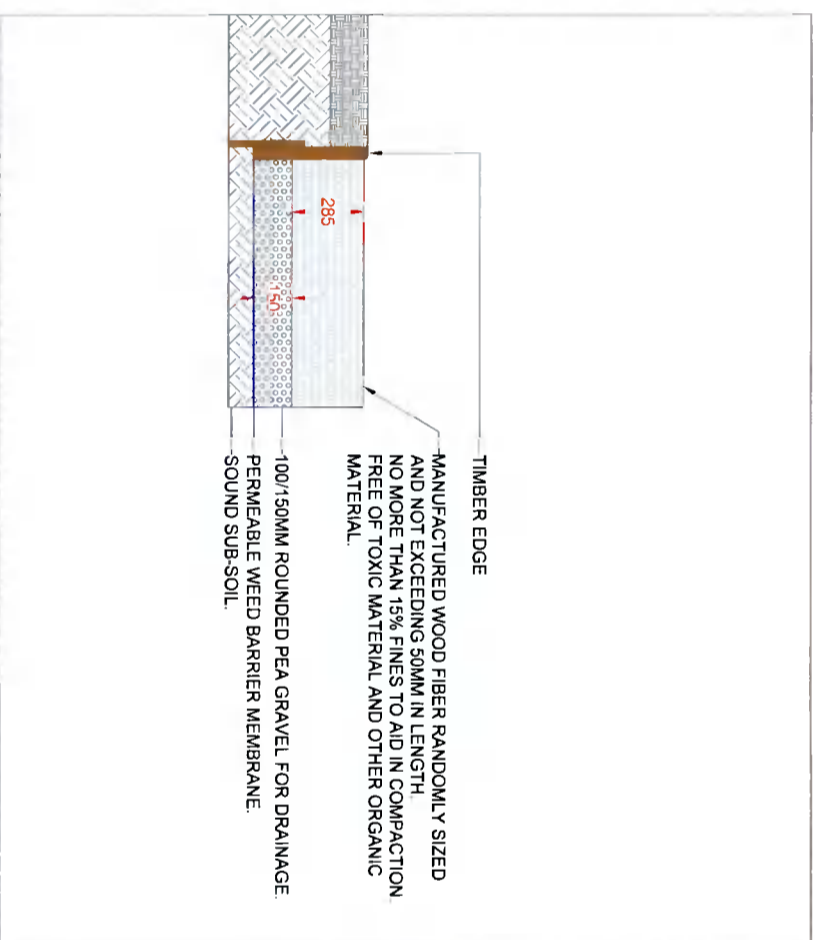
5.2 HARD LANDSCAPE DETAILS



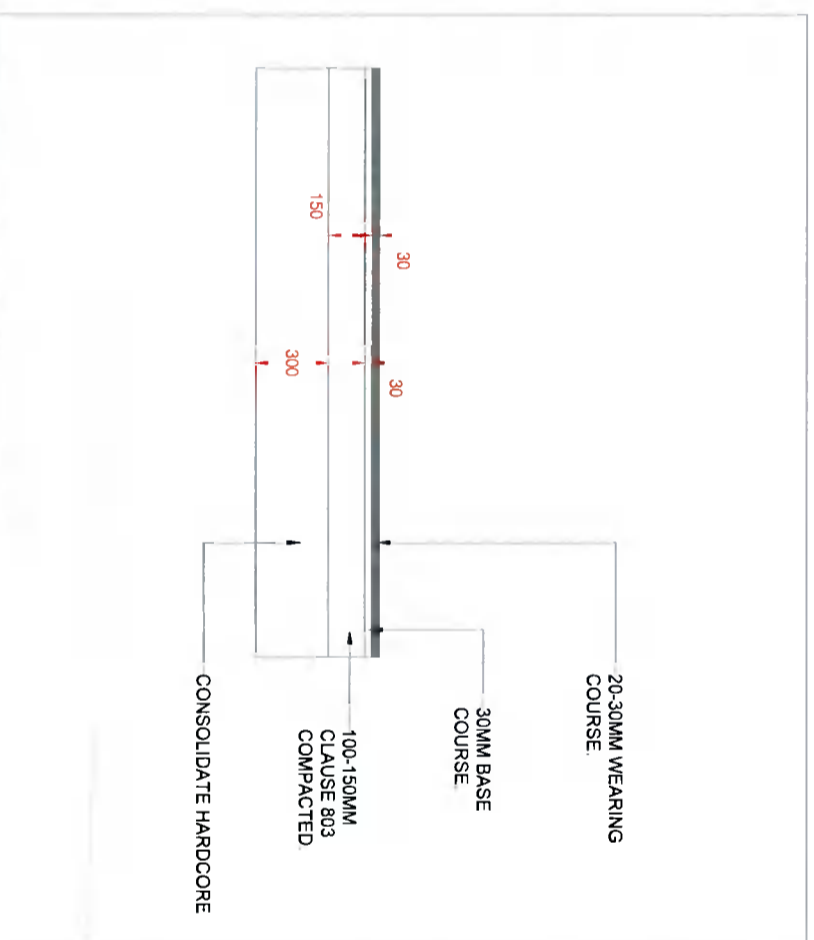
DETAIL D01 - PERMEABLE PAVING DETAIL
SCALE 1:30@A3



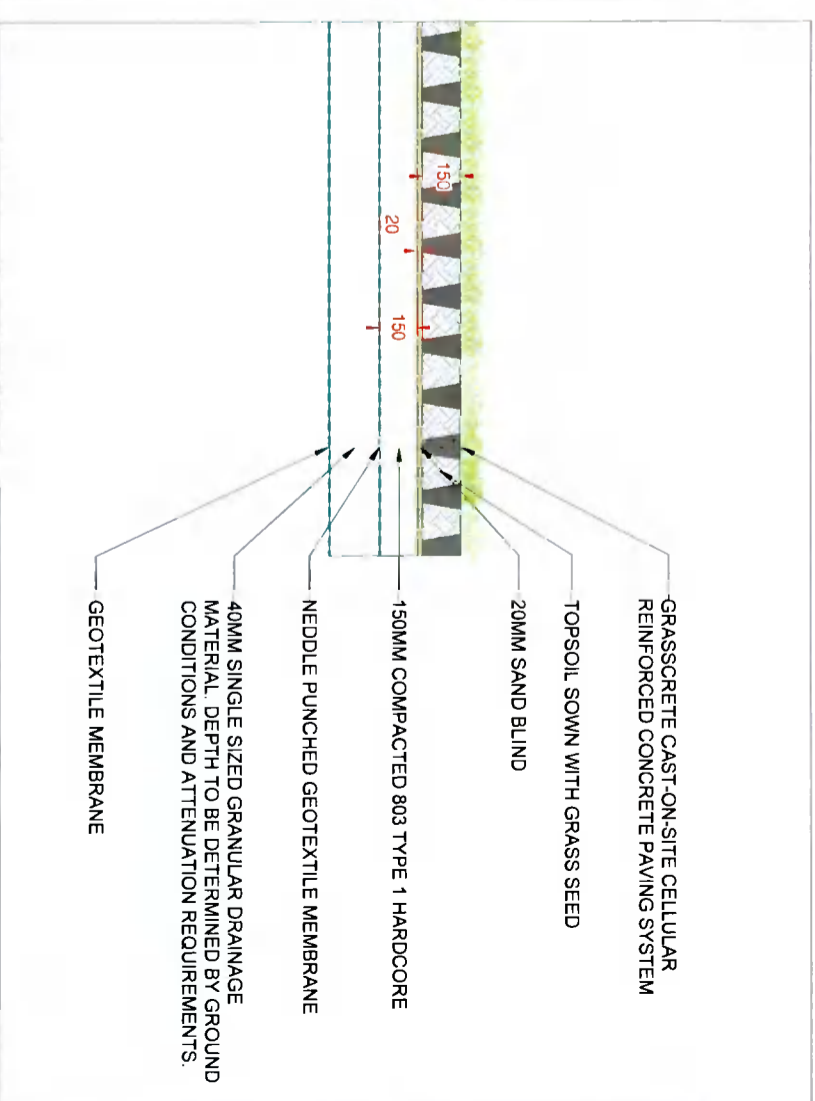
DETAIL D04 - FLAG PAVING TO GRASS BORDER DETAIL
SCALE 1:30@A3



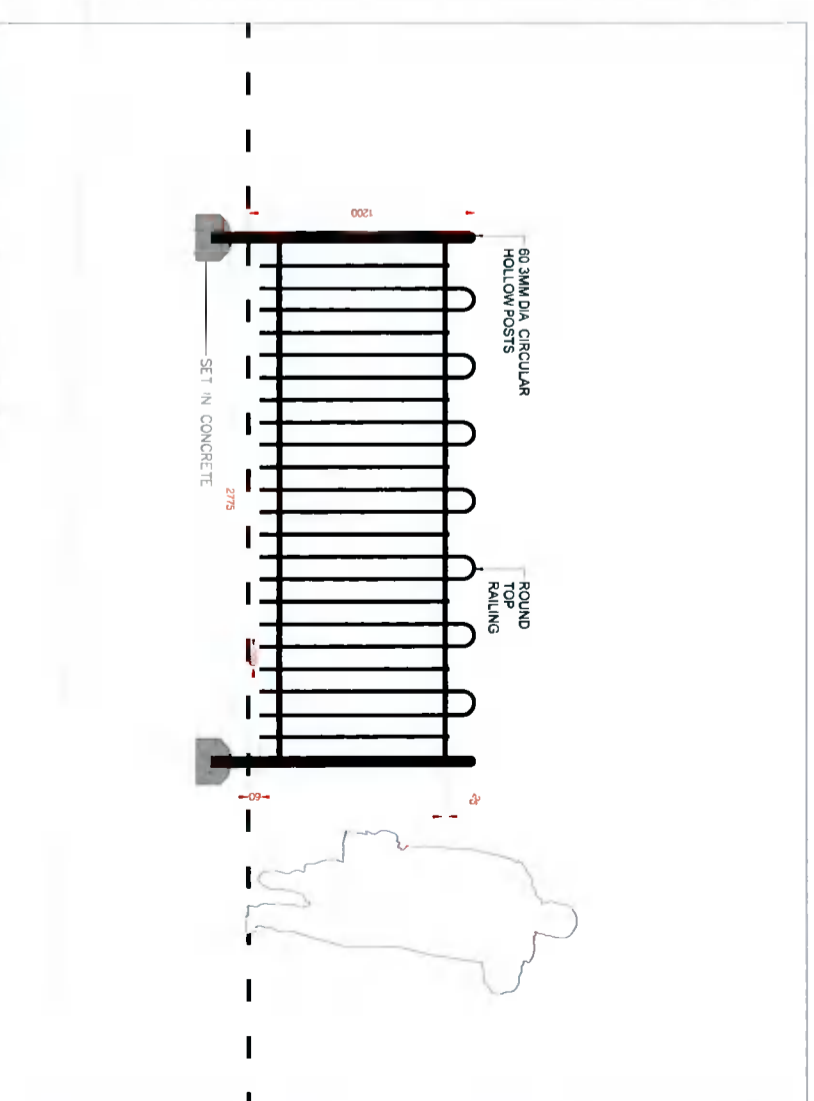
DETAIL D02 - ENGINEERED WOOD CHIP SAFETY SURFACE DETAIL
SCALE 1:30@A3



DETAIL D05 - TYPICAL TARMAC SURFACE DETAIL
SCALE 1:30@A3



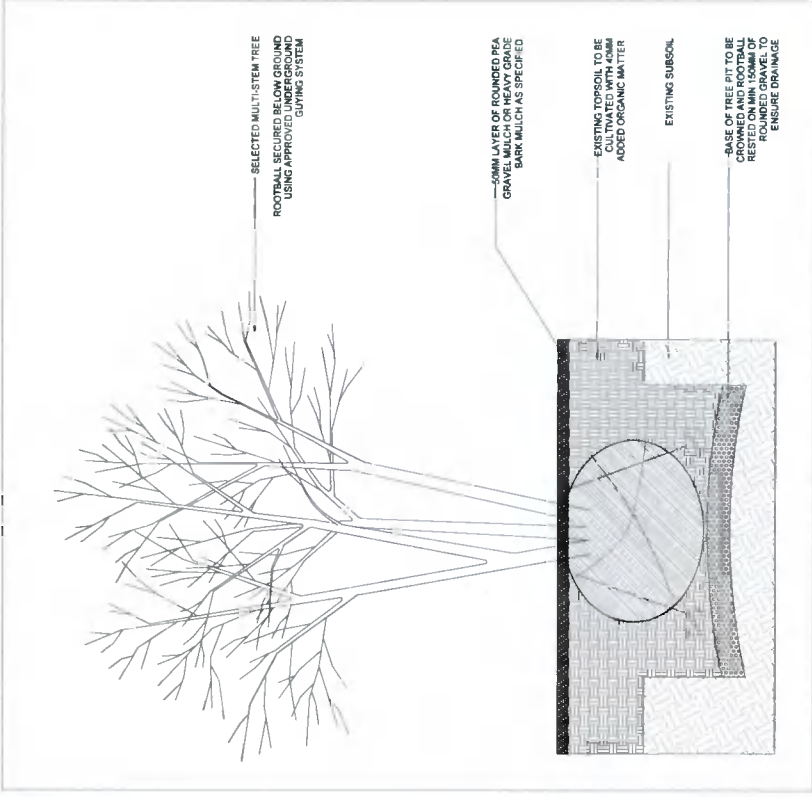
DETAIL D03 - GRASSCRETE SURFACE DETAIL
SCALE 1:30@A3



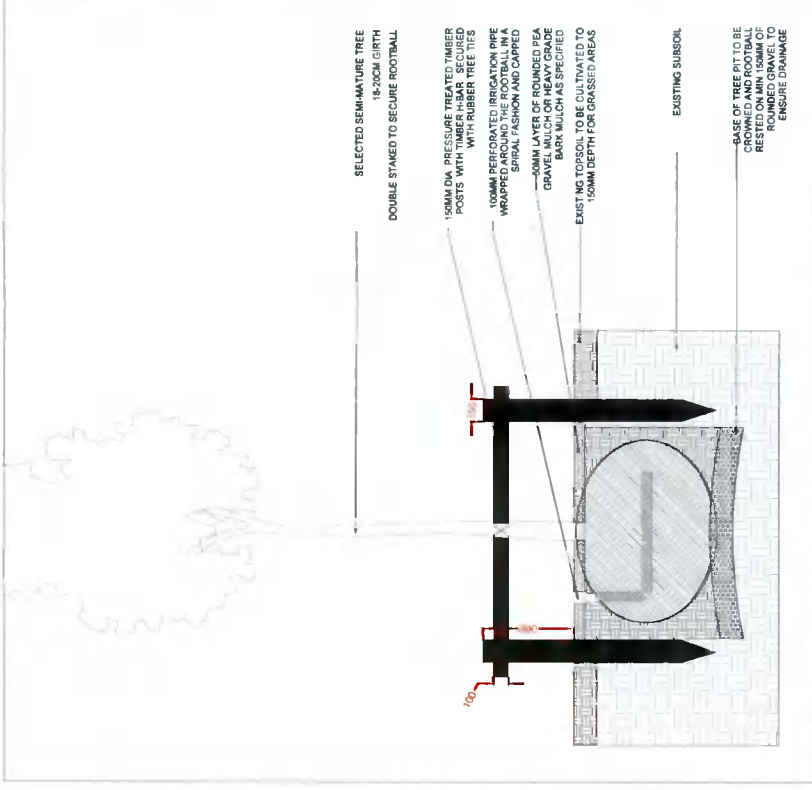
DETAIL D06 - BOW TOP RAILING DETAIL
SCALE 1:30@A3

05. APPENDICES

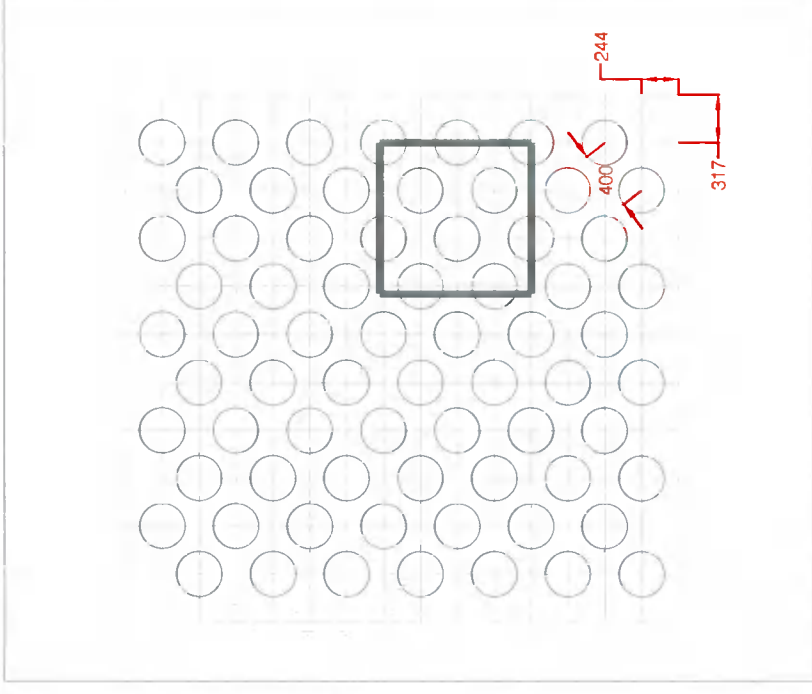
5.3 SOFT LANDSCAPE DETAILS



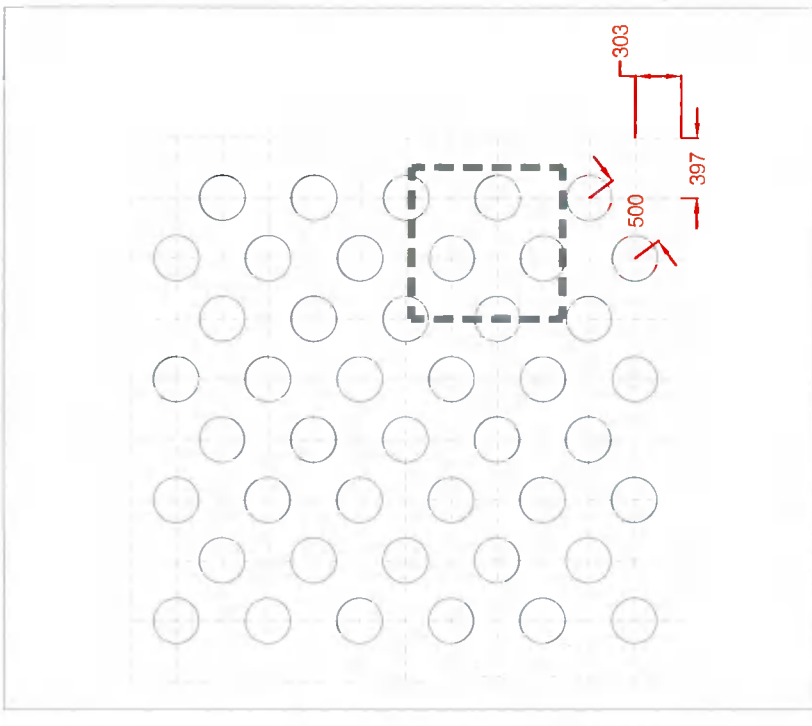
DETAIL D01 - TYPICAL UNDERGROUND GUYING DETAIL
SCALE 1:50@A3



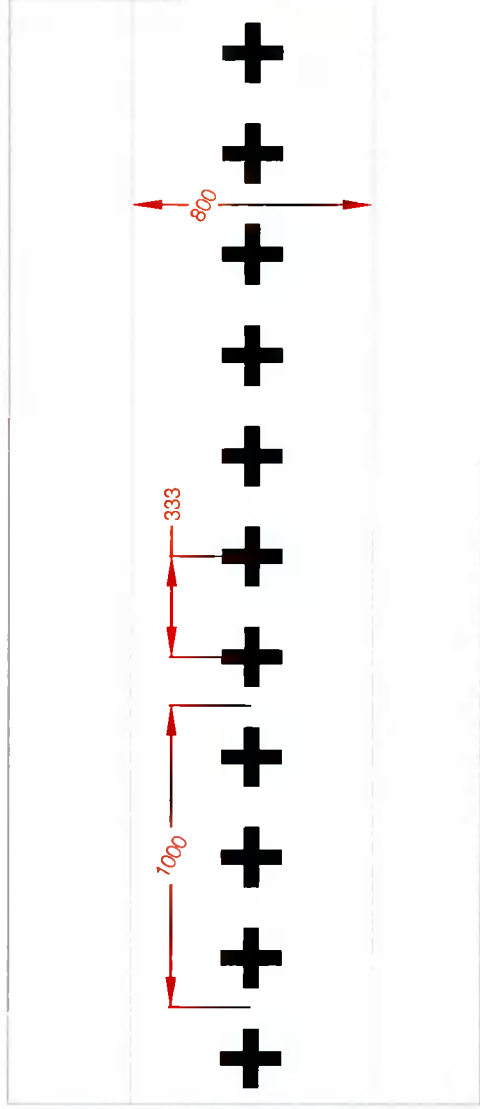
DETAIL D02 - TYPICAL DOUBLE STAKING DETAIL
SCALE 1:50@A3



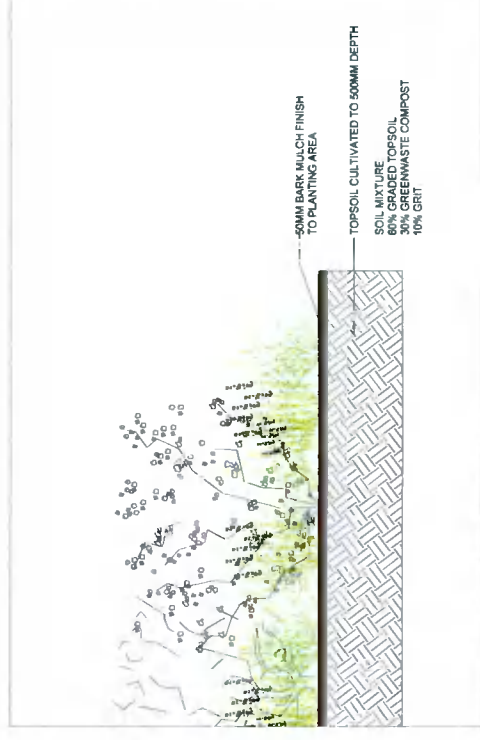
DETAIL D03 - 400 C/C PLANT SPACING
SCALE 1:50@A3



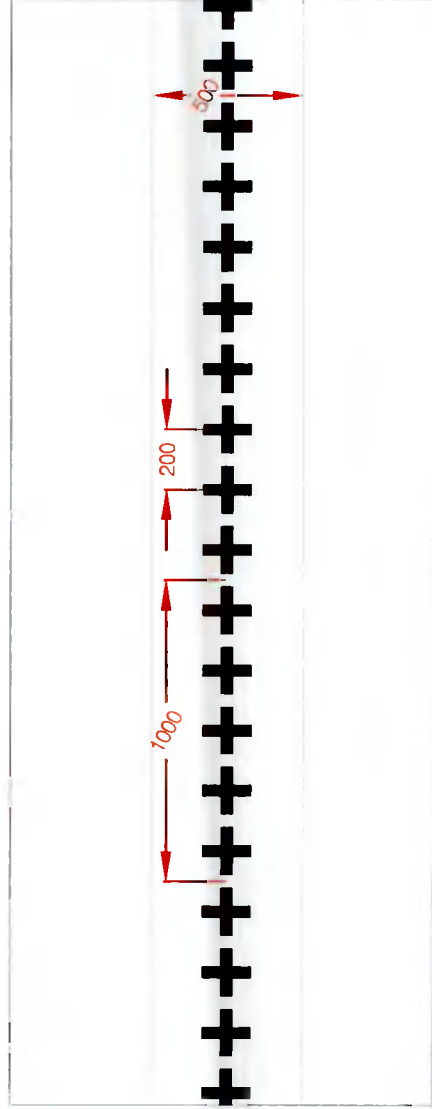
DETAIL D04 - 500 C/C PLANT SPACING
SCALE 1:50@A3



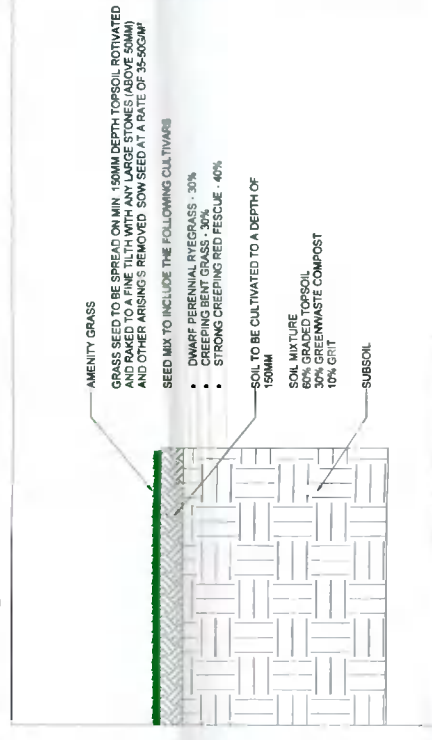
DETAIL D05 - HEDGE PLANTING DETAIL (3no. per lin.m)
SCALE 1:25@A3



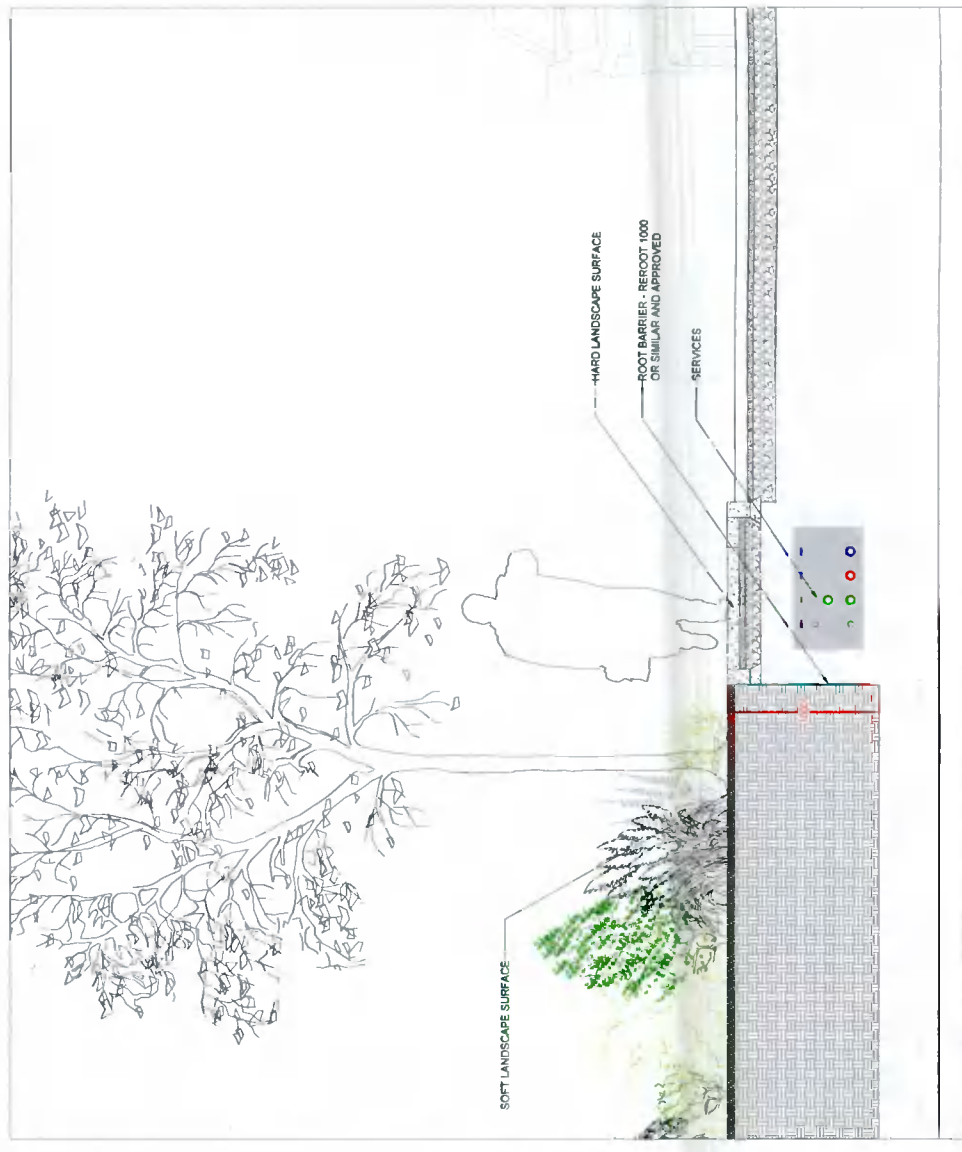
DETAIL D07 - PLANT BED DETAIL
SCALE 1:50@A3



DETAIL D06 - HEDGE PLANTING DETAIL (5no. per lin.m)
SCALE 1:25@A3



DETAIL D09 - AMENITY GRASS DETAIL
SCALE 1:50@A3



DETAIL D09 - TYPICAL TREE ROOT BARRIER DETAIL
SCALE 1:50@A3

05. APPENDICES

5.4 A1 DRAWINGS

SEE ATTACHED THE FOLLOWING A1 DOCUMENTS;

21-361-DD-01 - LANDSCAPE DESIGN PLAN

21-361-DD-02 - PLANTING PLAN

